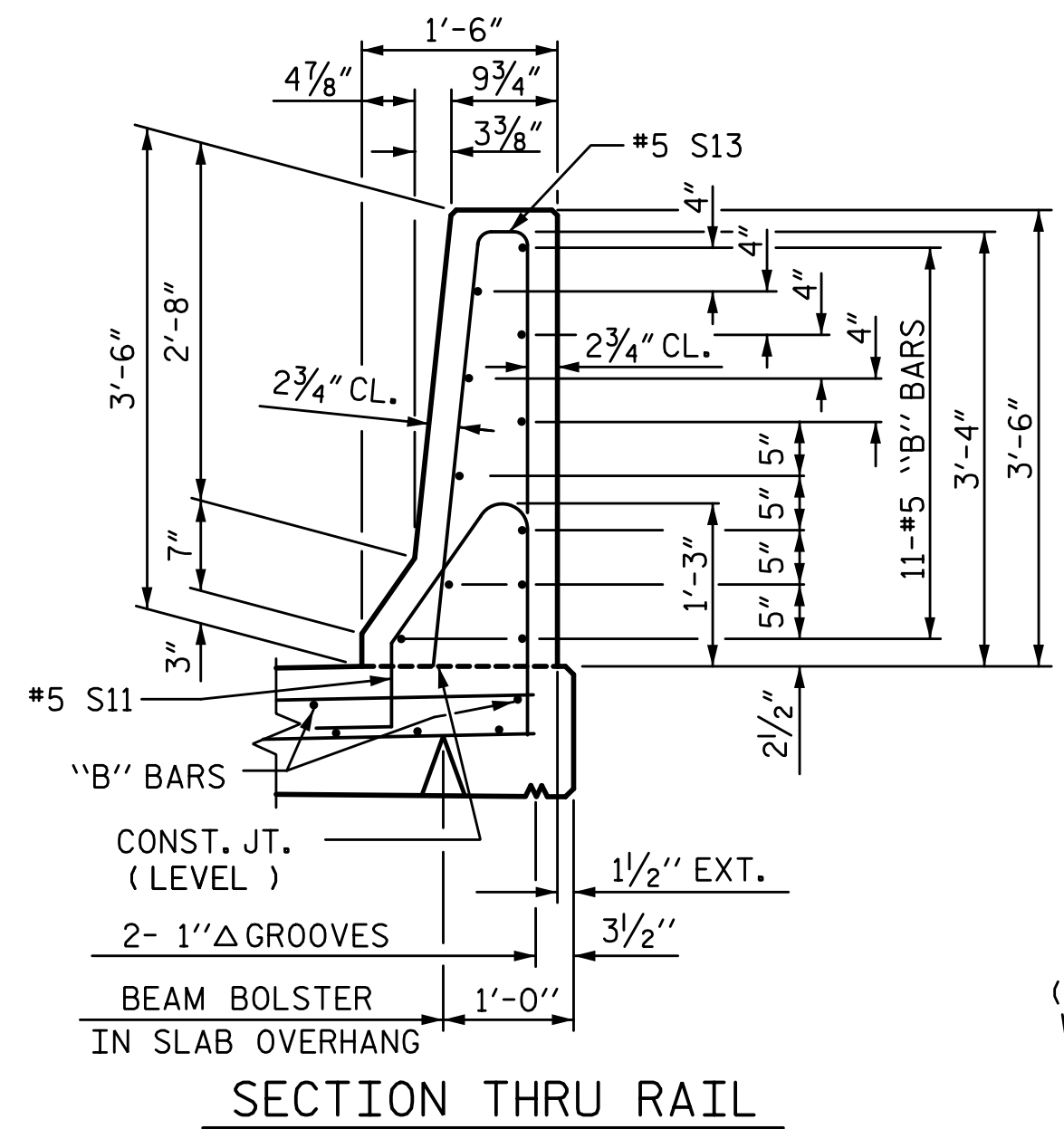
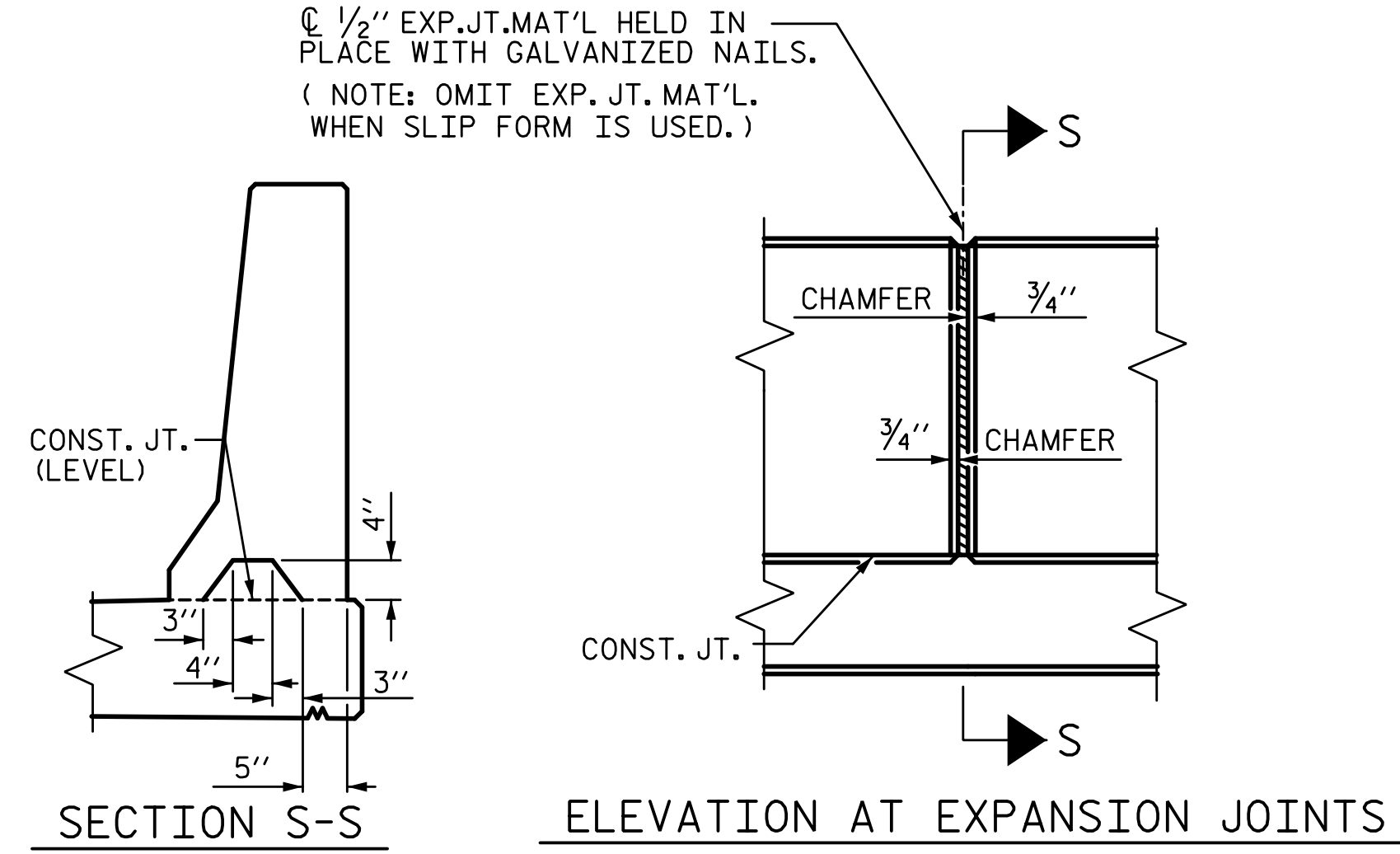


9/14/2022 8:06:00 AM P:\Raleigh\Projects\2018\Division 3 (SEA)\B-5652 (Onslow 33 US17 NBL over Wolf Swamp)\Structures\Drawings\Final\401-B5652-SMU_BR_660033.dgn



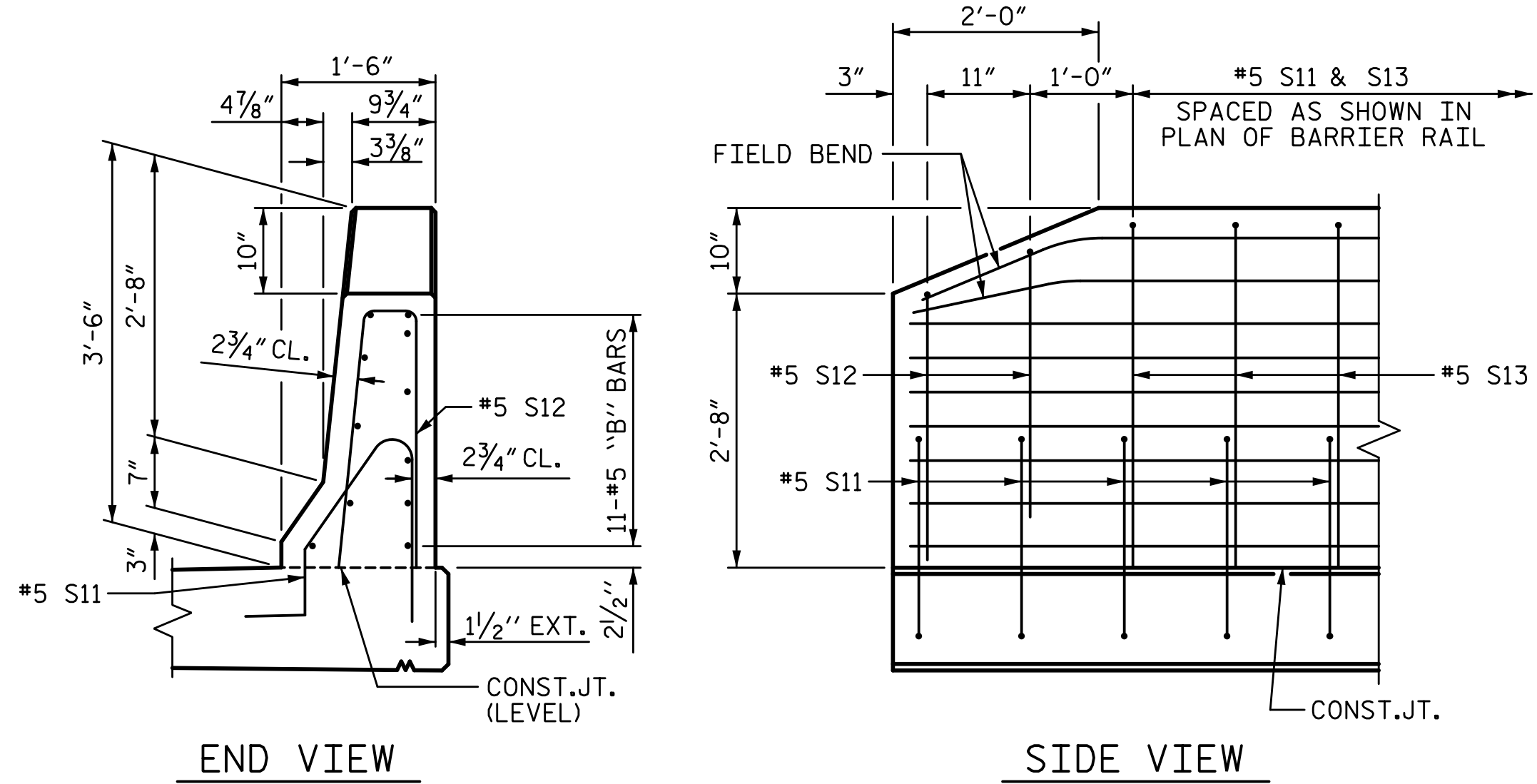
SECTION THRU RAIL



SECTION S-S

ELEVATION AT EXPANSION JOINTS

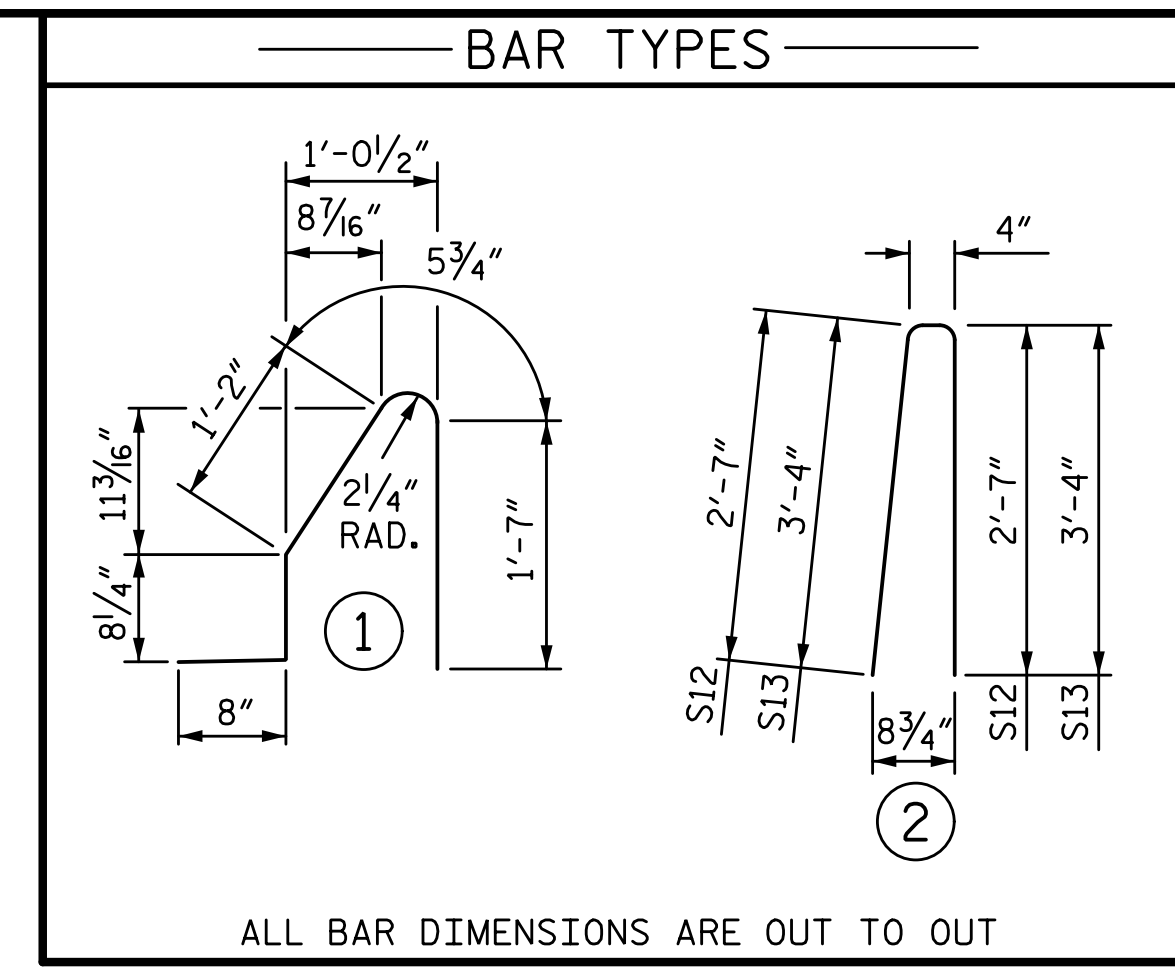
BARRIER RAIL DETAILS



END VIEW

SIDE VIEW

END OF RAIL DETAILS



ALL BAR DIMENSIONS ARE OUT TO OUT

BILL OF MATERIAL					
CONCRETE BARRIER RAIL					
BAR NO.	NO.	SIZE	TYPE	LENGTH	WEIGHT
*B11	88	#5	STR	24'-2"	2218
*S11	200	#5	1	4'-7"	956
*S12	8	#5	2	5'-6"	46
*S13	192	#5	2	7'-0"	1402
EPOXY COATED REINFORCING STEEL					4622 LB
CLASS AA CONCRETE					26.7 CY
CONCRETE BARRIER RAIL					196.67

* INDICATES EPOXY COATED REINFORCING STEEL

NOTES:

THE BARRIER RAIL IN THE SPAN SHALL NOT BE CAST UNTIL ALL SLAB CONCRETE IN THAT SPAN HAS BEEN CAST AND HAS REACHED A MINIMUM COMPRESSIVE STRENGTH OF 3,000 PSI.

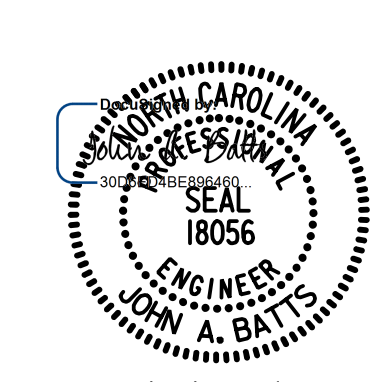
ALL REINFORCING STEEL IN BARRIER RAILS SHALL BE EPOXY COATED.

GROOVED CONTRACTION JOINTS, 1/2" IN DEPTH, SHALL BE TOOLED IN ALL EXPOSED FACES OF THE BARRIER RAIL AND IN ACCORDANCE WITH ARTICLE 825-10(B) OF THE STANDARD SPECIFICATIONS. THE CONTRACTION JOINT SHALL BE LOCATED AT EACH THIRD POINT BETWEEN BARRIER RAIL EXPANSION JOINTS. ONLY ONE CONTRACTION JOINT IS REQUIRED AT MIDPOINT OF BARRIER RAIL SEGMENTS LESS THAN 20 FEET IN LENGTH AND NO CONTRACTION JOINTS ARE REQUIRED FOR THOSE SEGMENTS LESS THAN 10 FEET IN LENGTH.

#5 S11 AND #5 S13 BARS MAY BE SHIFTED AS NECESSARY TO MAINTAIN 2" MINIMUM CLEARANCE TO THE 1/2" EXPANSION JOINT MATERIAL.

PROJECT NO. B-5652
ONLOW COUNTY
 STATION: 20+64.00 -L-RT-

SHEET 2 OF 2



STATE OF NORTH CAROLINA
 DEPARTMENT OF TRANSPORTATION
 RALEIGH
 SUPERSTRUCTURE
CONCRETE BARRIER RAIL

DRAWN BY: T. BANKOVICH	DATE: 5-22
CHECKED BY: J.A. BATTS	DATE: 5-22
DESIGN ENGINEER OF RECORD: J.A. BATTS	DATE: 5-22

REVISIONS				SHEET NO.	
NO.	BY:	DATE:	NO.	BY:	DATE:
1			3		
2			4		

DOCUMENT NOT CONSIDERED FINAL UNLESS ALL SIGNATURES COMPLETED