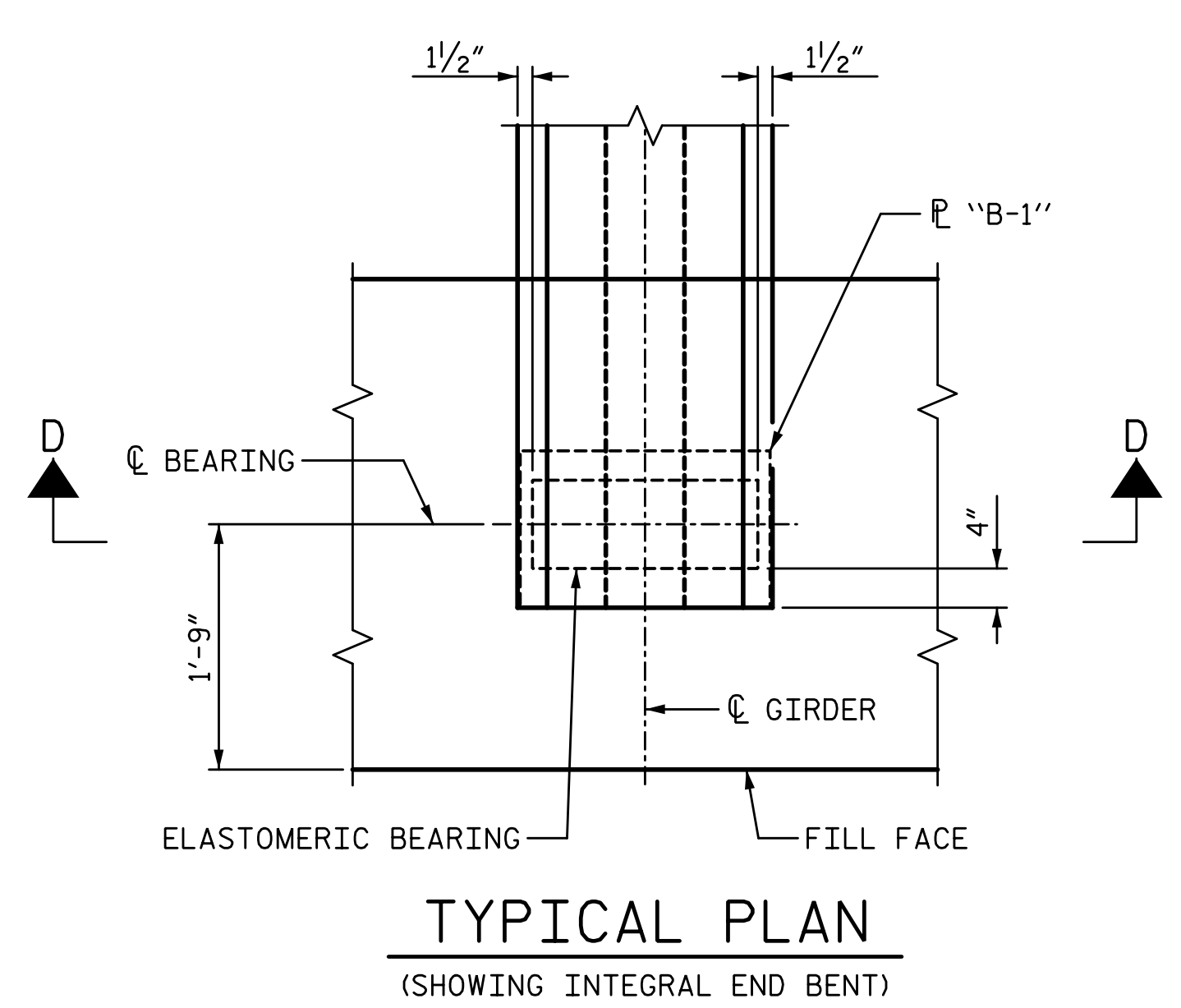
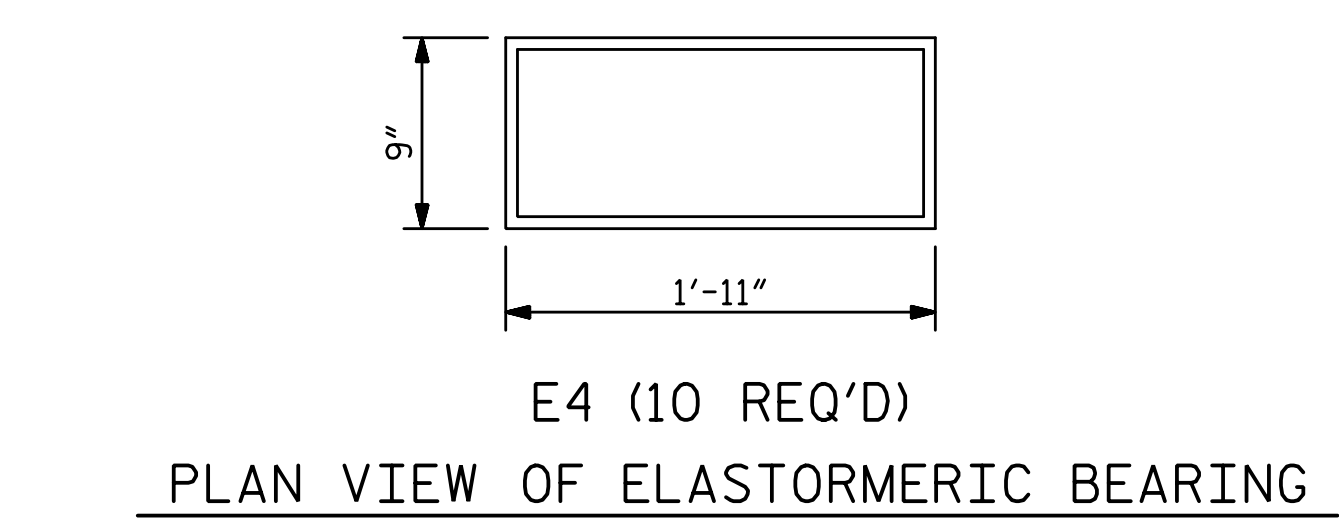
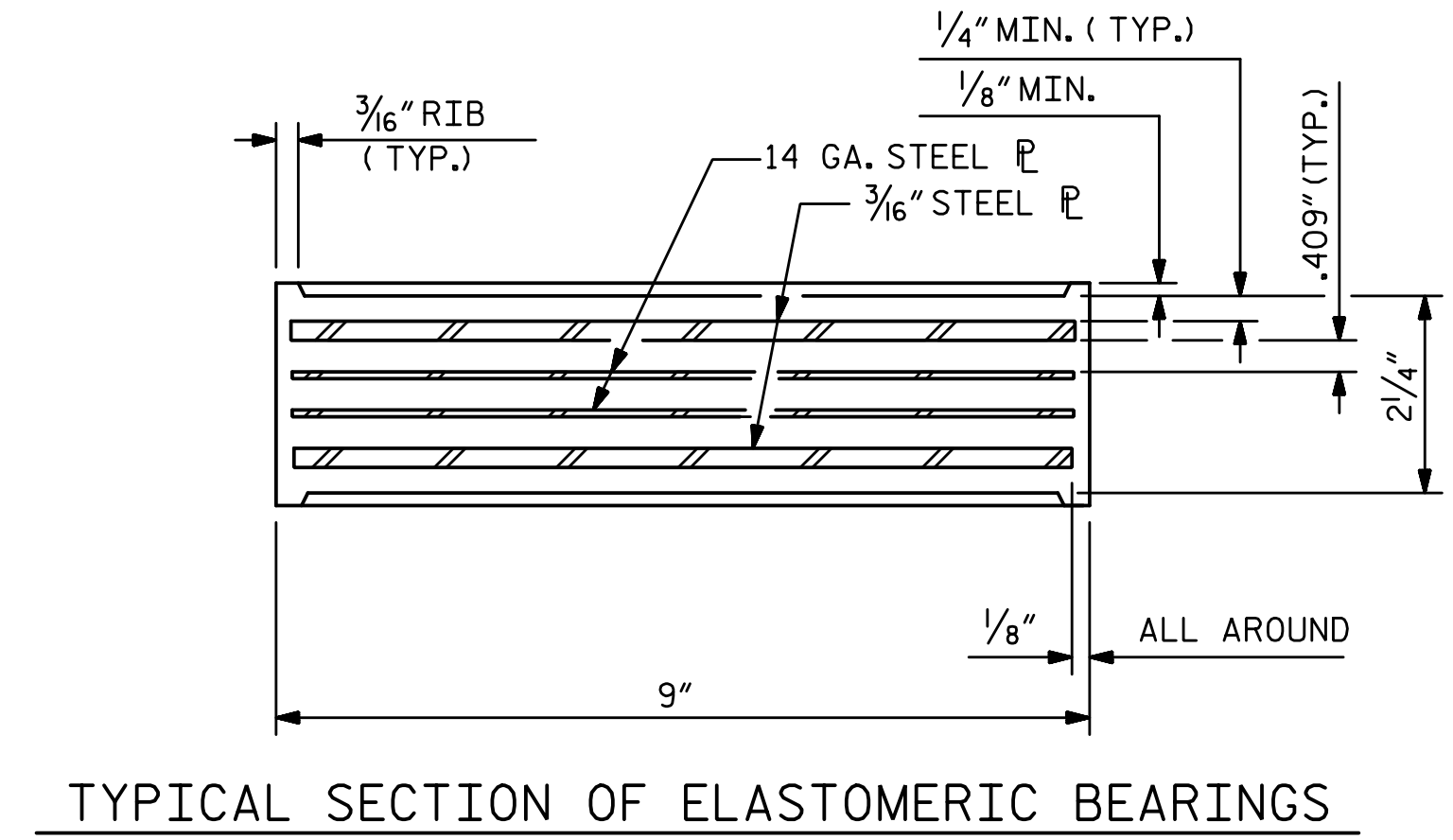
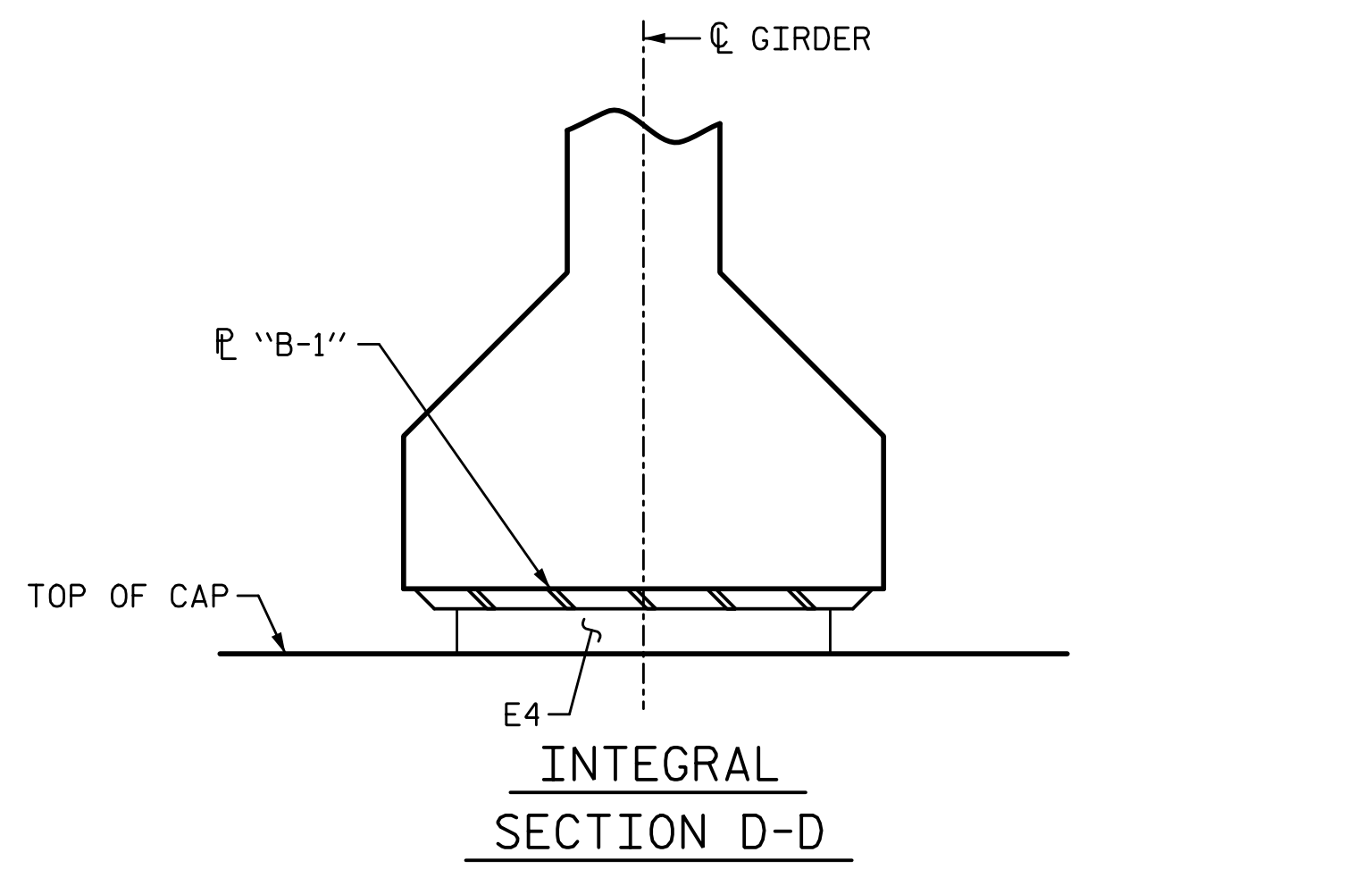


9/14/2022 8:05:59 AM P:\Raleigh\Projects\2018\Division 3 (SEA)\B-5652 (Onslow 33 US17 NBL over Wolf Swamp)\Structures\Drawings\Final\401\_B5652\_SMU\_BG\_660033.dgn

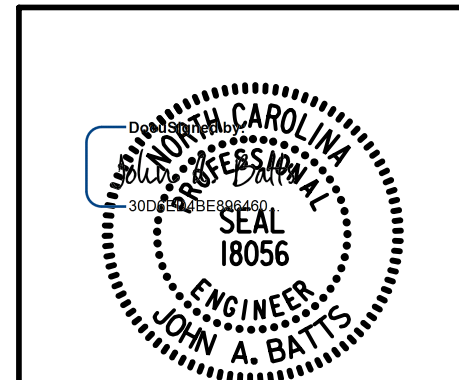


**NOTES:**  
 THE ELASTOMER IN THE STEEL REINFORCED BEARINGS SHALL HAVE A SHEAR MODULUS OF 0.160 KSI, IN ACCORDANCE WITH AASHTO M251.  
 FOR STEEL REINFORCED ELASTOMERIC BEARINGS, SEE SPECIAL PROVISIONS.  
 ELASTOMER IN ALL BEARINGS SHALL BE 60 DUROMETER HARDNESS.

MAXIMUM ALLOWABLE SERVICE LOADS	
D.L.+L.L. (NO IMPACT)	
TYPE V	365 k

PROJECT NO. B-5652  
ONLOW COUNTY  
 STATION: 20+64.00 -L-RT-

STATE OF NORTH CAROLINA  
 DEPARTMENT OF TRANSPORTATION  
 RALEIGH  
 SUPERSTRUCTURE  
**ELASTOMERIC BEARING DETAILS**



DRAWN BY: T. BANKOVICH	DATE: 5-22
CHECKED BY: J.A. BATTS	DATE: 5-22
DESIGN ENGINEER OF RECORD: J.A. BATTS	DATE: 5-22

REVISIONS						SHEET NO.
NO.	BY:	DATE:	NO.	BY:	DATE:	S-12
1			3			TOTAL SHEETS
2			4			26

LICENSURE NO. C-4434  
**DOCUMENT NOT CONSIDERED FINAL UNLESS ALL SIGNATURES COMPLETED**