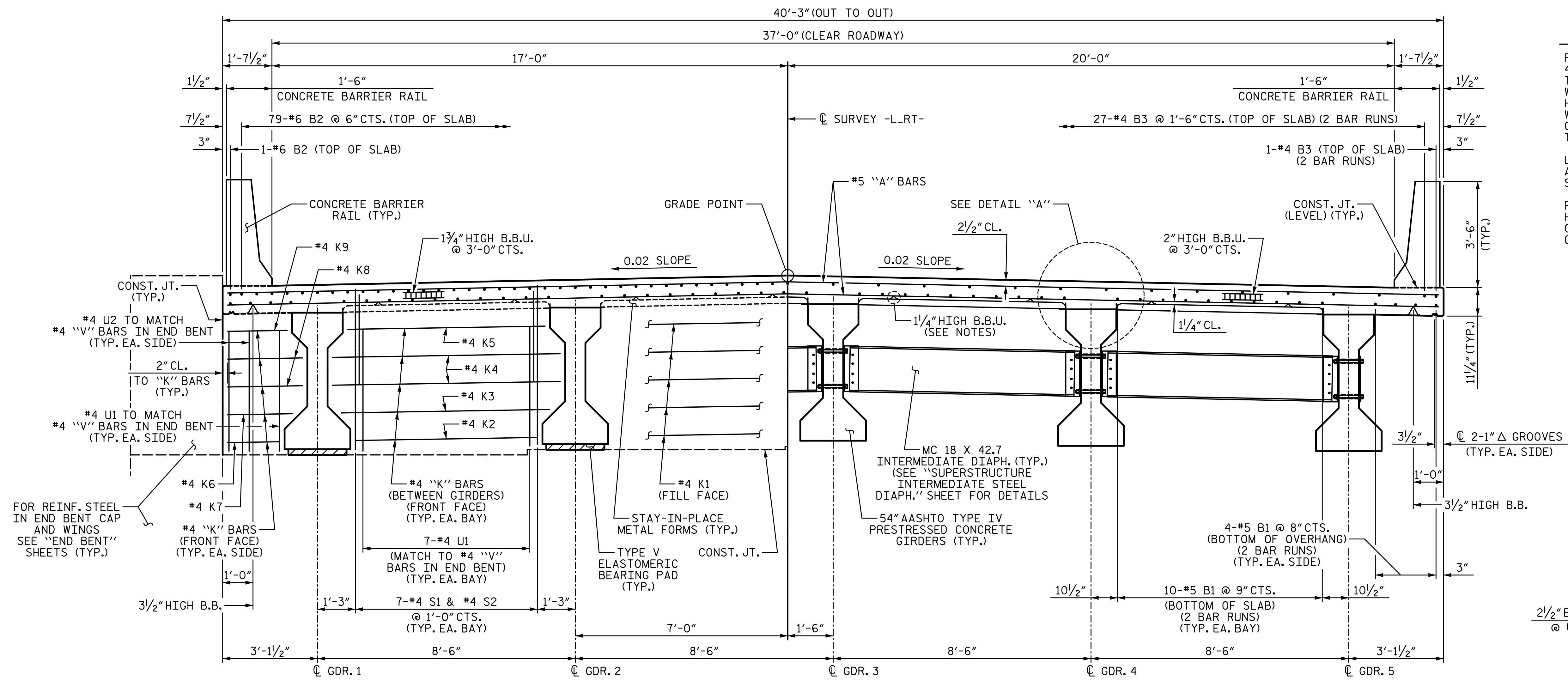
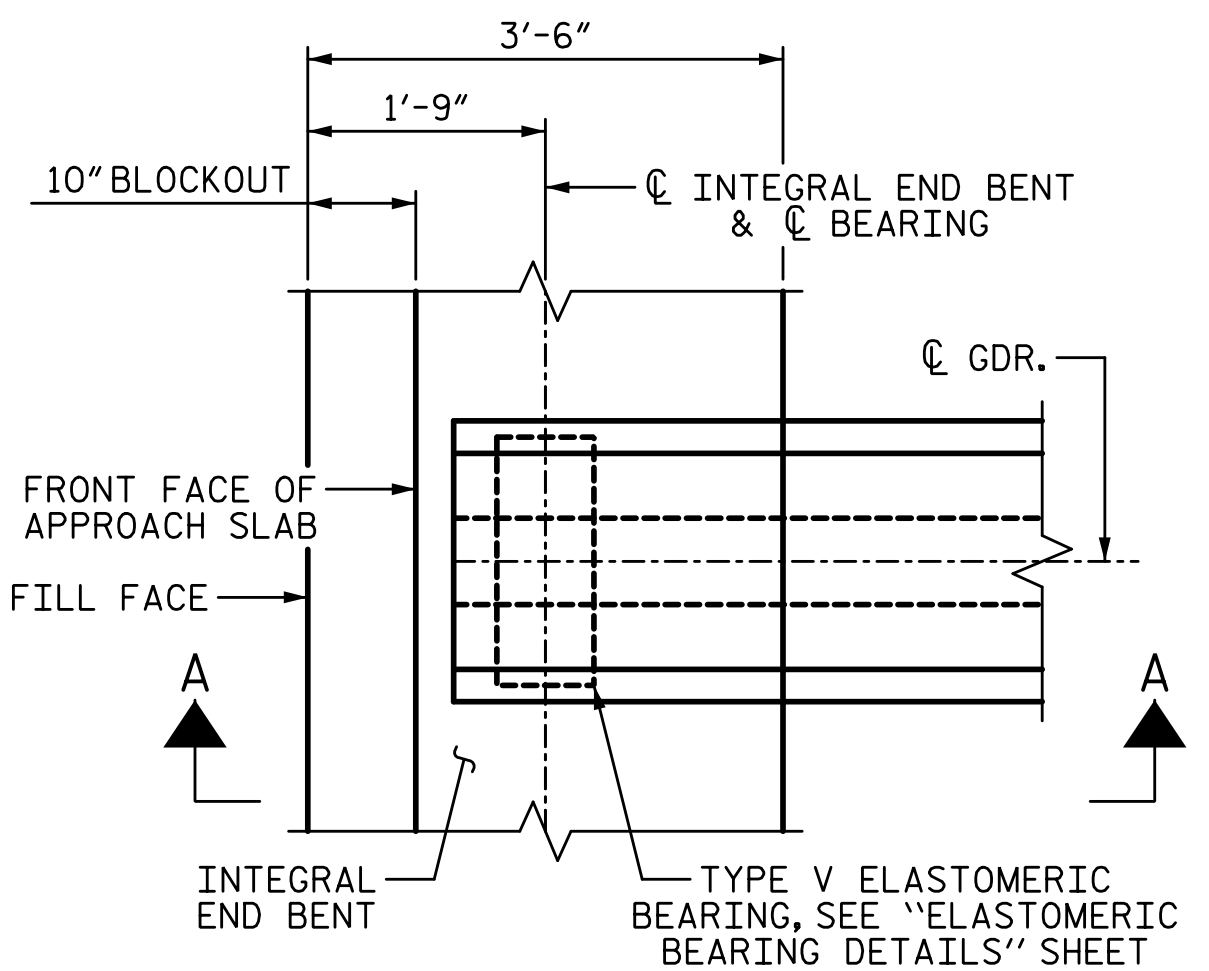


9/14/2022 8:05:55 AM P:\Raleigh\Projects\2018\Division 3 (SEA)\B-5652 (Onslow 33 US17 NBL over Wolf Swamp)\Structures\Drawings\Final\401\_B5652\_SMU\_TS\_660033.dgn

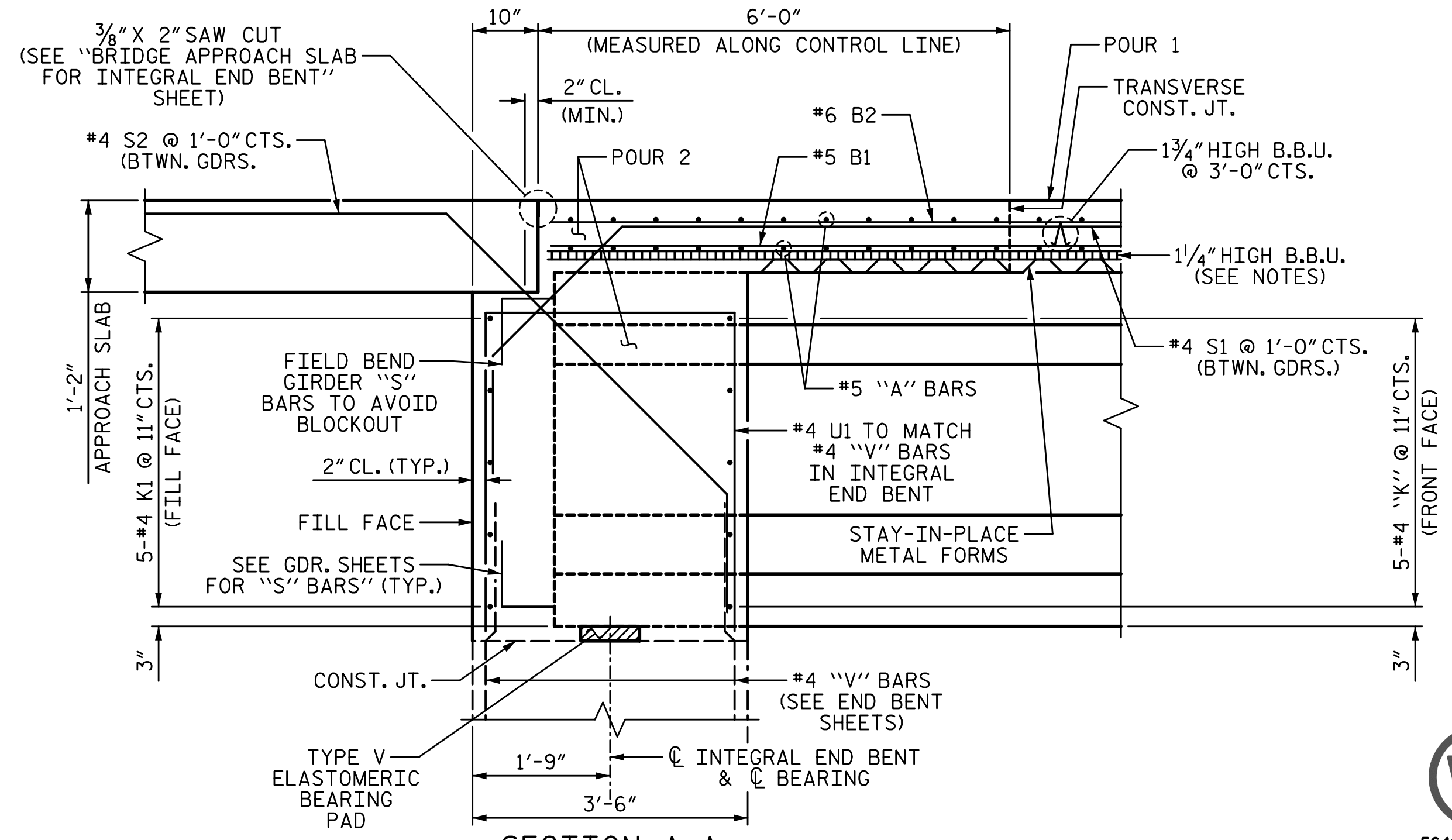


**PARTIAL TYPICAL SECTION**  
(SHOWING INTEGRAL END BENT)

**PARTIAL TYPICAL SECTION**  
(SHOWING INTERMEDIATE DIAPHRAGMS)



**PLAN DETAIL OF END BENT**  
(END BENT 1 SHOWN, END BENT 2 SIMILAR)  
(“S” BARS IN GIRDER NOT SHOWN FOR CLARITY)



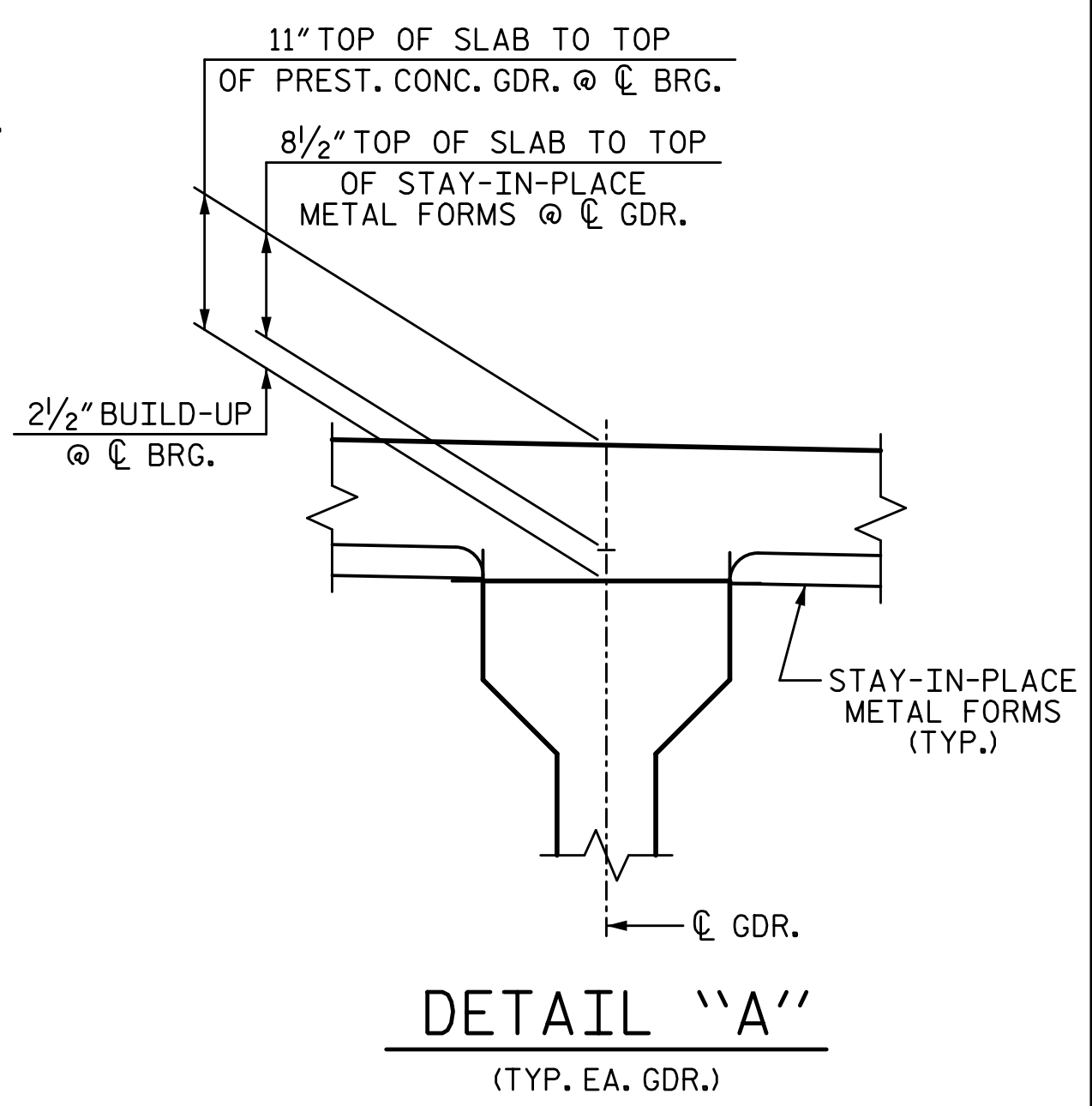
**SECTION THROUGH INTEGRAL END BENT DIAPHRAGM**  
(SEE END BENT SHEETS FOR INTEGRAL END BENT REINFORCING DETAILS)  
(END BENT 1 SHOWN, END BENT 2 SIMILAR)

**NOTES:**

PROVIDE 1 1/4" HIGH BEAM BOLSTERS UPPER AT 4'-0" CTS. ATOP THE STAY-IN-PLACE METAL FORMS TO SUPPORT THE BOTTOM MAT OF "A" BARS. WHEN USING REMOVABLE FORMS, PROVIDE CONTINUOUS HIGH CHAIRS FOR METAL DECK (C.H.C.M.) @ 4'-0" CTS. WITH A HEIGHT TO SUPPORT THE BOTTOM MAT OF "A" BARS A CLEAR DISTANCE OF 2 1/2" ABOVE THE TOP OF THE REMOVABLE FORM.

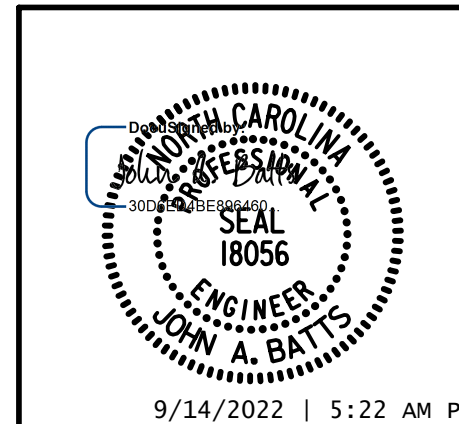
LONGITUDINAL STEEL MAY BE SHIFTED SLIGHTLY, AS NECESSARY, TO AVOID INTERFERENCE WITH STIRRUPS IN PRESTRESSED CONCRETE GIRDERS.

PREVIOUSLY CAST CONCRETE IN THE SPAN SHALL HAVE ATTAINED A MINIMUM COMPRESSIVE STRENGTH OF 3,000 PSI BEFORE ADDITIONAL CONCRETE IS CAST IN THE SPAN.



PROJECT NO. B-5652  
ONLOW COUNTY  
STATION: 20+64.00 -L-RT-

STATE OF NORTH CAROLINA  
DEPARTMENT OF TRANSPORTATION  
RALEIGH  
SUPERSTRUCTURE  
**TYPICAL SECTION**



DRAWN BY: T. BANKOVICH DATE: 5-22  
CHECKED BY: J.A. BATTS DATE: 5-22  
DESIGN ENGINEER OF RECORD: J.A. BATTS DATE: 5-22

REVISIONS				SHEET NO.	
NO.	BY:	DATE:	NO.	BY:	DATE:
1			3		
2			4		
					TOTAL SHEETS 26

**DOCUMENT NOT CONSIDERED FINAL UNLESS ALL SIGNATURES COMPLETED**