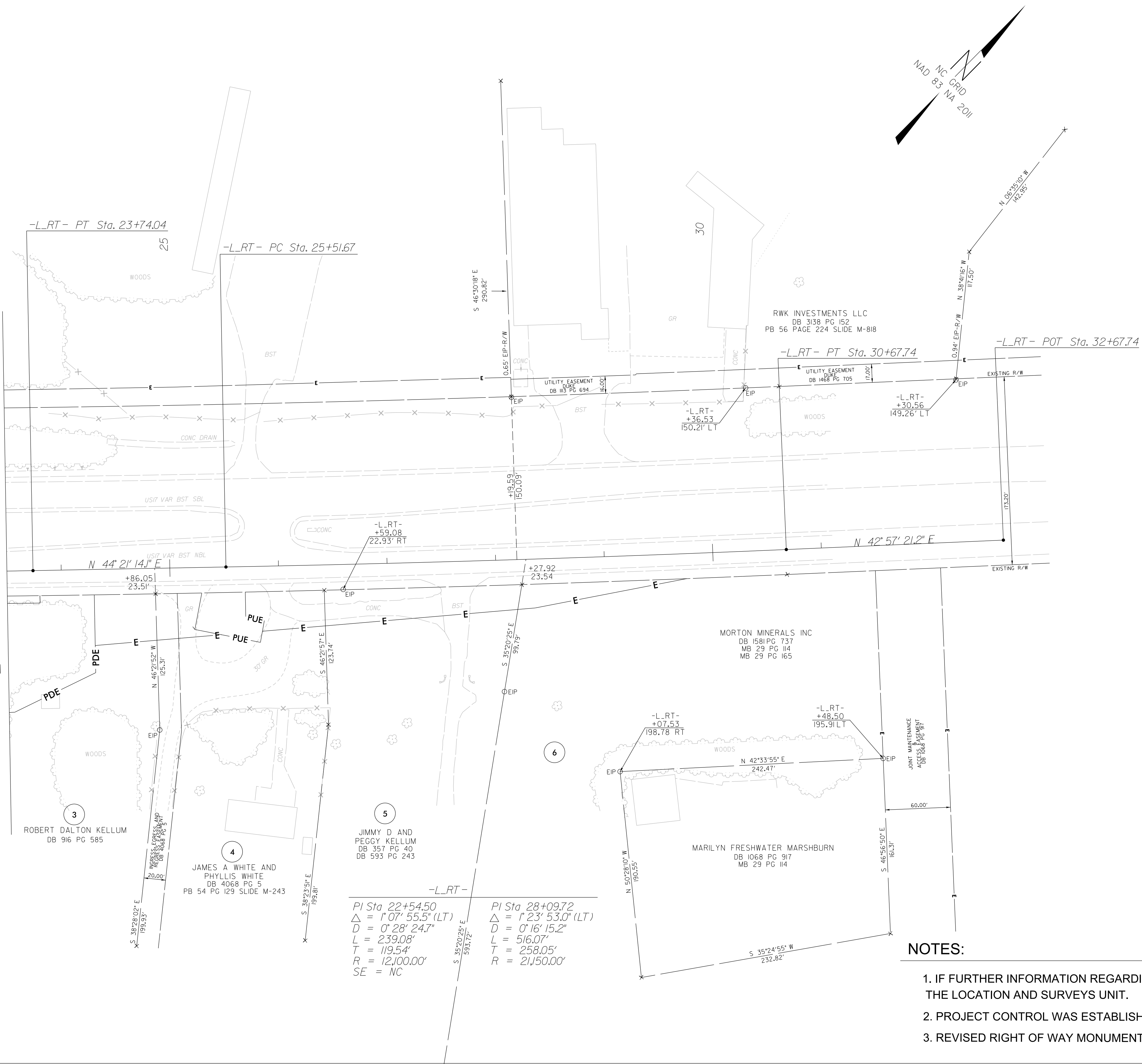


REVISIONS

I:\Projects\Bridges\Bridges\B5652\0033\Working\150_series_revised\B-5652_ls_r\05_rev_221012.dgn
6/2/2022 15:40
C:\Users\atm\OneDrive\Documents\Projects\Bridges\Bridges\B5652\0033\Working\150_series_revised\B-5652_ls_r\05_rev_221012.dgn

MATCHLINE -L_RT- STA. 23 +50.00 SEE SHEET 4



Station	Delta	D	L	T	R	SE
PI Sta 22+54.50	$\Delta = 1^{\circ} 07' 55.5'' (LT)$	$D = 0' 28' 24.7''$	$L = 239.08'$	$T = 119.54'$	$R = 12,100.00'$	SE = NC
PI Sta 28+09.72	$\Delta = 1^{\circ} 23' 53.0'' (LT)$	$D = 0' 16' 15.2''$	$L = 516.07'$	$T = 258.05'$	$R = 21,150.00'$	

NOTES:

1. IF FURTHER INFORMATION REGARDING PROJECT CONTROL IS NEEDED PLEASE CONTACT THE LOCATION AND SURVEYS UNIT.
2. PROJECT CONTROL WAS ESTABLISHED USING GNSS, THE GLOBAL NAVIGATION SATELLITE SYSTEM.
3. REVISED RIGHT OF WAY MONUMENTATION ESTABLISHED 10/06/22.

PROJECT REFERENCE NO. B-5652	SHEET NO. RW05_REV
Location and Surveys	
LOCATION AND SURVEYS UNIT DIVISION 3 5310 BARBADOS BLVD, SUITE 102 CASTLE HAYNE, NORTH CAROLINA 28429	
DOCUMENT NOT CONSIDERED FINAL UNLESS ALL SIGNATURES COMPLETED	

I, Christopher J. Sawyer, PLS, certify that the revised right of way and permanent easement monumentation for this project shown herein was completed under my direct and responsible charge from an actual survey made under my supervision; that all horizontal closures had a minimum ratio of precision of 1:10,000 (Class A). Field work was performed 10/06/22, and all coordinates are based on NAD83/2011. That this survey was performed to meet the requirements of 21NCAC 56.1600 as applicable.

This 13th day of October, 2022.

DocuSigned by:

 Christopher J. Sawyer
 9700CB2E1D21467
 Professional Land Surveyor L-4526