
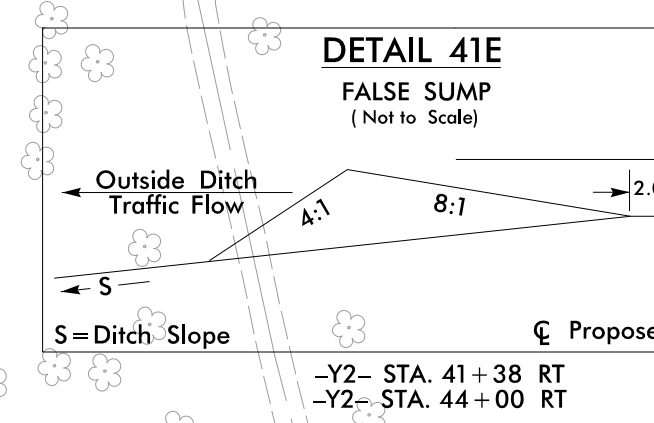
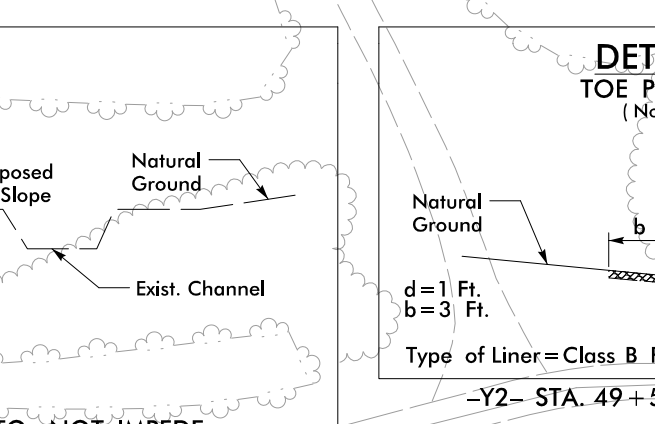
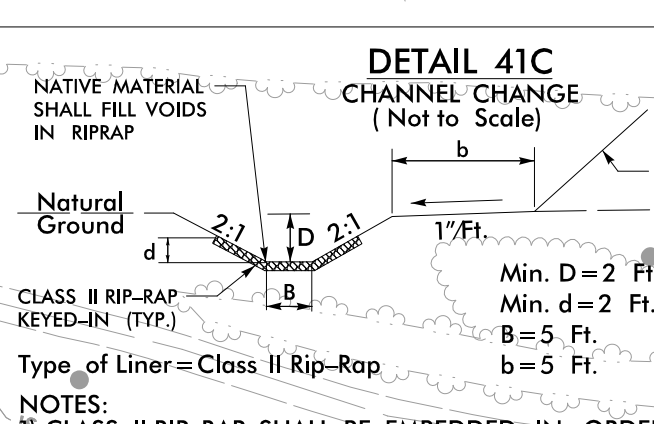
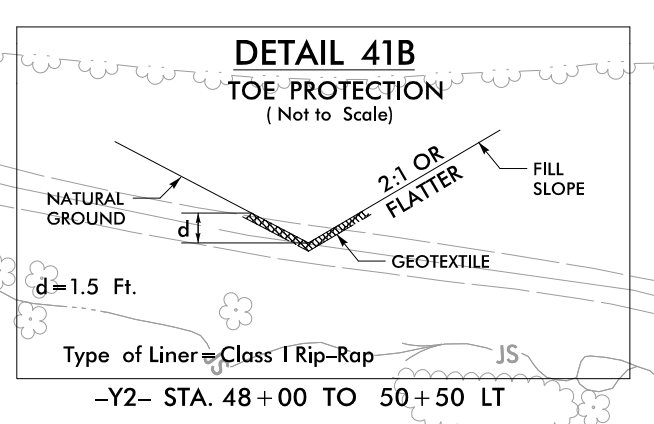
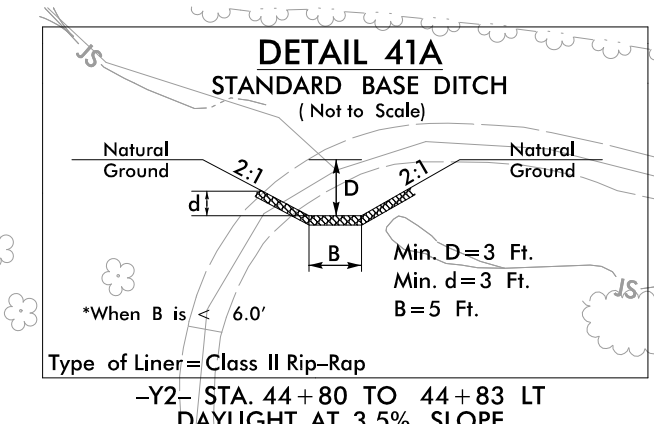
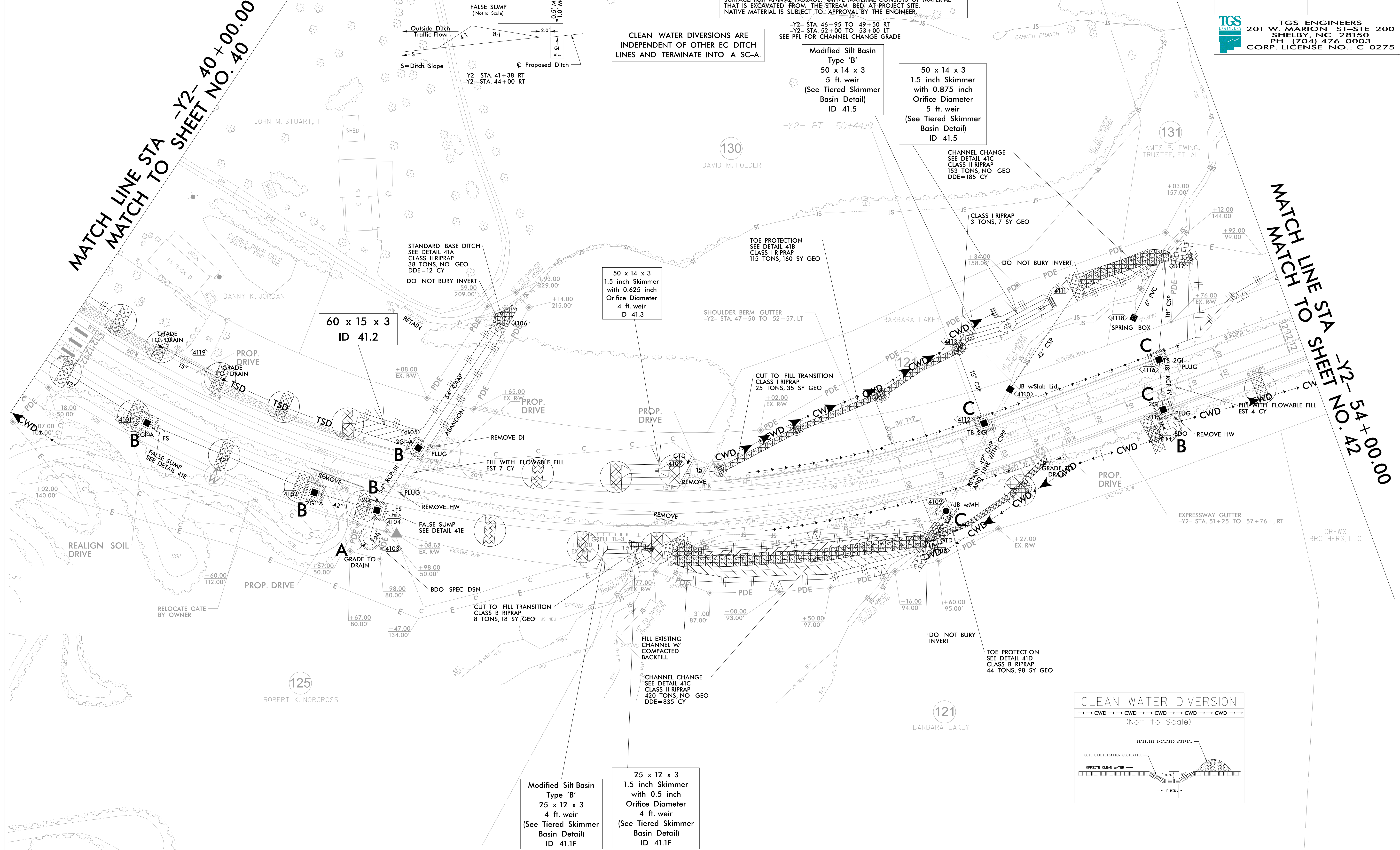


**For Slopes Excavated Greater Than 10 feet
Install Matting for Erosion Control on
Entire Slope as Work Allows.**

**IN LIEU OF ROCK INLET SEDIMENT TRAP TYPE C,
UTILIZE FABRIC INSERT INLET PROTECTION
DEVICES IN AREAS WHERE WATER MAY
POND ON ROAD OPEN TO LIVE TRAFFIC.**

**REFER TO EC-24 FOR STREAMBANK
REFORESTATION AREAS**

PROJECT REFERENCE NO. A-0009CC	SHEET NO. EC-20/CONST.41
ROADWAY DESIGN ENGINEER	HYDRAULICS ENGINEER
 TGS ENGINEERS 201 W. MARION ST. STE 200 SHELBY, NC 28150 PH (704) 476-0003 CORP. LICENSE NO.: C-0275	



**CLEAN WATER DIVERSIONS ARE
INDEPENDENT OF OTHER EC DITCH
LINES AND TERMINATE INTO A SC-A.**

**Modified Silt Basin
Type 'B'
50 x 14 x 3
5 ft. weir
(See Tiered Skimmer
Basin Detail)
ID 41.5**

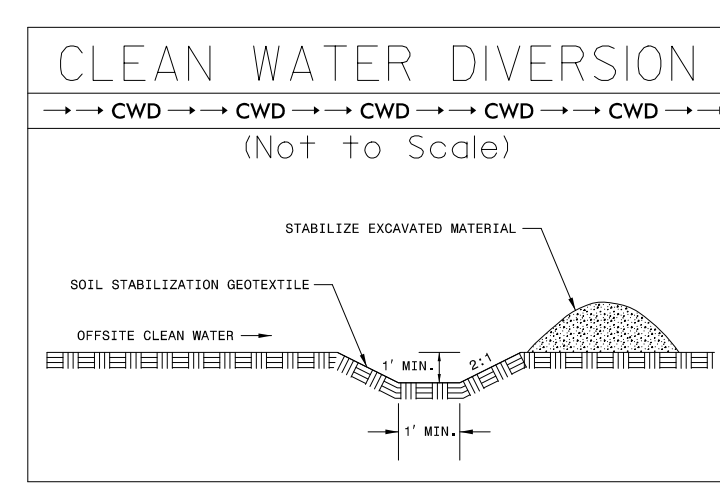
**50 x 14 x 3
1.5 inch Skimmer
with 0.875 inch
Orifice Diameter
5 ft. weir
(See Tiered Skimmer
Basin Detail)
ID 41.5**

**60 x 15 x 3
ID 41.2**


**50 x 14 x 3
1.5 inch Skimmer
with 0.625 inch
Orifice Diameter
4 ft. weir
ID 41.3**

**Modified Silt Basin
Type 'B'
25 x 12 x 3
4 ft. weir
(See Tiered Skimmer
Basin Detail)
ID 41.1F**

**25 x 12 x 3
1.5 inch Skimmer
with 0.5 inch
Orifice Diameter
4 ft. weir
(See Tiered Skimmer
Basin Detail)
ID 41.1F**



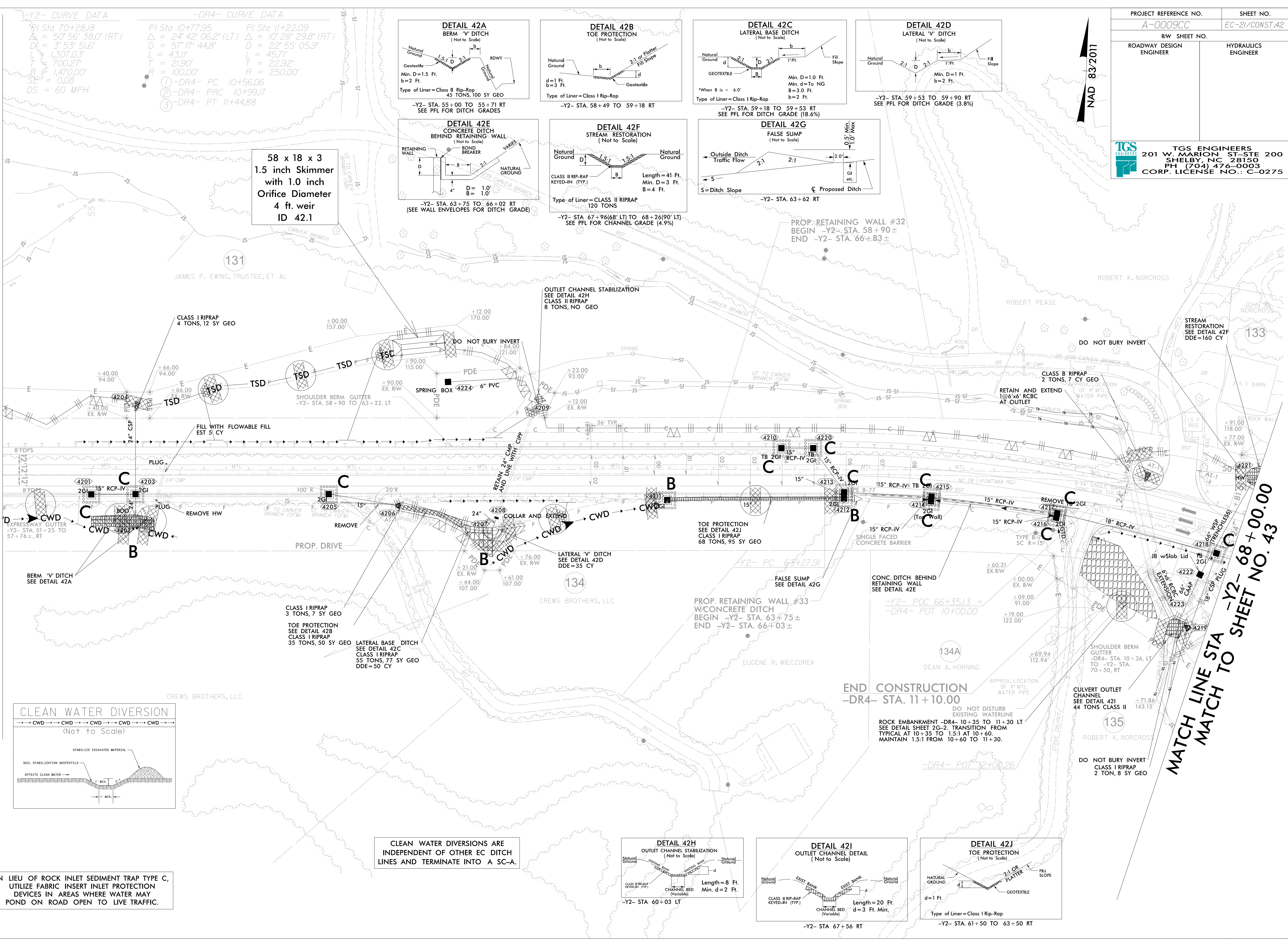
-Y2- CURVE DATA		-DR4- CURVE DATA	
PI Sta 70+28.18	$\Delta = 50^{\circ} 56' 38.0"$ (RT)	PI Sta 10+77.95	$\Delta = 24^{\circ} 42' 06.2"$ (LT)
$D_c = 3^{\circ} 53' 51.6"$	$L = 1,307.03'$	PI Sta 11+22.09	$\Delta = 10^{\circ} 28' 29.8"$ (RT)
$T = 700.27'$	$R = 1,470.00'$	$D = 57^{\circ} 17' 44.8"$	$D = 22^{\circ} 55' 05.9"$
$SE^2 = 0.08$	$DS = 60$ MPH	$L = 43.1'$	$L = 45.7'$
		$T = 21.90'$	$T = 22.92'$
		$R = 100.00'$	$R = 250.00'$
		① -DR4- PC 10+56.06	
		② -DR4- PRC 10+99.17	
		③ -DR4- PT 11+44.88	

PROJECT REFERENCE NO. A-0009CC	SHEET NO. EC-21/CONST.42
RW SHEET NO.	
ROADWAY DESIGN ENGINEER	HYDRAULICS ENGINEER
 TGS ENGINEERS 201 W. MARION ST-STE 200 SHELBY, NC 28150 PH (704) 476-0003 CORP. LICENSE NO.: C-0275	

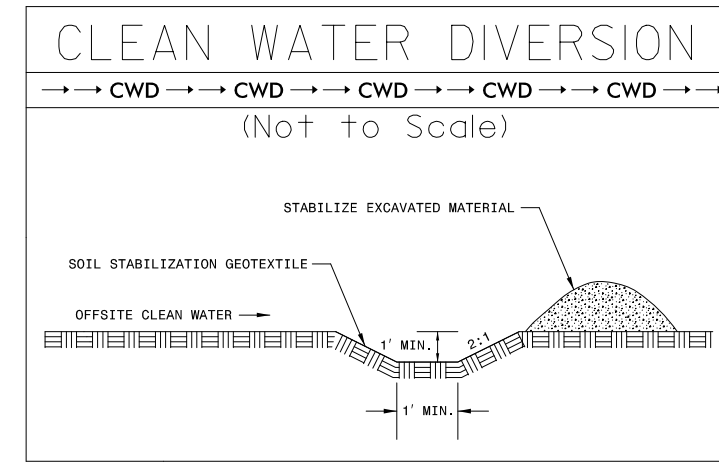
NAD 83/2011

MATCH LINE STA -Y2- 54+00.00
MATCH TO SHEET NO. 41

MATCH LINE STA -Y2- 68+00.00
MATCH TO SHEET NO. 43

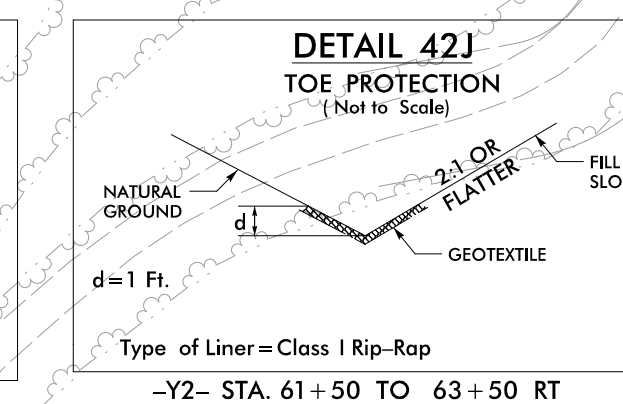
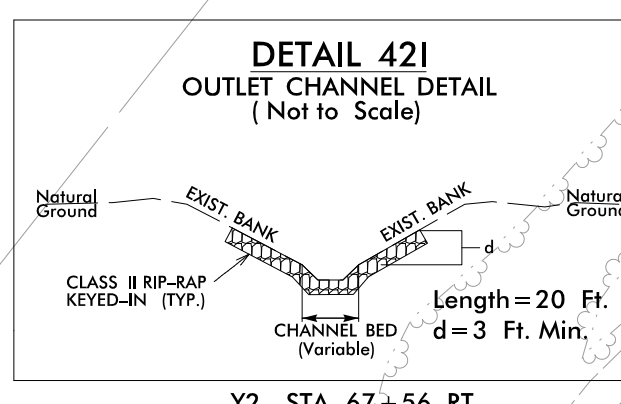
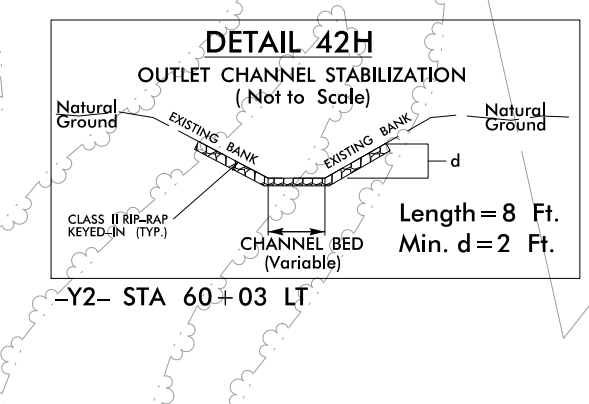
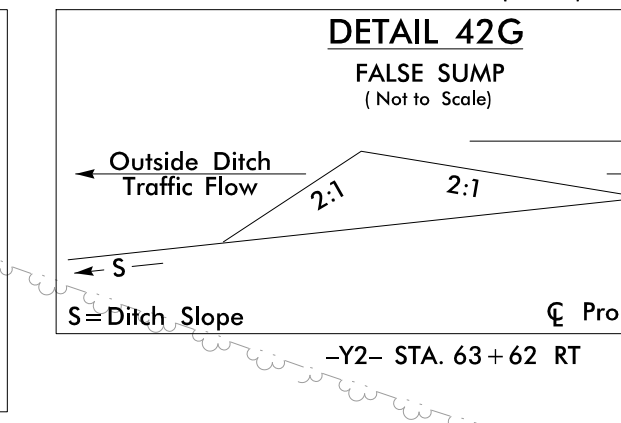
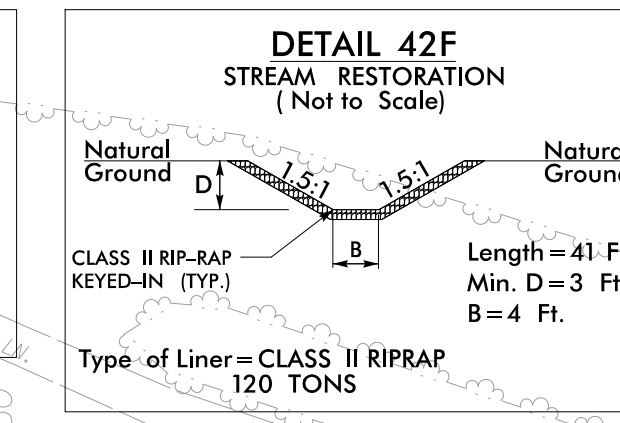
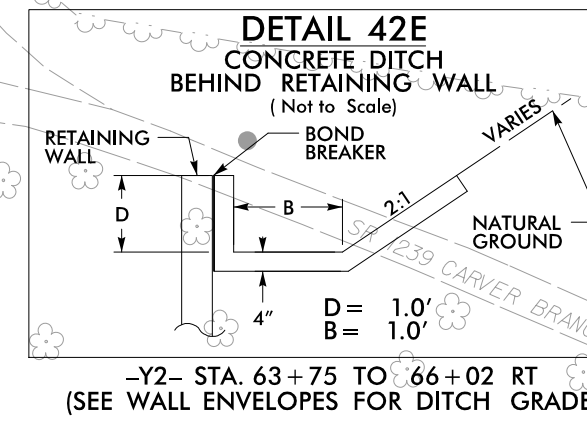
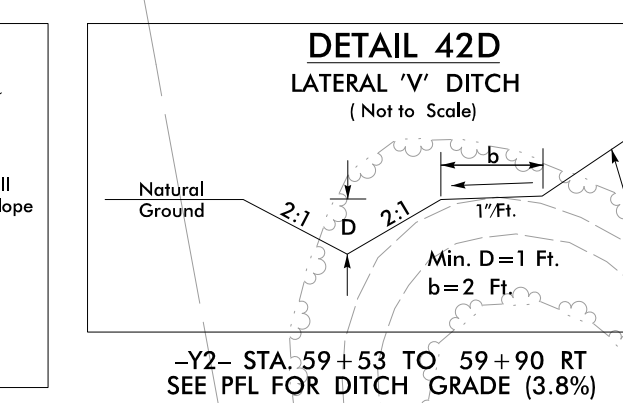
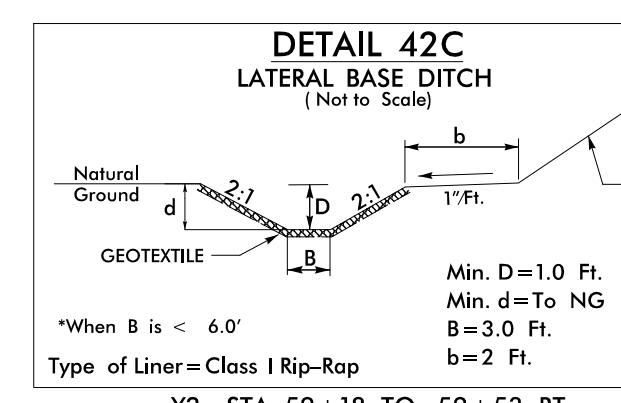
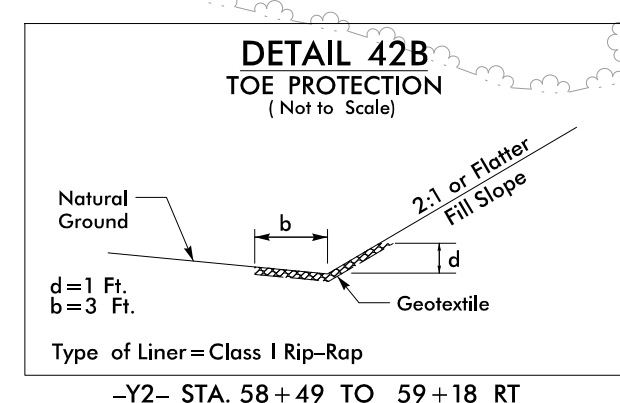
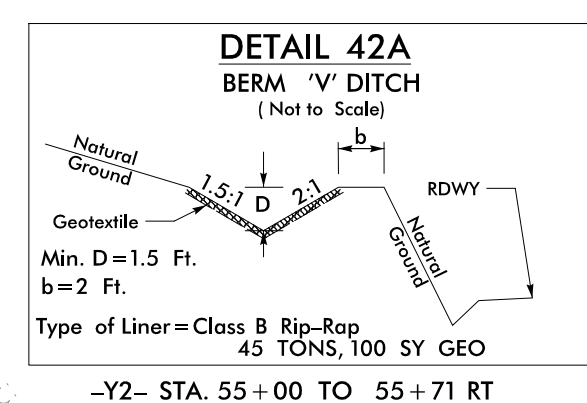


58 x 18 x 3
1.5 inch Skimmer
with 1.0 inch
Orifice Diameter
4 ft. weir
ID 42.1



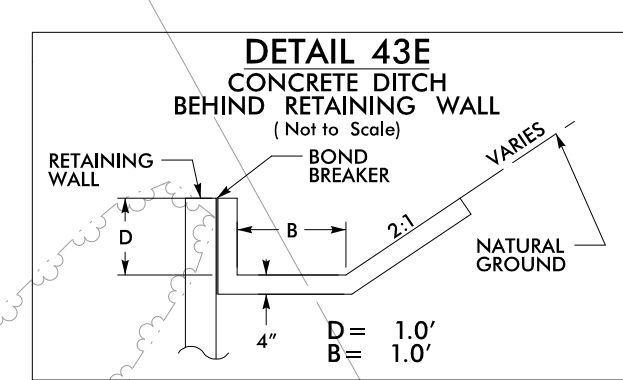
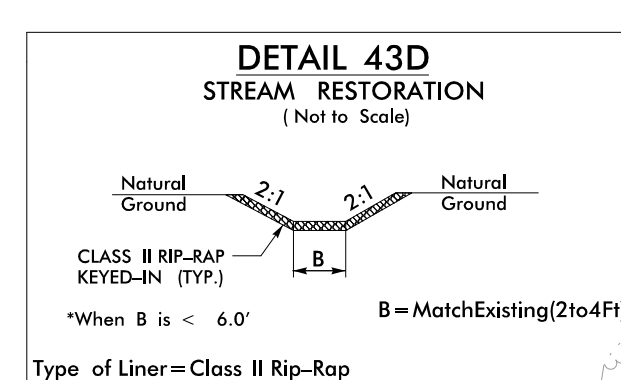
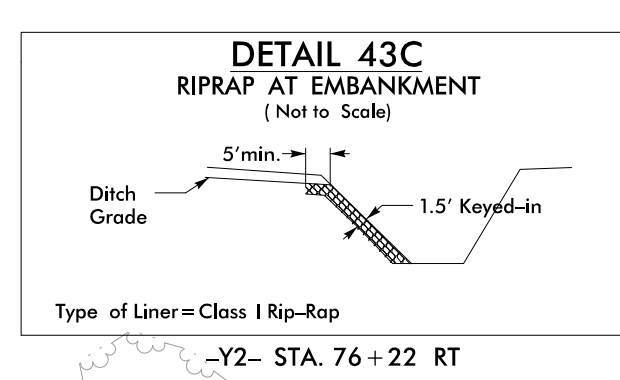
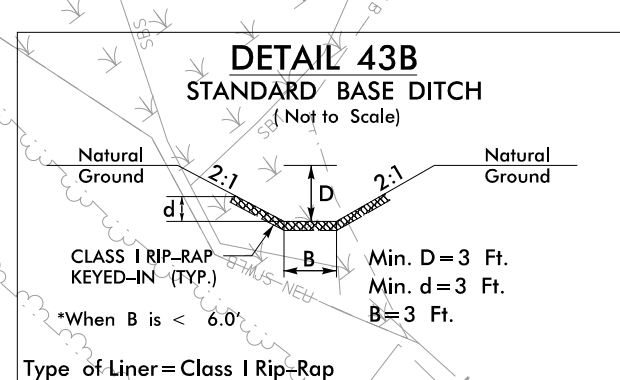
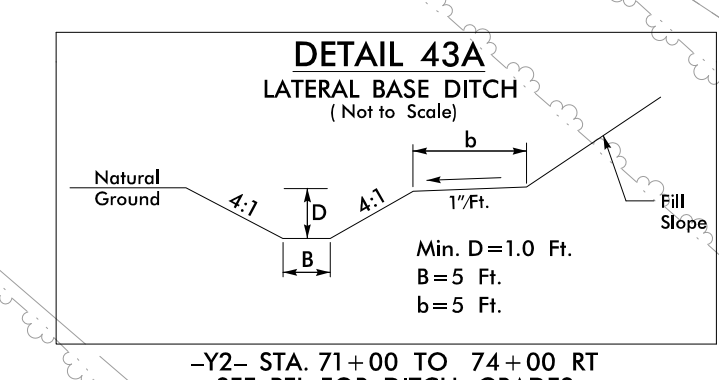
CLEAN WATER DIVERSIONS ARE
INDEPENDENT OF OTHER EC DITCH
LINES AND TERMINATE INTO A SC-A.

IN LIEU OF ROCK INLET SEDIMENT TRAP TYPE C,
UTILIZE FABRIC INSERT INLET PROTECTION
DEVICES IN AREAS WHERE WATER MAY
POND ON ROAD OPEN TO LIVE TRAFFIC.

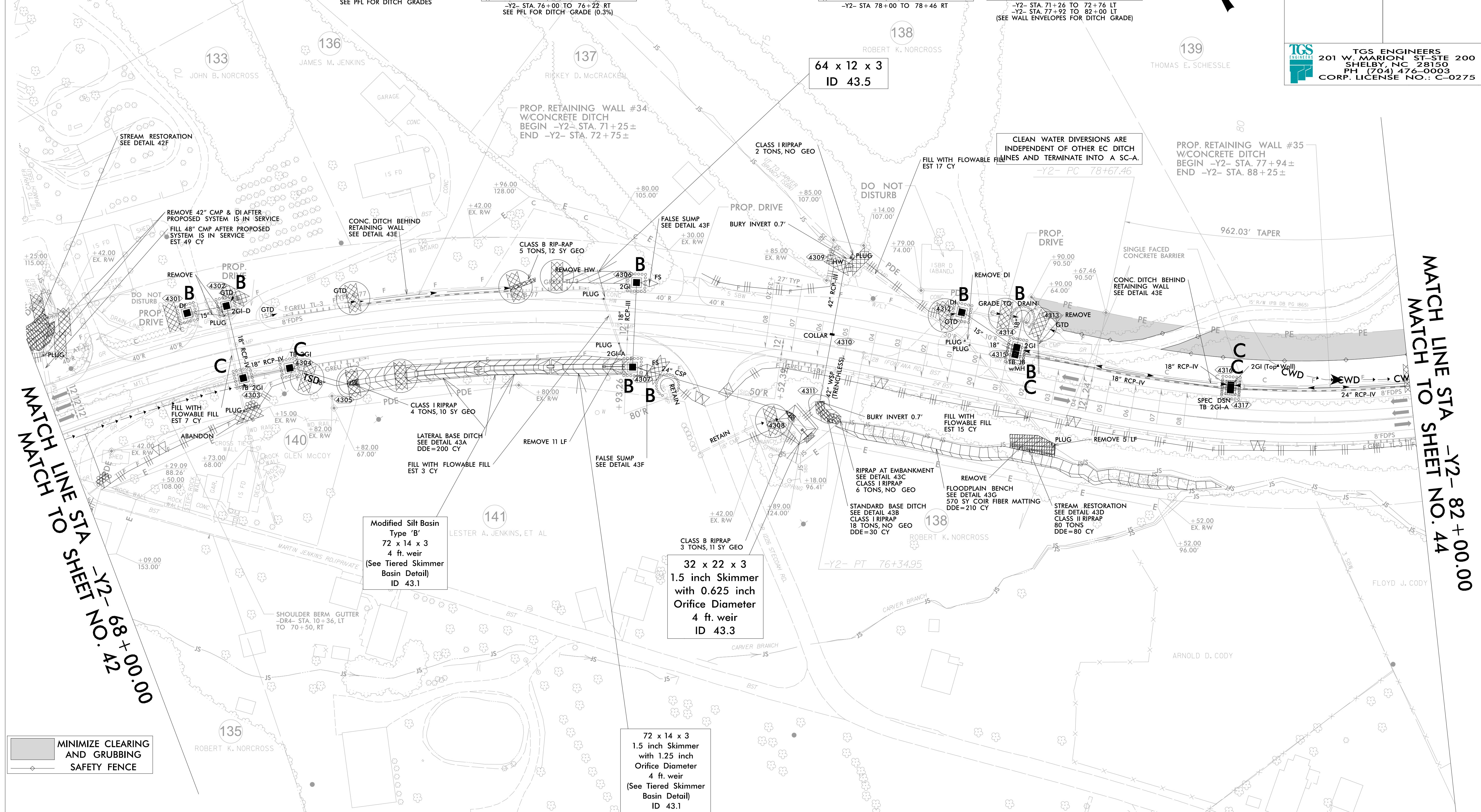


Y2- CURVE DATA

PI Sta 70+28.88	PI Sta 83+84.46
$\Delta = 50^{\circ} 56' 38.8" (RT)$	$\Delta = 52^{\circ} 00' 01.9" (LT)$
$D = 3' 53' 51.6"$	$D = 5' 24' 18.9"$
$L = 1307.03'$	$L = 962.04'$
$T = 708.27'$	$T = 517.00'$
$R = 1470.00'$	$R = 1060.00'$
$E = 0.08$	$E = 0.08$
$DS = 60 \text{ MPH}$	$DS = 55 \text{ MPH}$



PROJECT REFERENCE NO. A-0009CC	SHEET NO. EC-22/CONST.43
RW SHEET NO.	
ROADWAY DESIGN ENGINEER	HYDRAULICS ENGINEER
TGS ENGINEERS 201 W. MARION ST-STE 200 SHELBY, NC 28150 PH (704) 476-0003 CORP. LICENSE NO.: C-0275	



MATCH LINE TO SHEET NO. 42
-Y2- 68+00.00

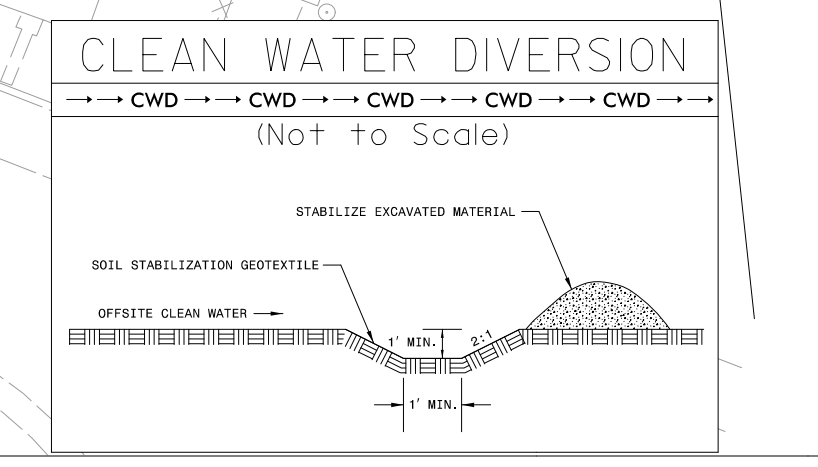
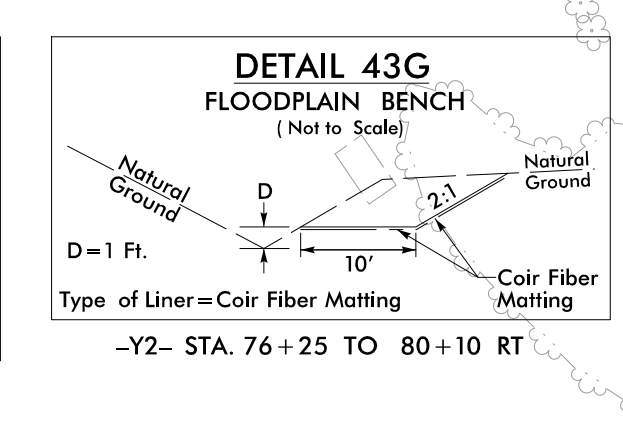
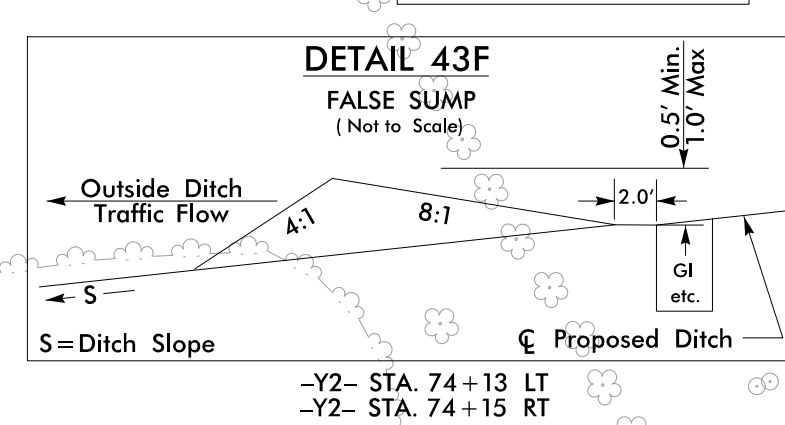
MATCH LINE TO SHEET NO. 44
-Y2- 82+00.00



IN LIEU OF ROCK INLET SEDIMENT TRAP TYPE C, UTILIZE FABRIC INSERT INLET PROTECTION DEVICES IN AREAS WHERE WATER MAY POND ON ROAD OPEN TO LIVE TRAFFIC.

REFER TO EC-24 FOR STREAMBANK REFORESTATION AREAS

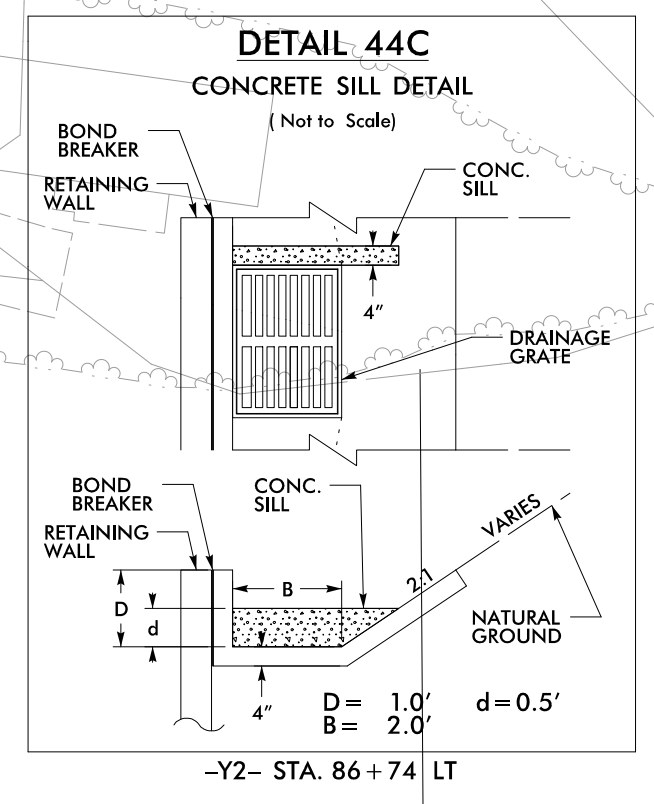
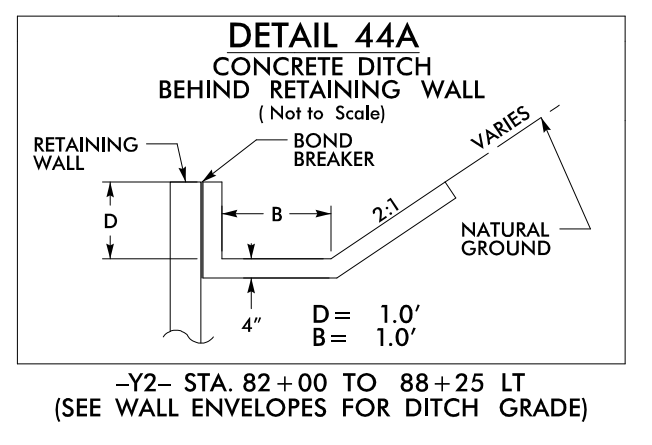
For Slopes Excavated Greater Than 10 feet Install Matting for Erosion Control on Entire Slope as Work Allows.



For Slopes Excavated Greater Than 10 feet
Install Matting for Erosion Control on
Entire Slope as Work Allows.

IN LIEU OF ROCK INLET SEDIMENT TRAP TYPE C,
UTILIZE FABRIC INSERT INLET PROTECTION
DEVICES IN AREAS WHERE WATER MAY
POND ON ROAD OPEN TO LIVE TRAFFIC.

MINIMIZE CLEARING
AND GRUBBING
SAFETY FENCE



PROJECT REFERENCE NO. A-0009CC	SHEET NO. EC-23/CONST.44
RW SHEET NO.	
ROADWAY DESIGN ENGINEER	HYDRAULICS ENGINEER
TGS ENGINEERS 201 W. MARION ST-STE 200 SHELBY, NC 28150 PH (704) 476-0003 CORP. LICENSE NO.: C-0275	

NAD 83/2011

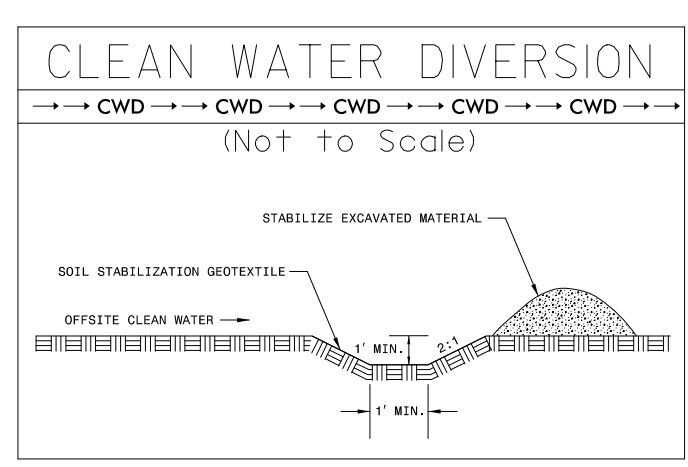
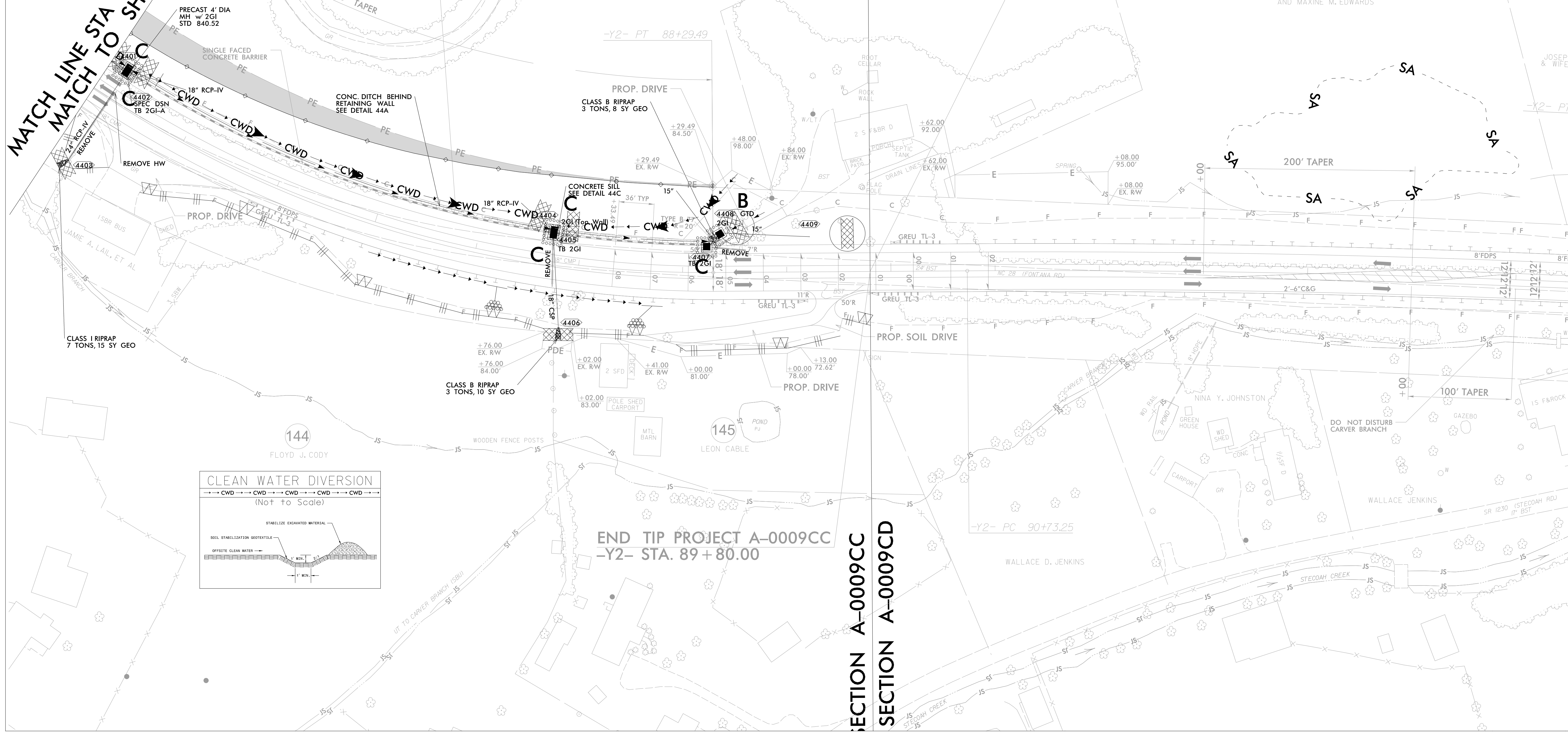
MATCH LINE STA -Y2- 82+00.00
MATCH TO SHEET NO. 43

PROP. RETAINING WALL #35
W/CONCRETE DITCH
BEGIN -Y2- STA. 77+94±
END -Y2- STA. 88+25±

139
THOMAS E. SCHIESSLE

BEGIN TIP PROJECT A-0009CD
-Y2- STA. 89+80.00


143
PATRICIA LYNN EDWARDS
JOHN CRAIG EDWARDS
AND MAXINE M. EDWARDS



END TIP PROJECT A-0009CC
-Y2- STA. 89+80.00

SECTION A-0009CC
SECTION A-0009CD

SEE RF-2, RF-3, AND PROJECT SPECIAL PROVISIONS

PROJECT REFERENCE NO.		SHEET NO.	
A-0009CC		EC-24	
RW SHEET NO.			
ROADWAY DESIGN ENGINEER		HYDRAULICS ENGINEER	
 TGS ENGINEERS 201 W. MARION ST-STE 200 SHELBY, NC 28150 PH (704) 476-0003 CORP. LICENSE NO.: C-0275			

