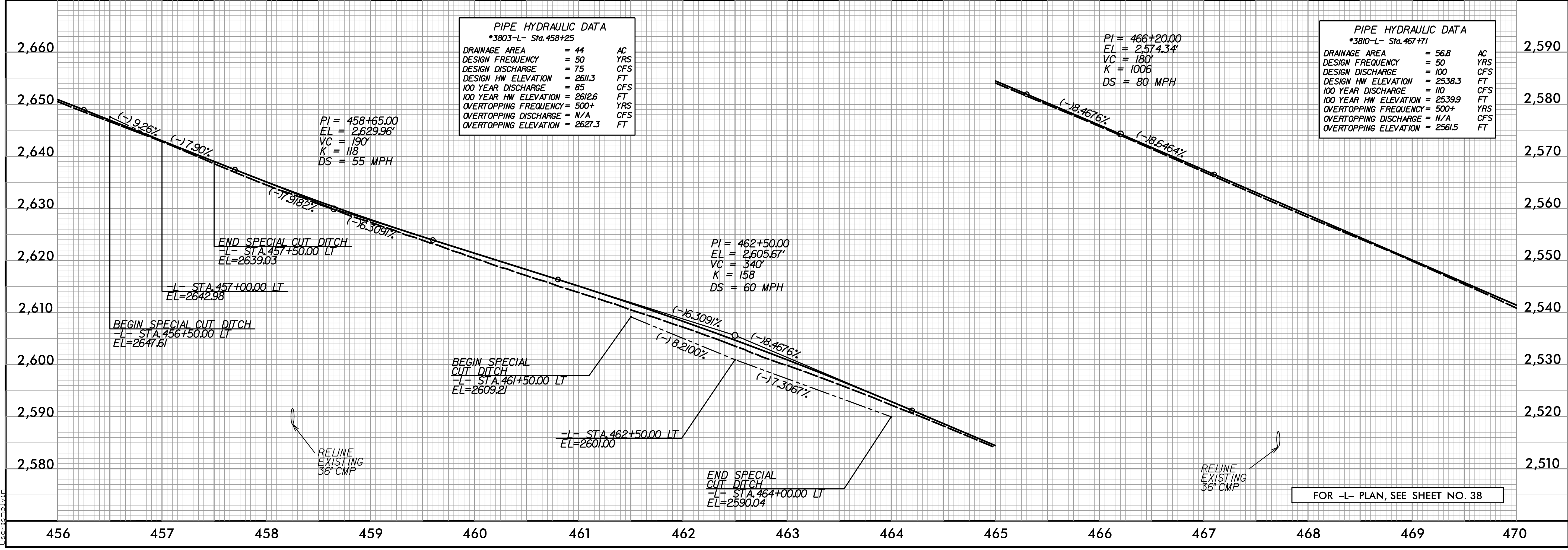
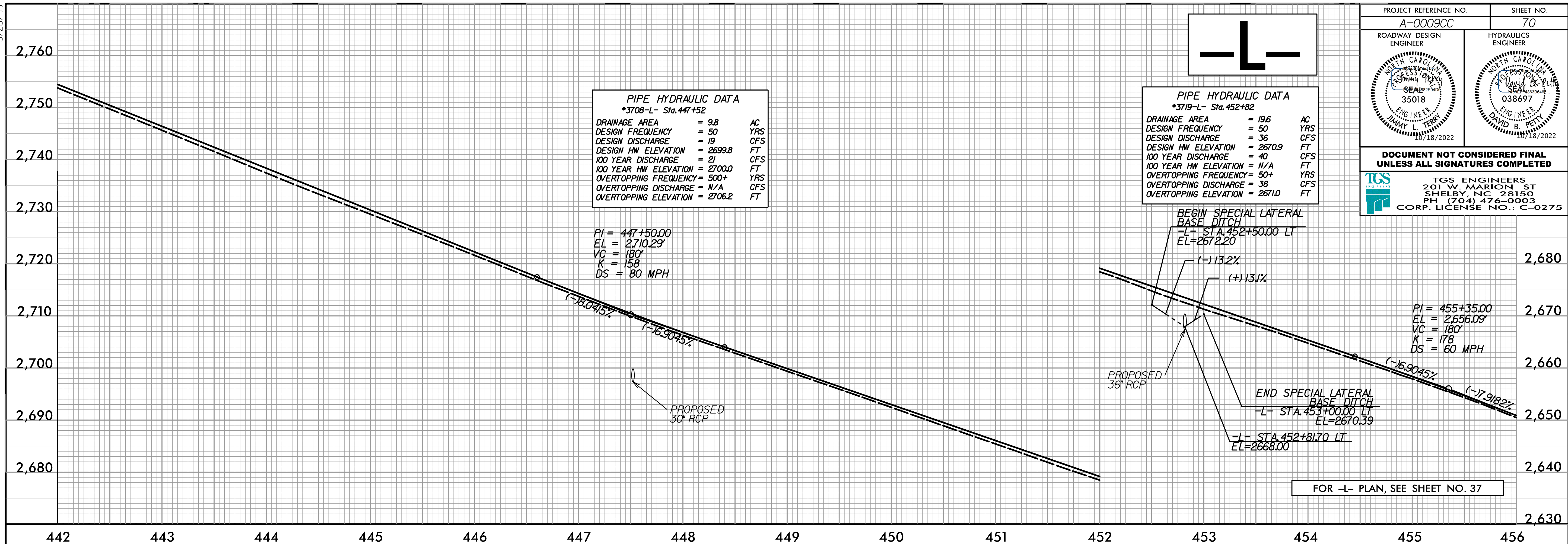
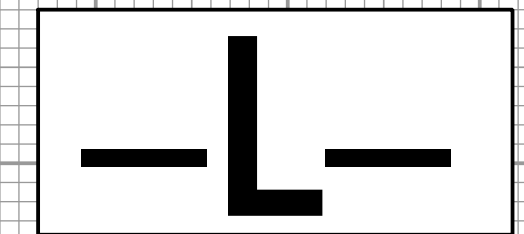


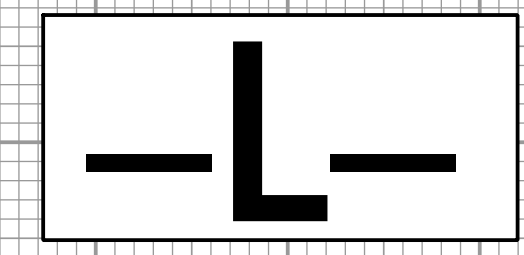
5/28/2022

PROJECT REFERENCE NO. A-0009CC	SHEET NO. 70
ROADWAY DESIGN ENGINEER SEA 35018 JIMMY L. TERRY 11/18/2022	HYDRAULICS ENGINEER DAVID B. PETT 038697 11/18/2022
DOCUMENT NOT CONSIDERED FINAL UNLESS ALL SIGNATURES COMPLETED	
TGS ENGINEERS 201 W. MARION ST SHELBY, NC 28150 PH (704) 476-0003 CORP. LICENSE NO.: C-0275	



I:\Projects\A-0009\Roadway\Proj\A-0009\CC_Plan_Sheets\A-0009\CC_Rdy_pfl_Sheets.dgn

5/28/2022



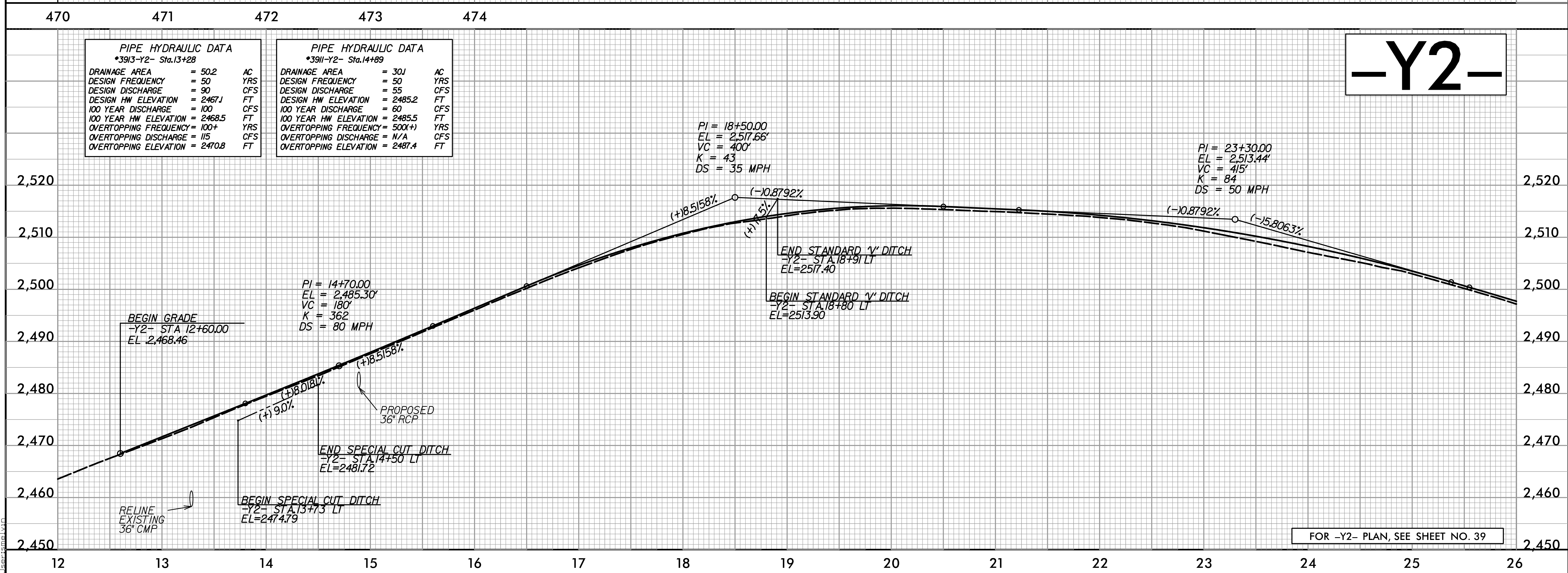
PROJECT REFERENCE NO. A-0009CC	SHEET NO. 71
ROADWAY DESIGN ENGINEER	HYDRAULICS ENGINEER
DOCUMENT NOT CONSIDERED FINAL UNLESS ALL SIGNATURES COMPLETED	
 TGS ENGINEERS 201 W. MARION ST SHELBY, NC 28150 PH (704) 476-0003 CORP. LICENSE NO.: C-0275	



FOR -L- PLAN, SEE SHEET NO. 39

PIPE HYDRAULIC DATA	
*3913-Y2- Sta.13+28	
DRAINAGE AREA	= 50.2 AC
DESIGN FREQUENCY	= 50 YRS
DESIGN DISCHARGE	= 90 CFS
DESIGN HW ELEVATION	= 2467.1 FT
100 YEAR DISCHARGE	= 100 CFS
100 YEAR HW ELEVATION	= 2468.5 FT
OVERTOPPING FREQUENCY	= 100+ YRS
OVERTOPPING DISCHARGE	= 115 CFS
OVERTOPPING ELEVATION	= 2470.8 FT

PIPE HYDRAULIC DATA	
*3911-Y2- Sta.14+89	
DRAINAGE AREA	= 30.1 AC
DESIGN FREQUENCY	= 50 YRS
DESIGN DISCHARGE	= 55 CFS
DESIGN HW ELEVATION	= 2485.2 FT
100 YEAR DISCHARGE	= 60 CFS
100 YEAR HW ELEVATION	= 2485.5 FT
OVERTOPPING FREQUENCY	= 500+ YRS
OVERTOPPING DISCHARGE	= N/A CFS
OVERTOPPING ELEVATION	= 2487.4 FT



-Y2-

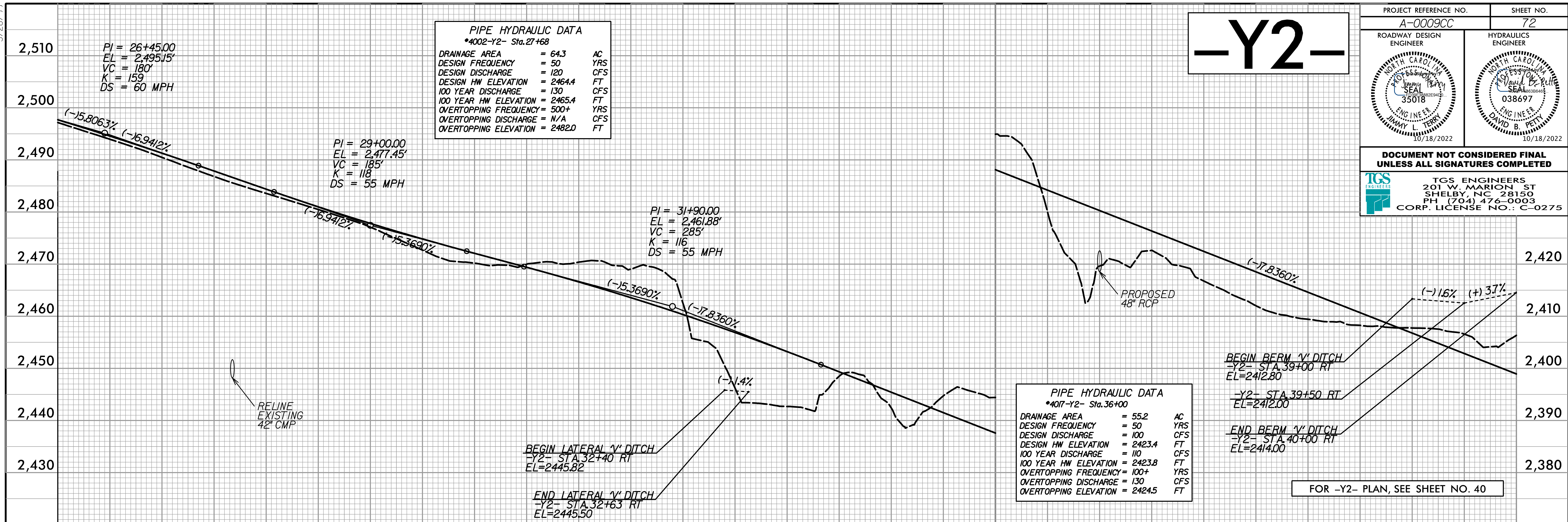
FOR -Y2- PLAN, SEE SHEET NO. 39

I:\Projects\A-0009\Roadway\Proj\A-0009CC_Plan_Sheets\A-0009CC_Rdy_pfl_Sheets.dgn

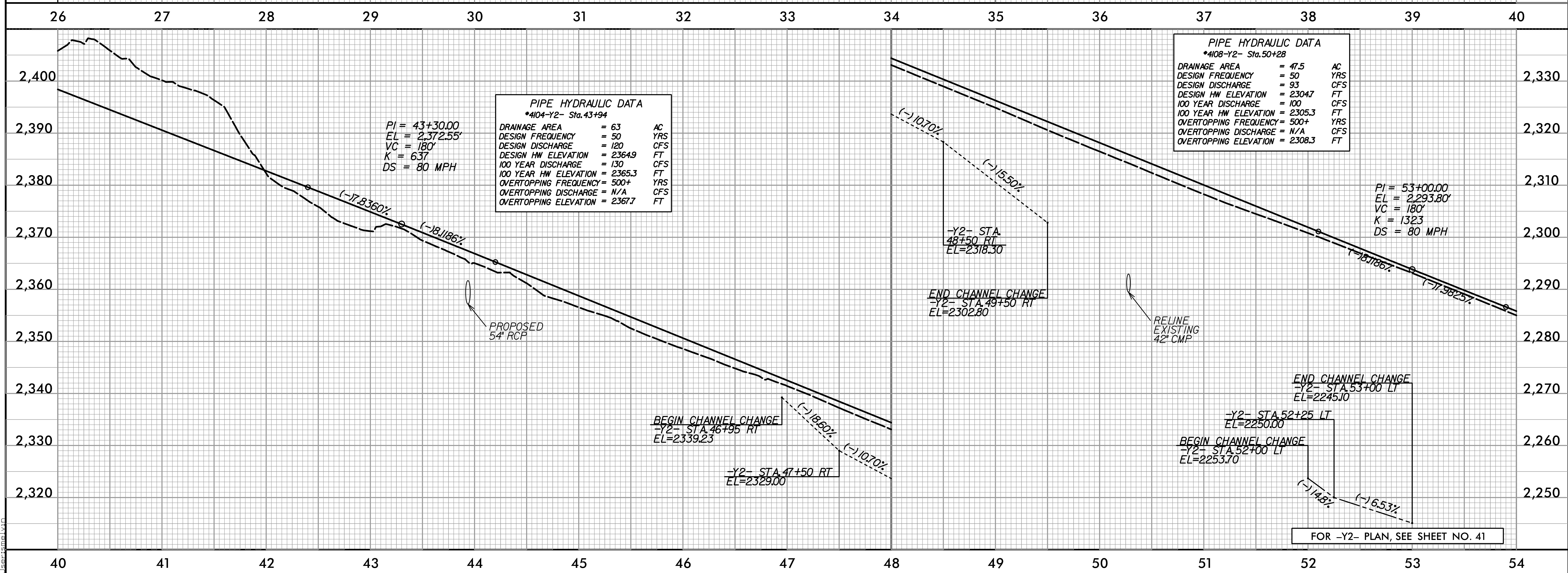
5/28/2022

-Y2-

PROJECT REFERENCE NO. A-0009CC	SHEET NO. 72
ROADWAY DESIGN ENGINEER	HYDRAULICS ENGINEER
DOCUMENT NOT CONSIDERED FINAL UNLESS ALL SIGNATURES COMPLETED	
TGS ENGINEERS 201 W. MARION ST SHELBY, NC 28150 PH (704) 476-0003 CORP. LICENSE NO.: C-0275	



FOR -Y2- PLAN, SEE SHEET NO. 40



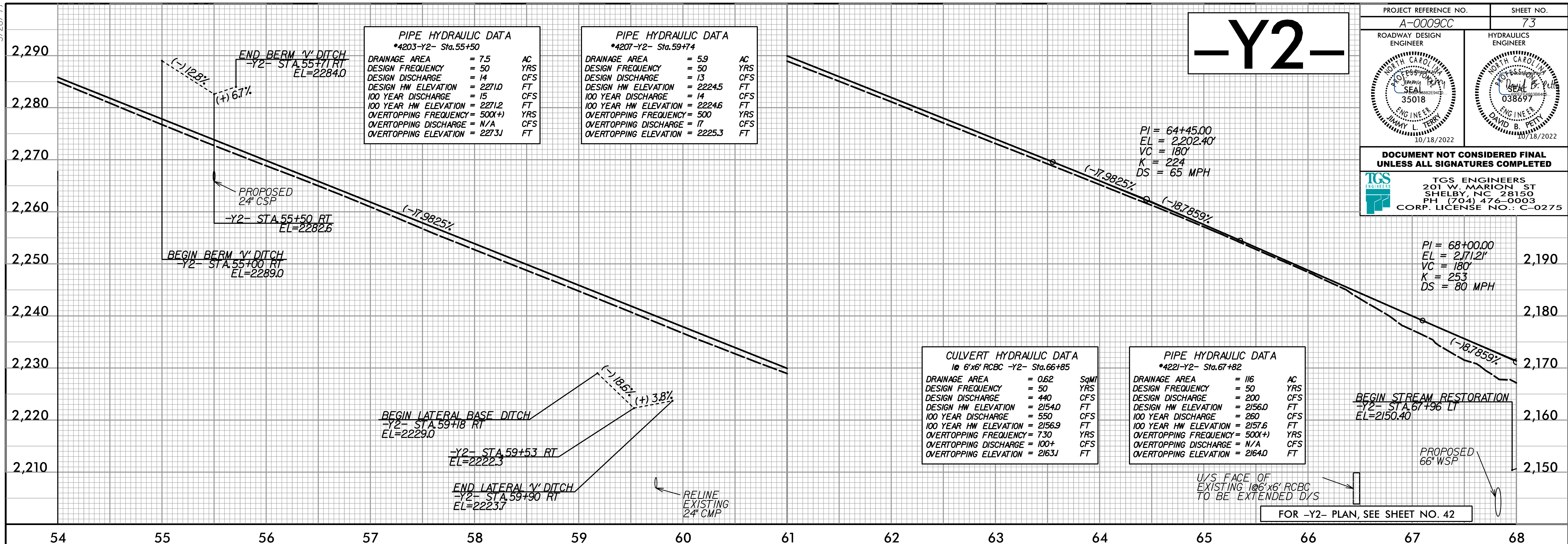
FOR -Y2- PLAN, SEE SHEET NO. 41

I:\Projects\A-0009CC\Roadway\Proj\A-0009CC_Plan_Sheets\A-0009CC_Rdy_pfl_Sheets.dgn

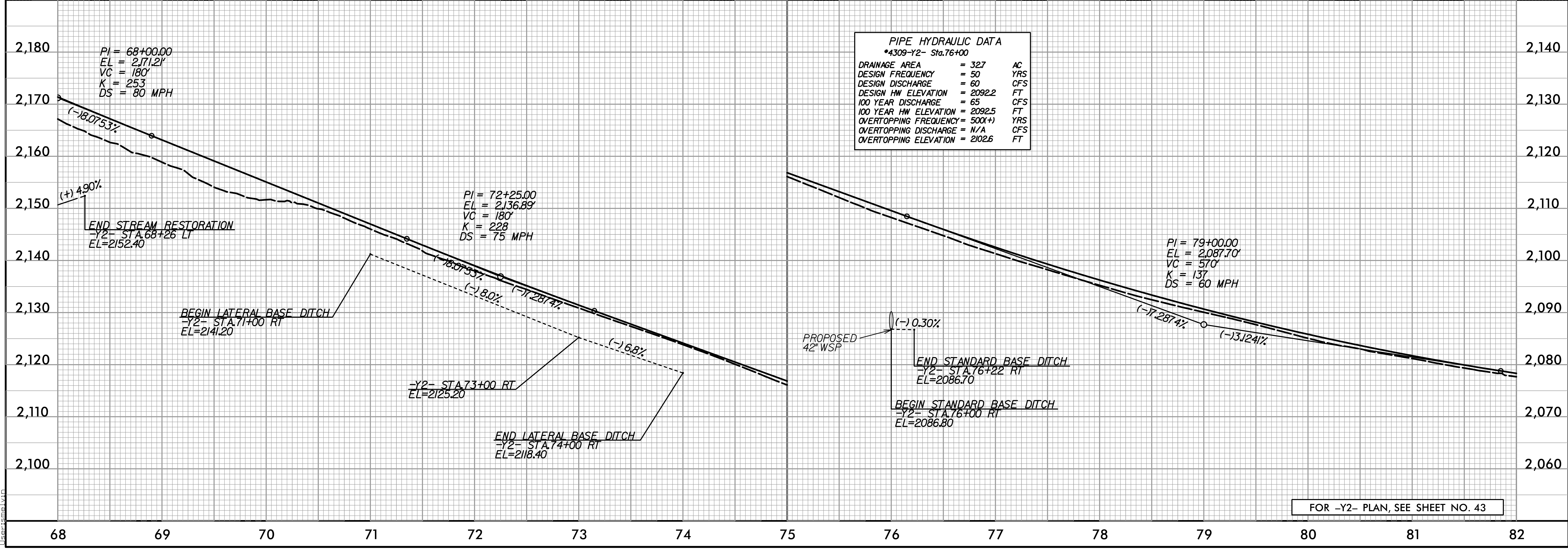
5/28/2022

-Y2-

PROJECT REFERENCE NO. A-0009CC	SHEET NO. 73
ROADWAY DESIGN ENGINEER	HYDRAULICS ENGINEER
10/18/2022	
DOCUMENT NOT CONSIDERED FINAL UNLESS ALL SIGNATURES COMPLETED	
 TGS ENGINEERS 201 W. MARION ST SHELBY, NC 28150 PH (704) 476-0003 CORP. LICENSE NO.: C-0275	



X:\Projects\A-0009\Roadway\Proj\A-0009CC_Plan_Sheets\A-0009CC_Rdy_pfl_Sheets.dgn

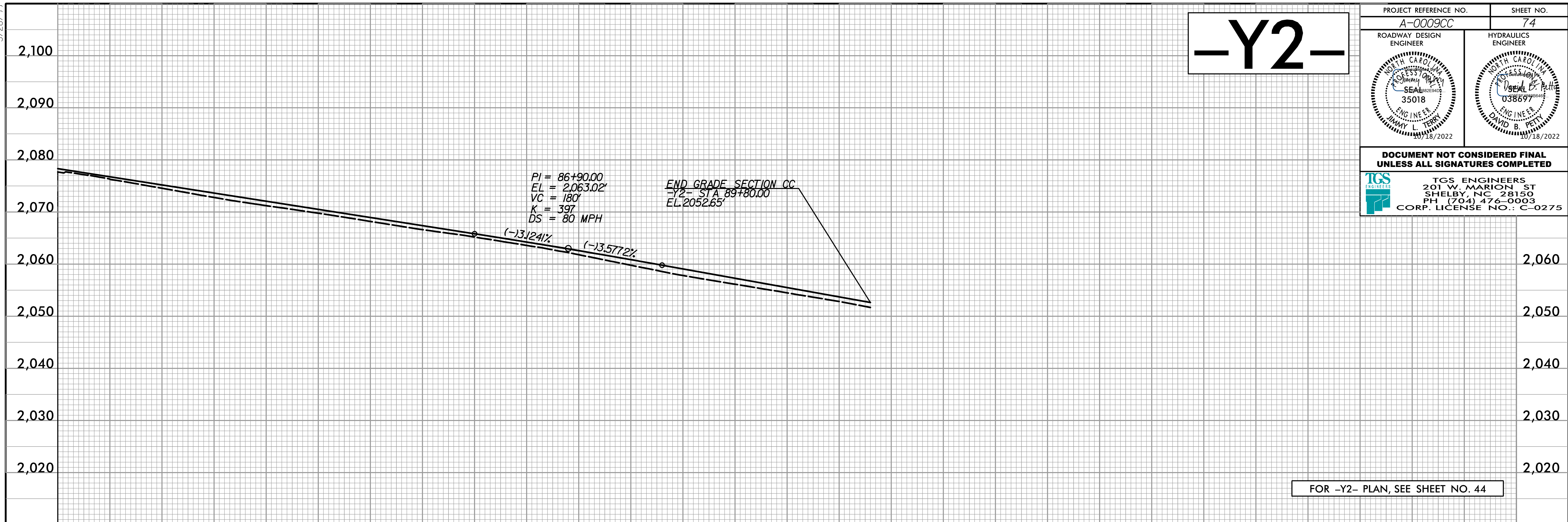


FOR -Y2- PLAN, SEE SHEET NO. 43

5/28/99

-Y2-

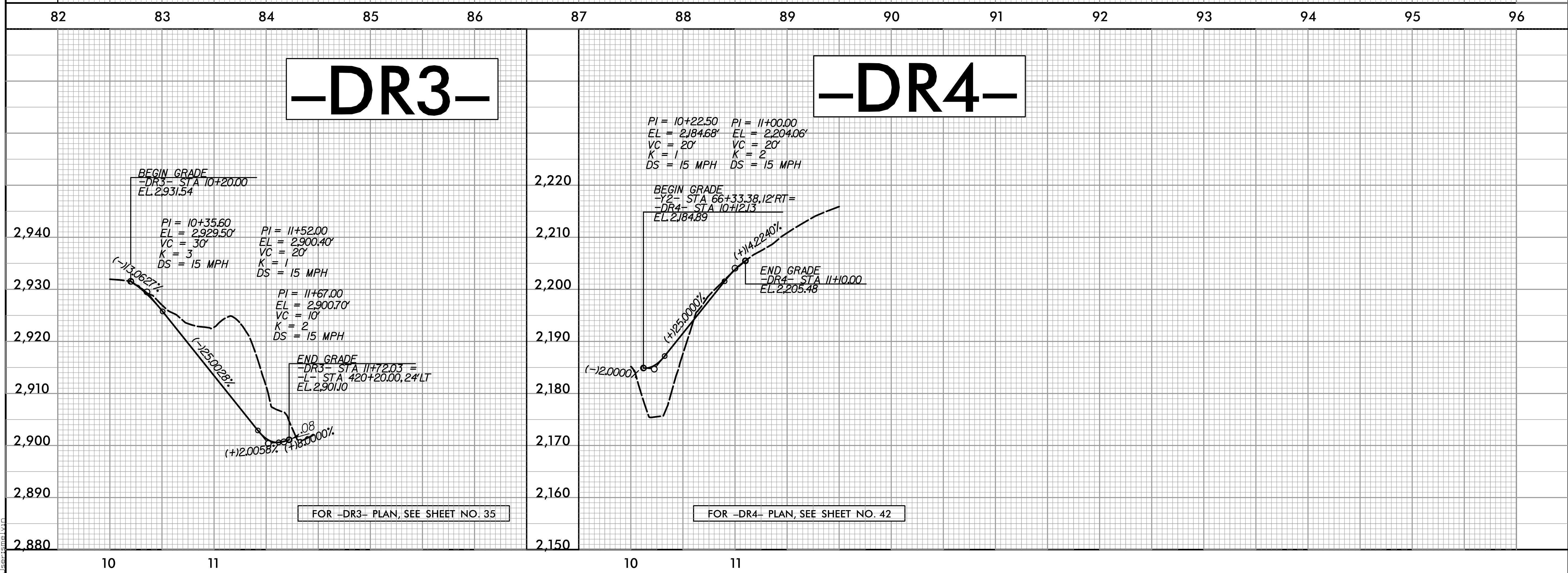
PROJECT REFERENCE NO. A-0009CC	SHEET NO. 74
ROADWAY DESIGN ENGINEER JIMMY L. TERRY 35018 11/18/2022	HYDRAULICS ENGINEER DAVID B. PETT 038697 11/18/2022
DOCUMENT NOT CONSIDERED FINAL UNLESS ALL SIGNATURES COMPLETED	
TGS ENGINEERS 201 W. MARION ST SHELBY, NC 28150 PH (704) 476-0003 CORP. LICENSE NO.: C-0275	



FOR -Y2- PLAN, SEE SHEET NO. 44

-DR3-

-DR4-



FOR -DR3- PLAN, SEE SHEET NO. 35

FOR -DR4- PLAN, SEE SHEET NO. 42

X:\R\2007\A-0009\Roadway\Proj\A-0009CC_Plan_Sheets\A-0009CC_Rdy_pfl_Sheets.dgn