
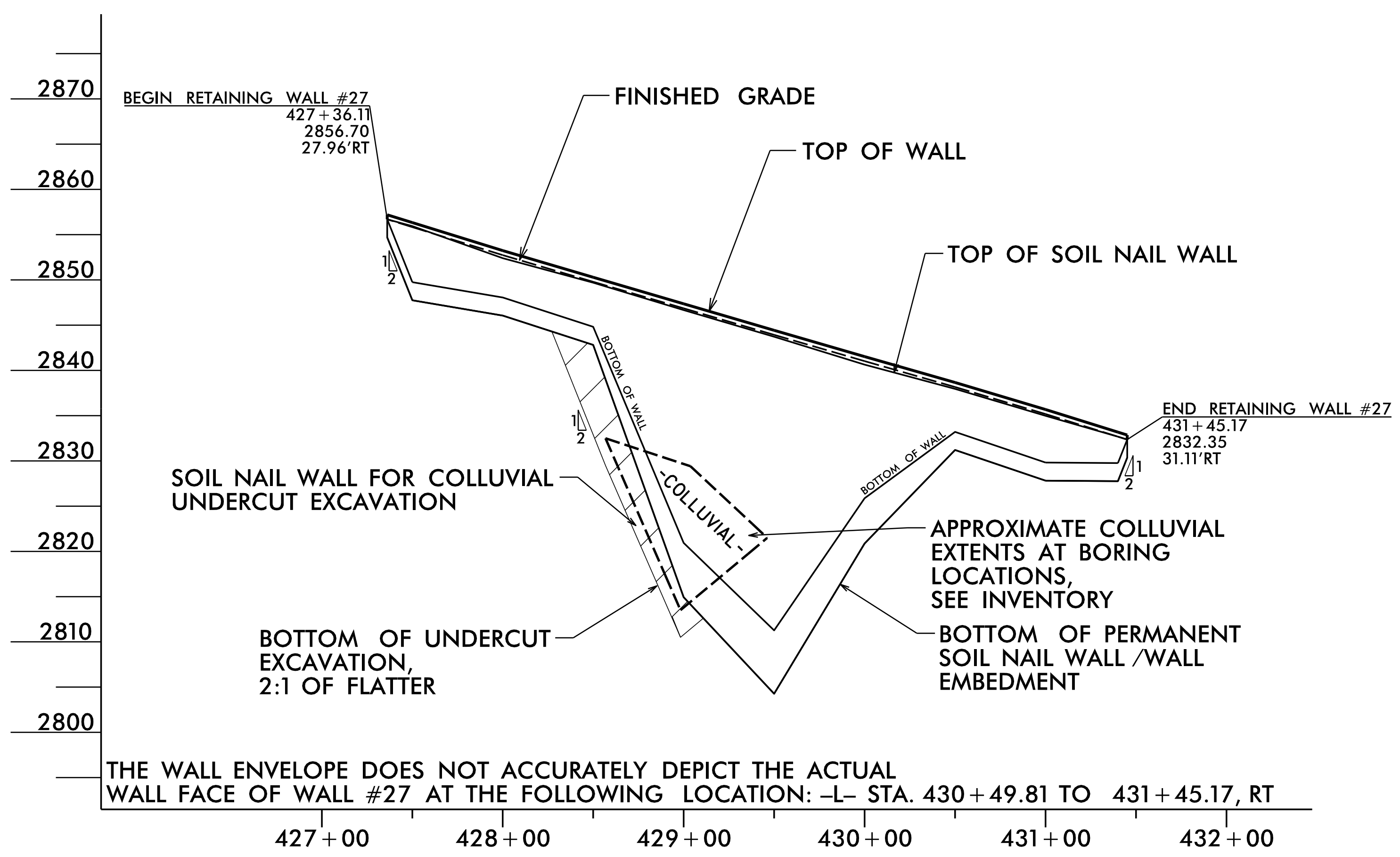


GEOTECHNICAL ENGINEER  SEAL 041986 ENGINEER M. MATTHEW BREWER	ENGINEER _____ SIGNATURE DATE
DocuSigned by: D. Matthew Brewer 08/01/2022 38612625A6C1452 SIGNATURE DATE	
DOCUMENT NOT CONSIDERED FINAL UNLESS ALL SIGNATURES COMPLETED	

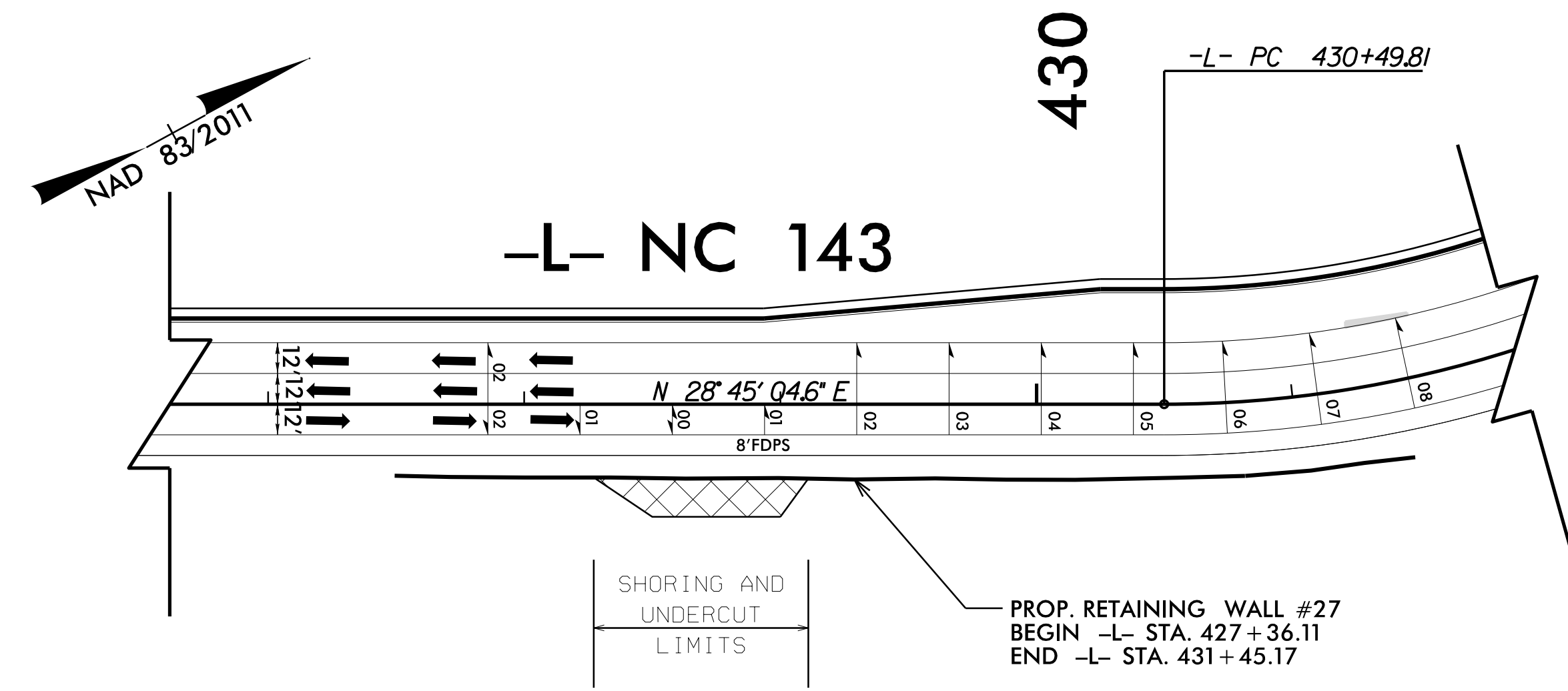


ESTIMATED SOIL NAIL SHORING QUANTITIES			
RETAINING WALL #	SOIL NAIL SHORING (SQUARE FEET)	SOIL NAIL VERIFICATION TESTS	SOIL NAIL PROOF TESTS
27	530	1	2

APPROXIMATE ENVELOPE SHORING FOR UNDERCUT

NOT TO SCALE
(LOOKING AT WALL FACE)

ESTIMATED QUANTITIES	
UNDERCUT EXCAVATION	560 CY
GEOTEXTILE FOR SOIL STABILIZATION	380 SY
SELECT GRANULAR MATERIAL	380 CY
SHOULDER DRAIN	200 LF
CONCRETE PAD FOR SHOULDER DRAIN PIPE OUTLET	3 EA
HORIZONTAL DRAINS (CONTINGENCY)	210 LF



SHORING AND UNDERCUT LIMITS SKETCH

SCALE: 50' = 1"
-L- STA. 428+27.15 TO -L- STA. 429+10.92, RT

PROJECT NO.: A-0009CC
GRAHAM COUNTY
STATION: -L- 427+36, 28' RT TO 431+45, 31' RT
SHEET 6 OF 8

Prepared in the Office of:



CAROLINAS GEOTECHNICAL GROUP
2400 CROWNPOINT EXECUTIVE DRIVE
SUITE 800
CHARLOTTE, NC 28227
(980) 339-8684

REVISIONS						SHEET NO.
NO.	BY	DATE	NO.	BY	DATE	
1			3			W27-6
2			4			

PREPARED BY: M. BREWER	DATE: 7/10/2022
REVIEWED BY: R. KRAL	DATE: 7/10/2022