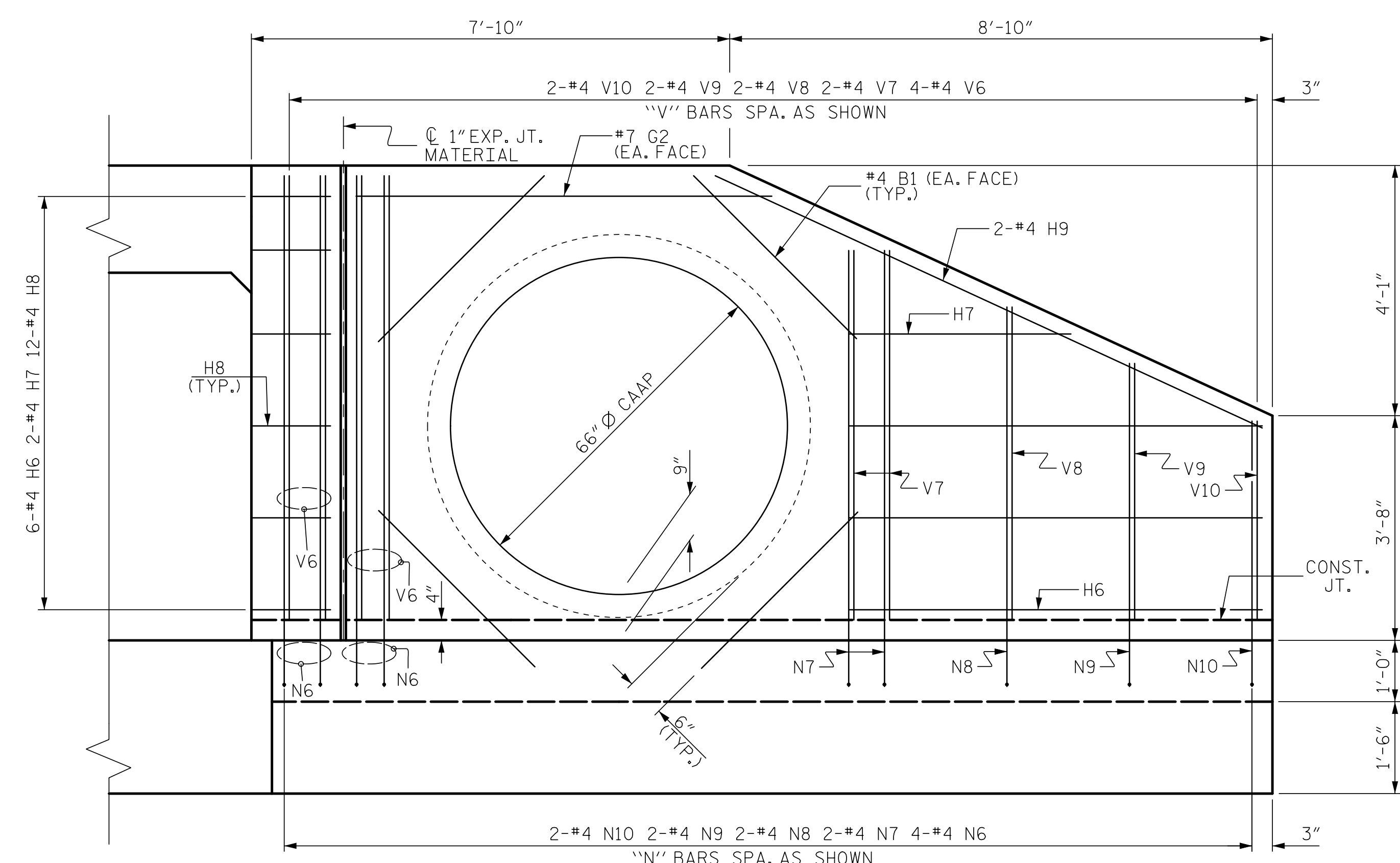
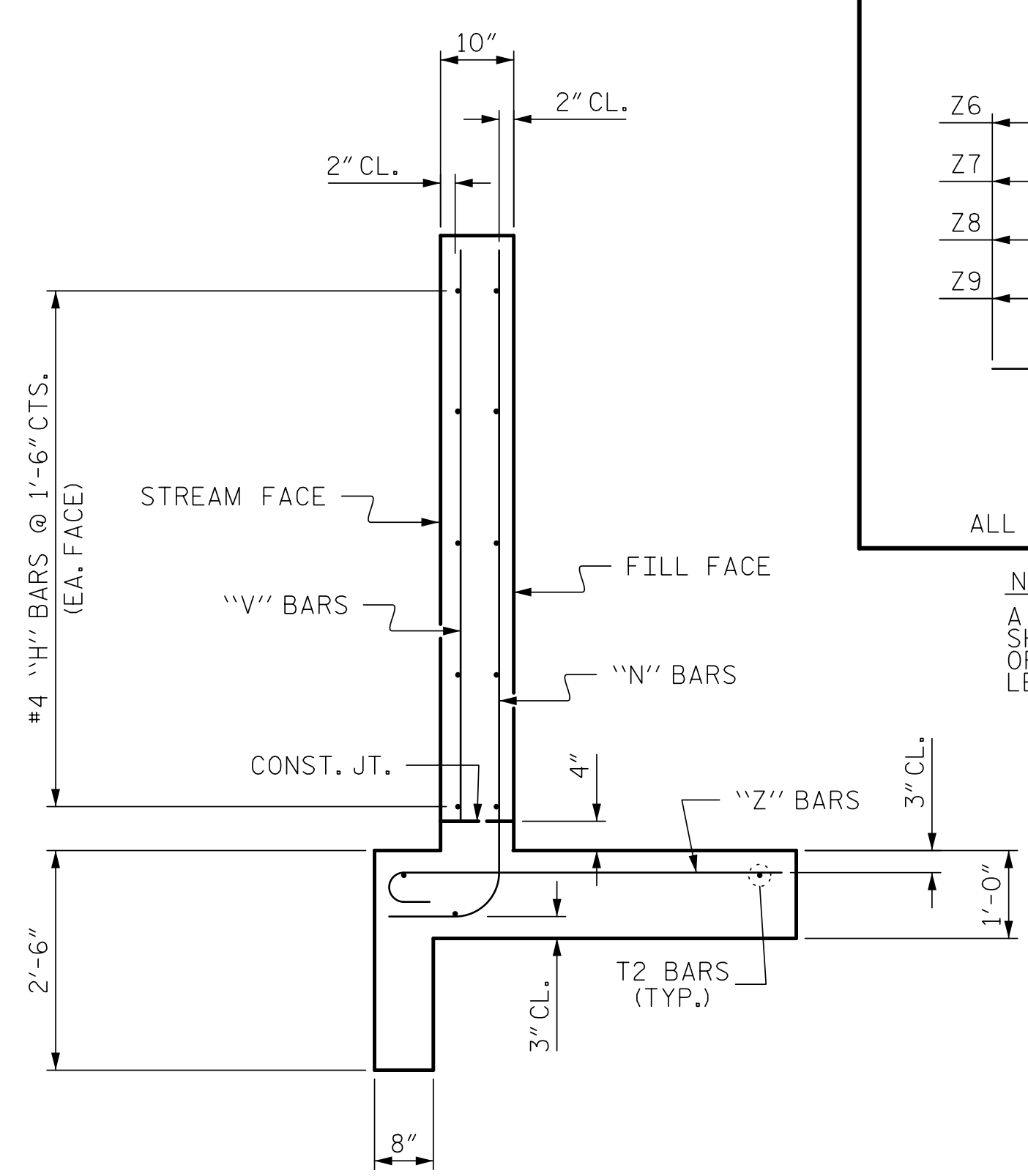


**PLAN**  
66" Ø CAAP NOT SHOWN FOR CLARITY.



**ELEVATION**

DRAWN BY : ZCS DATE : 05/21  
 CHECKED BY : MGC DATE : 09/21  
 DESIGN ENGINEER OF RECORD: ZCS DATE : 06/22



**W2 WING SECTION**

**BAR TYPES**

**NOTE:**  
A 3 FOOT STRIP OF FILTER FABRIC SHALL BE ATTACHED TO THE FILL FACE OF THE WING COVERING THE ENTIRE LENGTH OF THE EXPANSION JOINT.

ALL BAR DIMENSIONS ARE OUT TO OUT.

BILL OF MATERIAL					
BAR	NO.	SIZE	TYPE	LENGTH	WEIGHT
H6	6	#4	STR	6'-9"	27
H7	2	#4	STR	3'-8"	5
H8	12	#4	1	3'-3"	26
H9	2	#4	STR	9'-9"	13
N6	4	#4	2	9'-3"	25
N7	2	#4	2	8'-0"	11
N8	2	#4	2	7'-1"	9
N9	2	#4	2	6'-2"	8
N10	2	#4	2	5'-3"	7
T2	3	#5	STR	16'-8"	52
V6	4	#4	STR	7'-3"	19
V7	2	#4	STR	6'-0"	8
V8	2	#4	STR	5'-1"	7
V9	2	#4	STR	4'-2"	6
V10	2	#4	STR	3'-3"	4
Z6	2	#4	3	4'-10"	6
Z7	4	#4	3	4'-5"	12
Z8	6	#4	3	3'-8"	15
Z9	6	#4	3	2'-11"	12
G2	2	#7	STR	6'-10"	28
B1	8	#4	STR	3'-9"	20
REINFORCING STEEL FOR WING W2				320	LBS
CLASS A CONCRETE WING W2				6.5	CY

PROJECT NO. A-0009CC  
GRAHAM COUNTY  
 STATION: 66+85.00 -Y2-  
 SHEET 7 OF 7

STATE OF NORTH CAROLINA  
 DEPARTMENT OF TRANSPORTATION  
 RALEIGH

**WING W2  
 W/66" CAAP  
 FOR  
 CONCRETE BOX CULVERT**

7/13/2022

DOCUMENT NOT CONSIDERED FINAL UNLESS ALL SIGNATURES COMPLETED

TGS ENGINEERS  
 706 HILLSBOROUGH STREET  
 SUITE 200  
 RALEIGH, NC 27603  
 PH (919) 773-8887  
 CORP. LICENSE NO.: C-0275

REVISIONS						SHEET NO.
NO.	BY:	DATE:	NO.	BY:	DATE:	C1-7
1			3			TOTAL SHEETS
2			4			7