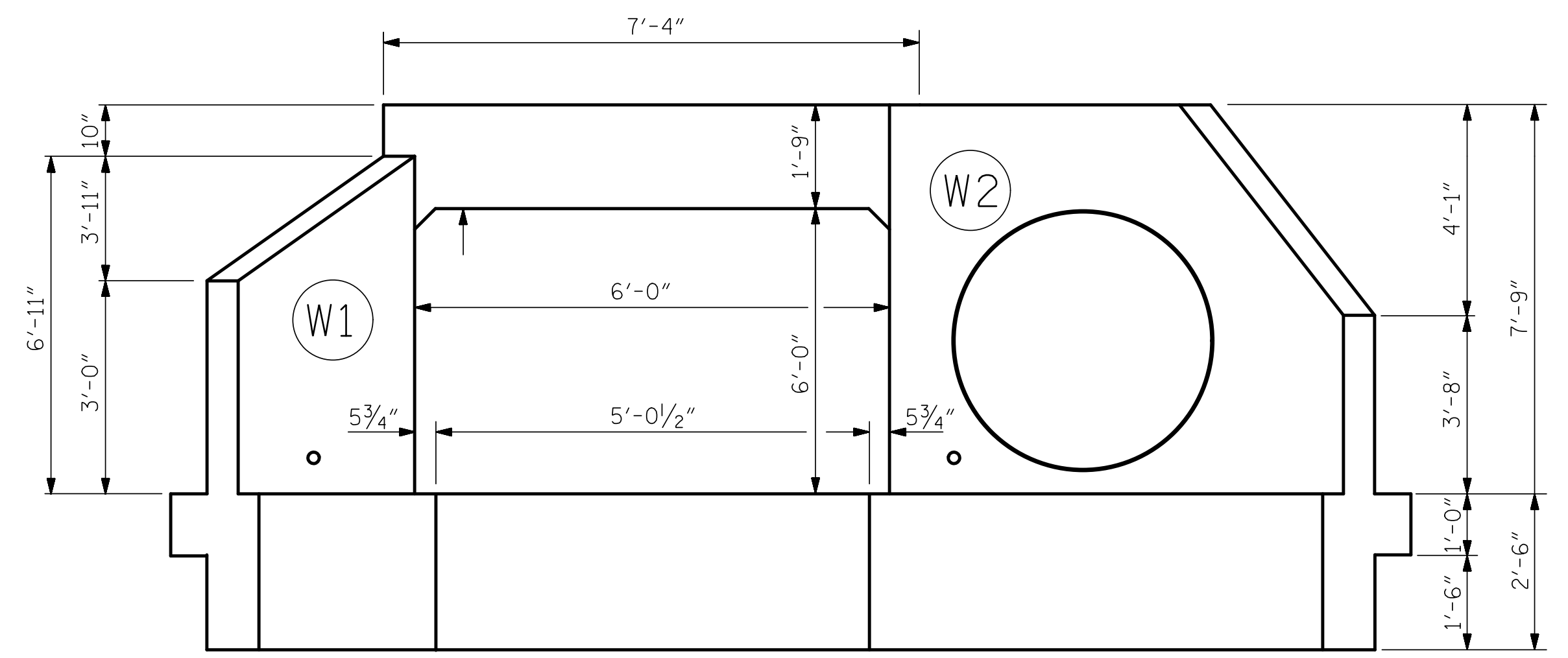
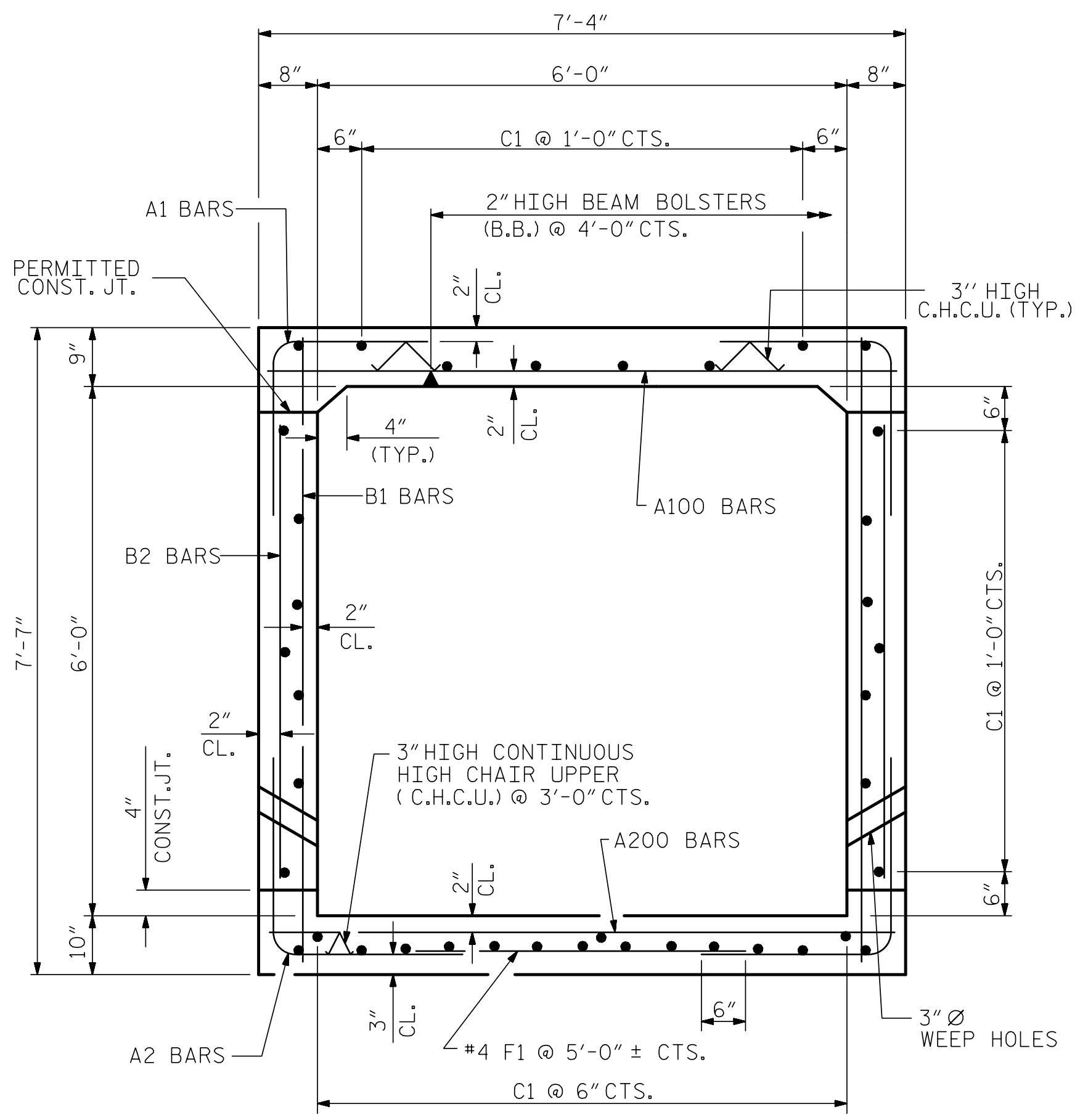


**CULVERT EXTENSION SECTION NORMAL TO ROADWAY**

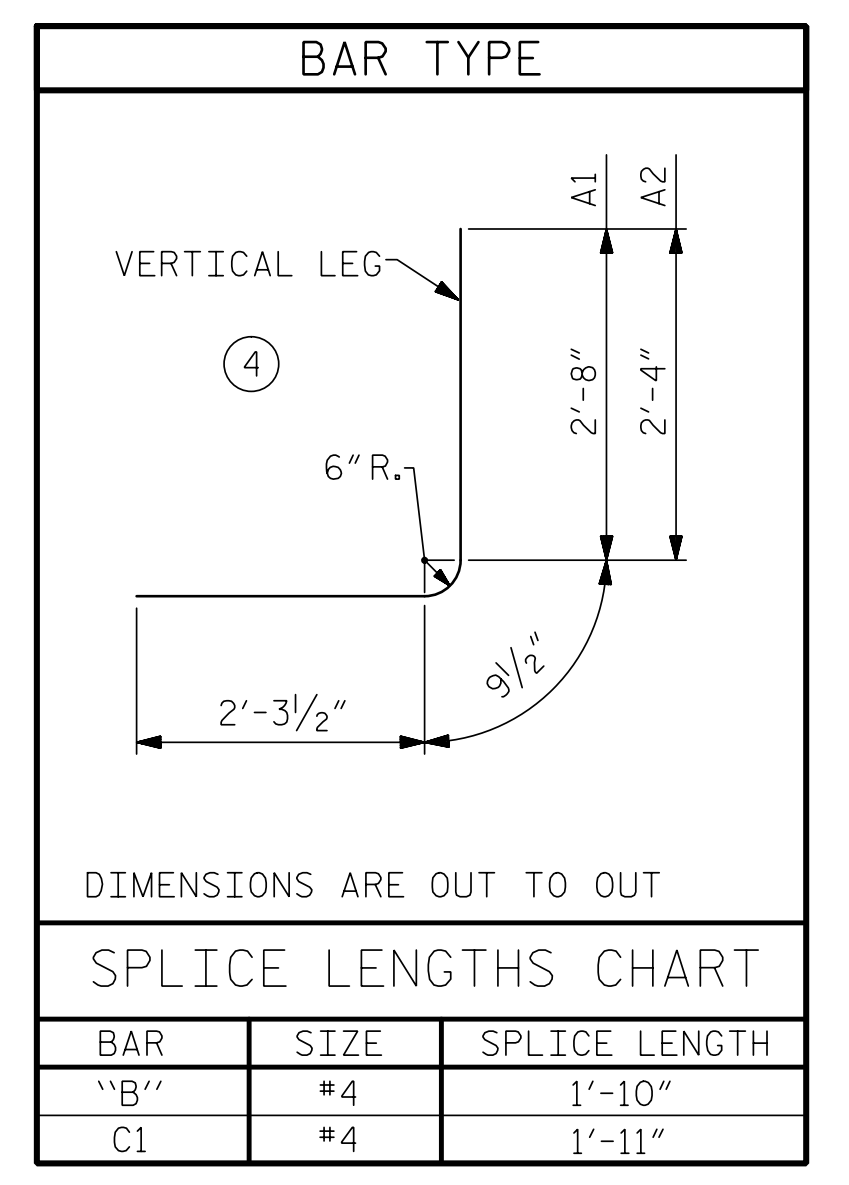


**OUTLET END ELEVATION**



**RIGHT ANGLE SECTION OF BARREL**  
THERE ARE 38 "C" BARS IN SECTION OF BARREL

BAR SCHEDULE						
BAR	NO.	SIZE	TYPE	LENGTH	WEIGHT	
A1	130	#5	4	5'-9"	780	
A2	130	#5	4	5'-5"	734	
A100	78	#6	STR	6'-11"	810	
A101	2	#6	STR	5'-6"	17	
A102	3	#6	STR	2'-6"	11	
A200	78	#6	STR	6'-11"	810	
A201	2	#6	STR	5'-6"	17	
A202	3	#6	STR	2'-6"	11	
F1	13	#4	STR	2'-6"	22	
B1	121	#4	STR	7'-2"	579	
B2	130	#4	STR	5'-4"	463	
C1	76	#4	STR	31'-11"	1620	
D1	18	#6	STR	2'-6"	68	
G1	2	#4	STR	6'-11"	9	
S2	6	#8	STR	7'-2"	115	
REINFORCING STEEL					6,066	LBS



PROJECT NO. A-0009CC  
GRAHAM COUNTY  
 STATION: 66+85.00 -Y2-

SHEET 3 OF 7

7/13/2022

DOCUMENT NOT CONSIDERED FINAL UNLESS ALL SIGNATURES COMPLETED

TGS ENGINEERS  
 706 HILLSBOROUGH STREET  
 SUITE 200  
 RALEIGH, NC 27603  
 PH (919) 773-8887  
 CORP. LICENSE NO.: C-0275

STATE OF NORTH CAROLINA  
 DEPARTMENT OF TRANSPORTATION  
 RALEIGH

**SINGLE 6 FT. X 6 FT. CONCRETE BOX CULVERT EXTENSION**  
**63°-54'-03" SKEW**

REVISIONS						SHEET NO.
NO.	BY:	DATE:	NO.	BY:	DATE:	C1-3
1			3			TOTAL SHEETS
2			4			7

STR. #1

DRAWN BY : ZCS DATE : 05/21  
 CHECKED BY : MGC DATE : 09/21  
 DESIGN ENGINEER OF RECORD: ZCS DATE : 6/22