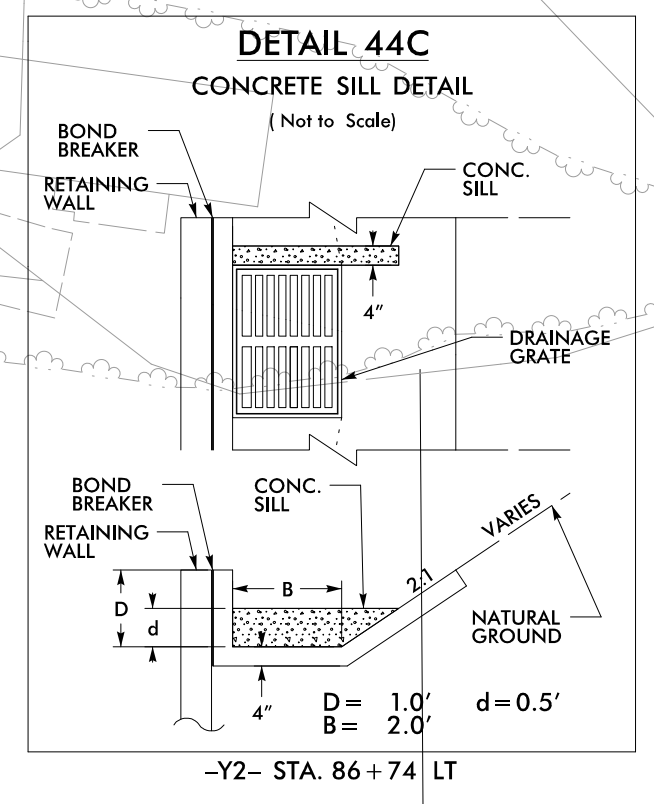
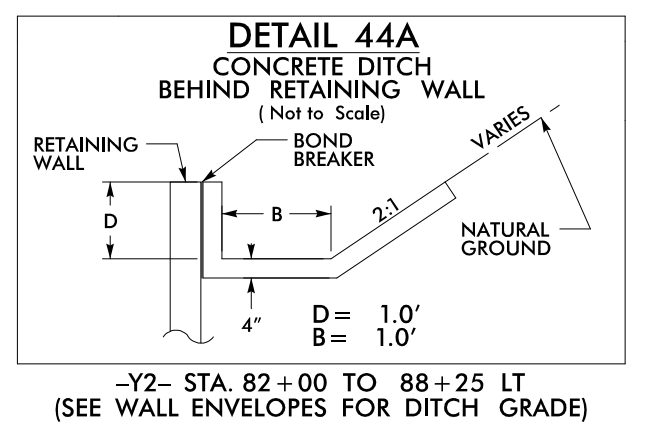


For Slopes Excavated Greater Than 10 feet
Install Matting for Erosion Control on
Entire Slope as Work Allows.

IN LIEU OF ROCK INLET SEDIMENT TRAP TYPE C,
UTILIZE FABRIC INSERT INLET PROTECTION
DEVICES IN AREAS WHERE WATER MAY
POND ON ROAD OPEN TO LIVE TRAFFIC.

MINIMIZE CLEARING
AND GRUBBING
SAFETY FENCE



| | |
|---|-----------------------------|
| PROJECT REFERENCE NO. A-0009CC | SHEET NO. EC-23/CONST.44 |
| RW SHEET NO. | |
| ROADWAY DESIGN ENGINEER | HYDRAULICS ENGINEER |
| TGS ENGINEERS 201 W. MARION ST. STE 200 SHELBY, NC 28150 PH (704) 476-0003 CORP. LICENSE NO.: C-0275 | |

NAD 83/2011

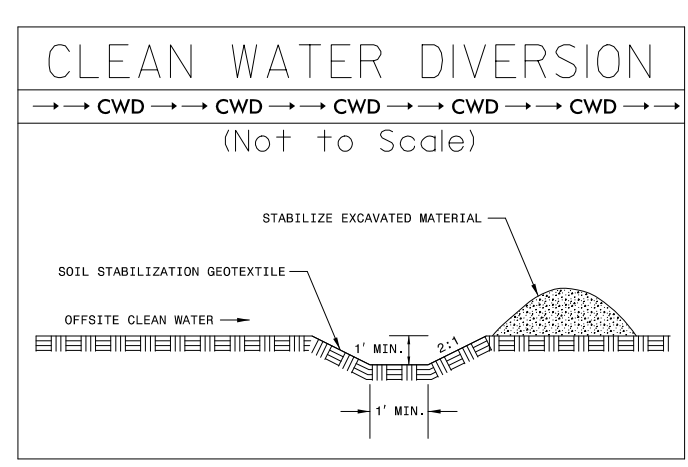
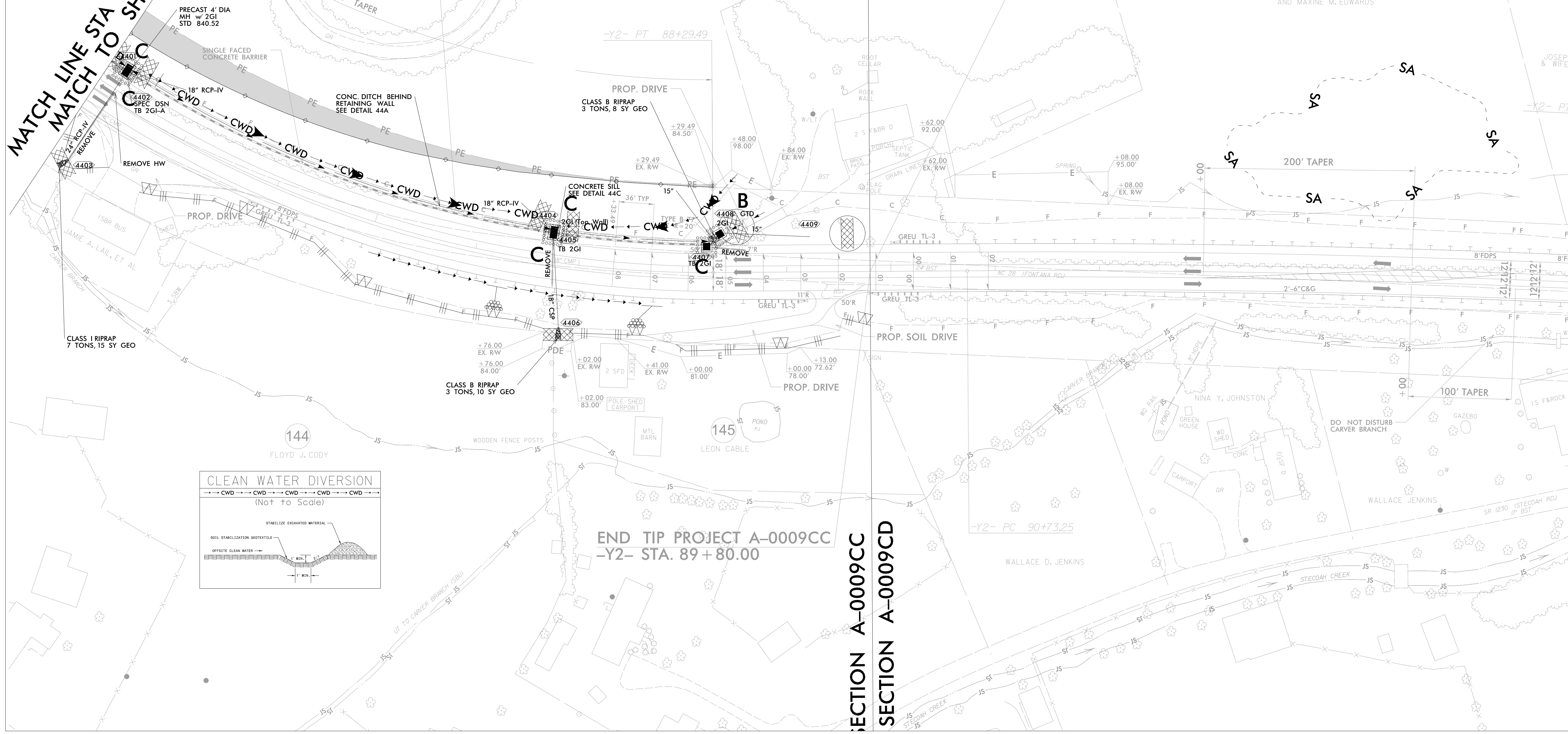
MATCH LINE STA -Y2- 82+00.00
MATCH TO SHEET NO. 43

PROP. RETAINING WALL #35
W/CONCRETE DITCH
BEGIN -Y2- STA. 77+94±
END -Y2- STA. 88+25±

139
THOMAS E. SCHIESSLE

BEGIN TIP PROJECT A-0009CD
-Y2- STA. 89+80.00

143
PATRICIA LYNN EDWARDS
JOHN CRAIG EDWARDS
AND MAXINE M. EDWARDS



END TIP PROJECT A-0009CC
-Y2- STA. 89+80.00

SECTION A-0009CC
SECTION A-0009CD