
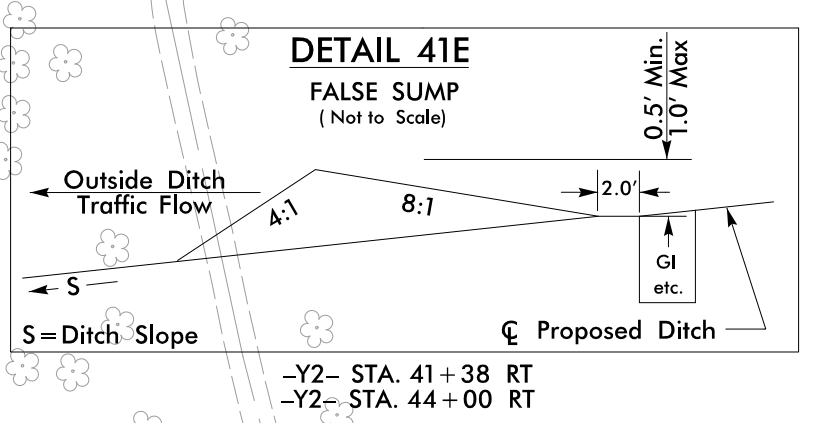
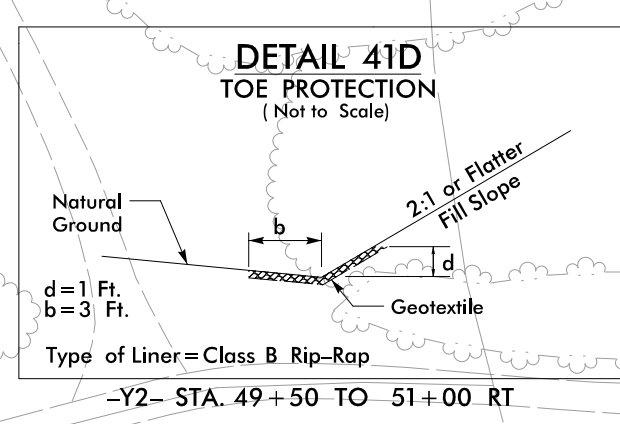
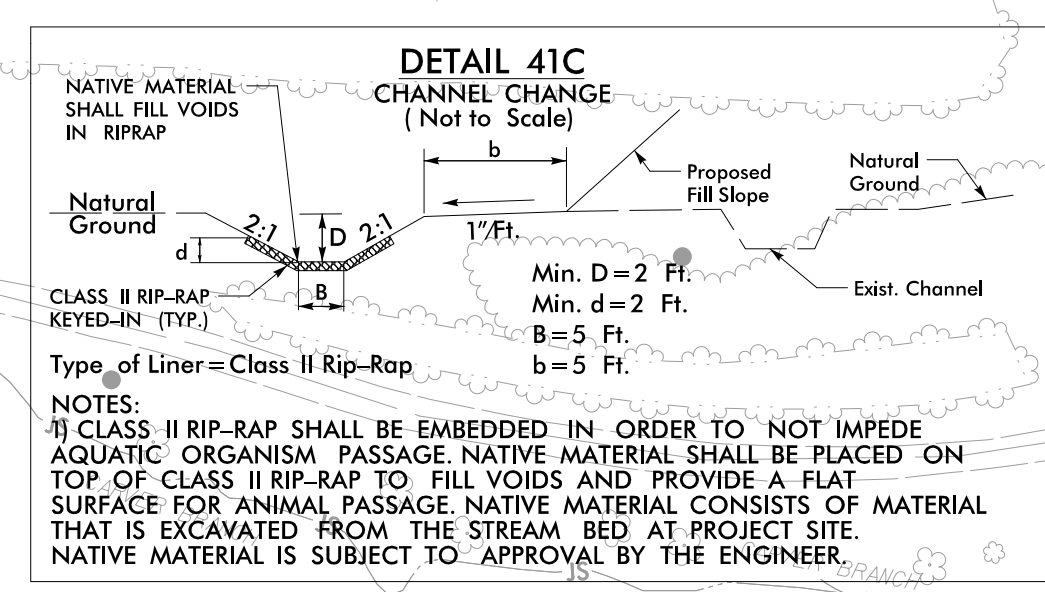
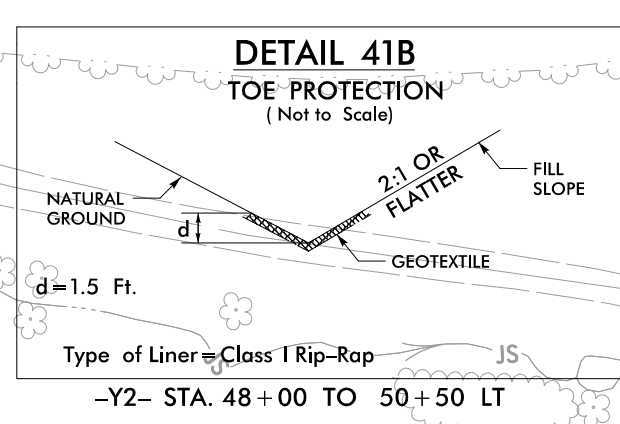
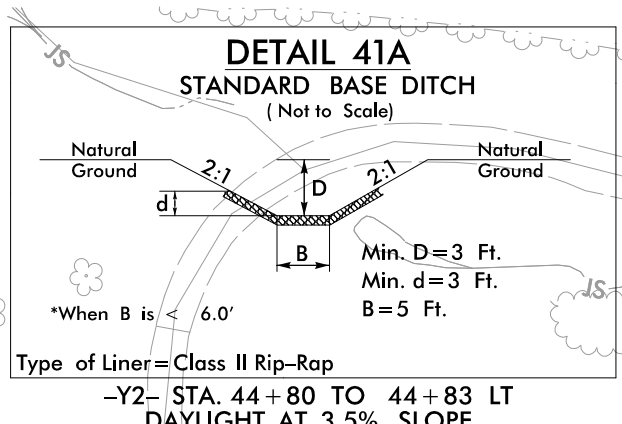
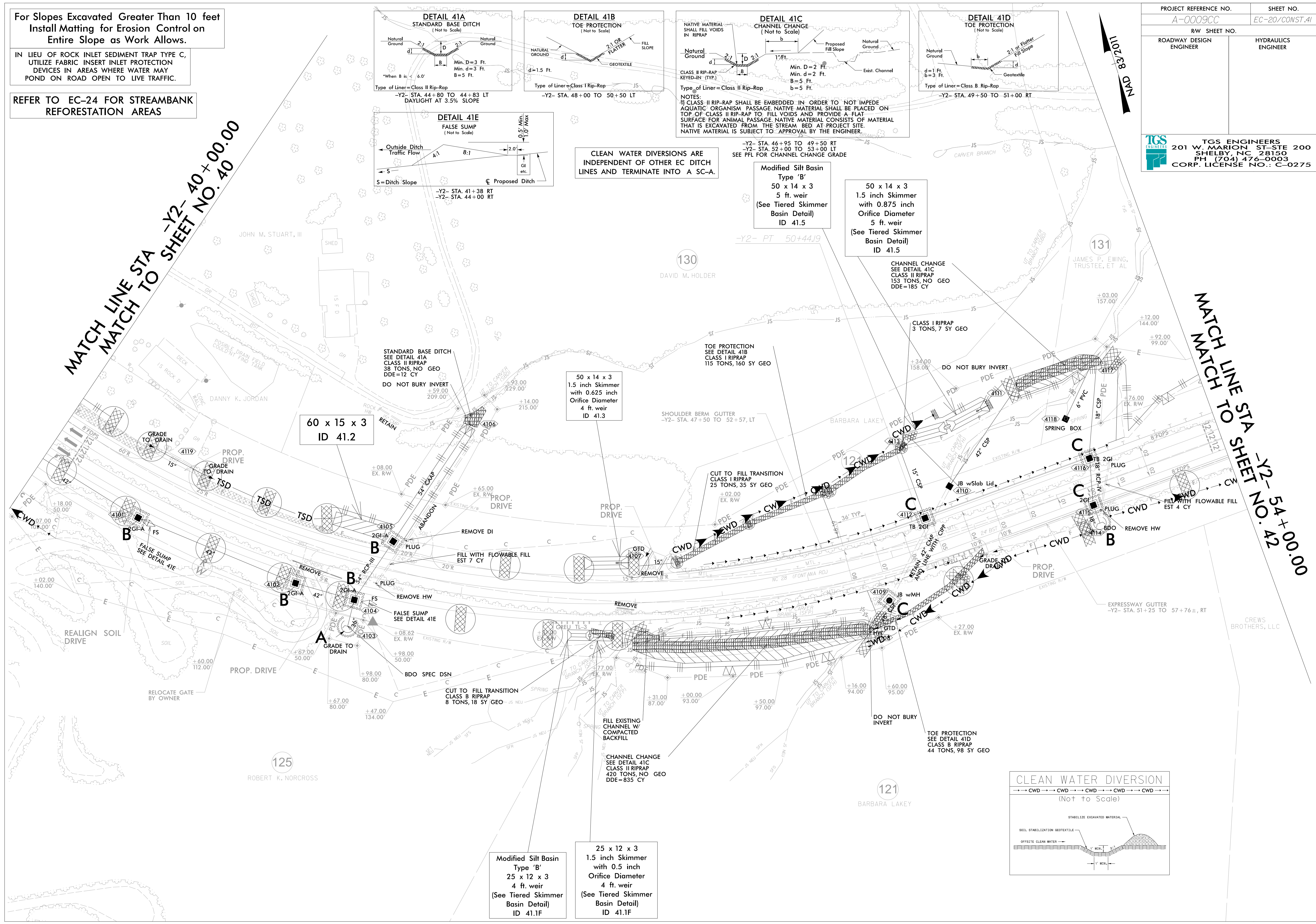


For Slopes Excavated Greater Than 10 feet  
Install Matting for Erosion Control on  
Entire Slope as Work Allows.

IN LIEU OF ROCK INLET SEDIMENT TRAP TYPE C,  
UTILIZE FABRIC INSERT INLET PROTECTION  
DEVICES IN AREAS WHERE WATER MAY  
POND ON ROAD OPEN TO LIVE TRAFFIC.

REFER TO EC-24 FOR STREAMBANK  
REFORESTATION AREAS

|  |                     |
|--|---------------------|
| PROJECT REFERENCE NO.  | SHEET NO.           |
| A-0009CC   | EC-20/CONST.41      |
| RW SHEET NO.   |                     |
| ROADWAY DESIGN ENGINEER  | HYDRAULICS ENGINEER |
|  <b>TGS ENGINEERS</b><br>201 W. MARION ST-STE 200<br>SHELBY, NC 28150<br>PH (704) 476-0003<br>CORP. LICENSE NO.: C-0275 |                     |



CLEAN WATER DIVERSIONS ARE  
INDEPENDENT OF OTHER EC DITCH  
LINES AND TERMINATE INTO A SC-A.

Modified Silt Basin  
Type 'B'  
50 x 14 x 3  
5 ft. weir  
(See Tiered Skimmer  
Basin Detail)  
ID 41.5

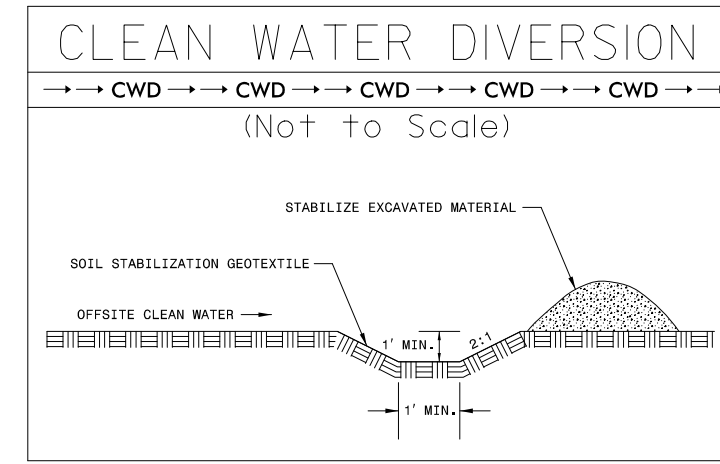
50 x 14 x 3  
1.5 inch Skimmer  
with 0.875 inch  
Orifice Diameter  
5 ft. weir  
(See Tiered Skimmer  
Basin Detail)  
ID 41.5

60 x 15 x 3  
ID 41.2

50 x 14 x 3  
1.5 inch Skimmer  
with 0.625 inch  
Orifice Diameter  
4 ft. weir  
ID 41.3

Modified Silt Basin  
Type 'B'  
25 x 12 x 3  
4 ft. weir  
(See Tiered Skimmer  
Basin Detail)  
ID 41.1F

25 x 12 x 3  
1.5 inch Skimmer  
with 0.5 inch  
Orifice Diameter  
4 ft. weir  
(See Tiered Skimmer  
Basin Detail)  
ID 41.1F



MATCH LINE STA  
MATCH TO SHEET NO. 40+00.00

MATCH LINE TO  
MATCH TO SHEET NO. 54+00.00