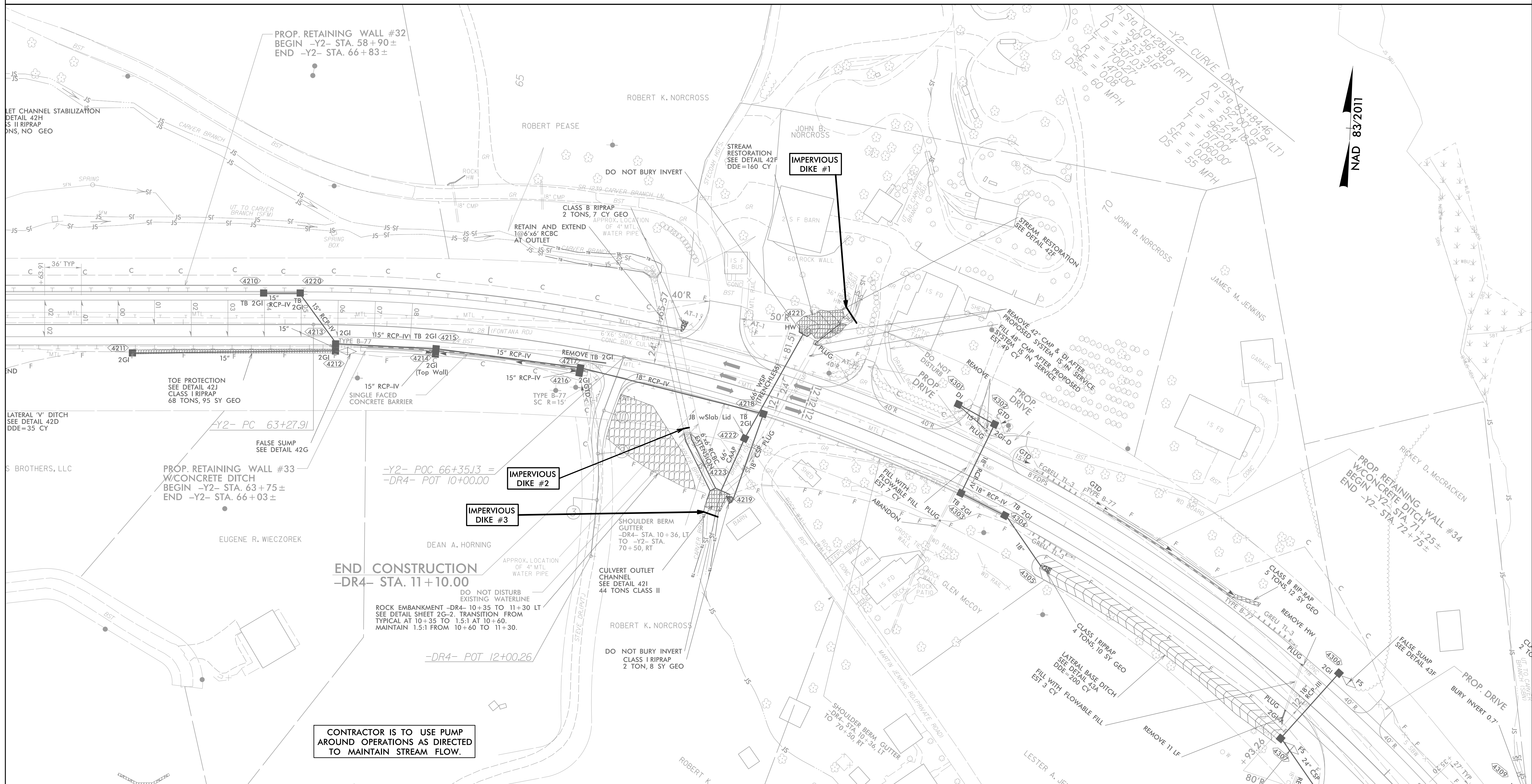


# CULVERT CONSTRUCTION SEQUENCE STA. 66+85 -Y2- & PIPE CONSTRUCTION SEQUENCE STA. 67+82 -Y2-

PROJECT REFERENCE NO.	SHEET NO.
A-0009CC	EC-IIA/CONST.42
RW SHEET NO.	
ROADWAY DESIGN ENGINEER	HYDRAULICS ENGINEER

1. INSTALL 66" WSP VIA TRENCHLESS INSTALLION FROM DRAINAGE ITEM #4221 TO #4224.
2. INSTALL IMPERVIOUS DIKES #1, #2, & #3 AND BEGIN PUMP AROUND.
3. DEWATER WORK SITE AS NEEDED INTO SPECIAL STILLING BASIN(S).
4. INSTALL 6' X 6' RCBC EXTENSION.
5. INSTALL 66" CAAP FROM DRAINAGE ITEM #4224 TO #4222.
6. COMPLETE ANY NECESSARY INLET/OUTLET CHANNEL IMPROVEMENTS.
7. REMOVE IMPERVIOUS DIKES #1, #2, & #3.

8. REESTABLISH STREAM ACCORDING TO CONST. PLANS.
9. PLUG AND FILL EXISTING 48" CMP.



CONTRACTOR IS TO USE PUMP AROUND OPERATIONS AS DIRECTED TO MAINTAIN STREAM FLOW.