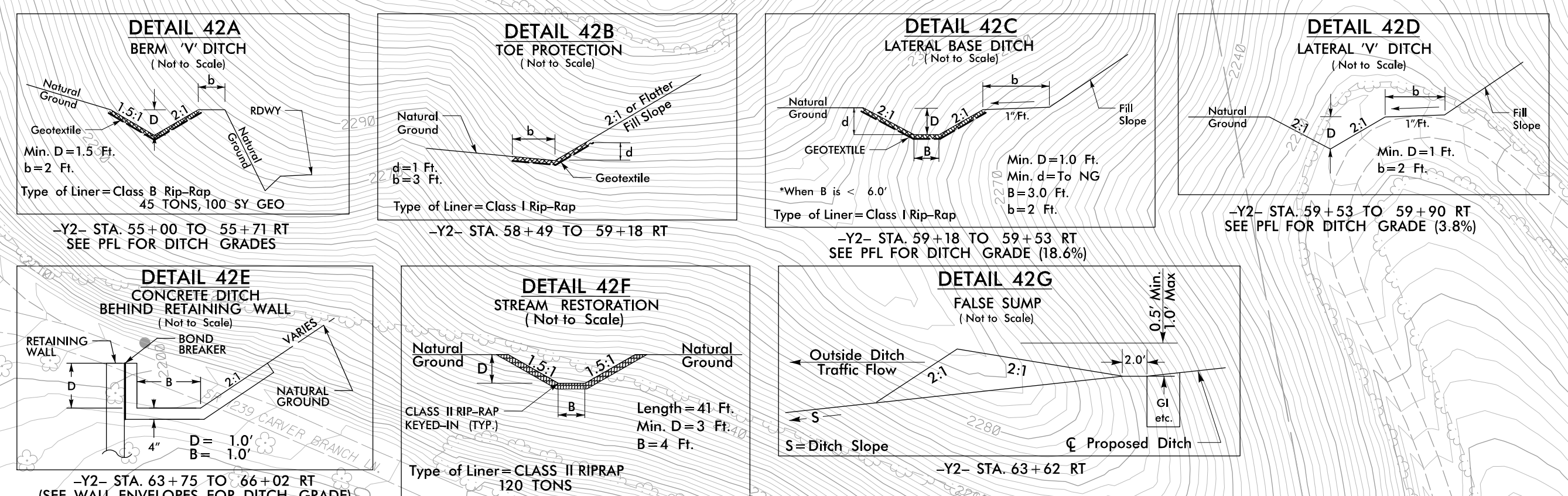


PROJECT REFERENCE NO. A-0009CC		SHEET NO. EC-II/CONST.42	
ROADWAY DESIGN ENGINEER		HYDRAULICS ENGINEER	
<p>TGS ENGINEERS 201 W. MARION ST. STE 200 SHELBY, NC 28150 PH (704) 476-0003 CORP. LICENSE NO.: C-0275</p>			

**Y2- CURVE DATA**  
 PI Sta 70+28.18  
 $\Delta = 50^\circ 56' 38.0"$  (RT)  
 $D = 3' 53' 51.6"$   
 $L = 1307.03'$   
 $T = 700.27'$   
 $R = 1470.00'$   
 $SE = 0.08$   
 $DS = 60$  MPH

**-DR4- CURVE DATA**  
 PI Sta 10+77.95  
 $\Delta = 24^\circ 42' 06.2"$  (LT)  
 $D = 57' 17' 44.8"$   
 $L = 431'$   
 $T = 21.90'$   
 $R = 100.00'$

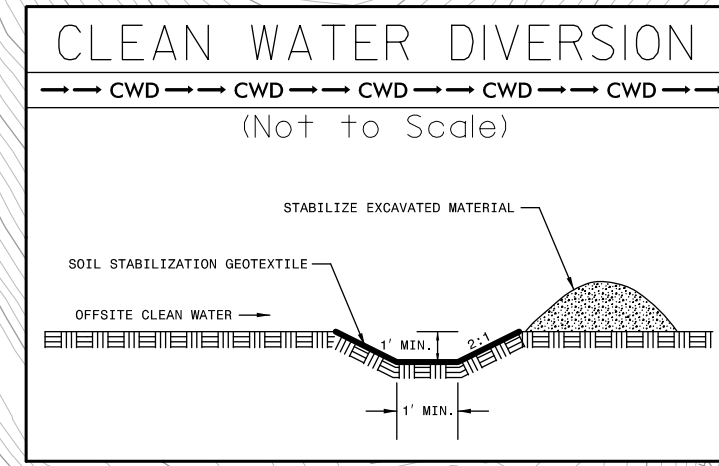
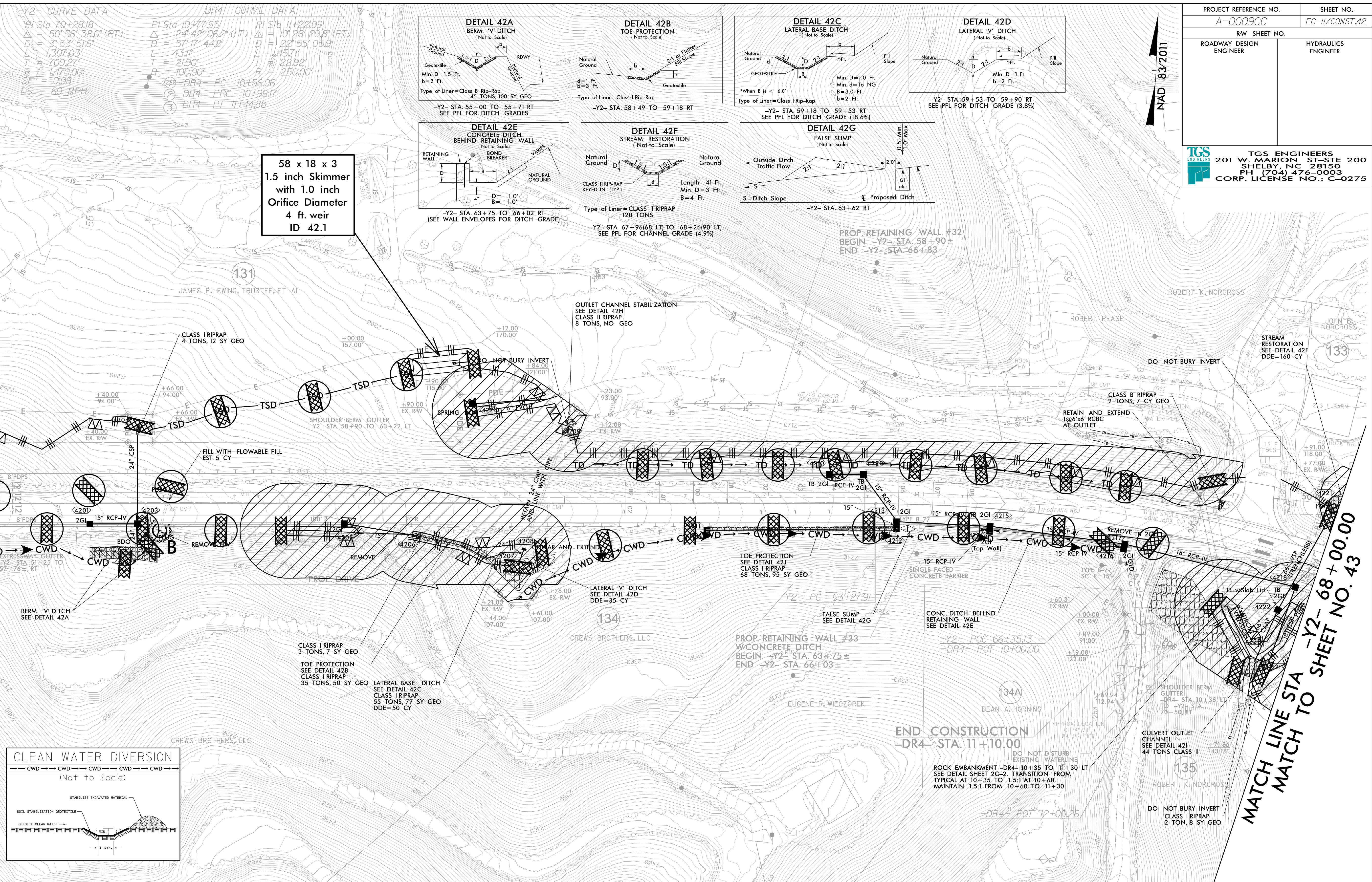
① DR4-PC 10+56.06  
 ② DR4-PRC 10+199.17  
 ③ DR4-PT 11+44.88



58 x 18 x 3  
 1.5 inch Skimmer  
 with 1.0 inch  
 Orifice Diameter  
 4 ft. weir  
 ID 42.1

MATCH LINE STA -Y2- 54+00.00  
MATCH TO SHEET NO. 41

MATCH LINE STA -Y2- 68+00.00  
MATCH TO SHEET NO. 43



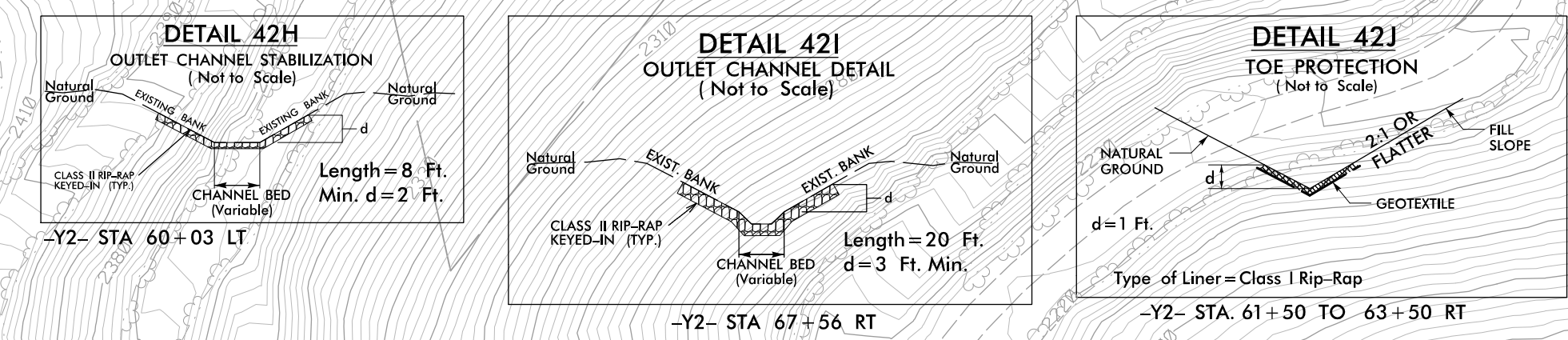
**CLEARING AND GRUBBING EROSION CONTROL FOR CONSTRUCTION SHEET 42**

NOTE:  
 PLACE TEMPORARY ROCK SEDIMENT DAMS TYPE - B AND TEMPORARY ROCK SILT CHECKS TYPE - A AT DRAINAGE OUTLETS.

**ENVIRONMENTALLY SENSITIVE AREA**  
 SEE PROJECT SPECIAL PROVISIONS

**CLEAN WATER DIVERSIONS ARE INDEPENDENT OF OTHER EC DITCH LINES AND TERMINATE INTO A SC-A.**

INSTALL PIPE(S) IN JURISDICTIONAL AREAS WITHOUT IMPACTING STREAM UNTIL AREA STABILIZED AND ACCORDING TO NCDOT BEST MANAGEMENT PRACTICES FOR CONSTRUCTION AND MAINTENANCE ACTIVITIES MANUAL.



**END CONSTRUCTION**  
 -DR4- STA. 11+10.00

ROCK EMBANKMENT -DR4- 10+35 TO 11+30 LT  
 SEE DETAIL SHEET 2G-7. TRANSITION FROM TYPICAL AT 10+35 TO 1.5:1 AT 10+60. MAINTAIN 1.5:1 FROM 10+60 TO 11+30.