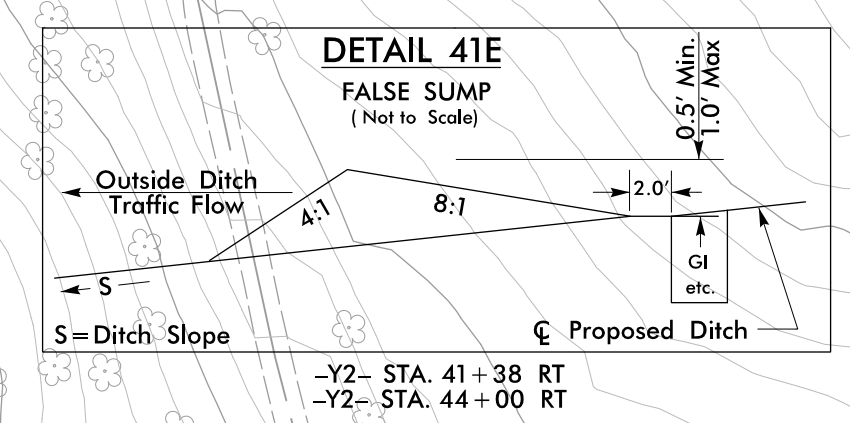
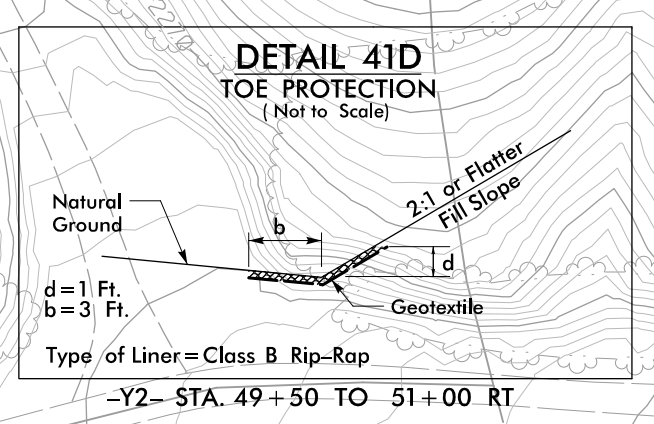
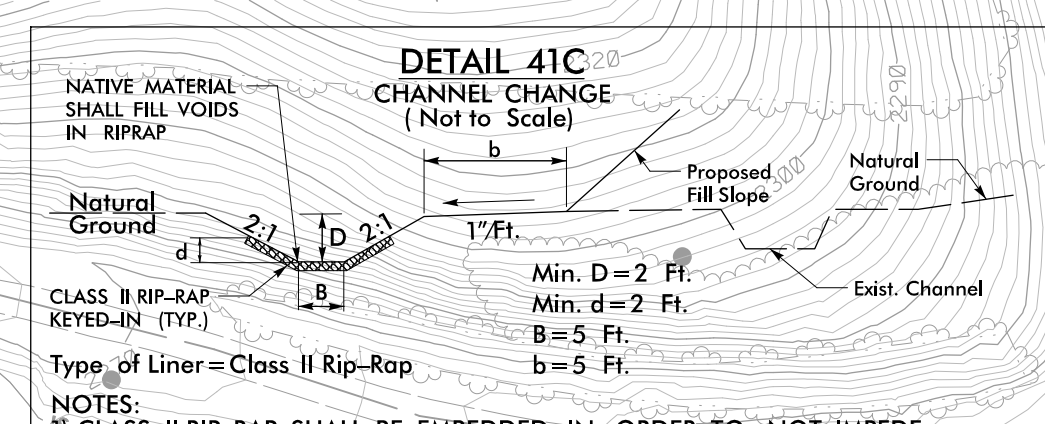
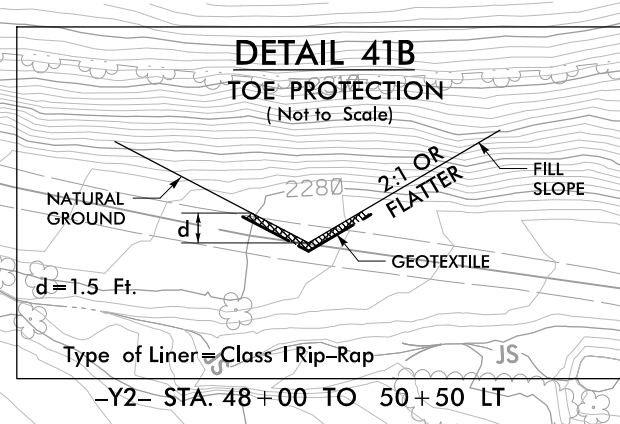
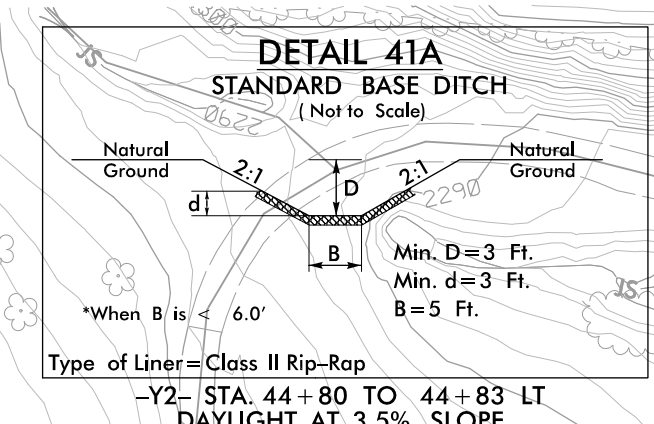


INSTALL PIPE(S) IN JURISDICTIONAL AREAS WITHOUT IMPACTING STREAM UNTIL AREA STABILIZED AND ACCORDING TO NCDOT BEST MANAGEMENT PRACTICES FOR CONSTRUCTION AND MAINTENANCE ACTIVITIES MANUAL.

 ENVIRONMENTALLY SENSITIVE AREA SEE PROJECT SPECIAL PROVISIONS

NOTE:
PLACE TEMPORARY ROCK SEDIMENT DAMS TYPE - B AND TEMPORARY ROCK SILT CHECKS TYPE - A AT DRAINAGE OUTLETS.

CLEARING AND GRUBBING EROSION CONTROL FOR CONSTRUCTION SHEET 41



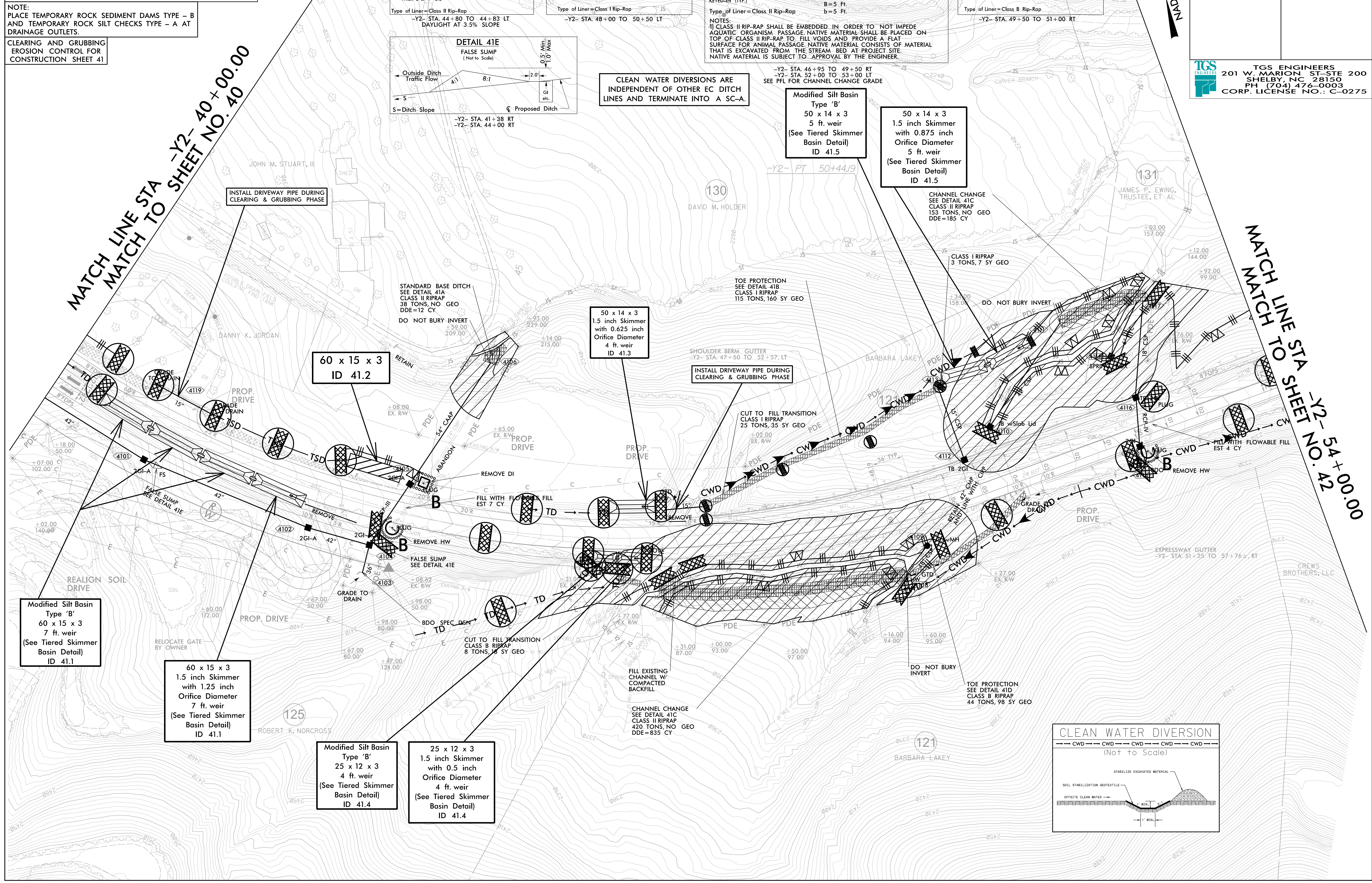
CLEAN WATER DIVERSIONS ARE INDEPENDENT OF OTHER EC DITCH LINES AND TERMINATE INTO A SC-A.


Modified Silt Basin Type 'B' 50 x 14 x 3 5 ft. weir (See Tiered Skimmer Basin Detail) ID 41.5

50 x 14 x 3 1.5 inch Skimmer with 0.875 inch Orifice Diameter 5 ft. weir (See Tiered Skimmer Basin Detail) ID 41.5

MATCH LINE STA -Y2- 40+00.00
MATCH TO SHEET NO. 40

MATCH LINE TO SHEET -Y2- 54+00.00
MATCH TO SHEET NO. 42



PROJECT REFERENCE NO.	SHEET NO.
A-0009CC	EC-10/CONST.41
RW SHEET NO.	
ROADWAY DESIGN ENGINEER	HYDRAULICS ENGINEER
 TGS ENGINEERS 201 W. MARION ST. STE 200 SHELBY, NC 28150 PH (704) 476-0003 CORP. LICENSE NO.: C-0275	

