
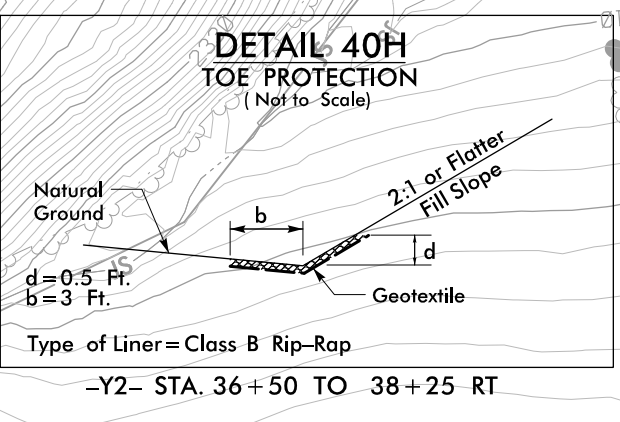
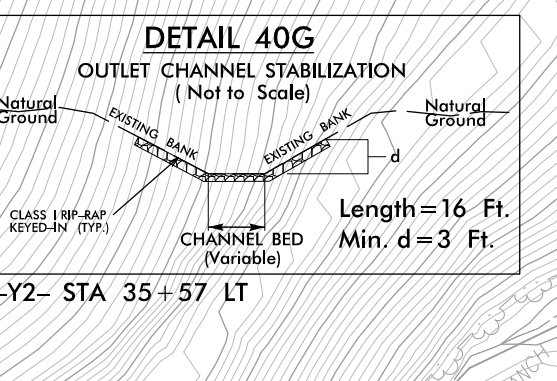
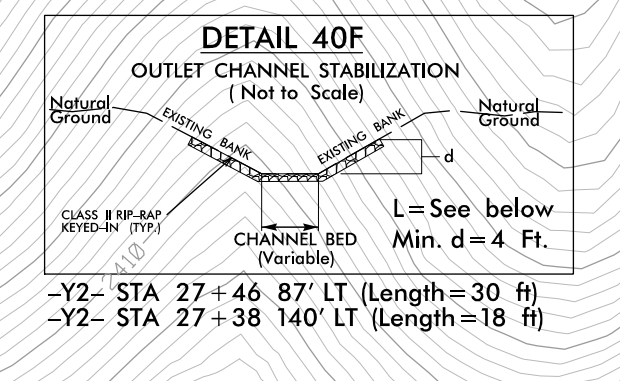
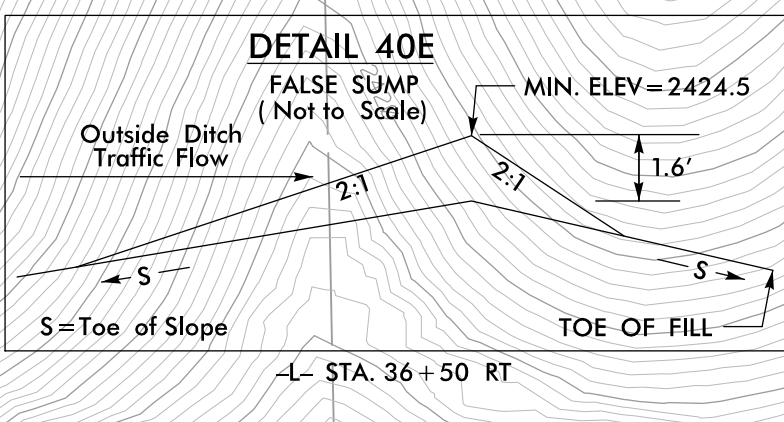
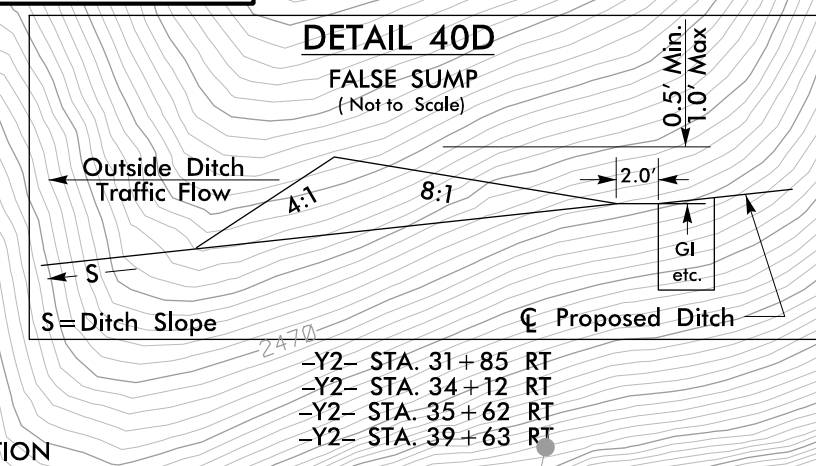
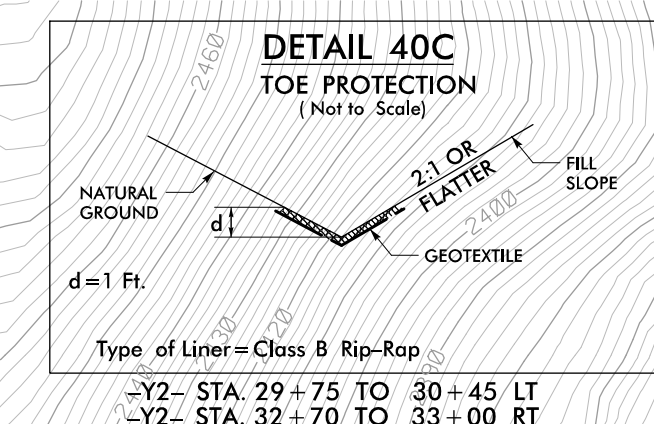
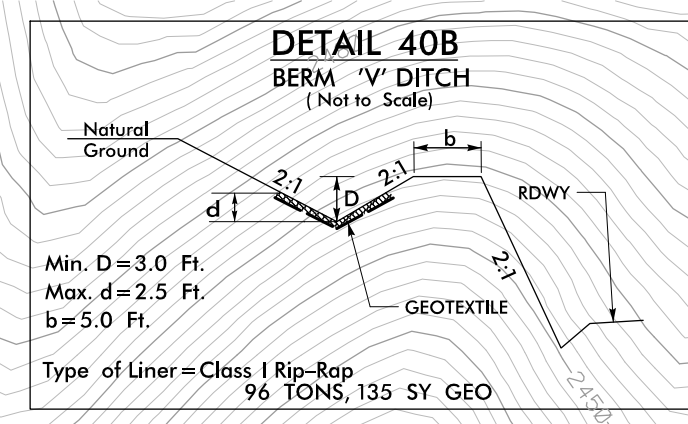
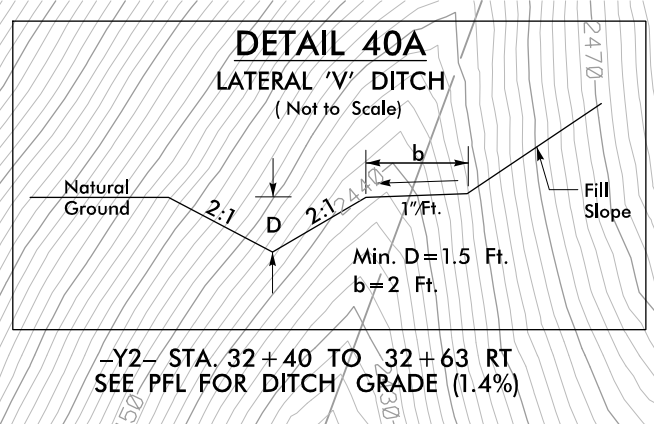


PROJECT REFERENCE NO. A-0009CC	SHEET NO. EC-09/CONST.40
RW SHEET NO.	
ROADWAY DESIGN ENGINEER	HYDRAULICS ENGINEER
 TGS ENGINEERS 201 W. MARION ST-STE 200 SHELBY, NC 28150 PH (704) 476-0003 CORP. LICENSE NO.: C-0275	

CLEAN WATER DIVERSIONS ARE INDEPENDENT OF OTHER EC DITCH LINES AND TERMINATE INTO A SC-A.

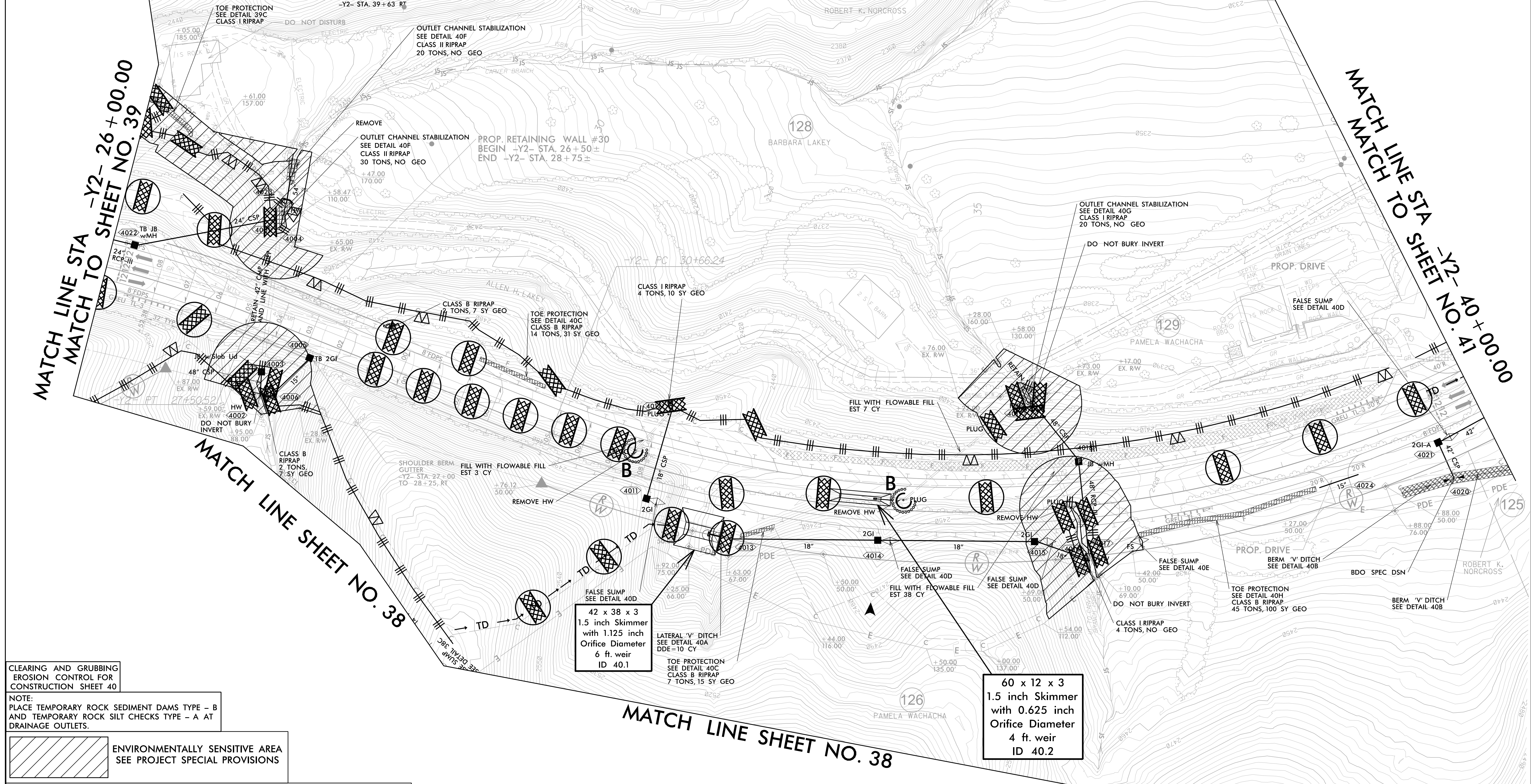
P1 Sta 25+91.41
 $\Delta = 15'17''06.51$ (RT)
 $D = 46'28.7''$
 $L = 320.3'$
 $T = 101.02'$
 $R = 1,200.00'$
 $SE = 0.08$
 $DS = 60$ MPH

 P1 Sta 44+39.36
 $\Delta = 102'05''50.9$ (LT)
 $D = 5'09''42.4''$
 $L = 1,977.95'$
 $T = 1,373.12'$
 $R = 1,110.00'$
 $SE = 0.08$
 $DS = 55$ MPH



MATCH LINE STA -Y2- 26+00.00 MATCH TO SHEET NO. 39

MATCH LINE STA -Y2- 40+00.00 MATCH TO SHEET NO. 41



CLEARING AND GRUBBING EROSION CONTROL FOR CONSTRUCTION SHEET 40

NOTE: PLACE TEMPORARY ROCK SEDIMENT DAMS TYPE - B AND TEMPORARY ROCK SILT CHECKS TYPE - A AT DRAINAGE OUTLETS.

 ENVIRONMENTALLY SENSITIVE AREA SEE PROJECT SPECIAL PROVISIONS

INSTALL PIPE(S) IN JURISDICTIONAL AREAS WITHOUT IMPACTING STREAM UNTIL AREA STABILIZED AND ACCORDING TO NCDOT BEST MANAGEMENT PRACTICES FOR CONSTRUCTION AND MAINTENANCE ACTIVITIES MANUAL.

NAD 83 2011