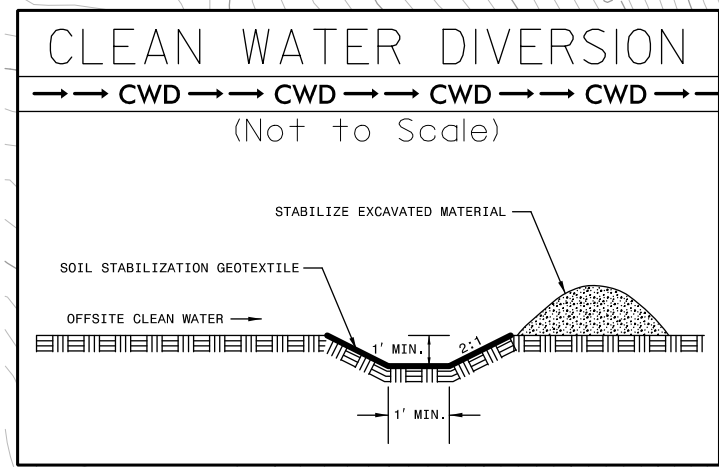


Y2 CURVE DATA		L CURVE DATA	
PI Sta 11+99.45	PI Sta 18+27.84	PI Sta 470+84.26	PI Sta 473+03.33
$\Delta = 19^{\circ} 44' 48.4''$ (LT)	$\Delta = 38^{\circ} 45' 19.5''$ (RT)	$\Delta = 21^{\circ} 31' 55.6''$ (LT)	$\Delta = 29^{\circ} 53' 24.9''$ (RT)
D = 5'-00" 00.0"	D = 12' 52' 31.6"	D = 7' 32' 20.1"	D = 57' 17' 44.8"
L = 394.94'	L = 301.00'	L = 285.61'	L = 132.45'
T = 199.45'	T = 156.51'	T = 144.51'	T = 77.97'
R = 1145.92'	R = 445.00'	R = 760.00'	R = 100.00'
SE = 0.08	SE = 0.08	SE = 0.04	SE = 0.03
DS = 55 MPH	DS = 40 MPH	DS = 45 MPH	DS = 20 MPH



42 x 21 x 3  
 1.5 inch Skimmer  
 with 0.75 inch  
 Orifice Diameter  
 4 ft. weir  
 ID 39.1

PROJECT REFERENCE NO. A-0009CC	SHEET NO. EC-08/CONST.39
ROADWAY DESIGN ENGINEER	HYDRAULICS ENGINEER
TGS ENGINEERS 201 W. MARION ST. STE 200 SHELBY, NC 28150 PH (704) 476-0003 CORP. LICENSE NO.: C-0275	

PROP. RETAINING WALL #39  
 W/CONCRETE DITCH  
 BEGIN -Y2- STA. 14+59 ±  
 END -Y2- STA. 16+25 ±

PROP. RETAINING WALL #40  
 W/CONCRETE DITCH  
 BEGIN -Y2- STA. 16+75 ±  
 END -Y2- STA. 18+70 ±

END CONSTRUCTION  
 -L- STA. 474+19.52  
 FOR CONCRETE ISLAND LAYOUT  
 SEE DETAIL SHT 2B-1

BEGIN CONSTRUCTION  
 -Y2- STA. 12+60.00

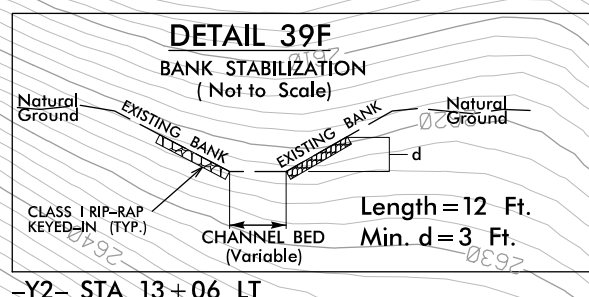
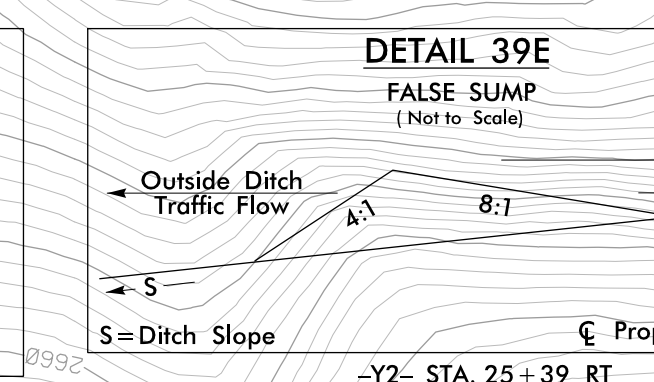
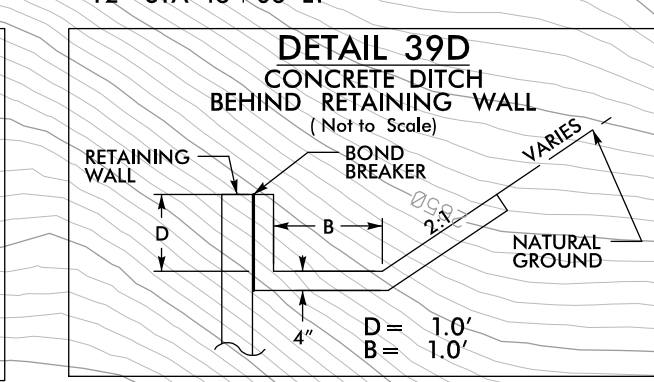
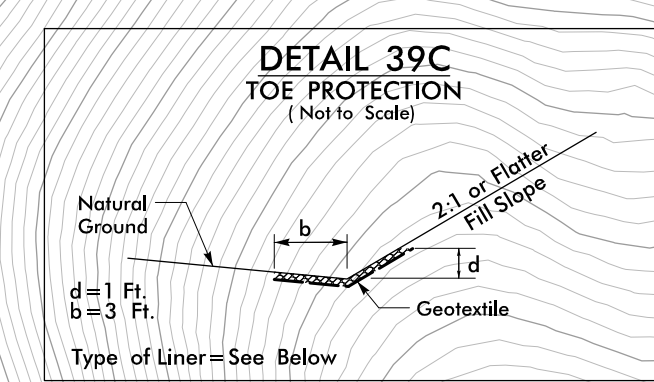
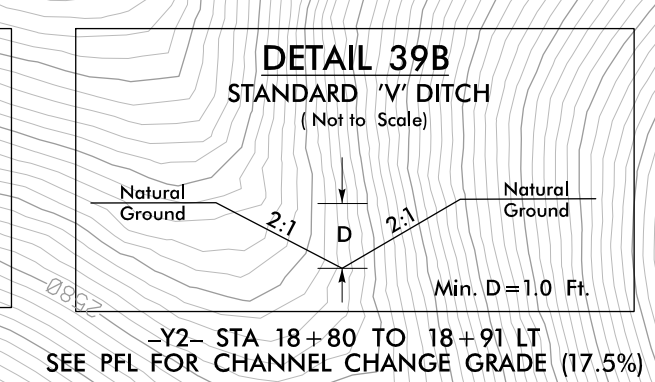
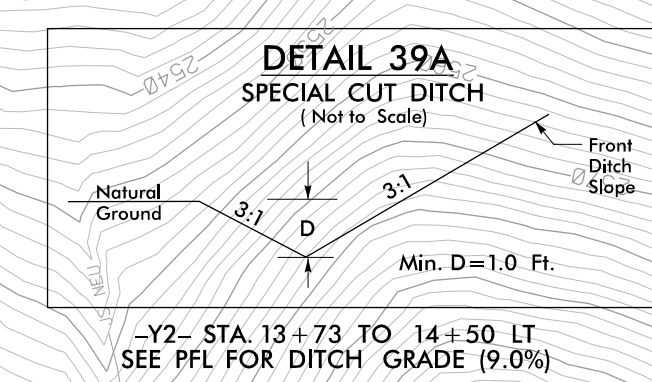
PROP. DRIVE  
 -Y2- PT 19+72.33

-Y2- PC 16+71.33

-L- PRC 472+25.36

MATCH LINE STA -L- 470+00.00  
 MATCH TO SHEET NO. 38

MATCH LINE STA -Y2- 26+00.00  
 MATCH TO SHEET NO. 40



PROP. RETAINING WALL #25  
 W/CONCRETE DITCH  
 BEGIN -L- STA. 468+75.00  
 END -L- STA. 471+75.00

MINIMIZE CLEARING AND GRUBBING SAFETY FENCE

CLEARING AND GRUBBING EROSION CONTROL FOR CONSTRUCTION SHEET 39

NOTE:  
 PLACE TEMPORARY ROCK SEDIMENT DAMS TYPE - B  
 AND TEMPORARY ROCK SILT CHECKS TYPE - A AT  
 DRAINAGE OUTLETS.

ENVIRONMENTALLY SENSITIVE AREA  
 SEE PROJECT SPECIAL PROVISIONS

INSTALL PIPE(S) IN JURISDICTIONAL AREAS WITHOUT IMPACTING STREAM UNTIL AREA STABILIZED AND ACCORDING TO NCDOT BEST MANAGEMENT PRACTICES FOR CONSTRUCTION AND MAINTENANCE ACTIVITIES MANUAL.