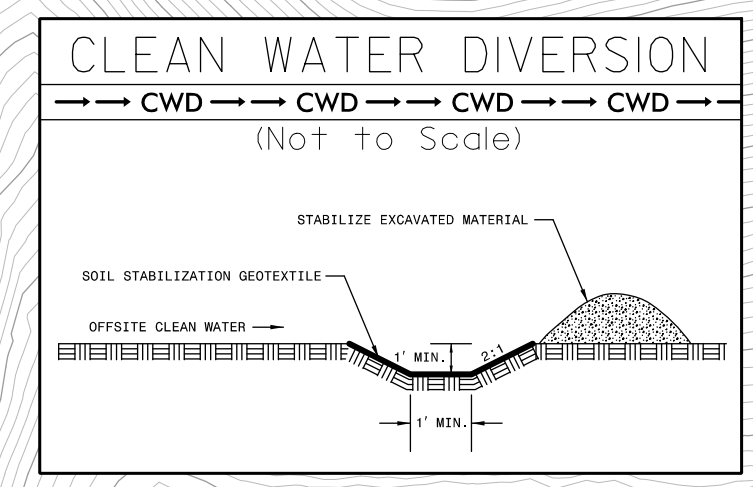
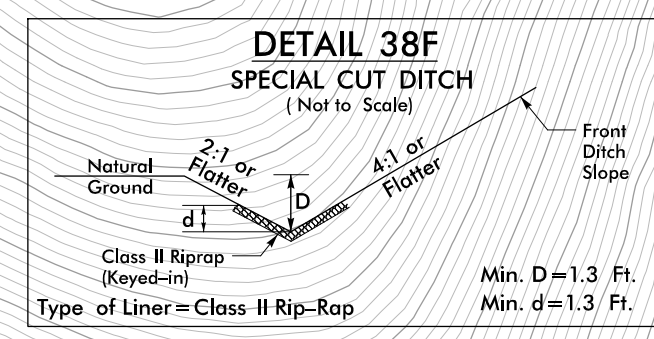
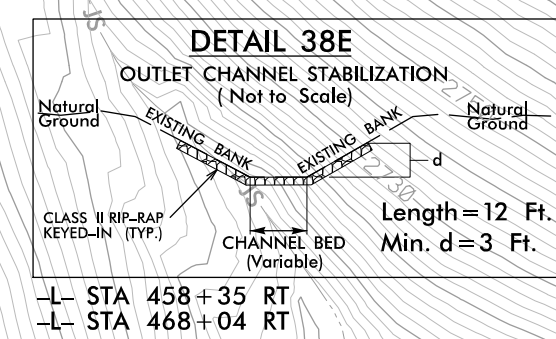
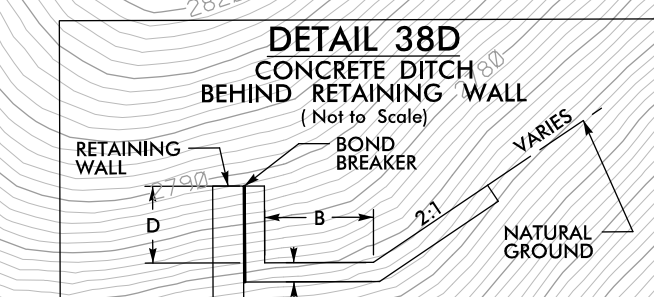
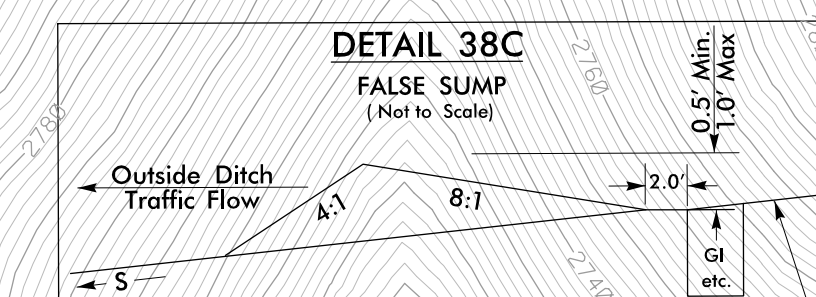
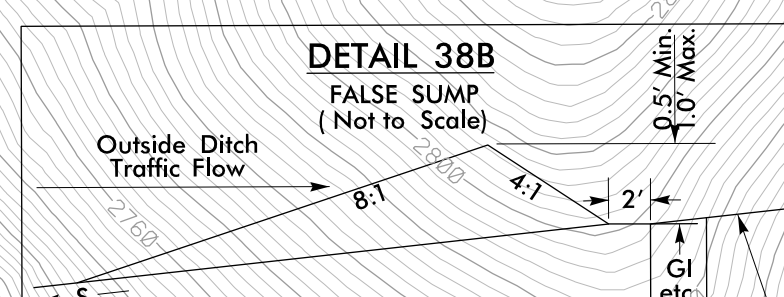
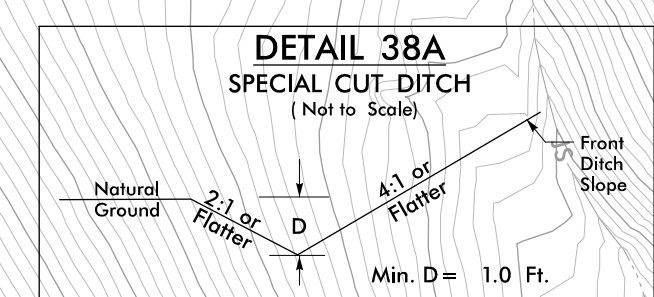


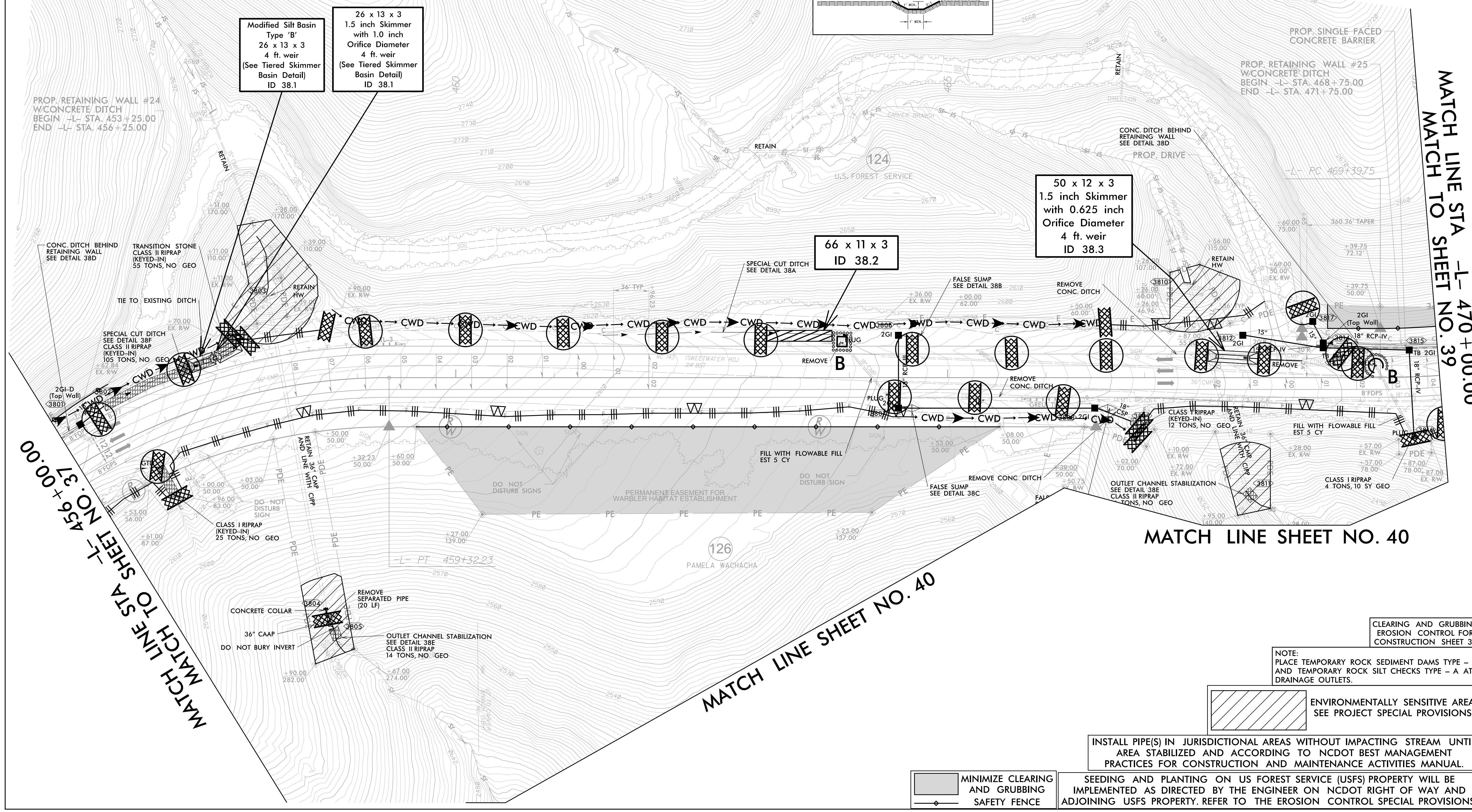
L-CURVE DATA

PI Sta 456+91.51	PI Sta 470+84.26
$\Delta = 49^{\circ}15'00.2''$ (RT)	$\Delta = 7^{\circ}32'55.6''$ (LT)
$D = 9^{\circ}32'57.5''$	$D = 7^{\circ}32'20.1''$
$L = 515.75'$	$L = 285.61'$
$T = 275.02'$	$T = 144.51'$
$R = 600.00'$	$R = 760.00'$
$SE = 0.08$	$SE = 0.04$
$DS = 45$ MPH	$DS = 45$ MPH

CLEAN WATER DIVERSIONS ARE INDEPENDENT OF OTHER EC DITCH LINES AND TERMINATE INTO A SC-A.



PROJECT REFERENCE NO. A-0009CC	SHEET NO. EC-07/CONST.38
ROADWAY DESIGN ENGINEER	HYDRAULICS ENGINEER
TGS ENGINEERS 201 W. MARION ST-STE 200 SHELBY, NC 28150 PH (704) 476-0003 CORP. LICENSE NO.: C-0275	



MATCH LINE STA 456+00.00
MATCH TO SHEET NO. 37

MATCH LINE STA 470+00.00
MATCH TO SHEET NO. 39

MATCH LINE SHEET NO. 40

MATCH LINE SHEET NO. 40

Modified Silt Basin
Type 'B'
26 x 13 x 3
4 ft. weir
(See Tiered Skimmer Basin Detail)
ID 38.1

26 x 13 x 3
1.5 inch Skimmer
with 1.0 inch
Orifice Diameter
4 ft. weir
(See Tiered Skimmer Basin Detail)
ID 38.1

66 x 11 x 3
ID 38.2

50 x 12 x 3
1.5 inch Skimmer
with 0.625 inch
Orifice Diameter
4 ft. weir
ID 38.3

CLEARING AND GRUBBING
EROSION CONTROL FOR
CONSTRUCTION SHEET 38

NOTE:
PLACE TEMPORARY ROCK SEDIMENT DAMS TYPE - B
AND TEMPORARY ROCK SILT CHECKS TYPE - A AT
DRAINAGE OUTLETS.

ENVIRONMENTALLY SENSITIVE AREA
SEE PROJECT SPECIAL PROVISIONS

INSTALL PIPE(S) IN JURISDICTIONAL AREAS WITHOUT IMPACTING STREAM UNTIL AREA STABILIZED AND ACCORDING TO NCDOT BEST MANAGEMENT PRACTICES FOR CONSTRUCTION AND MAINTENANCE ACTIVITIES MANUAL.

MINIMIZE CLEARING AND GRUBBING
SAFETY FENCE

SEEDING AND PLANTING ON US FOREST SERVICE (USFS) PROPERTY WILL BE IMPLEMENTED AS DIRECTED BY THE ENGINEER ON NCDOT RIGHT OF WAY AND ADJOINING USFS PROPERTY. REFER TO THE EROSION CONTROL SPECIAL PROVISIONS.