
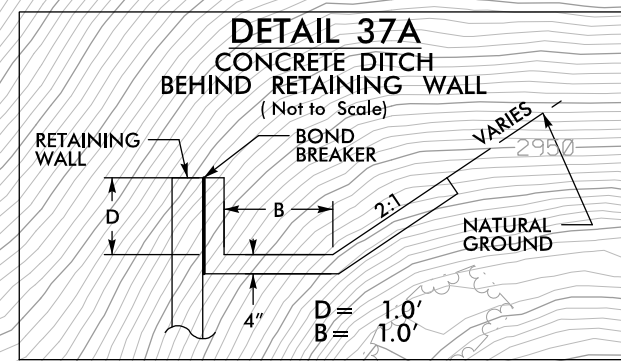
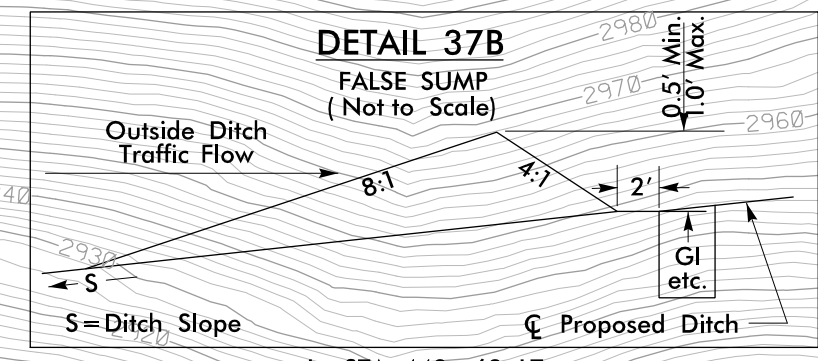


PROJECT REFERENCE NO.	SHEET NO.
A-0009CC	EC-06/CONST.37
RW SHEET NO.	
ROADWAY DESIGN ENGINEER	HYDRAULICS ENGINEER
 TGS ENGINEERS 201 W. MARION ST. STE 200 SHELBY, NC 28150 PH (704) 476-0003 CORP. LICENSE NO.: C-0275	

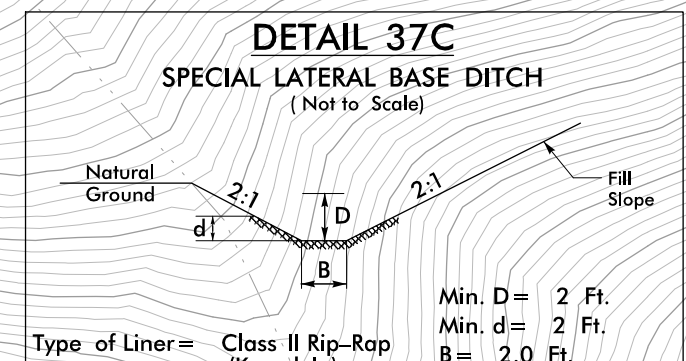
L-CURVE DATA
 PI STA 456+91.51
 $\Delta = 49^{\circ}15'00.2''$ (RT)
 $D = 9^{\circ}32'57.5''$
 $L = 515.75'$
 $T = 275.02'$
 $R = 600.00'$
 $SE = 6.08$
 $DS = 45$ MPH



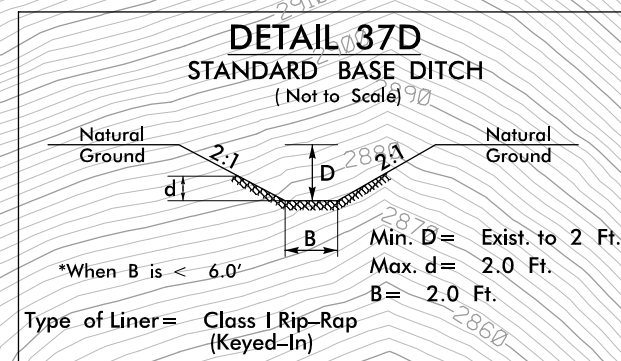
DETAIL 37A
 CONCRETE DITCH BEHIND RETAINING WALL
 (Not to Scale)
 -L- STA. 442+00 TO 442+50 LT
 -L- STA. 448+40 TO 452+25 LT
 -L- STA. 453+25 TO 456+00 LT
 (SEE WALL ENVELOPES FOR DITCH GRADE)



DETAIL 37B
 FALSE SUMP
 (Not to Scale)
 -L- STA. 443+62 LT
 -L- STA. 444+63 LT
 -L- STA. 446+64 LT



DETAIL 37C
 SPECIAL LATERAL BASE DITCH
 (Not to Scale)
 Type of Liner = Class II Rip-Rap (Keyed-In)
 -L- STA. 452+50 TO 453+00 LT

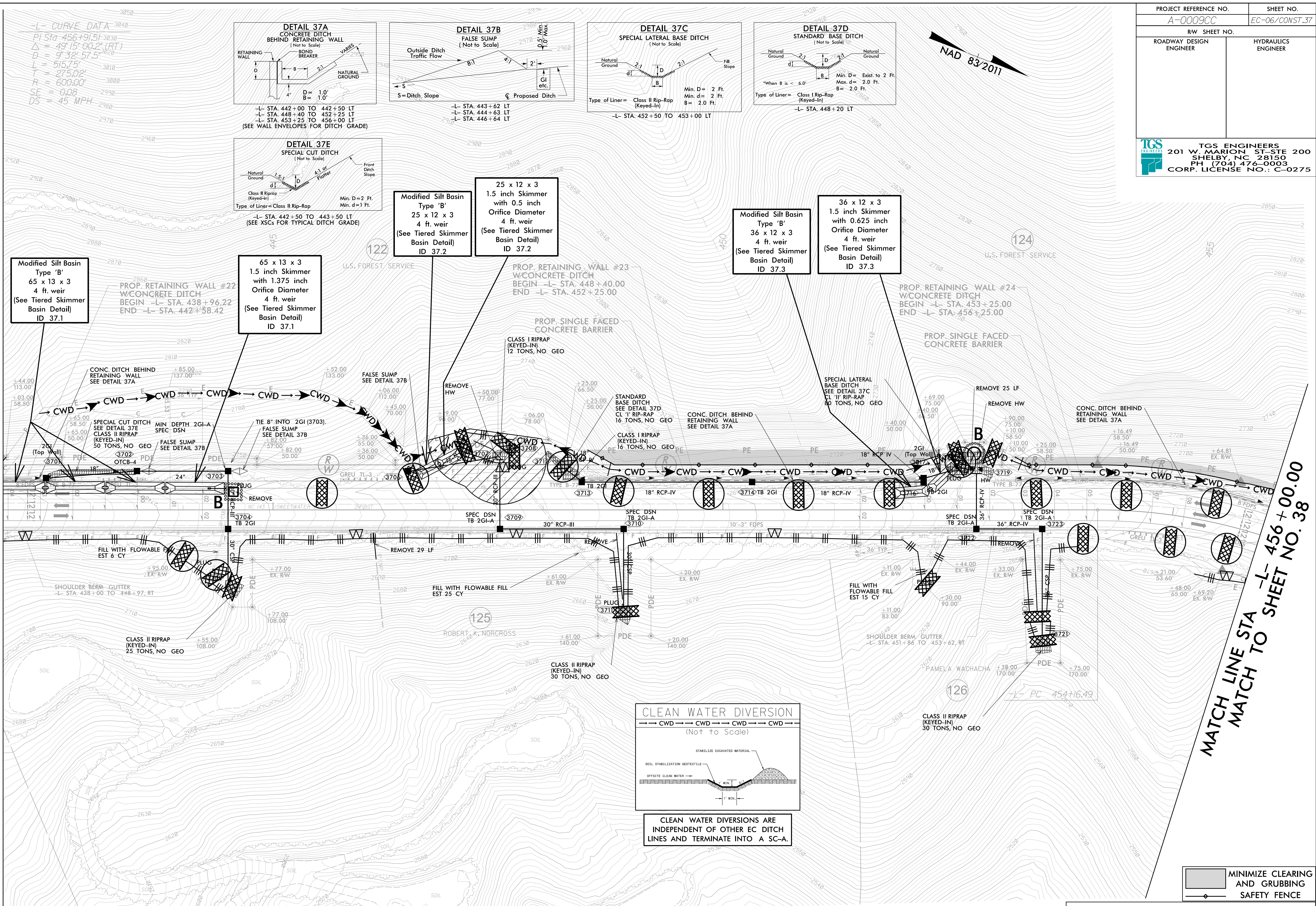


DETAIL 37D
 STANDARD BASE DITCH
 (Not to Scale)
 Type of Liner = Class I Rip-Rap (Keyed-In)
 -L- STA. 448+20 LT



MATCH LINE STA -L- 442+00.00
MATCH TO SHEET NO. 36

MATCH LINE STA -L- 456+00.00
MATCH TO SHEET NO. 38



Modified Silt Basin Type 'B'
 65 x 13 x 3
 4 ft. weir
 (See Tiered Skimmer Basin Detail)
 ID 37.1

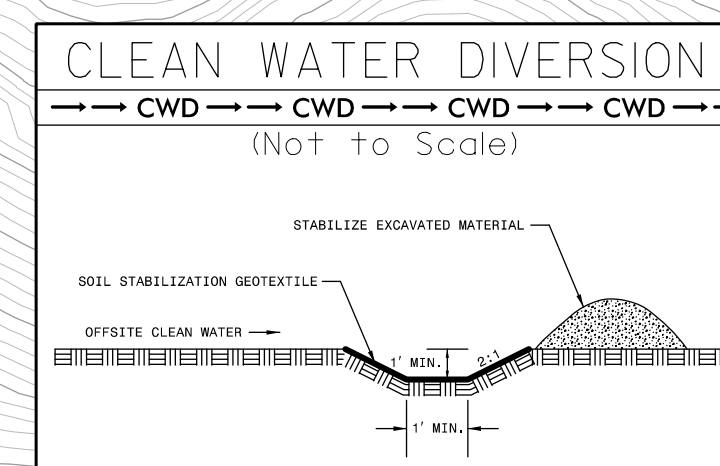
65 x 13 x 3
 1.5 inch Skimmer with 1.375 inch Orifice Diameter
 4 ft. weir
 (See Tiered Skimmer Basin Detail)
 ID 37.1

Modified Silt Basin Type 'B'
 25 x 12 x 3
 4 ft. weir
 (See Tiered Skimmer Basin Detail)
 ID 37.2

25 x 12 x 3
 1.5 inch Skimmer with 0.5 inch Orifice Diameter
 4 ft. weir
 (See Tiered Skimmer Basin Detail)
 ID 37.2

Modified Silt Basin Type 'B'
 36 x 12 x 3
 4 ft. weir
 (See Tiered Skimmer Basin Detail)
 ID 37.3

36 x 12 x 3
 1.5 inch Skimmer with 0.625 inch Orifice Diameter
 4 ft. weir
 (See Tiered Skimmer Basin Detail)
 ID 37.3



CLEAN WATER DIVERSIONS ARE INDEPENDENT OF OTHER EC DITCH LINES AND TERMINATE INTO A SC-A.

 MINIMIZE CLEARING AND GRUBBING
 SAFETY FENCE

SEEDING AND PLANTING ON US FOREST SERVICE (USFS) PROPERTY WILL BE IMPLEMENTED AS DIRECTED BY THE ENGINEER ON NCDOT RIGHT OF WAY AND ADJOINING USFS PROPERTY. REFER TO THE EROSION CONTROL SPECIAL PROVISIONS.

CLEARING AND GRUBBING EROSION CONTROL FOR CONSTRUCTION SHEET 37

INSTALL PIPE(S) IN JURISDICTIONAL AREAS WITHOUT IMPACTING STREAM UNTIL AREA STABILIZED AND ACCORDING TO NCDOT BEST MANAGEMENT PRACTICES FOR CONSTRUCTION AND MAINTENANCE ACTIVITIES MANUAL.

NOTE: PLACE TEMPORARY ROCK SEDIMENT DAMS TYPE - B AND TEMPORARY ROCK SILT CHECKS TYPE - A AT DRAINAGE OUTLETS.

 ENVIRONMENTALLY SENSITIVE AREA
 SEE PROJECT SPECIAL PROVISIONS