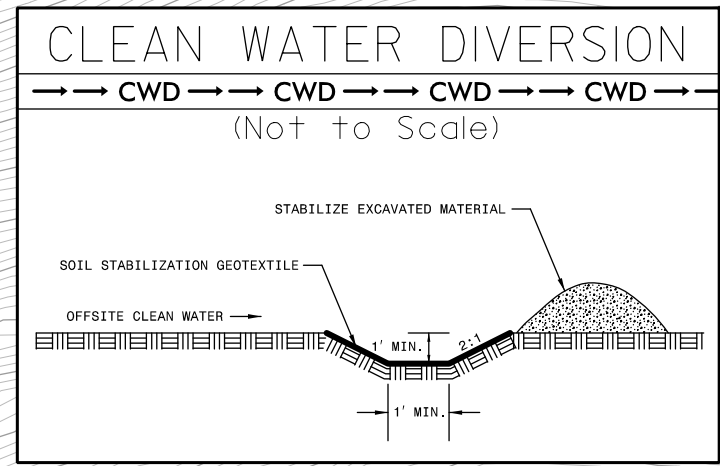


SEEDING AND PLANTING ON US FOREST SERVICE (USFS) PROPERTY WILL BE IMPLEMENTED AS DIRECTED BY THE ENGINEER ON NCDOT RIGHT OF WAY AND ADJOINING USFS PROPERTY. REFER TO THE EROSION CONTROL SPECIAL PROVISIONS.

IN LIEU OF ROCK INLET SEDIMENT TRAP TYPE C, UTILIZE FABRIC INSERT INLET PROTECTION DEVICES IN AREAS WHERE WATER MAY POND ON ROAD OPEN TO LIVE TRAFFIC.

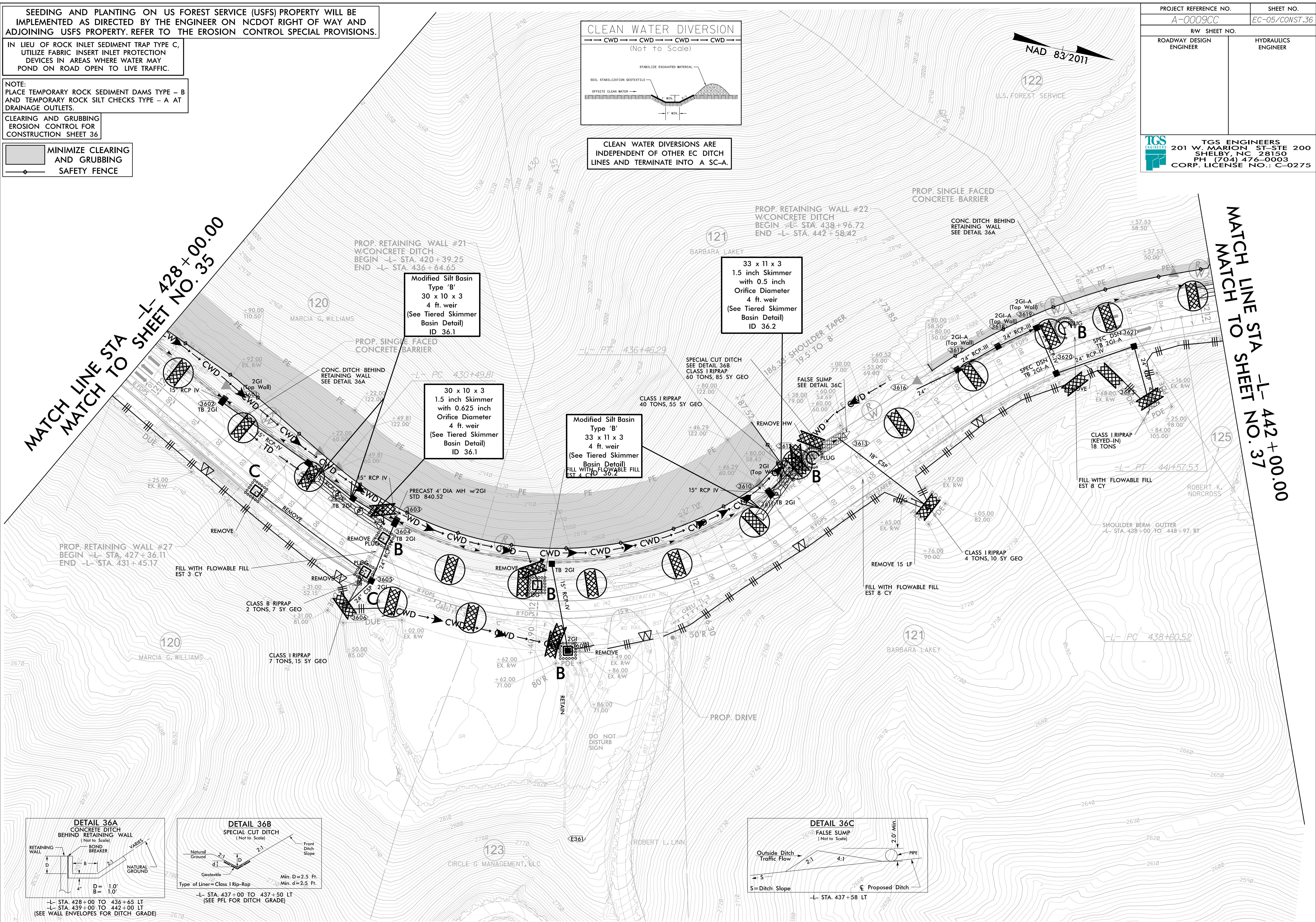
NOTE: PLACE TEMPORARY ROCK SEDIMENT DAMS TYPE - B AND TEMPORARY ROCK SILT CHECKS TYPE - A AT DRAINAGE OUTLETS.

CLEARING AND GRUBBING EROSION CONTROL FOR CONSTRUCTION SHEET 36



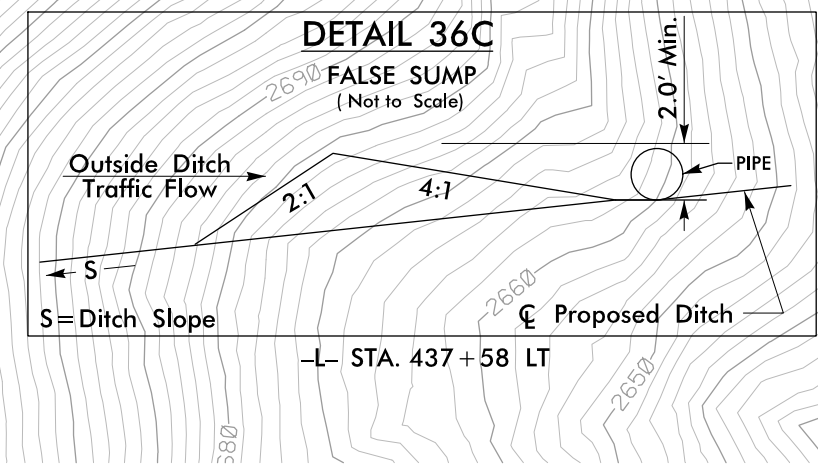
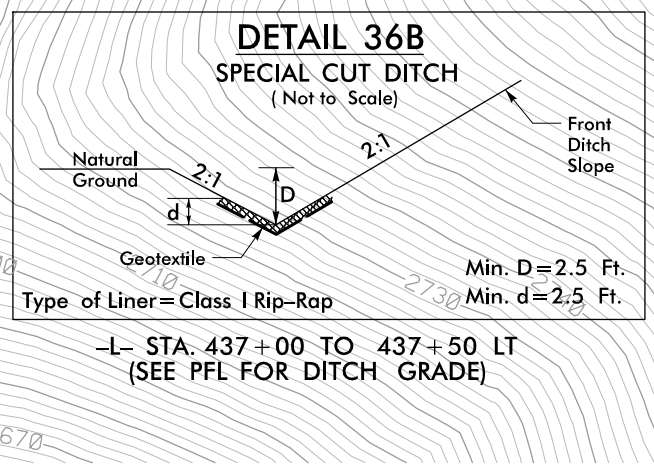
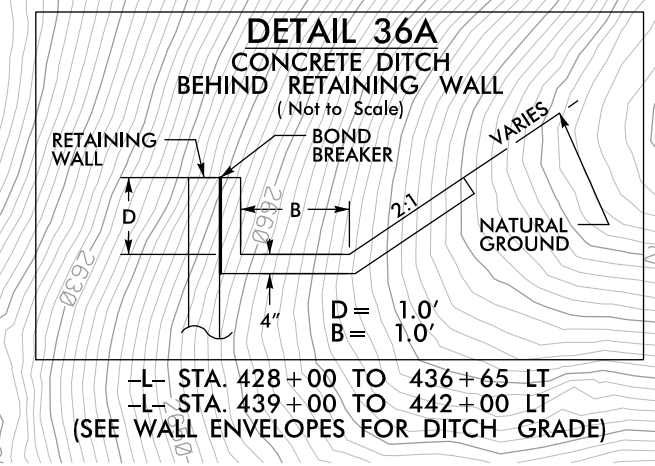
CLEAN WATER DIVERSIONS ARE INDEPENDENT OF OTHER EC DITCH LINES AND TERMINATE INTO A SC-A.

PROJECT REFERENCE NO.	SHEET NO.
A-0009CC	EC-05/CONST.36
RW SHEET NO.	
ROADWAY DESIGN ENGINEER	HYDRAULICS ENGINEER
TGS ENGINEERS 201 W. MARION ST-STE 200 SHELBY, NC 28150 PH (704) 476-0003 CORP. LICENSE NO.: C-0275	



MATCH LINE STA -L- 428+00.00
MATCH TO SHEET NO. 35

MATCH LINE STA -L- 442+00.00
MATCH TO SHEET NO. 37



Modified Silt Basin Type 'B' 30 x 10 x 3 4 ft. weir (See Tiered Skimmer Basin Detail) ID 36.1

30 x 10 x 3 1.5 inch Skimmer with 0.625 inch Orifice Diameter 4 ft. weir (See Tiered Skimmer Basin Detail) ID 36.1

Modified Silt Basin Type 'B' 33 x 11 x 3 4 ft. weir (See Tiered Skimmer Basin Detail) ID 36.2

33 x 11 x 3 1.5 inch Skimmer with 0.5 inch Orifice Diameter 4 ft. weir (See Tiered Skimmer Basin Detail) ID 36.2

PROP. RETAINING WALL #27 BEGIN -L- STA. 427+36.11 END -L- STA. 431+45.17

PROP. RETAINING WALL #21 W/CONCRETE DITCH BEGIN -L- STA. 420+39.25 END -L- STA. 436+64.65

PROP. RETAINING WALL #22 W/CONCRETE DITCH BEGIN -L- STA. 438+96.72 END -L- STA. 442+58.42

FILL WITH FLOWABLE FILL EST 3 CY

REMOVE PLUG

REMOVE PLUG

FILL WITH FLOWABLE FILL EST 8 CY

FILL WITH FLOWABLE FILL EST 8 CY

SHOULDER BERM GUTTER -L- STA. 438+00 TO 448+97. RT

-L- STA. 428+00 TO 436+65 LT
-L- STA. 439+00 TO 442+00 LT
(SEE WALL ENVELOPES FOR DITCH GRADE)

-L- STA. 437+00 TO 437+50 LT
(SEE PFL FOR DITCH GRADE)

-L- STA. 437+58 LT