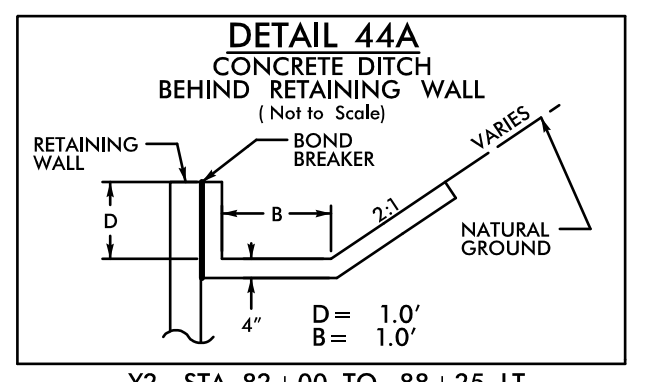


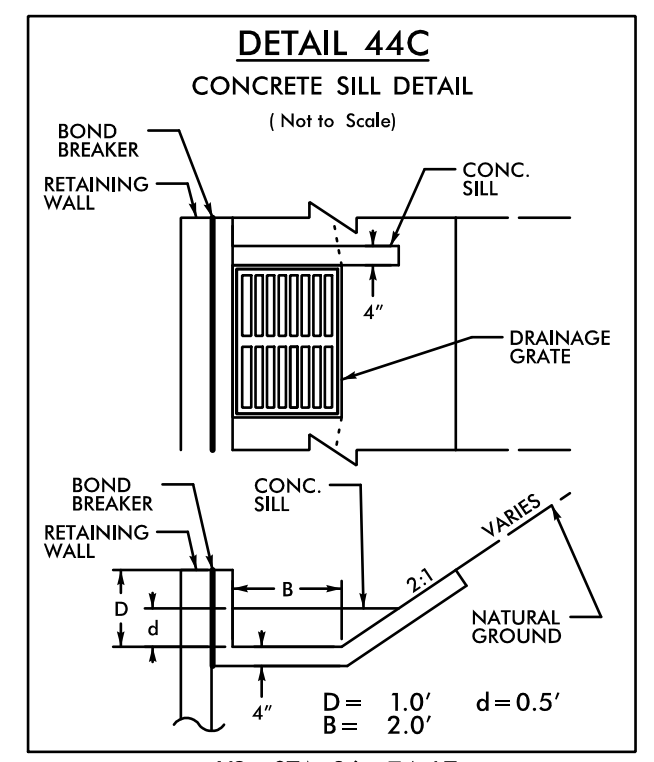
8/17/2017

-Y2- CURVE DATA
 PI Sta 83+84.46
 $\Delta = 52^{\circ}00'01.9" (LT)$
 $D = 5^{\circ}24'18.9"$
 $L = 962.04'$
 $T = 517.00'$
 $R = 1,060.00'$
 $SE = 0.08$
 $DS = 55 \text{ MPH}$

NOTE:
 ALL DRIVEWAYS ARE TO BE ASPHALT UNLESS OTHERWISE NOTED. END LOCATION OF DRIVEWAY SHOWN ON PLANS REPRESENTS TIE-IN PER CROSS-SECTIONS, THE CONTRACTOR SHALL EXTEND THE DRIVES AND PAVE UP TO THE RIGHT OF WAY LINE. FROM ROW POINT ON MATCH DRIVEWAY IN KIND, UNLESS OTHERWISE NOTED.



-Y2- STA. 82+00 TO 88+25 LT
 (SEE WALL ENVELOPES FOR DITCH GRADE)



-Y2- STA. 86+74 LT

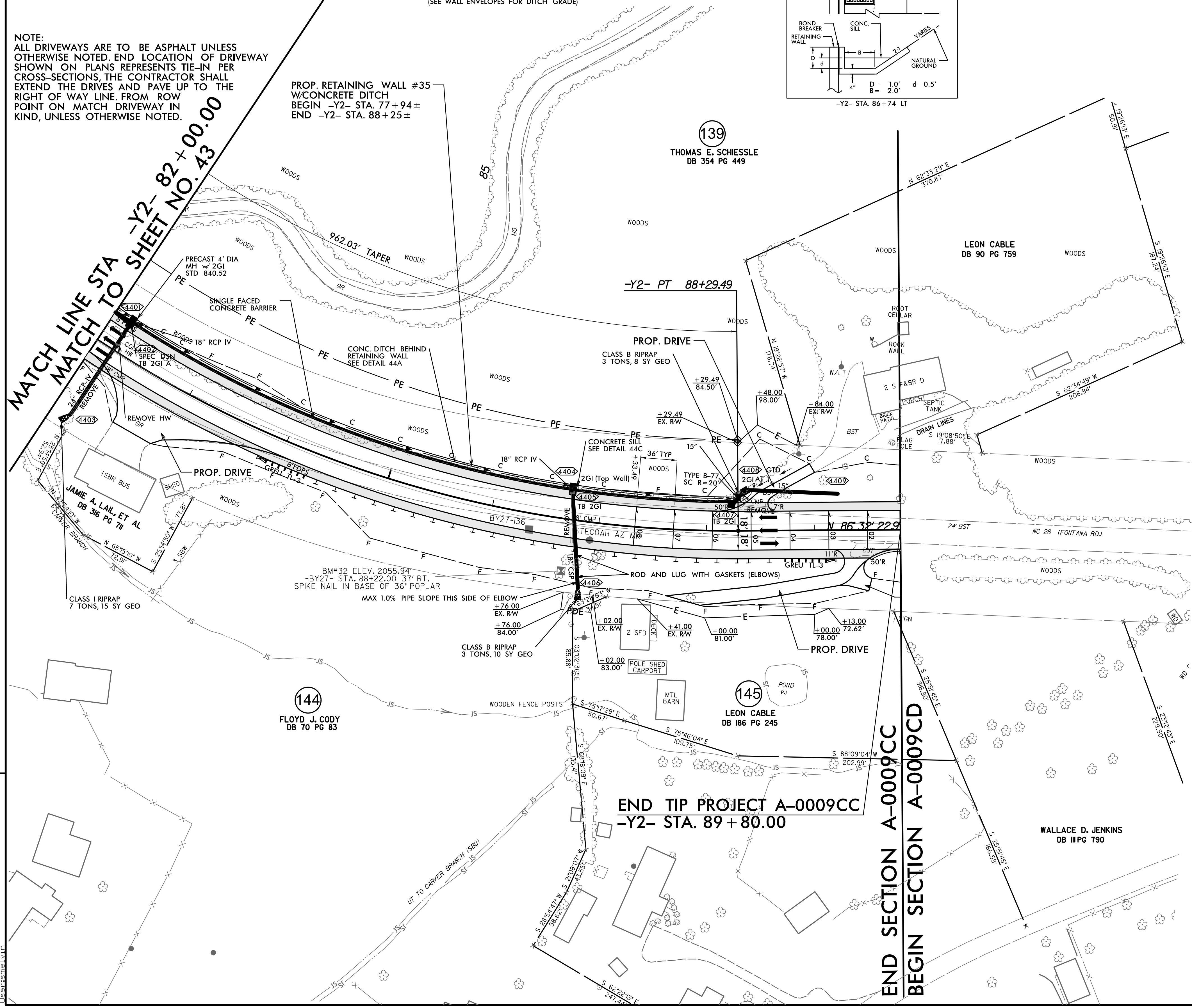
NAD 83/2011

PROJECT REFERENCE NO. A-0009CC		SHEET NO. 44	
RW SHEET NO.		HYDRAULICS ENGINEER	
ROADWAY DESIGN ENGINEER		HYDRAULICS ENGINEER	
DOCUMENT NOT CONSIDERED FINAL UNLESS ALL SIGNATURES COMPLETED			
TGS ENGINEERS 201 W. MARION ST SHELBY, NC 28150 PH: (704) 476-0003 CORP. LICENSE NO.: C-0275			

REVISIONS

**MATCH LINE STA -Y2- 82+00.00
 MATCH TO SHEET NO. 43**

X:\NC009\A-0009\Roadway\Proj\A-0009\CC_Plan
 Sheets\A-0009\CC_Plan
 8/17/2017



**END TIP PROJECT A-0009CC
 -Y2- STA. 89+80.00**

**END SECTION A-0009CC
 BEGIN SECTION A-0009CD**