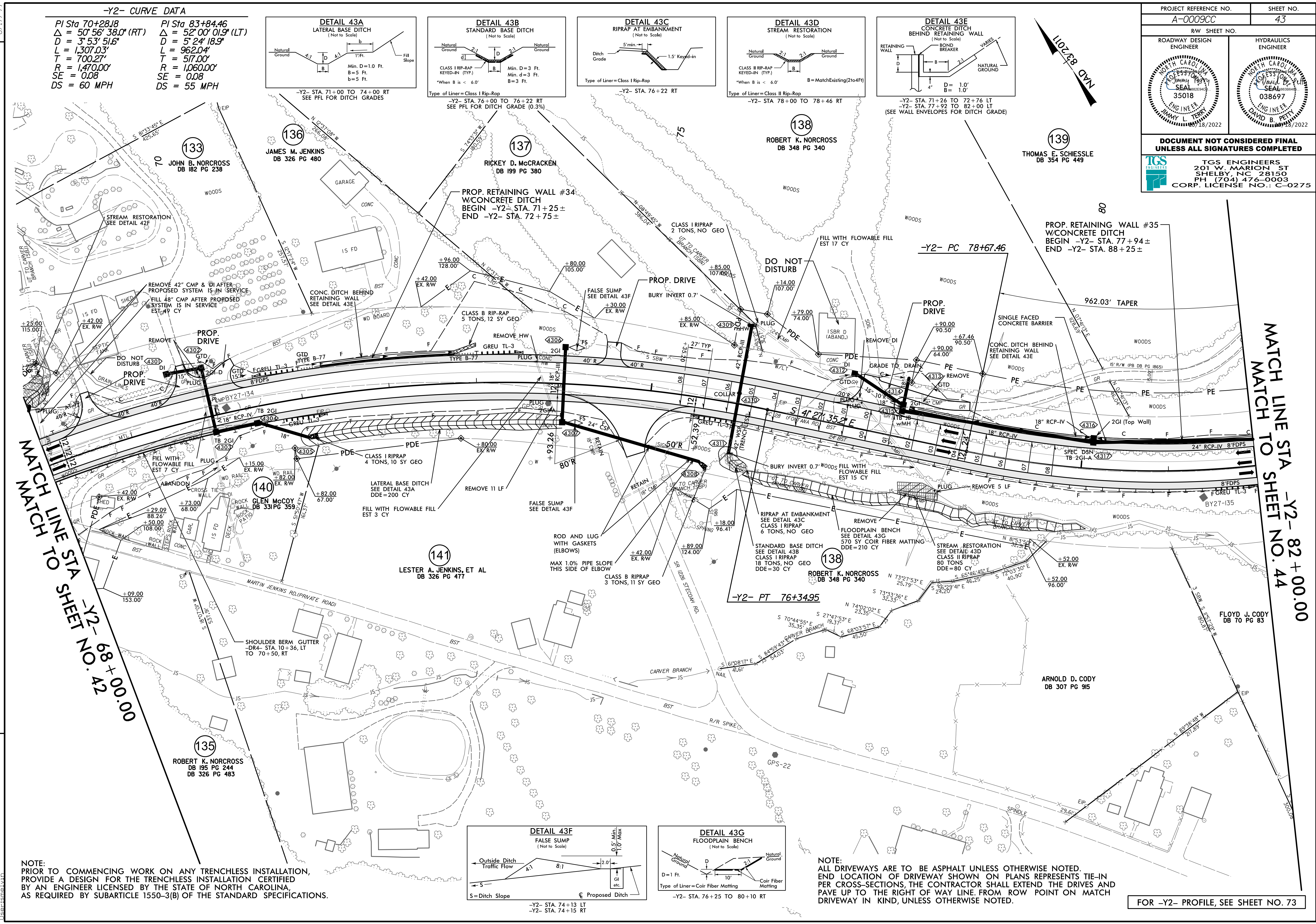


PROJECT REFERENCE NO. A-0009CC	SHEET NO. 43
ROADWAY DESIGN ENGINEER	HYDRAULICS ENGINEER
DOCUMENT NOT CONSIDERED FINAL UNLESS ALL SIGNATURES COMPLETED	
TGS ENGINEERS 201 W. MARION ST SHELBY, NC 28150 PH (704) 476-0003 CORP. LICENSE NO.: C-0275	



NOTE:
PRIOR TO COMMENCING WORK ON ANY TRENCHLESS INSTALLATION,
PROVIDE A DESIGN FOR THE TRENCHLESS INSTALLATION CERTIFIED
BY AN ENGINEER LICENSED BY THE STATE OF NORTH CAROLINA,
AS REQUIRED BY SUBARTICLE 1550-3(B) OF THE STANDARD SPECIFICATIONS.

NOTE:
ALL DRIVEWAYS ARE TO BE ASPHALT UNLESS OTHERWISE NOTED.
END LOCATION OF DRIVEWAY SHOWN ON PLANS REPRESENTS TIE-IN
PER CROSS-SECTIONS, THE CONTRACTOR SHALL EXTEND THE DRIVES AND
PAVE UP TO THE RIGHT OF WAY LINE. FROM ROW POINT ON MATCH
DRIVEWAY IN KIND, UNLESS OTHERWISE NOTED.

FOR -Y2- PROFILE, SEE SHEET NO. 73

10/17/2023
 X:\Projects\A-0009\Roadway\Proj\A-0009CC_Plan_Sheets\A-0009CC_Rdw_psh_43.dgn
 Sheets\A-0009CC_Plan_Sheets\A-0009CC_Rdw_psh_43.dgn
 8/17/2019

MATCH LINE STA -Y2- 82+00.00
 MATCH TO SHEET NO. 44

MATCH LINE TO STA -Y2- 68+00.00
 MATCH TO SHEET NO. 42

REVISIONS