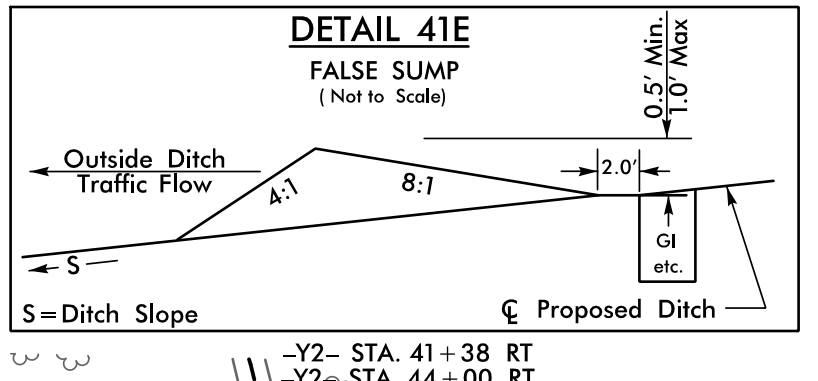
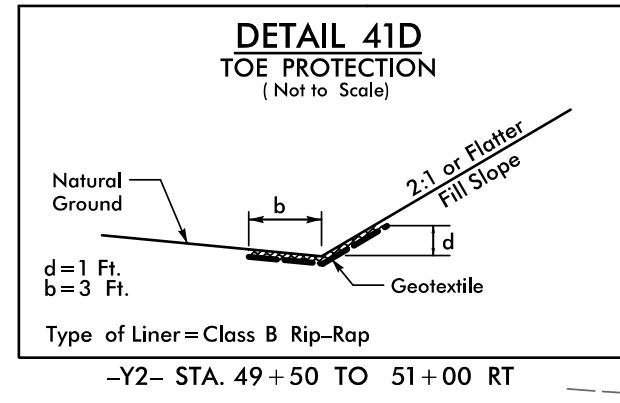
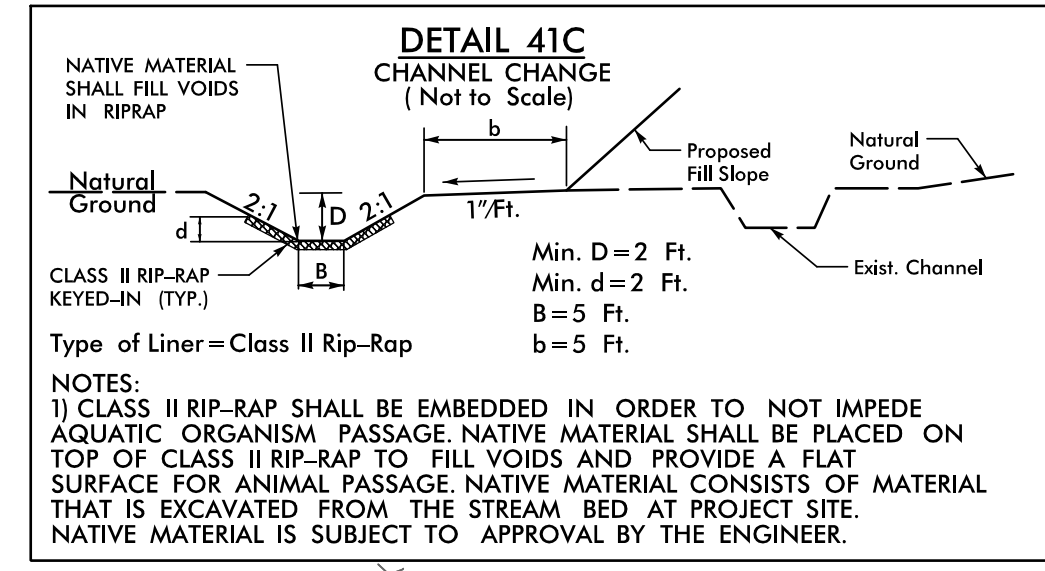
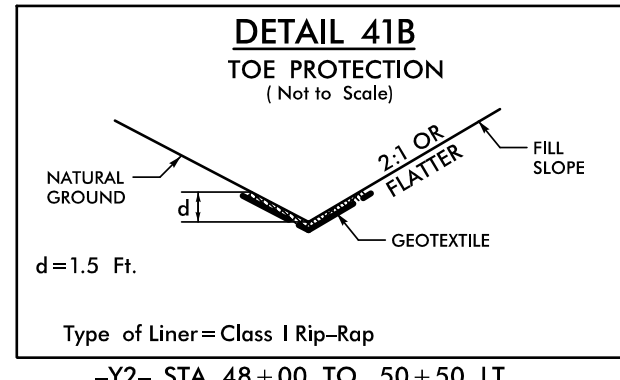
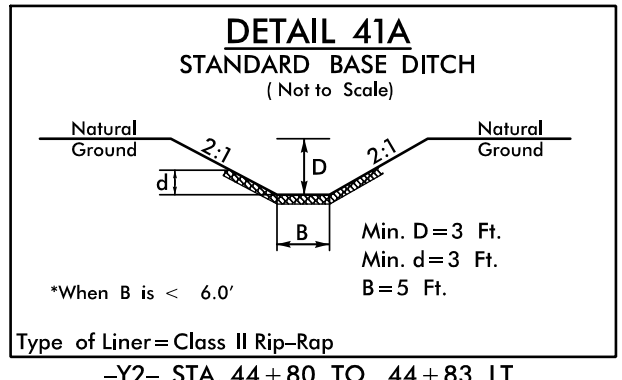


METES & BOUNDS OLD NC 28			
From	To	Direction	Distance
A	B	S 41° 15' 05" E	90.11'
B	C	S 50° 40' 15" E	37.42'
C	D	S 85° 45' 59" E	39.64'
D	E	N 58° 32' 14" E	42.05'
E	F	N 25° 05' 07" E	37.05'
F	G	N 2° 03' 42" E	39.94'
G	H	N 2° 07' 51" W	84.63'
H	J	N 3° 00' 57" E	66.88'

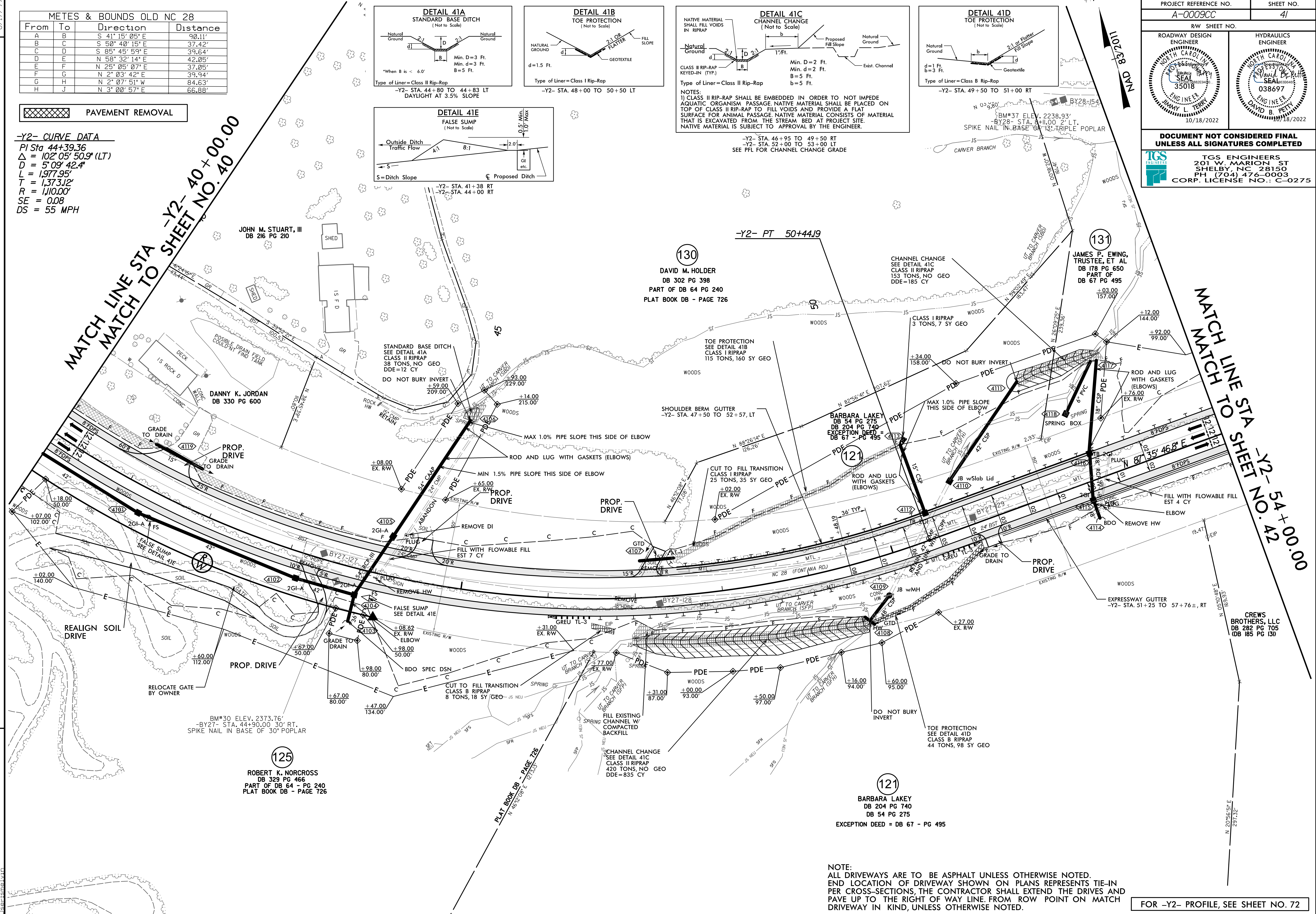
PAVEMENT REMOVAL

**-Y2- CURVE DATA**  
 PI Sta 44+39.36  
 $\Delta = 102^{\circ} 05' 50.9" (LT)$   
 $D = 5^{\circ} 09' 42.4"$   
 $L = 1,977.95'$   
 $T = 1,373.12'$   
 $R = 1,110.00'$   
 $SE = 0.08$   
 $DS = 55 MPH$



NOTES:  
 1) CLASS II RIP-RAP SHALL BE EMBEDDED IN ORDER TO NOT IMPEDE AQUATIC ORGANISM PASSAGE. NATIVE MATERIAL SHALL BE PLACED ON TOP OF CLASS II RIP-RAP TO FILL VOIDS AND PROVIDE A FLAT SURFACE FOR ANIMAL PASSAGE. NATIVE MATERIAL CONSISTS OF MATERIAL THAT IS EXCAVATED FROM THE STREAM BED AT PROJECT SITE. NATIVE MATERIAL IS SUBJECT TO APPROVAL BY THE ENGINEER.

PROJECT REFERENCE NO. <b>A-0009CC</b>	SHEET NO. <b>41</b>
ROADWAY DESIGN ENGINEER 	HYDRAULICS ENGINEER 
DATE: 10/18/2022	
<b>DOCUMENT NOT CONSIDERED FINAL UNLESS ALL SIGNATURES COMPLETED</b>	
TGS ENGINEERS 201 W. MARION ST SHELBY, NC 28150 PH: (704) 476-0003 CORP. LICENSE NO.: C-0275	



MATCH LINE STA -Y2- 40+00.00  
MATCH TO SHEET NO. 40

MATCH LINE TO SHEET NO. 54  
MATCH TO SHEET NO. 42

REVISIONS  
 10/17/2022 A-0009CC-Roadway\Proj\A-0009CC\_Plan\_Sheets\A-0009CC\_Rdy\_psh\_41.dgn  
 10/17/2022 A-0009CC-Roadway\Proj\A-0009CC\_Plan\_Sheets\A-0009CC\_Rdy\_psh\_41.dgn

JOHN M. STUART, III  
DB 216 PG 210

DANNY K. JORDAN  
DB 330 PG 600

(130)  
DAVID M. HOLDER  
DB 302 PG 398  
PART OF DB 64 PG 240  
PLAT BOOK DB - PAGE 726

(131)  
JAMES P. EWING, TRUSTEE, ET AL  
DB 178 PG 650  
PART OF DB 67 PG 495

(121)  
BARBARA LAKEY  
DB 54 PG 275  
DB 204 PG 740  
EXCEPTION DEED = DB 67 - PG 495

(125)  
ROBERT K. NORCROSS  
DB 329 PG 466  
PART OF DB 64 - PG 240  
PLAT BOOK DB - PAGE 726

(121)  
BARBARA LAKEY  
DB 204 PG 740  
DB 54 PG 275  
EXCEPTION DEED = DB 67 - PG 495

NOTE:  
 ALL DRIVEWAYS ARE TO BE ASPHALT UNLESS OTHERWISE NOTED.  
 END LOCATION OF DRIVEWAY SHOWN ON PLANS REPRESENTS TIE-IN PER CROSS-SECTIONS, THE CONTRACTOR SHALL EXTEND THE DRIVES AND PAVE UP TO THE RIGHT OF WAY LINE FROM ROW POINT ON MATCH DRIVEWAY IN KIND, UNLESS OTHERWISE NOTED.

FOR -Y2- PROFILE, SEE SHEET NO. 72