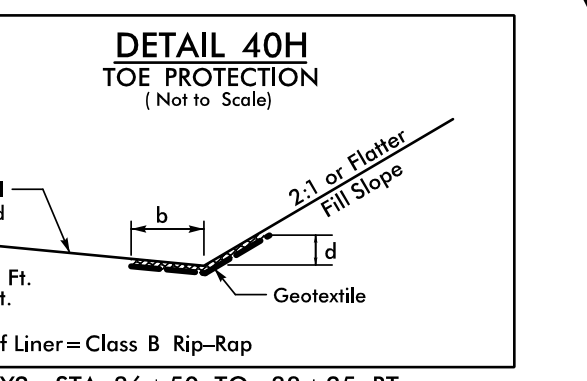
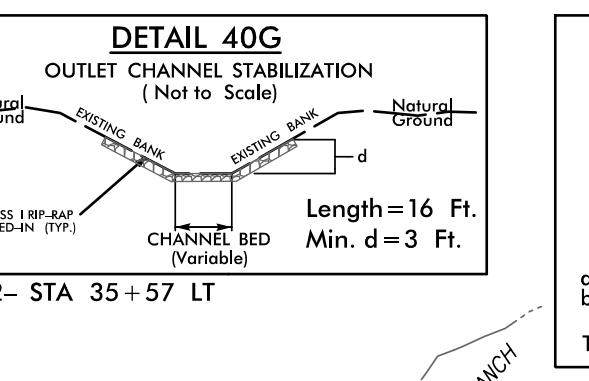
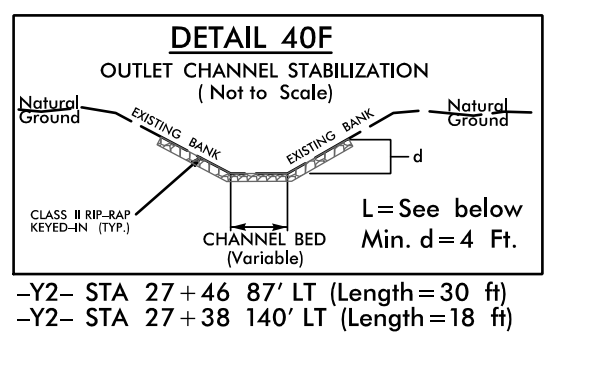
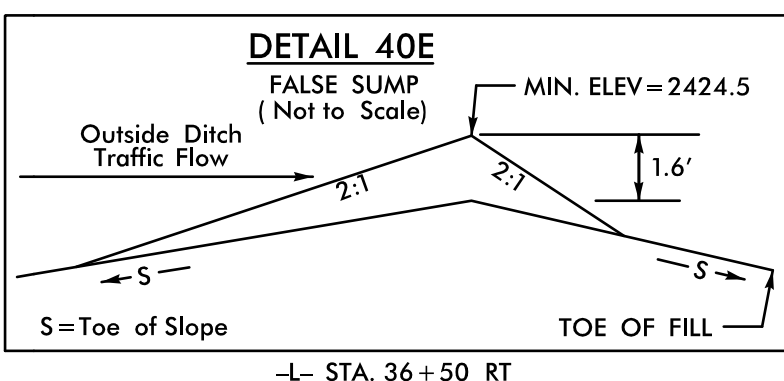
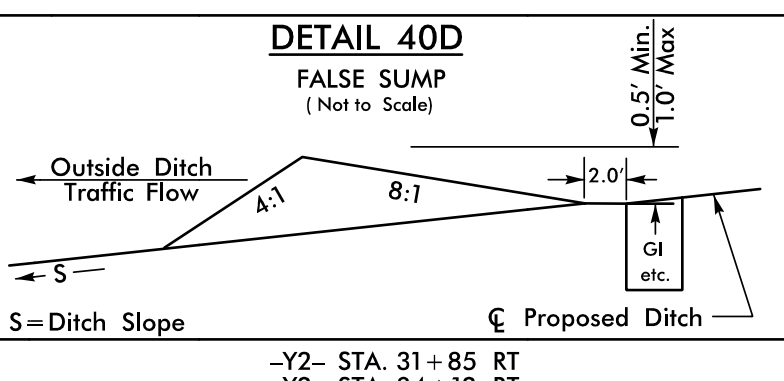
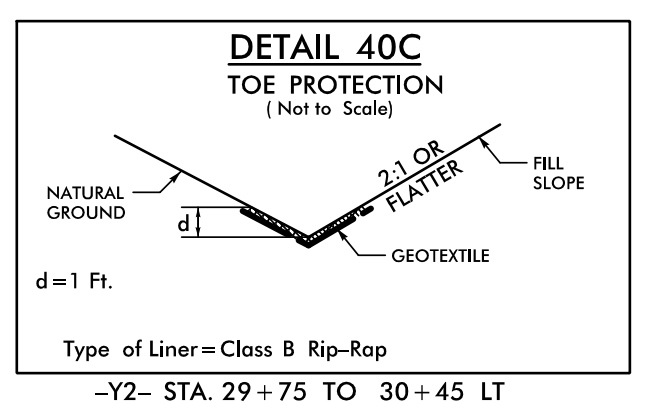
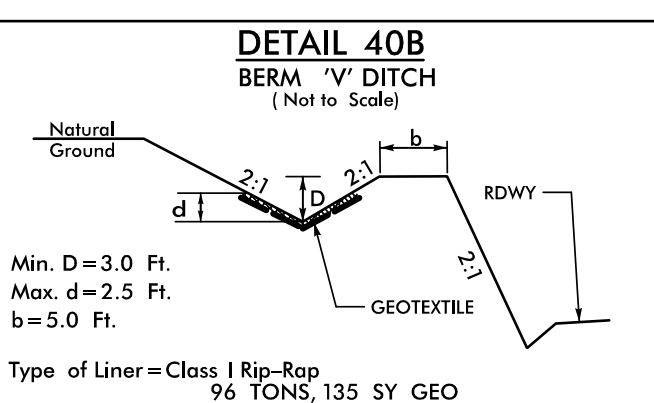
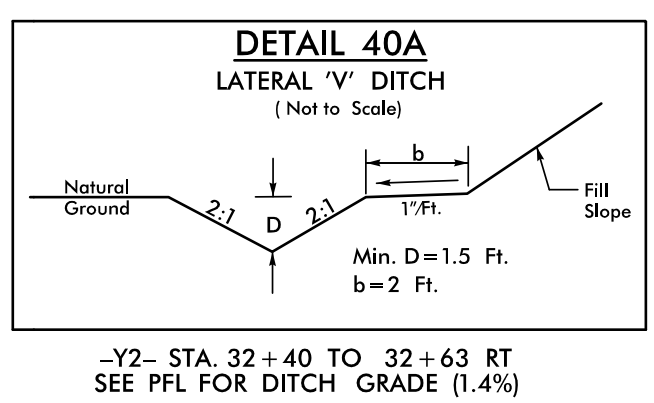


8/17/99

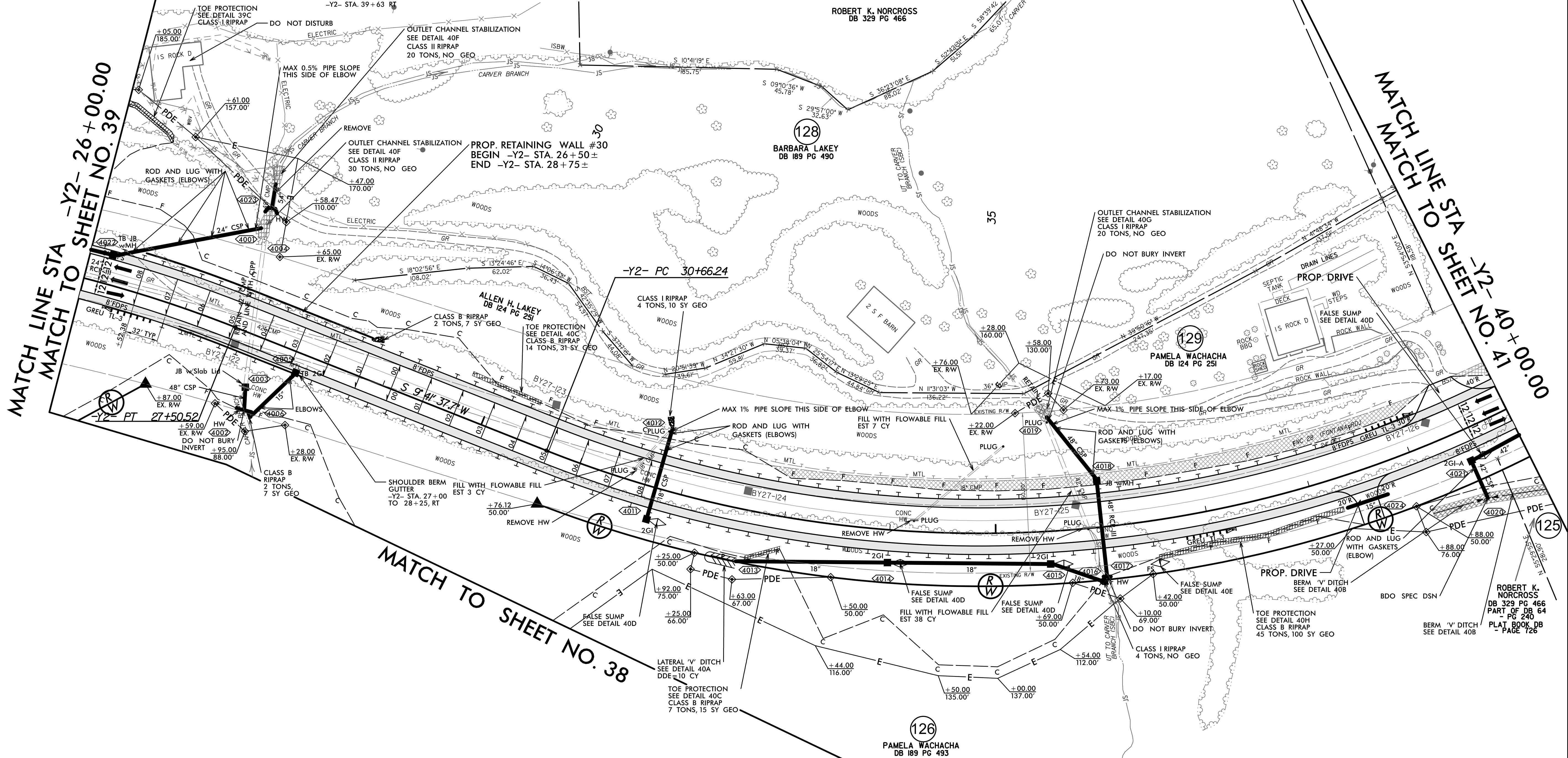


-Y2- CURVE DATA

| | |
|------------------------------------|-------------------------------------|
| PI Sta 25+91.41 | PI Sta 44+39.36 |
| $\Delta = 15^\circ 17' 06.5" (RT)$ | $\Delta = 102^\circ 05' 50.9" (LT)$ |
| $D = 4' 46" 28.7"$ | $D = 5' 09" 42.4"$ |
| $L = 3201.3'$ | $L = 1977.95'$ |
| $T = 161.02'$ | $T = 137.312'$ |
| $R = 1,200.00'$ | $R = 1,110.00'$ |
| $SE = 0.08$ | $SE = 0.08$ |
| $DS = 60 \text{ MPH}$ | $DS = 55 \text{ MPH}$ |



| | |
|--|---------------------|
| PROJECT REFERENCE NO. A-0009CC | SHEET NO. 40 |
| ROADWAY DESIGN ENGINEER | HYDRAULICS ENGINEER |
| | |
| DOCUMENT NOT CONSIDERED FINAL UNLESS ALL SIGNATURES COMPLETED | |
| TGS ENGINEERS 201 W. MARION ST SHELBY, NC 28150 PH: (704) 476-0003 CORP. LICENSE NO.: C-0275 | |



NOTE:
ALL DRIVEWAYS ARE TO BE ASPHALT UNLESS OTHERWISE NOTED.
END LOCATION OF DRIVEWAY SHOWN ON PLANS REPRESENTS TIE-IN PER CROSS-SECTIONS, THE CONTRACTOR SHALL EXTEND THE DRIVES AND PAVE TO THE RIGHT OF WAY LINE FROM ROW POINT ON MATCH DRIVEWAY IN KIND, UNLESS OTHERWISE NOTED.

FOR -Y2- PROFILE, SEE SHEET NO. 72

Revisions:
8/17/2009
X:\Projects\A-0009\Roadway\Proj\A-0009CC_Plan
X:\Projects\A-0009\Roadway\Proj\A-0009CC_Plan
X:\Projects\A-0009\Roadway\Proj\A-0009CC_Plan