

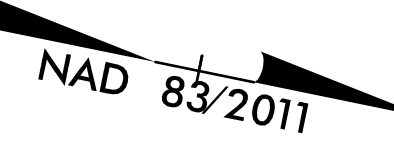
PROJECT REFERENCE NO. A-0009CC	SHEET NO. 36
RW SHEET NO.	
ROADWAY DESIGN JIMMY L. TERRY 35018 10/18/2022	HYDRAULICS ENGINEER DAVID B. PETTY 038697 10/18/2022
DOCUMENT NOT CONSIDERED FINAL UNLESS ALL SIGNATURES COMPLETED	
TGS ENGINEERS 201 W. MARION ST SHELBY, NC 28150 PH (704) 476-0003 CORP. LICENSE NO.: C-0275	

-L- CURVE DATA

PI Sta 434+01.05	PI Sta 440+11.67
$\Delta = 75^{\circ} 56' 44.8" (LT)$	$\Delta = 26^{\circ} 10' 50.5" (RT)$
$D = 12' 43' 56.6"$	$D = 8' 48' 53.0"$
$L = 596.48'$	$L = 297.01'$
$T = 351.24'$	$T = 151.14'$
* $R = 450.00'$	$R = 650.00'$
$SE = 0.08$	$SE = 0.08$
$DS = 40 MPH$	$DS = 45 MPH$

NOTE:
ALL DRIVEWAYS ARE TO BE ASPHALT UNLESS OTHERWISE NOTED.
END LOCATION OF DRIVEWAY SHOWN ON PLANS REPRESENTS TIE-IN PER CROSS-SECTIONS, THE CONTRACTOR SHALL EXTEND THE DRIVES AND PAVE UP TO THE RIGHT OF WAY LINE FROM ROW POINT ON MATCH DRIVEWAY IN KIND, UNLESS OTHERWISE NOTED.

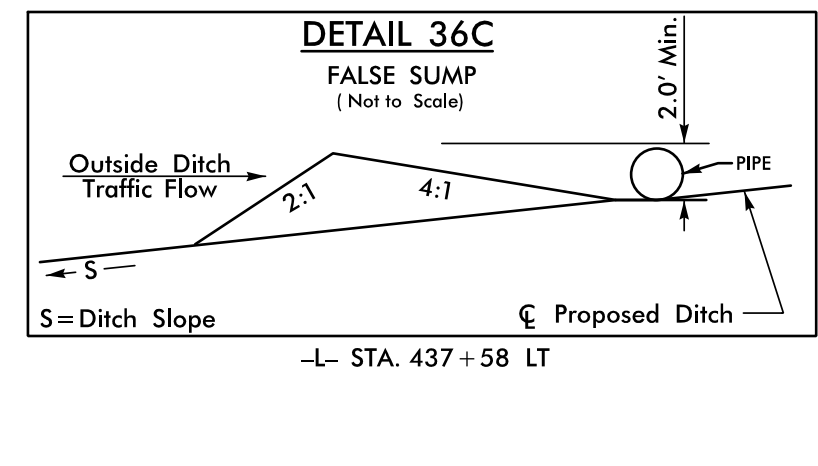
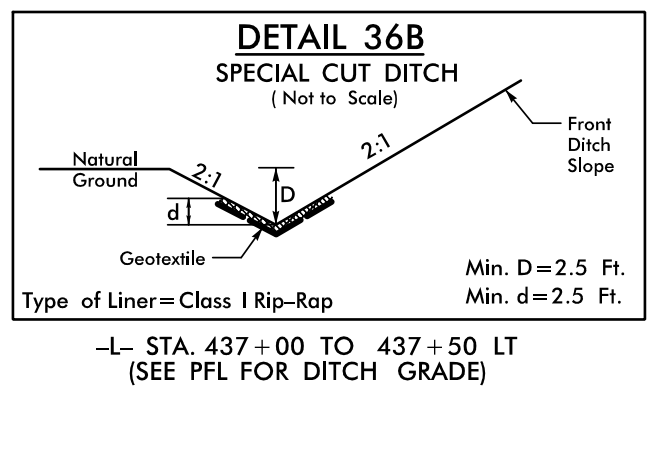
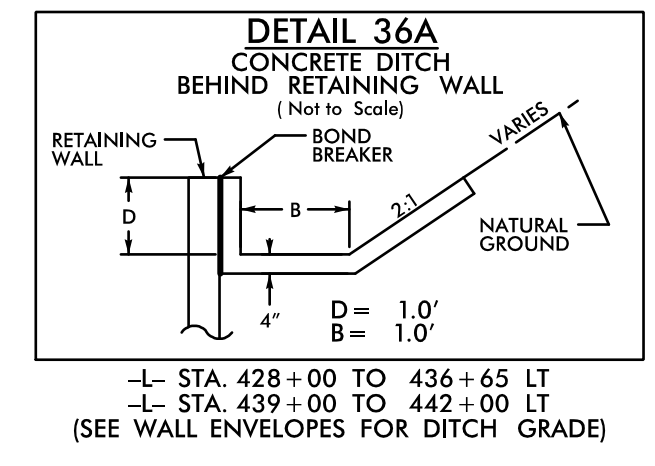
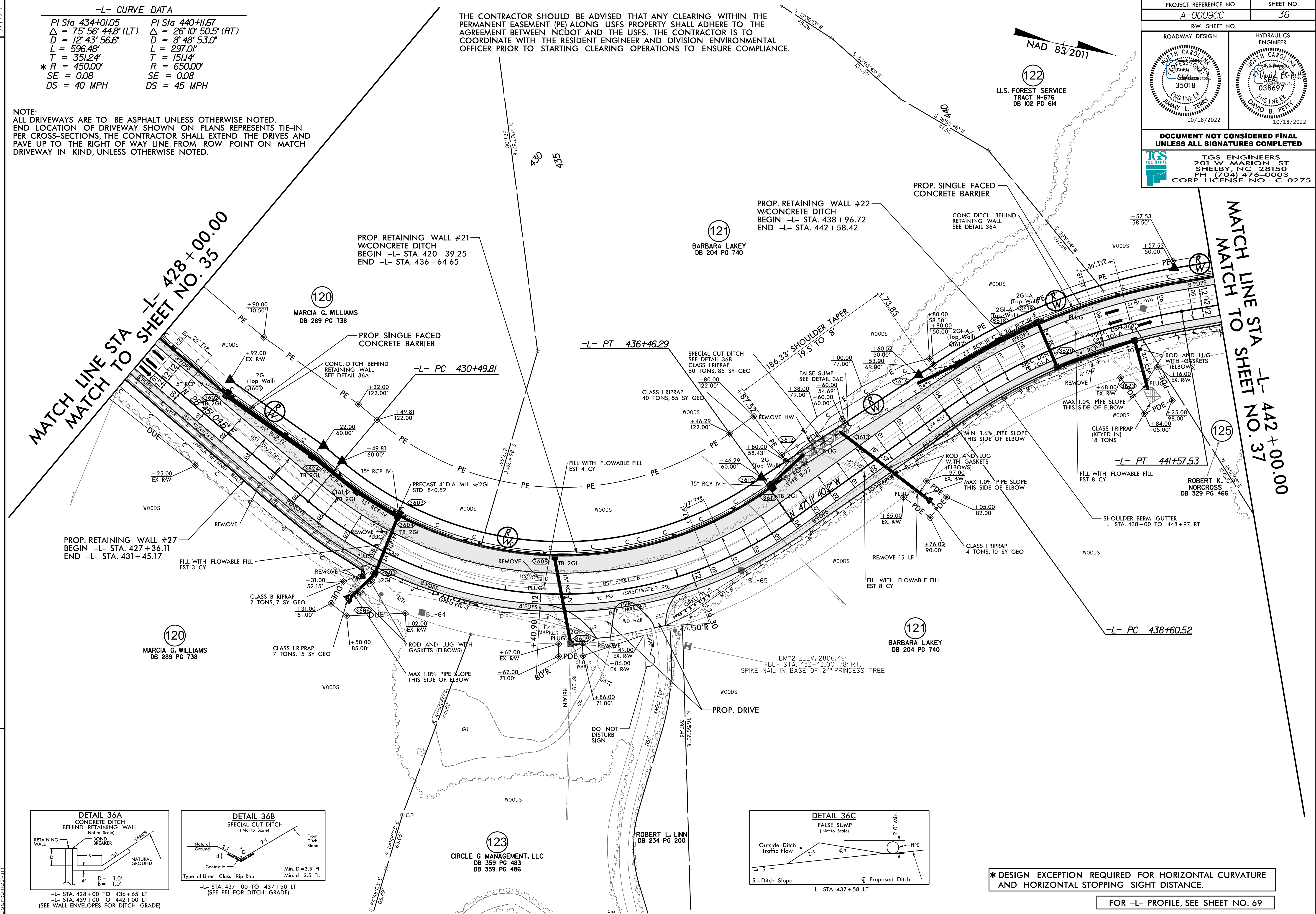
THE CONTRACTOR SHOULD BE ADVISED THAT ANY CLEARING WITHIN THE PERMANENT EASEMENT (PE) ALONG USFS PROPERTY SHALL ADHERE TO THE AGREEMENT BETWEEN NCDOT AND THE USFS. THE CONTRACTOR IS TO COORDINATE WITH THE RESIDENT ENGINEER AND DIVISION ENVIRONMENTAL OFFICER PRIOR TO STARTING CLEARING OPERATIONS TO ENSURE COMPLIANCE.



122
U.S. FOREST SERVICE
TRACT N-676
DB 102 PG 614

MATCH LINE STA -L- 428+00.00
MATCH TO SHEET NO. 35

MATCH LINE STA -L- 442+00.00
MATCH TO SHEET NO. 37



* DESIGN EXCEPTION REQUIRED FOR HORIZONTAL CURVATURE AND HORIZONTAL STOPPING SIGHT DISTANCE.

FOR -L- PROFILE, SEE SHEET NO. 69

8/17/2022
 X:\NC009\Roadway\Proj\A-0009CC_Plan
 Sheets\A-0009CC_Rdy_psh_36.dgn
 I:\Users\mld\

123
CIRCLE G MANAGEMENT, LLC
DB 359 PG 483
DB 359 PG 486

121
BARBARA LAKEY
DB 204 PG 740

120
MARCIA G. WILLIAMS
DB 289 PG 738

125
ROBERT K. NORCROSS
DB 329 PG 466