

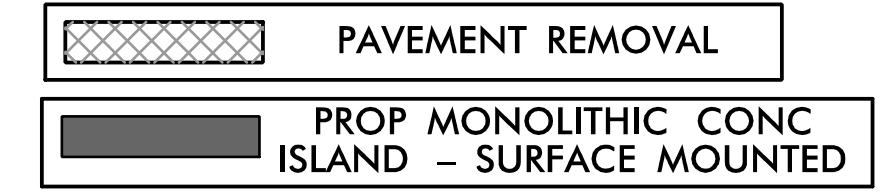
8/17/2011

**-L- CURVE DATA**  
 PI Sta 419+44.60  
 $\Delta = 56^\circ 20' 44.5"$  (LT)  
 $D = 9^\circ 32' 57.5"$   
 $L = 590.05'$   
 $T = 321.35'$   
 $R = 600.00'$   
 $DS = 45$  MPH  
 $SE = 0.08$

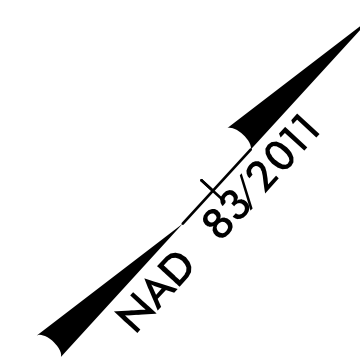
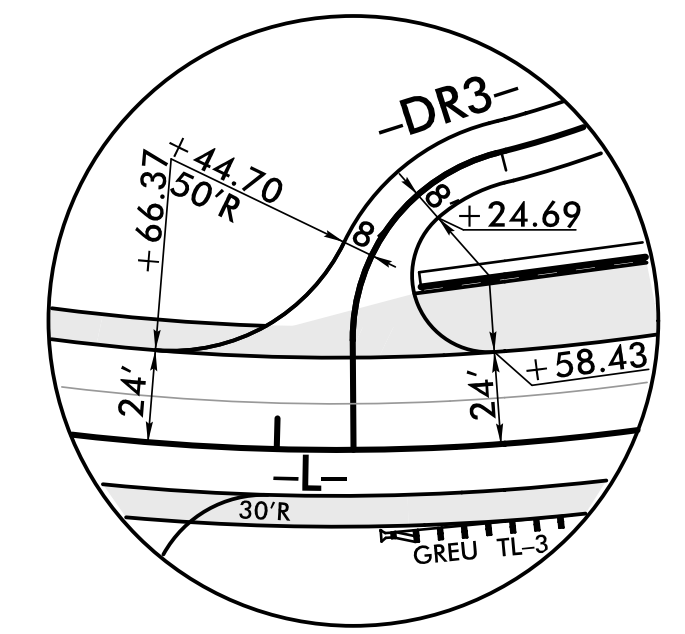
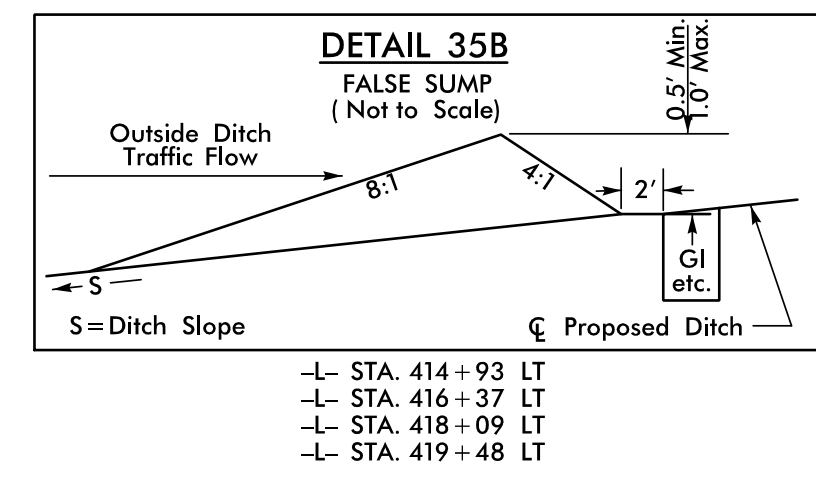
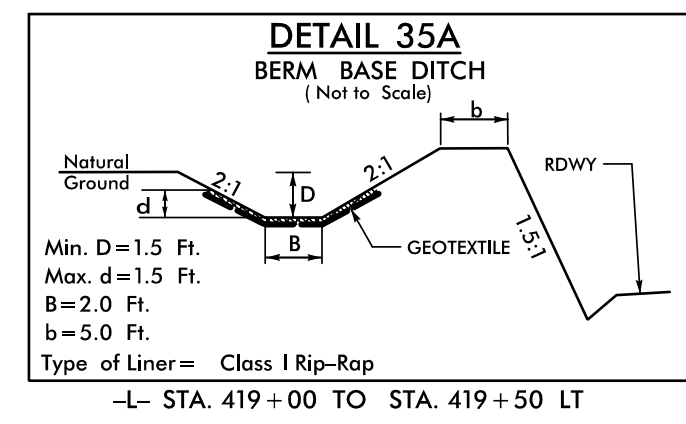
**-DR3- CURVE DATA**  
 PI Sta 10+68.68  
 $\Delta = 13^\circ 52' 12.2"$  (RT)  
 $D = 22^\circ 55' 05.9"$   
 $L = 60.52'$   
 $T = 30.41'$   
 $R = 250.00'$   
 $SE = \text{SEE PLANS}$

PI Sta 11+40.26  
 $\Delta = 75^\circ 57' 23.4"$  (LT)  
 $D = 11^\circ 35' 29.6"$   
 $L = 66.28'$   
 $T = 39.03'$   
 $R = 50.00'$   
 $SE = \text{SEE PLANS}$

- S 33° 09' 58.9" W
- DR3- PC 11+01.23
- DR3- PT 11+67.51
- S 42° 47' 24.5" E



**NOTE:**  
 ALL DRIVEWAYS ARE TO BE ASPHALT UNLESS OTHERWISE NOTED. END LOCATION OF DRIVEWAY SHOWN ON PLANS REPRESENTS TIE-IN PER CROSS-SECTIONS, THE CONTRACTOR SHALL EXTEND THE DRIVES AND PAVE UP TO THE RIGHT OF WAY LINE. FROM ROW POINT ON MATCH DRIVEWAY IN KIND, UNLESS OTHERWISE NOTED.



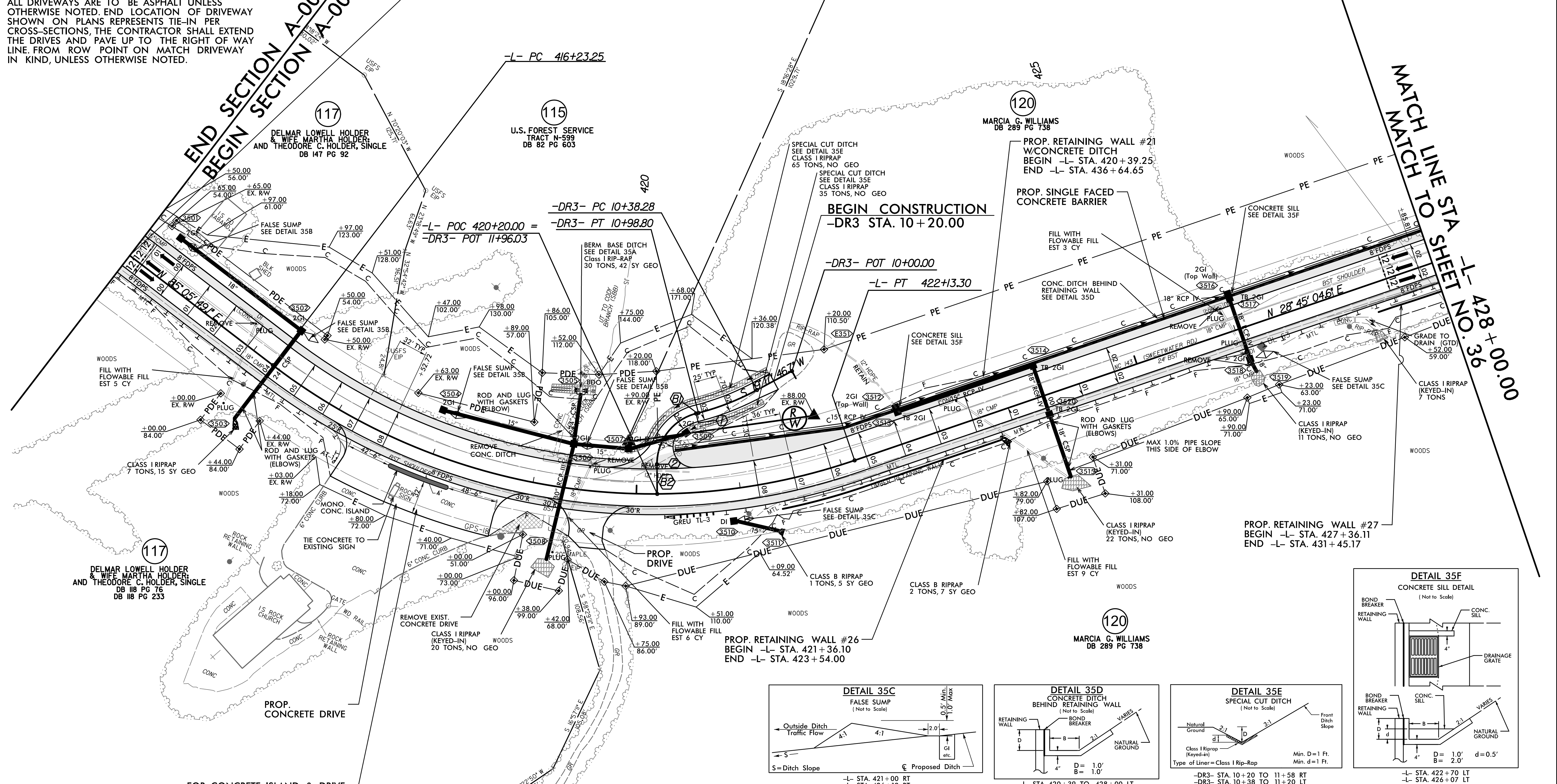
PROJECT REFERENCE NO. A-0009CC	SHEET NO. 35
ROADWAY DESIGN	HYDRAULICS ENGINEER
10/18/2022	10/18/2022

**DOCUMENT NOT CONSIDERED FINAL UNLESS ALL SIGNATURES COMPLETED**

**TGS ENGINEERS**  
 201 W. MARION ST  
 SHELBY, NC 28150  
 PH: (704) 476-0003  
 CORP. LICENSE NO.: C-0275

THE CONTRACTOR SHOULD BE ADVISED THAT ANY CLEARING WITHIN THE PERMANENT EASEMENT (PE) ALONG USFS PROPERTY SHALL ADHERE TO THE AGREEMENT BETWEEN NCDOT AND THE USFS. THE CONTRACTOR IS TO COORDINATE WITH THE RESIDENT ENGINEER AND DIVISION ENVIRONMENTAL OFFICER PRIOR TO STARTING CLEARING OPERATIONS TO ENSURE COMPLIANCE.

**BEGIN TIP PROJECT A-0009CC**  
 -L- STA. 414 + 50.00



X:\K000000\Roadway\Proj\A-0009CC\_Plan\_Sheets\A-0009CC\_Rdy\_psh\_35.dgn  
 10/17/2012 10:02:00 AM  
 User: jstallard