

**This electronic collection of documents is provided
for the convenience of the user
and is Not a Certified Document –**

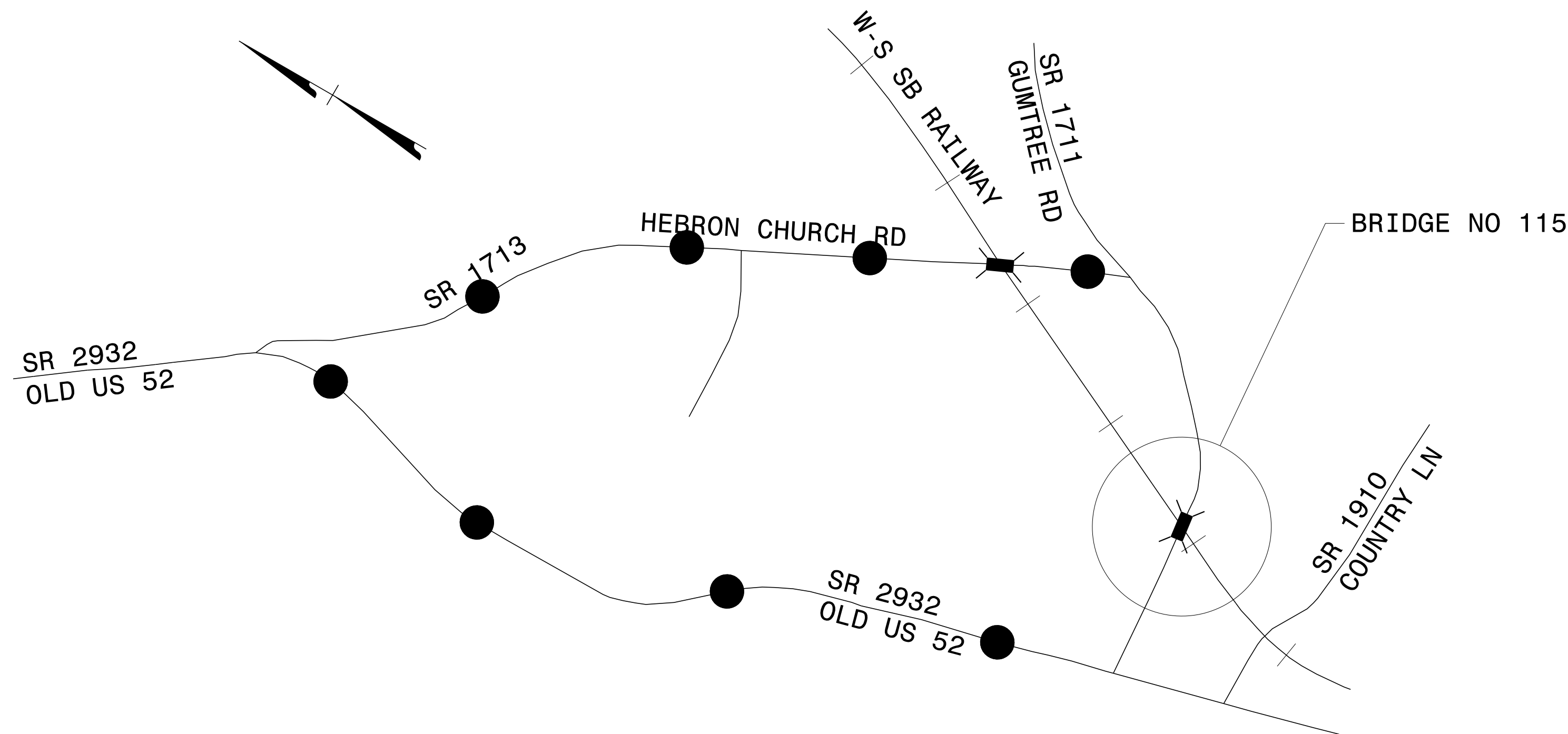
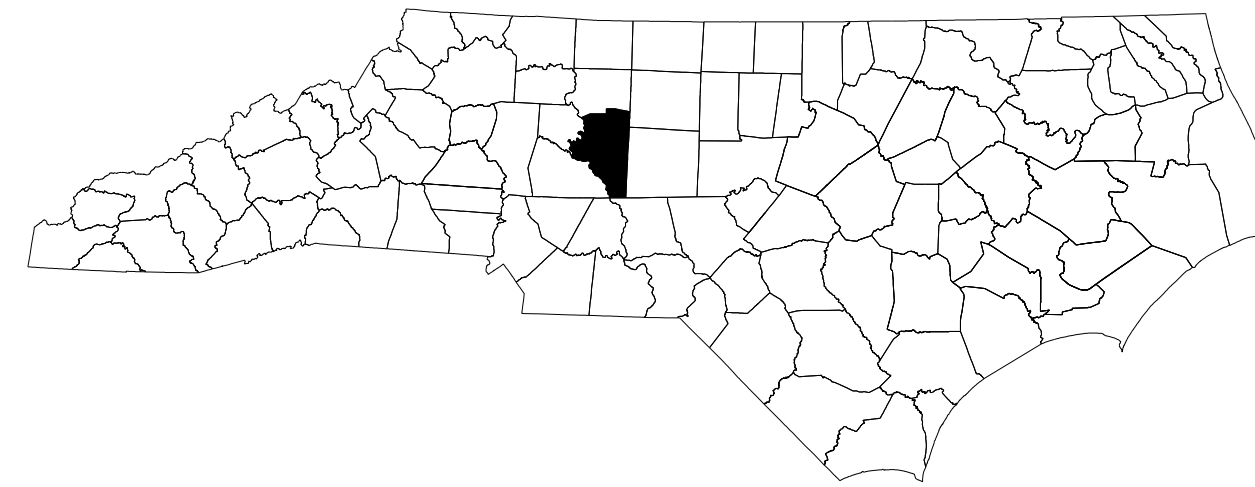
**The documents contained herein were originally issued
and sealed by the individuals whose names and license
numbers appear on each page, on the dates appearing
with their signature on that page.**

**This file or an individual page
shall not be considered a certified document.**

STATE OF NORTH CAROLINA
DIVISION OF HIGHWAYS

TRANSPORTATION MANAGEMENT PLAN

DAVIDSON COUNTY



LOCATION

REPLACE BRIDGE NO 115 ON SR 1711 (GUMTREE RD) OVER WINSTON-SALEM SOUTHBOUND RAILROAD

TYPE OF WORK

GRADING, DRAINAGE, PAVING AND STRUCTURE

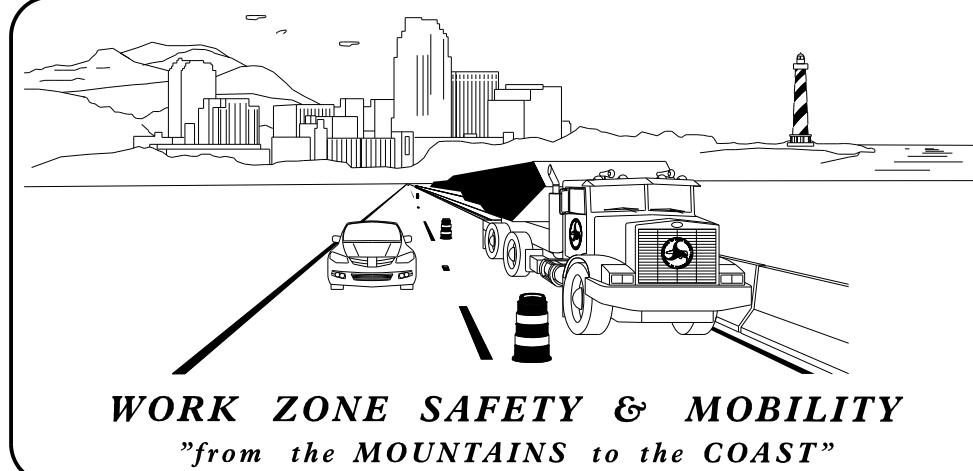
<u>INDEX OF SHEETS</u>	
<u>SHEET NO.</u>	<u>TITLE</u>
TMP-1	TITLE SHEET, VICINITY MAP, AND INDEX OF SHEETS
TMP-1A	LIST OF APPLICABLE ROADWAY STANDARD DRAWINGS AND LEGEND
TMP-1B	TRANSPORTATION OPERATIONS PLAN: (GENERAL NOTES)
TMP-1C	TRANSPORTATION OPERATIONS PLAN: (PHASING, LOCAL NOTES, AND MANAGEMENT STRATEGIES)
TMP-2	SPECIAL SIGN DESIGN
TMP-3	OFF SITE DETOUR ROUTE

SHEET NO.
TMP-1

B-5765

TIP PROJECT:

5/3/2021 P:\TIP\Projects-B\B5765\TrafficControl\TCP\B5765_TC_TMP01.tittle sheet.dgn User:rmsfeelman



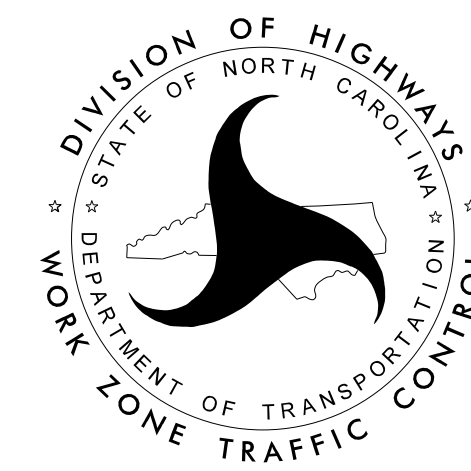
PLANS PREPARED BY:

WZTC-NCDOT

NCDOT CONTACTS:

KENNETH THORNEWELL, PE
PROJECT ENGINEER

MICHAEL STEELMAN
PROJECT DESIGN ENGINEER

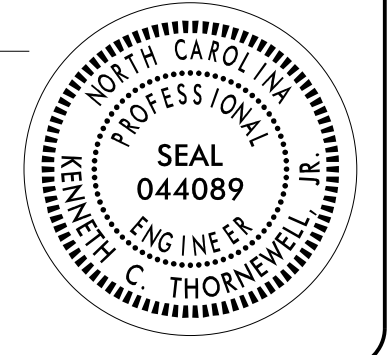


**DOCUMENT NOT CONSIDERED FINAL
UNLESS ALL SIGNATURES COMPLETED**

APPROVED: *Kenneth C. Thornevell, Jr., P.E.*
1E691EF27373405

DATE: 5/4/2021

SEAL



ROADWAY STANDARD DRAWINGS

THE FOLLOWING ROADWAY STANDARDS AS SHOWN IN "ROADWAY STANDARD DRAWINGS" - PROJECT SERVICES UNIT - N.C. DEPARTMENT OF TRANSPORTATION - RALEIGH, N.C., DATED JANUARY 2018 ARE APPLICABLE TO THIS PROJECT AND BY REFERENCE HEREBY ARE CONSIDERED A PART OF THESE PLANS:

STD. NO.	TITLE
1101.01	WORK ZONE WARNING SIGNS
1101.02	TEMPORARY LANE CLOSURES
1101.03	TEMPORARY ROAD CLOSURES
1101.04	TEMPORARY SHOULDER CLOSURES
1101.05	WORK ZONE VEHICLE ACCESSES
1101.06	WARNING SIGNS FOR BLASTING ZONES
1101.11	TRAFFIC CONTROL DESIGN TABLES
1110.01	STATIONARY WORK ZONE SIGNS
1110.02	PORTABLE WORK ZONE SIGNS
1115.01	FLASHING ARROW BOARDS
1130.01	DRUMS
1135.01	CONES
1145.01	BARRICADES
1150.01	FLAGGING DEVICES
1160.01	TEMPORARY CRASH CUSHION
1165.01	TRUCK MOUNTED ATTENUATOR
1170.01	PORTABLE CONCRETE BARRIER
1180.01	SKINNY - DRUMS
1205.01	PAVEMENT MARKINGS - LINE TYPES AND OFFSETS
1205.02	PAVEMENT MARKINGS - TWO LANE AND MULTILANE ROADWAYS
1205.03	PAVEMENT MARKINGS - EXITS AND ENTRANCE RAMP
1205.04	PAVEMENT MARKINGS - INTERSECTIONS
1205.05	PAVEMENT MARKINGS - TURN LANES
1205.06	PAVEMENT MARKINGS - LANE DROPS
1205.07	PAVEMENT MARKINGS - PEDESTRIAN CROSSWALKS
1205.08	PAVEMENT MARKINGS - SYMBOLS AND WORD MESSAGES
1205.09	PAVEMENT MARKINGS - PAINTED ISLANDS
1205.10	PAVEMENT MARKINGS - SCHOOL AREAS
1205.11	PAVEMENT MARKINGS - RAILROAD CROSSINGS
1205.12	PAVEMENT MARKINGS - BRIDGES
1205.13	PAVEMENT MARKINGS - LANE REDUCTIONS
1205.14	PAVEMENT MARKINGS - ROUNDABOUTS
1205.15	PAVEMENT MARKINGS - SUPERSTREETS
1250.01	RAISED PAVEMENT MARKERS - INSTALLATION SPACING
1251.01	RAISED PAVEMENT MARKERS - (PERMANENT AND TEMPORARY)
1261.01	GUARDRAIL AND BARRIER DELINEATORS - INSTALLATION SPACING
1261.02	GUARDRAIL AND BARRIER DELINEATORS - TYPES AND MOUNTING
1262.01	GUARDRAIL END DELINEATION
1264.01	OBJECT MARKERS - TYPES
1264.02	OBJECT MARKERS - INSTALLATION

LEGEND

GENERAL

- DIRECTION OF TRAFFIC FLOW
- DIRECTION OF PEDESTRIAN TRAFFIC FLOW
- EXIST. PVMT.
- NORTH ARROW
- PROPOSED PVMT.
- TEMP. SHORING (LOCATION PURPOSES ONLY)

- WORK AREA
- REMOVAL

SIGNALS

- EXISTING
- PROPOSED
- TEMPORARY

PAVEMENT MARKINGS

- EXISTING LINES
- TEMPORARY LINES

TRAFFIC CONTROL DEVICES

- BARRICADE (TYPE III)
- CONE
- DRUM
- SKINNY DRUM
- TUBULAR MARKER
- TEMPORARY CRASH CUSHION
- FLASHING ARROW BOARD
- FLAGGER
- LAW ENFORCEMENT
- TRUCK MOUNTED ATTENUATOR (TMA)
- CHANGEABLE MESSAGE SIGN

TEMPORARY SIGNING

- PORTABLE SIGN
- STATIONARY SIGN
- STATIONARY OR PORTABLE SIGN

PAVEMENT MARKERS

- CRYSTAL/CRYSTAL
- CRYSTAL/RED
- YELLOW/YELLOW

PAVEMENT MARKING SYMBOLS

- PAVEMENT MARKING SYMBOLS

TEMPORARY PAVEMENT MARKINGS

- TEMPORARY PAINT PAVEMENT MARKINGS (4 INCH)
- WHITE EDGELINE
 - WHITE MINI-SKIPS
 - DOUBLE YELLOW EDGELINE

4/5/2022 P:\Projects\B5765\TrafficControl\TCP\B5765_TC_TMP01A Legend.dgn User:msfeelman

APPROVED: <i>Kenneth C. Thornwell, Jr., P.E.</i> <small>1E991EF27373405...</small> DATE: 04/05/2022			<h3>ROADWAY STANDARD DRAWINGS & LEGEND</h3>
DOCUMENT NOT CONSIDERED FINAL UNLESS ALL SIGNATURES COMPLETED			

GENERAL NOTES

CHANGES MAY BE REQUIRED WHEN PHYSICAL DIMENSIONS IN THE DETAIL DRAWINGS, STANDARD DETAILS, AND ROADWAY DETAILS ARE NOT ATTAINABLE TO MEET FIELD CONDITIONS OR RESULT IN DUPLICATE OR UNDESIRABLE OVERLAPPING OF DEVICES. MODIFICATION MAY INCLUDE: MOVING, SUPPLEMENTING, COVERING, OR REMOVAL OF DEVICES AS DIRECTED BY THE ENGINEER.

THE FOLLOWING GENERAL NOTES APPLY AT ALL TIMES FOR THE DURATION OF THE CONSTRUCTION PROJECT EXCEPT WHEN OTHERWISE NOTED IN THE PLAN OR DIRECTED BY THE ENGINEER.

LANE AND SHOULDER CLOSURE REQUIREMENTS

- A) REMOVE LANE CLOSURE DEVICES FROM THE LANE WHEN WORK IS NOT BEING PERFORMED BEHIND THE LANE CLOSURE OR WHEN A LANE CLOSURE IS NO LONGER NEEDED OR AS DIRECTED BY THE ENGINEER.
- B) WHEN PERSONNEL AND/OR EQUIPMENT ARE WORKING WITHIN 15 FT OF AN OPEN TRAVEL LANE, CLOSE THE NEAREST OPEN SHOULDER USING ROADWAY STANDARD DRAWING NO. 1101.04 UNLESS THE WORK AREA IS PROTECTED BY BARRIER OR GUARDRAIL OR A LANE CLOSURE IS INSTALLED.
- C) WHEN PERSONNEL AND/OR EQUIPMENT ARE WORKING ON THE SHOULDER ADJACENT TO AN UNDIVIDED FACILITY AND WITHIN 5 FT OF AN OPEN TRAVEL LANE, CLOSE THE NEAREST OPEN TRAVEL LANE USING ROADWAY STANDARD DRAWING NO. 1101.02 UNLESS THE WORK AREA IS PROTECTED BY BARRIER OR GUARDRAIL.

WHEN PERSONNEL AND/OR EQUIPMENT ARE WORKING ON THE SHOULDER ADJACENT TO A DIVIDED FACILITY AND WITHIN 10 FT OF AN OPEN TRAVEL LANE, CLOSE THE NEAREST OPEN TRAVEL LANE USING ROADWAY STANDARD DRAWING NO. 1101.02 UNLESS THE WORK AREA IS PROTECTED BY BARRIER OR GUARDRAIL.

- D) WHEN PERSONNEL AND/OR EQUIPMENT ARE WORKING WITHIN A LANE OF TRAVEL OF AN UNDIVIDED OR DIVIDED FACILITY, CLOSE THE LANE ACCORDING TO THE TRAFFIC CONTROL PLANS, ROADWAY STANDARD DRAWINGS, OR AS DIRECTED BY THE ENGINEER. CONDUCT THE WORK SO THAT ALL PERSONNEL AND/OR EQUIPMENT REMAIN WITHIN THE CLOSED TRAVEL LANE.
- E) DO NOT WORK SIMULTANEOUSLY WITHIN 15 FT ON BOTH SIDES OF AN OPEN TRAVELWAY, RAMP, OR LOOP WITHIN THE SAME LOCATION UNLESS PROTECTED WITH GUARDRAIL OR BARRIER.

PAVEMENT EDGE DROP OFF REQUIREMENTS

- F) BACKFILL AT A 6:1 SLOPE UP TO THE EDGE AND ELEVATION OF EXISTING PAVEMENT IN AREAS ADJACENT TO AN OPENED TRAVEL LANE THAT HAS AN EDGE OF PAVEMENT DROP-OFF AS FOLLOWS:
 - BACKFILL DROP-OFFS THAT EXCEED 2 INCHES ON ROADWAYS WITH POSTED SPEED LIMITS OF 45 MPH OR GREATER.
 - BACKFILL DROP-OFFS THAT EXCEED 3 INCHES ON ROADWAYS WITH POSTED SPEED LIMITS LESS THAN 45 MPH.
 - BACKFILL WITH SUITABLE COMPACTED MATERIAL, AS APPROVED BY THE ENGINEER, AT NO EXPENSE TO THE DEPARTMENT.
- G) DO NOT EXCEED A DIFFERENCE OF 2 INCHES IN ELEVATION BETWEEN OPEN LANES OF TRAFFIC FOR NOMINAL LIFTS OF 1.5 INCHES. INSTALL ADVANCE WARNING "UNEVEN LANES" SIGNS (W8-11) 500 FT IN ADVANCE AND A MINIMUM OF EVERY HALF MILE THROUGHOUT THE UNEVEN AREA.

TRAFFIC PATTERN ALTERATIONS

- H) NOTIFY THE ENGINEER THIRTY (30) CALENDAR DAYS PRIOR TO ANY TRAFFIC PATTERN ALTERATIONS.

SIGNING

- I) INSTALL ADVANCE WORK ZONE WARNING SIGNS WHEN WORK IS WITHIN 40 FT FROM THE EDGE OF TRAVEL LANE AND NO MORE THAN THREE (3) DAYS PRIOR TO THE BEGINNING OF CONSTRUCTION.
- J) PROVIDE SIGNING AND DEVICES REQUIRED TO CLOSE THE ROAD ACCORDING TO THE ROADWAY STANDARD DRAWINGS AND TRAFFIC CONTROL PLANS.
 - PROVIDE SIGNING REQUIRED FOR THE OFF-SITE DETOUR ROUTE AS SHOWN IN THE TRAFFIC CONTROL PLANS.
- K) COVER OR REMOVE ALL SIGNS AND DEVICES REQUIRED TO CLOSE THE ROAD WHEN ROAD CLOSURE IS NOT IN OPERATION.
 - COVER OR REMOVE ALL SIGNS REQUIRED FOR THE OFF-SITE DETOUR WHEN THE DETOUR IS NOT IN OPERATION.
- L) ENSURE ALL NECESSARY SIGNING IS IN PLACE PRIOR TO ALTERING ANY TRAFFIC PATTERN.

TRAFFIC CONTROL DEVICES

- M) WHEN LANE CLOSURES ARE NOT IN EFFECT SPACE CHANNELIZING DEVICES IN WORK AREAS NO GREATER IN FEET THAN TWICE THE POSTED SPEED LIMIT (MPH) EXCEPT, 10 FT ON-CENTER IN RADII, AND 3 FT OFF THE EDGE OF AN OPEN TRAVELWAY. REFER TO STANDARD SPECIFICATIONS FOR ROADS AND STRUCTURES SECTIONS 1130 (DRUMS), 1135 (CONES) AND 1180 (SKINNY DRUMS) FOR ADDITIONAL REQUIREMENTS.
- N) PLACE TYPE III BARRICADES WITH "ROAD CLOSED" SIGN R11-2 ATTACHED OF SUFFICIENT LENGTH TO CLOSE ENTIRE ROADWAY.

PAVEMENT MARKINGS AND MARKERS

- O) INSTALL TEMPORARY PAVEMENT MARKINGS AND TEMPORARY PAVEMENT MARKERS ON INTERIM LAYERS OF PAVEMENT AS FOLLOWS:

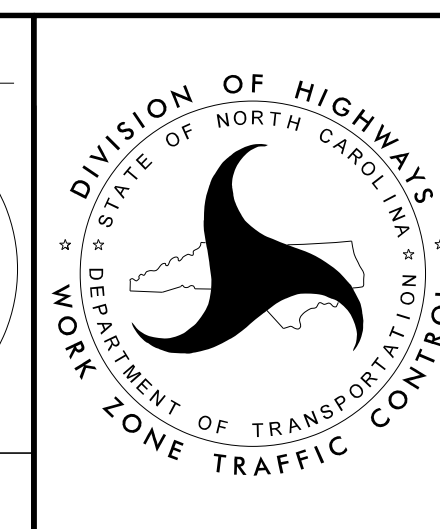
<u>ROAD NAME</u>	<u>MARKING</u>	<u>MARKER</u>
HEBRON CHURCH RD	PAINT	TEMP RAISED

- P) PLACE ONE APPLICATION OF PAINT FOR TEMPORARY TRAFFIC PATTERNS. PLACE A SECOND APPLICATION OF PAINT SIX (6) MONTHS AFTER THE INITIAL APPLICATION AND EVERY SIX MONTHS AS DIRECTED BY THE ENGINEER.
- Q) TIE PROPOSED PAVEMENT MARKING LINES TO EXISTING PAVEMENT MARKING LINES.
- R) REMOVE/REPLACE ANY CONFLICTING/DAMAGED PAVEMENT MARKINGS AND MARKERS BY THE END OF EACH DAY'S OPERATION.

5/3/2021
 P:\TIP\Projects-B\B5765\TrafficControl\TCP\B5765_TC_TMP01B_generalnotes.dgn
 User:msfeilman

DocuSigned by:
 APPROVED *Kenneth C. Thornwell Jr., P.E.*
 DATE: 5/4/2021

**DOCUMENT NOT CONSIDERED FINAL
UNLESS ALL SIGNATURES COMPLETED**



**TRANSPORTATION
OPERATIONS PLAN
(GENERAL NOTES)**

PHASING

NOTE: RSD = ROADWAY STANDARD DRAWINGS

STEP 1 - INSTALL WORK ZONE ADVANCE WARNING SIGNS. SEE RSD 1101.01.

STEP 2 - USING RSD 1101.02, SHEET 1 OF 14, CONSTRUCT -Y2- WIDENING AS SHOWN IN ROADWAY PLANS. PLACE TEMPORARY PAVEMENT MARKINGS OR FINAL PAVEMENT MARKINGS ON -Y2- IN THE FINAL PATTERN, AS DIRECTED BY THE ENGINEER.

- USING RSD 1101.02, SHEET 1 OF 14, CONSTRUCT -Y3- WIDENING AS SHOWN IN ROADWAY PLANS. PLACE TEMPORARY PAVEMENT MARKINGS OR FINAL PAVEMENT MARKINGS ON -Y3- IN THE FINAL PATTERN, AS DIRECTED BY THE ENGINEER.

- INSTALL AND COVER ROAD CLOSURE SIGNS AND DETOUR SIGNS FOR UPCOMING ROAD CLOSURE OF GUMTREE RD. (SR 1711) AS SHOWN ON TMP-3. (SEE RSD 1101.03, SHEET 1 OF 9).

STEP 3 - USING RSD 1101.03, SHEET 1 OF 9, AND TMP-3, UNCOVER DETOUR SIGNS AND ROAD CLOSURE SIGNS, AND CLOSE GUMTREE RD. (SR 1711) TO TRAFFIC AND PLACE TRAFFIC ON THE OFF-SITE DETOUR.

STEP 4 - AWAY FROM TRAFFIC, REMOVE EXISTING STRUCTURE.

STEP 5 - AWAY FROM TRAFFIC, CONSTRUCT PROPOSED STRUCTURE AND ROADWAY APPROACHES. (SEE ROADWAY AND STRUCTURE PLANS)

STEP 6 - AWAY FROM TRAFFIC, PLACE FINAL PAVEMENT MARKINGS AND MARKERS ON GUMTREE RD. (SR 1711) AS SHOWN IN THE FINAL PAVEMENT MARKING PLANS. USE RSD 1101.02, SHEET 1 OF 14, TO PLACE FINAL PAVEMENT MARKINGS AND MARKERS ON -Y2- AND -Y3- AS SHOWN IN THE FINAL PAVEMENT MARKING PLANS, IF NOT ALREADY COMPLETED IN STEP 2.

STEP 7 - REMOVE ALL WORK ZONE TRAFFIC CONTROL DEVICES AND OPEN GUMTREE RD (SR 1711) TO FINAL PATTERN.

MANAGEMENT STRATEGIES

- WIDEN INTERSECTIONS ALONG DETOUR ROUTE USING FLAGGERS

- FULL ROAD CLOSURE OF GUMTREE RD (SR 1711)

TRAFFIC TO BE MAINTAINED ON THE FOLLOWING DETOUR ROUTE:

HEBRON CHURCH ROAD (SR 1713)
OLD US 52 (SR 2932)

LOCAL NOTES

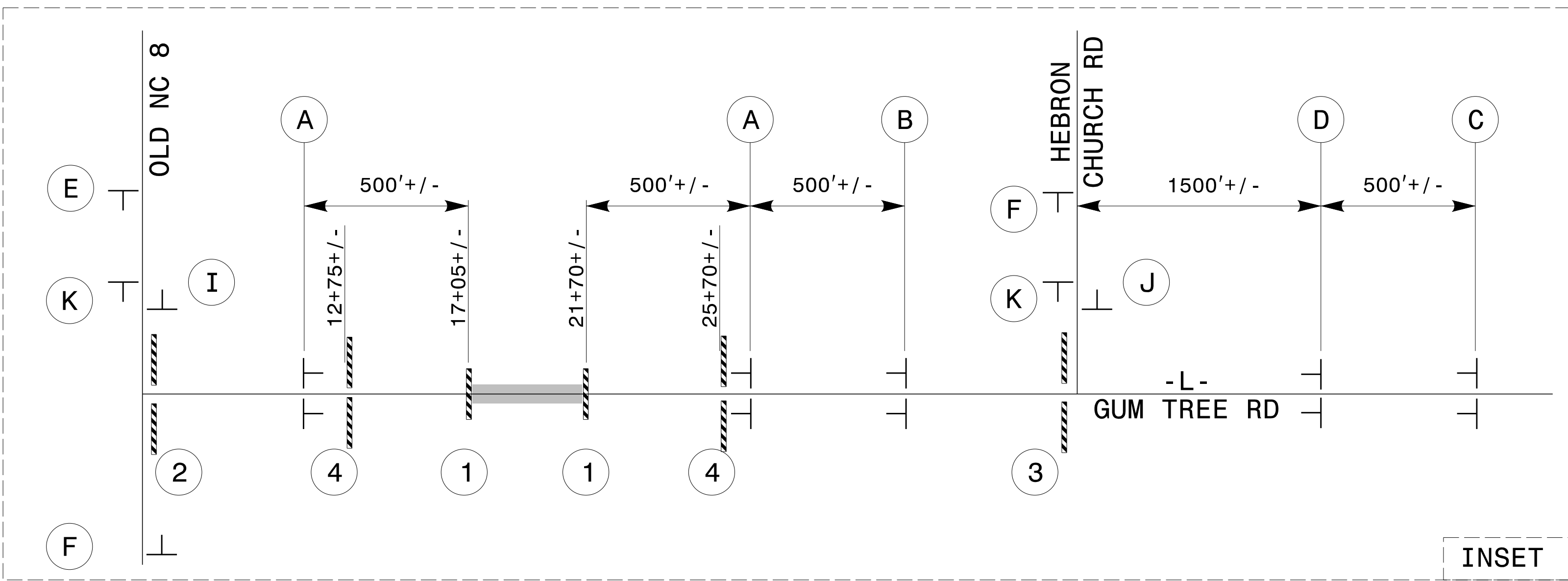
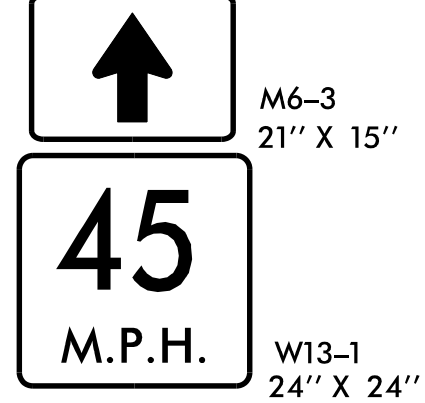
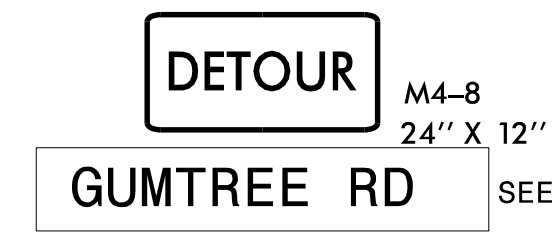
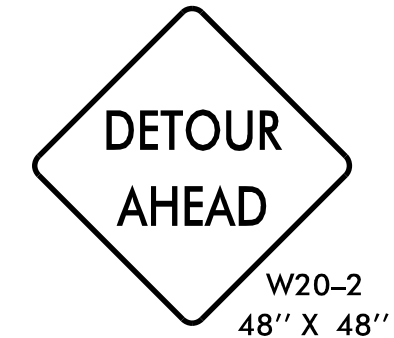
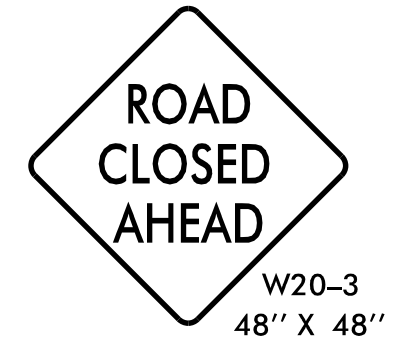
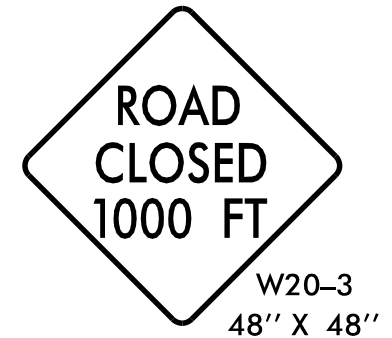
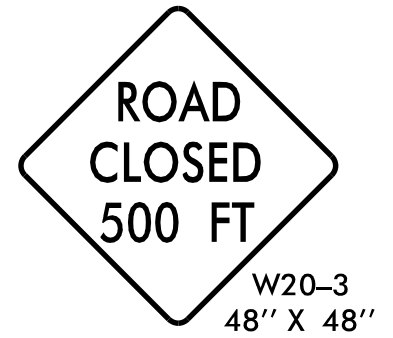
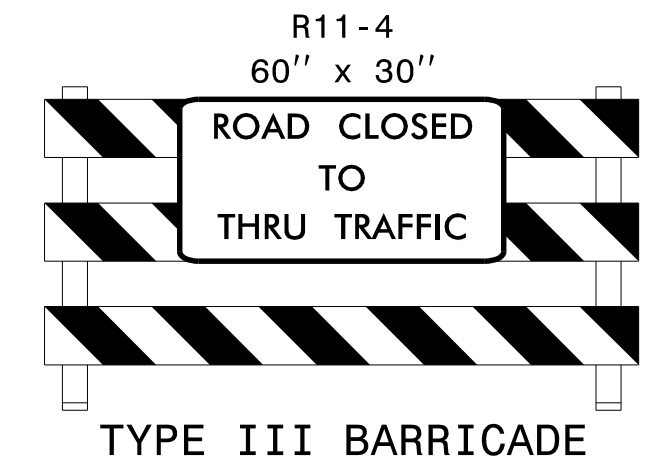
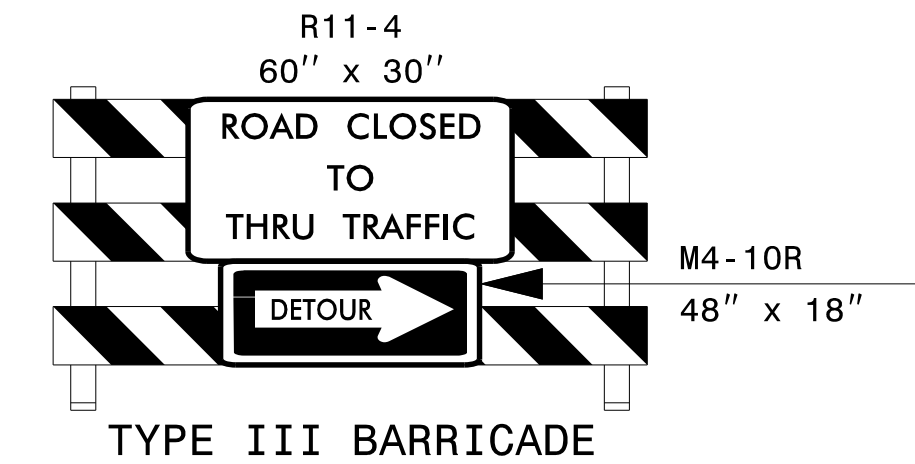
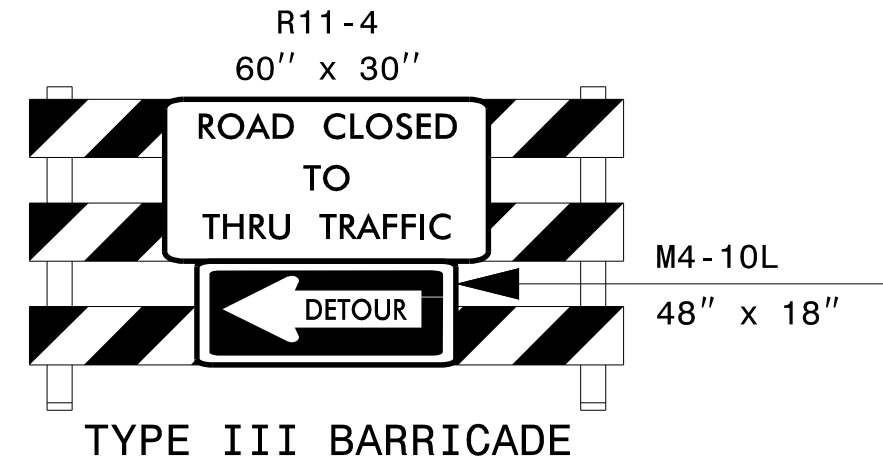
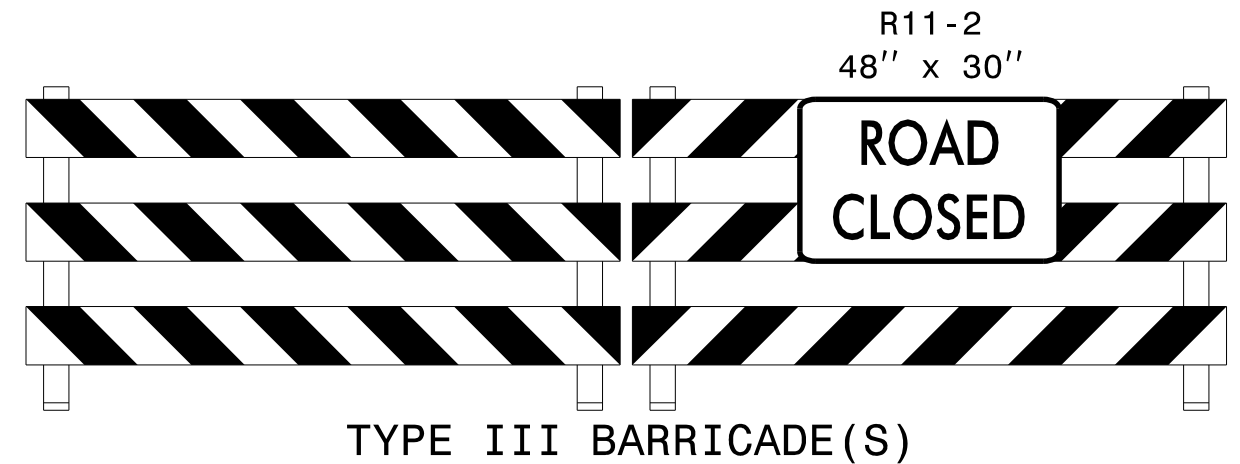
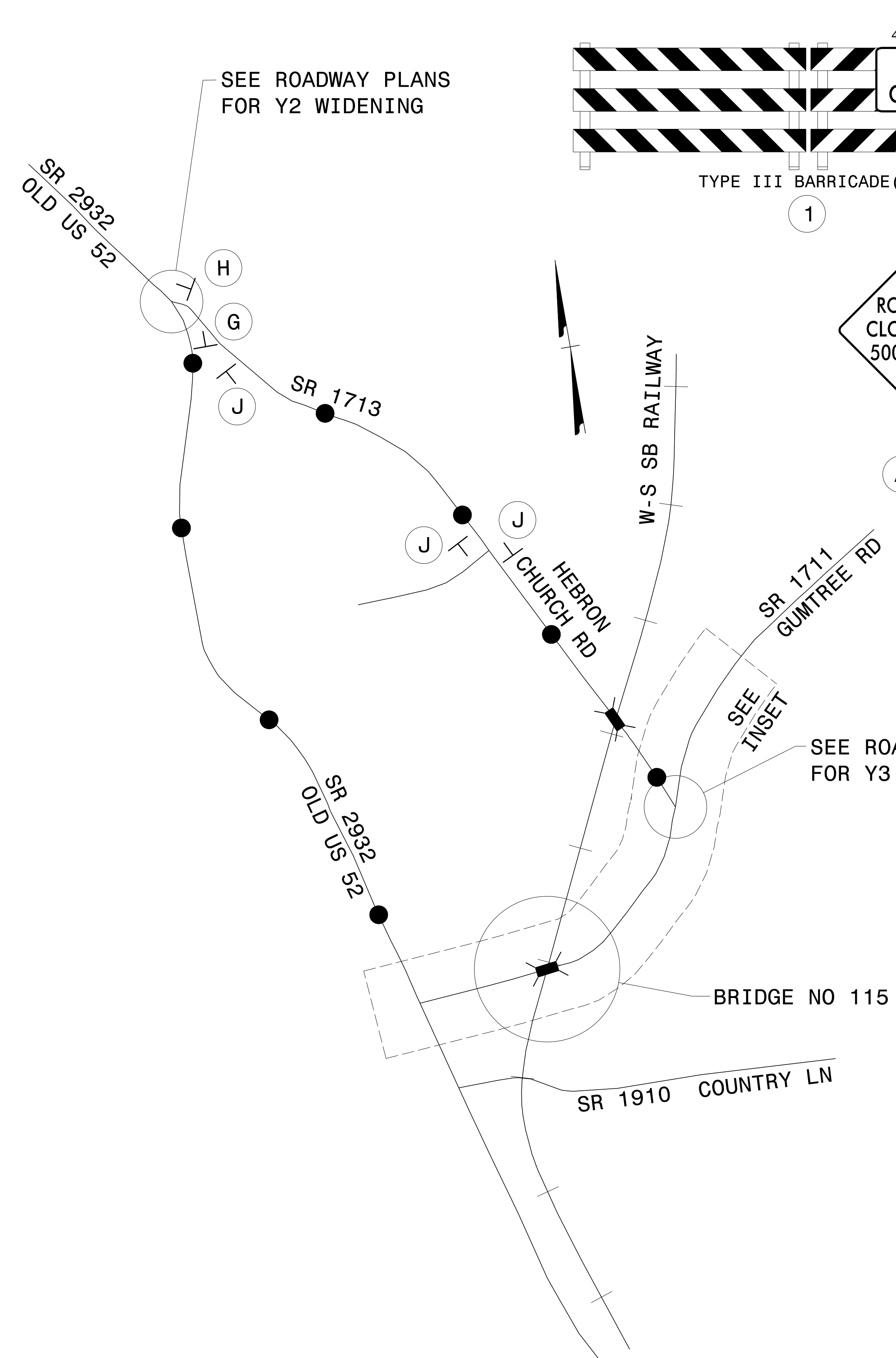
1- IN ORDER TO HAVE TIME TO ADEQUATELY REROUTE SCHOOL BUSES, THE DIVISION PROJECT MANAGER WILL CONTACT DAVIDSON COUNTY SCHOOL DISTRICT'S TRANSPORTATION MANAGER (336.249.8977) AT LEAST SIX (6) MONTHS PRIOR TO ROAD CLOSURE.

2- THE DIVISION PROJECT MANAGER WILL COORDINATE WITH THE FOLLOWING EMERGENCY MANAGEMENT OFFICIALS TO DISCUSS DETOUR PLANNING FOR EMERGENCY VEHICLES:

MIDWAY FIRE AND RESCUE (336.764.0920)
GUMTREE FIRE DEPARTMENT (336.788.3544)
DAVIDSON COUNTY EMS (336.242.2270)
DAVIDSON COUNTY SHERIFF'S OFFICE (336.242.2100)

3- IF DIVISION REQUIRES CLOSURE OF GUMTREE RD DURING THE MONTH OF NOVEMBER, THE DIVISION PROJECT MANAGER WILL COORDINATE WITH THE MIDWAY TOWN MANAGER (336.764.5455) TO DISCUSS POTENTIAL DETOUR PLANNING FOR THE ANNUAL MIDWAY CHRISTMAS PARADE.

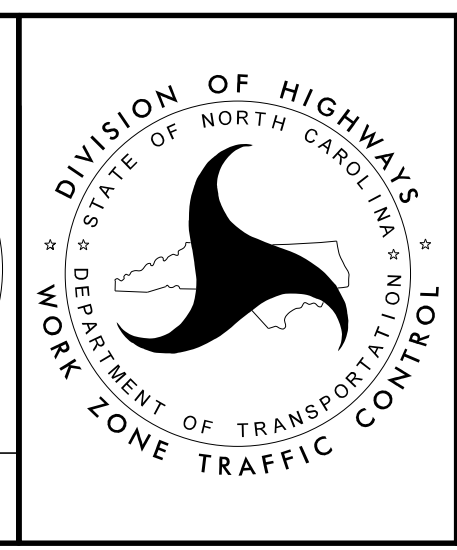
APPROVED <i>Kenneth C. Hornwell Jr., P.E.</i> <small>1E991EF27373405...</small> DATE: 5/4/2021		
TRANSPORTATION OPERATIONS PLAN (PHASING, LOCAL NOTES AND MANAGEMENT STRATEGIES)		
<small>DOCUMENT NOT CONSIDERED FINAL UNLESS ALL SIGNATURES COMPLETED</small>		



5/6/2022
 P:\TIP\Projects-B\B5765\Traffic\TrafficControl\TCP\B5765_TC_TMP03_detour.dgn
 User:msfeelman

APPROVED: *Ken Thornwell*
 DATE: 05/06/2022

DOCUMENT NOT CONSIDERED FINAL UNLESS ALL SIGNATURES COMPLETED



OFF SITE DETOUR ROUTE