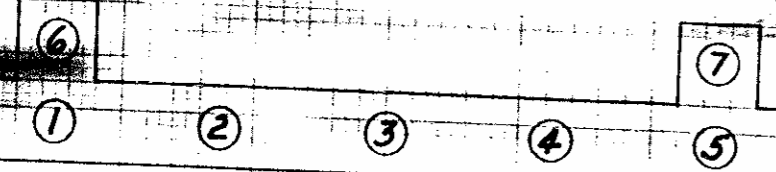


CREOSOTED TIMBER PILE DATA

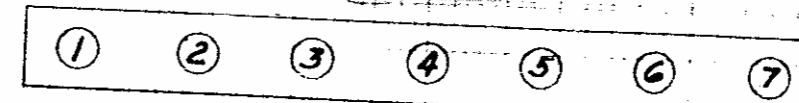
PROJECT 9-405
STA. 393+75

END BENT No 1



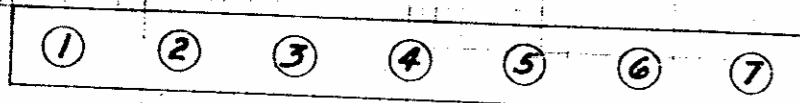
PILE No	LENGTH	CUT-OFF	NET LENGTH	PAY CUT OFF	AVG. PEN. LAST 5 BLOWS	DROP	BEARING
1	30'	0	30'	0	1.00"	12'	15.00
2	30'	0	30'	0	0.75"	12'	17.14
3	30'	3"	29'9"	0	0.62"	12'	18.50
4	30'	8'6"	21'6"	6'6"	0.50"	12'	20.00
5	30'	4"	29'8"	0	0.87"	12'	16.00
6	30'	0	30"	0	0.70"	12'	17.65
7	30'	8'9"	21'3"	6'9"	0.50"	12'	20.00
TOTAL	210'	17'10"	192'2"	13'3"			

INT BENT No 3



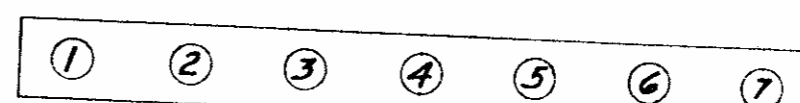
PILE No	LENGTH	CUT OFF	NET LENGTH	PAY CUT OFF	AVG. PEN. LAST 5 BLOWS	DROP	BEARING
1	40'	10"	39'2"	0	0.70"	12'	17.65
2	40'	3"	39'9"	0	1.12"	12'	16.50
3	40'	7"	39'5"	0	0.96"	12'	17.86
4	40'	6"	39'6"	0	0.83"	12'	16.40
5	40'	9"	39'3"	0	0.58"	12'	19.00
6	40'	1'5"	38'7"	0	0.66"	12'	18.00
7	40'	1'7"	38'5"	0	0.58"	12'	19.00
TOTAL	280'	5'11"	274'1"	0			

INT. BENT No 1



PILE No	LENGTH	CUTOFF	NET LENGTH	PAY CUT OFF	AVG. PEN. LAST 5 BLOWS	DROP	BEARING
1	40'	12'0"	28'	10'	0.50"	12'	20.00
2	40'	4"	39'8"	0	0.69"	12'	17.75
3	40'	0	40'	0	0.83"	12'	16.40
4	40'	1'0"	39'	0	0.83"	12'	16.40
5	40'	1'0"	39'	0	0.60"	12'	18.75
6	40'	2'9"	37'3"	9"	0.52"	12'	19.70
7	30'	7'6"	22'6"	5'6"	0.50"	12'	20.00
TOTAL	270'	24'7"	245'5"	16'3"			

INT. BENT No 4



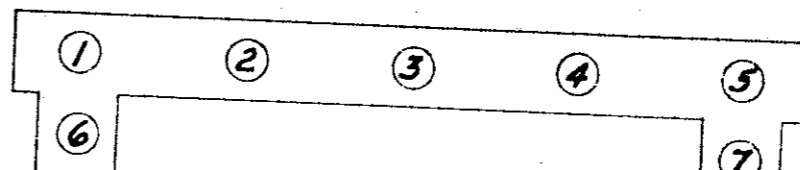
PILE No	LENGTH	CUT-OFF	NET LENGTH	PAY CUT OFF	AVG. PEN. LAST 5 BLOWS	DROP	BEARING
1	40'	1'0"	39'	0	0.62"	12'	18.50
2	40'	2'8"	37'4"	0'8"	0.62"	12'	18.50
3	40'	3'1"	36'11"	1'1"	0.65"	12'	18.20
4	40'	0'2"	39'10"	0	0.58"	12'	19.00
5	40'	0	40'	0	0.83"	12'	16.40
6	40'	0'8"	39'4"	0	0.58"	12'	19.00
7	40'	1'3"	38'9"	0	0.65"	12'	18.20
TOTAL	280'	8'10"	271'2"	1'9"			

INT. BENT No 2



PILE No	LENGTH	CUT-OFF	NET LENGTH	PAY CUT OFF	AVG. PEN. LAST 5 BLOWS	DROP	BEARING
1	40'	1'1"	38'11"	0	0.58"	12'	19.00
2	40'	9"	39'3"	0	0.50"	12'	20.00
3	40'	2"	39'10"	0	0.62"	12'	18.50
4	40'	6'3"	33'9"	4'3"	0.33"	12'	22.60
5	40'	0	40'	0	0.87"	12'	16.00
6	41'	1'11"	39'1"	0	0.30"	12'	23.00
7	40'	4"	39'8"	0	1.00"	12'	15.00
TOTAL	281'	10'6"	270'6"	4'3"			

END BENT No 2



PILE No	LENGTH	CUT-OFF	NET LENGTH	PAY CUT OFF	AVG. PEN. LAST 5 BLOWS	DROP	BEARING
1	40'	9'0"	31'0"	7'0"	0.46"	12'	20.50
2	40'	4'5"	35'7"	2'5"	0.52"	12'	19.70
3	40'	5'11"	34'1"	3'11"	0.40"	12'	21.40
4	40'	7'6"	32'6"	5'6"	0.57"	12'	19.10
5	40'	9'6"	30'6"	7'6"	0.62"	12'	18.50
6	40'	3'3"	36'9"	1'3"	0.50"	12'	20.00
7	40'	1'6"	38'6"	0	0.61"	12'	18.60
TOTAL	280'	41'1"	238'11"	27'7"			

See masonry book page 100-111

ORDER No.
9-692

EXTRA WORK
AMOUNT
\$383.91

EXPLANATION
HAD TO USE 40' PILES IN PLACE
OF 30' TO OBTAIN BEARING

TOTAL NET LENGTH - 1492'3"
TOTAL PAY CUT OFF - 63'1"