

**This electronic collection of documents is provided
for the convenience of the user
and is Not a Certified Document –**

**The documents contained herein were originally issued
and sealed by the individuals whose names and license
numbers appear on each page, on the dates appearing
with their signature on that page.**

**This file or an individual page
shall not be considered a certified document.**

K:\RAL_Roadway\01036333 - U-5724 (Central Heights)\Utilities\Engineering\U5724_uob_uo01.dgn

CONTRACT: C204540

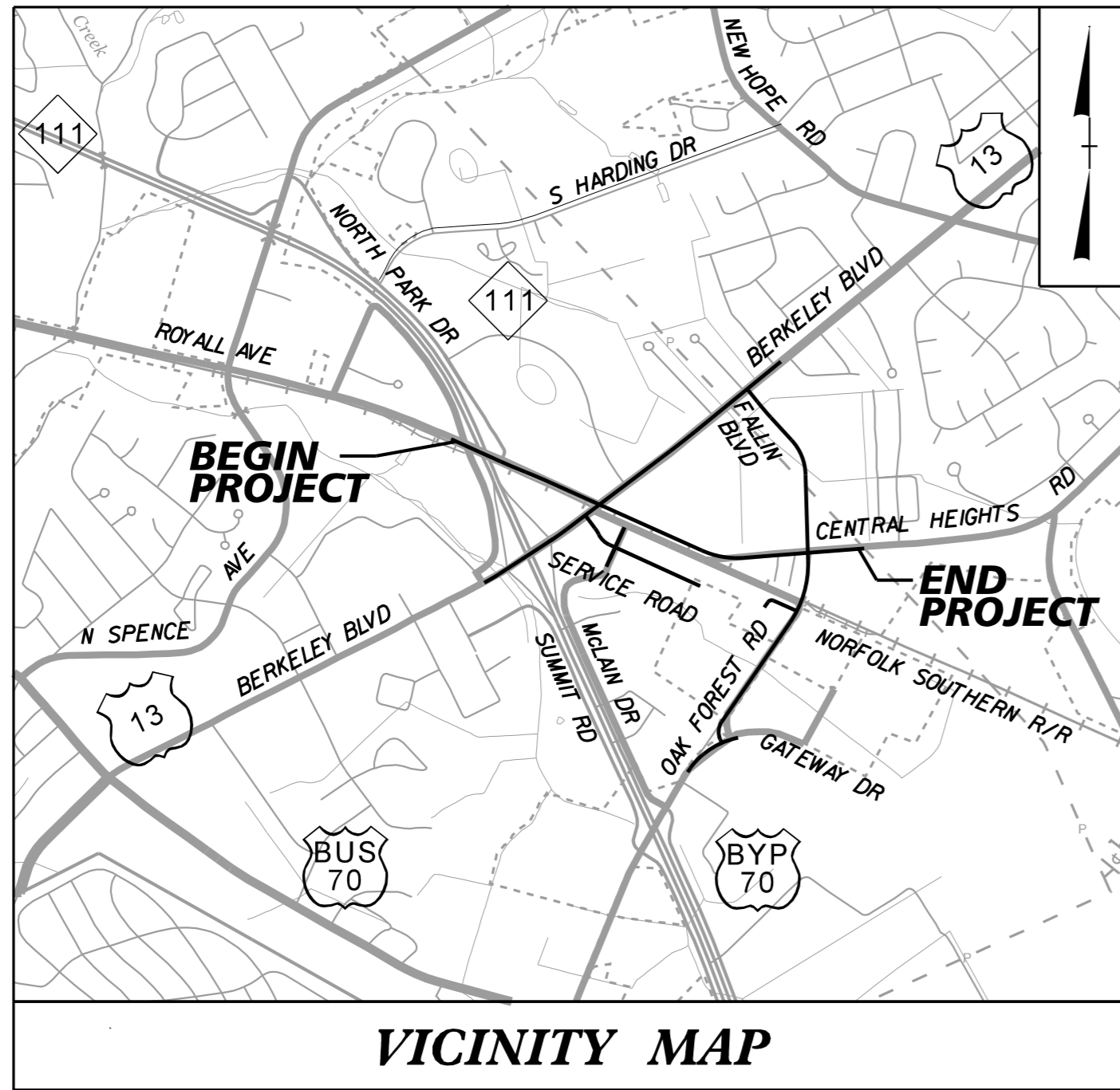
PROJECT: U-5724

STATE OF NORTH CAROLINA
DIVISION OF HIGHWAYS

**UTILITIES BY OTHERS PLANS
WAYNE COUNTY**

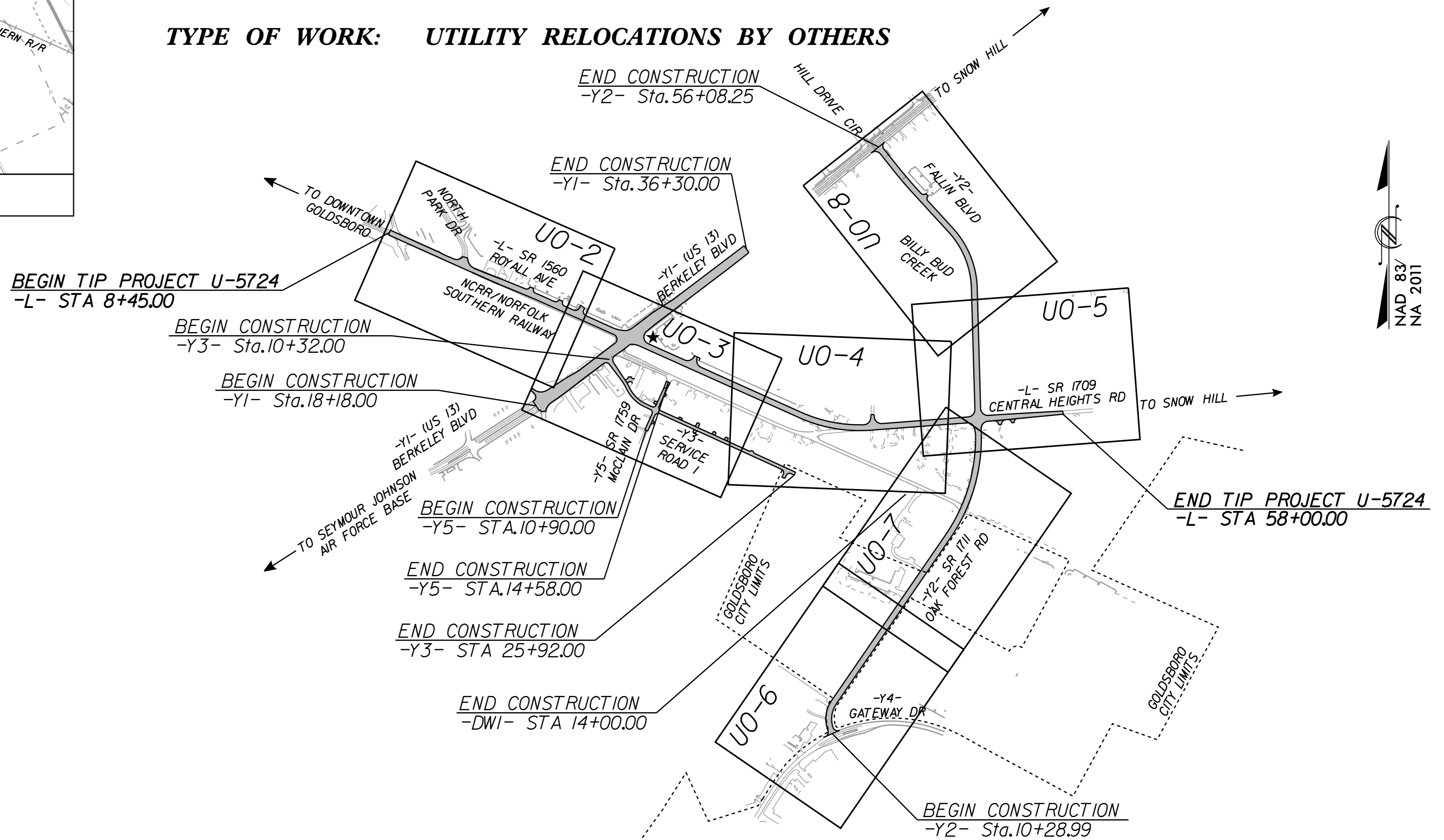
T.I.P. NO.	SHEET NO.
U-5724	UO-1

Kimley»Horn



LOCATION: SR 1560 (ROYALL AVENUE) FROM NORTH PARK DRIVE TO US 13 (BERKELEY BOULEVARD) AND SR 1709 (CENTRAL HEIGHTS ROAD) FROM US 13 (BERKELEY BOULEVARD) TO SR 1711 (OAK FOREST ROAD)

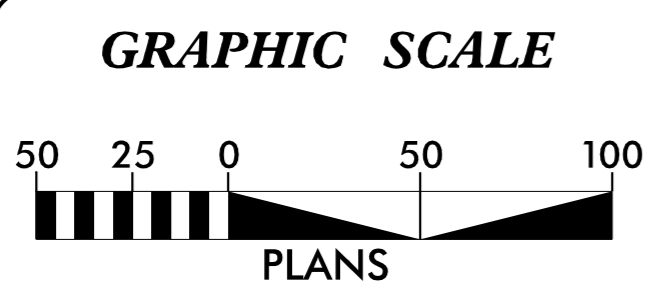
TYPE OF WORK: UTILITY RELOCATIONS BY OTHERS



NCDOT CONTACT: ADDISON GAINNEY
DIVISION 4, PROJECT ENGINEER
(252) 640-6428

★ TRAFFIC SIGNAL

DOCUMENT NOT CONSIDERED FINAL
UNLESS ALL SIGNATURES COMPLETED



INDEX OF SHEETS	
SHEET NO.	DESCRIPTION
UO-1	TITLE SHEET
UO-2 THRU UO-8	UTILITY BY OTHERS PLAN SHEETS

UTILITY OWNERS ON PROJECT	
(A) POWER - DUKE ENERGY PROGRESS (DISTRIBUTION):	ANDREW THOMAS 919-573-6777
(B) POWER - DUKE ENERGY PROGRESS (TRANSMISSION):	JACOB GARNER 919-546-6251
(C) TELECOMMUNICATIONS - AT&T:	DOCK POTTER 919-239-5813
(D) CATV - CHARTER-SPECTRUM:	CHRIS MINGLE 919-903-0160
(E) CATV - SEGRA:	DERICK FARRAR 803-616-2447
(F) GAS - PIEDMONT NATURAL GAS (DISTRIBUTION):	LINDA BYERS 919-222-9906
(G) GAS - PIEDMONT NATURAL GAS (TRANSMISSION):	BRANDON CULBERSON 919-302-4773
(H) TELECOMMUNICATIONS - CITY OF GOLDSBORO:	SCOTT WILLIAMS 919-580-4284
(I) TELECOMMUNICATIONS - CONTERRA:	MARK BROOKS 803-246-1136

PREPARED FOR OFFICE OF:
**DIVISION OF HIGHWAYS
UTILITIES UNIT
UTILITIES ENGINEERING**

1555 MAIL SERVICES CENTER
RALEIGH, NC 27699-1555
PHONE (919) 707-6690
FAX (919) 250-4151

BO HEMPHILL, P.E.

KYLE PLEASANT

EASTERN UTILITIES MANAGER

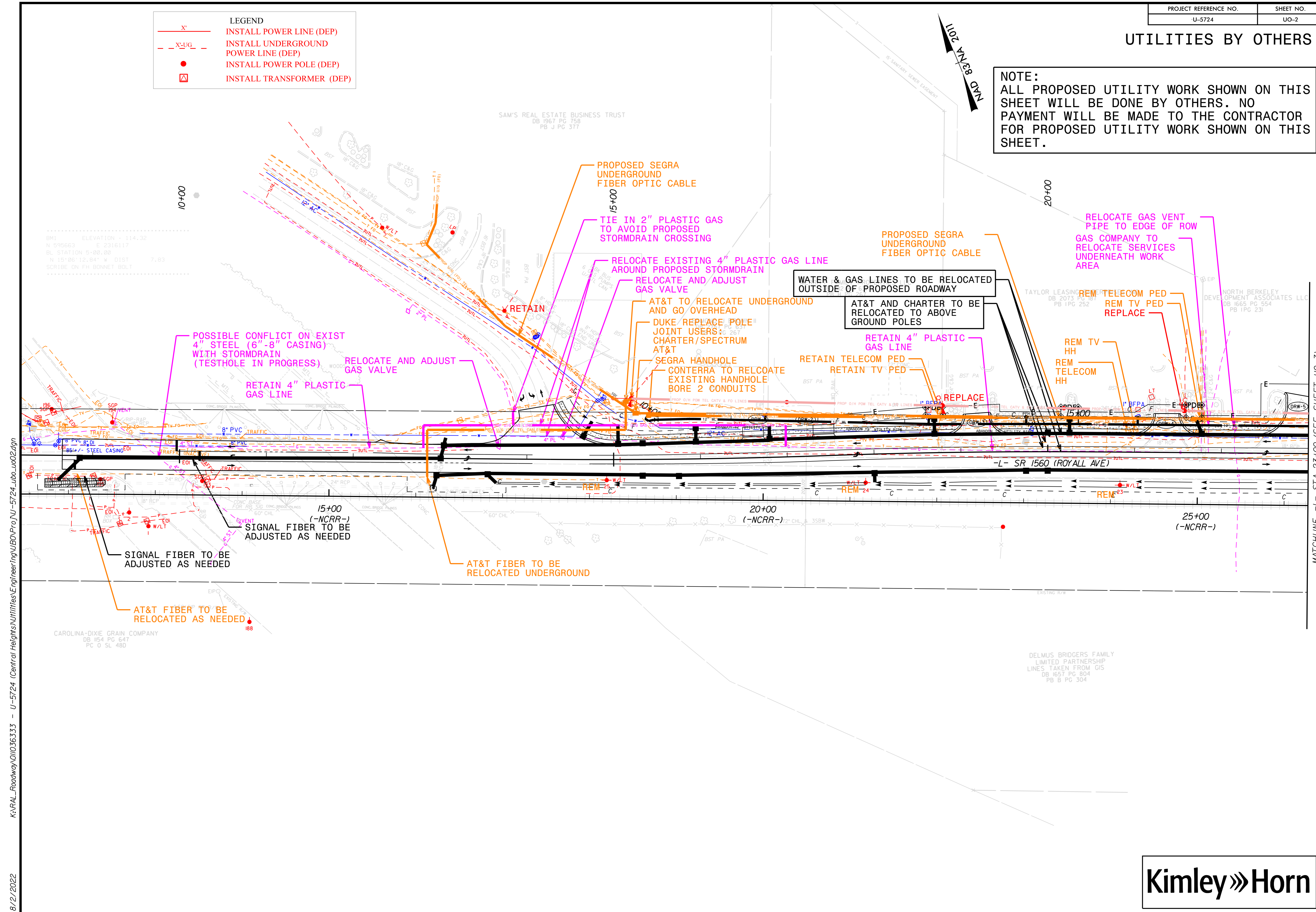
DIVISION UTILITY ENGINEER

10/11/2022

UTILITIES BY OTHERS

NOTE:
 ALL PROPOSED UTILITY WORK SHOWN ON THIS SHEET WILL BE DONE BY OTHERS. NO PAYMENT WILL BE MADE TO THE CONTRACTOR FOR PROPOSED UTILITY WORK SHOWN ON THIS SHEET.

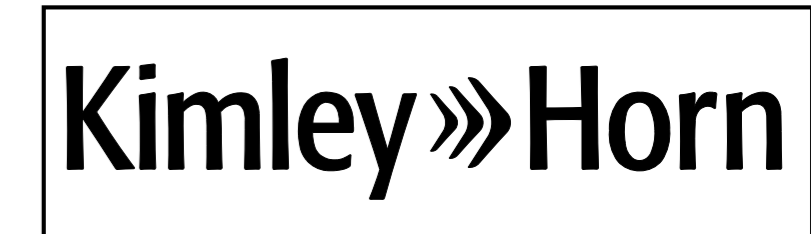
LEGEND	
—X—	INSTALL POWER LINE (DEP)
- -X-UG-	INSTALL UNDERGROUND POWER LINE (DEP)
●	INSTALL POWER POLE (DEP)
⊠	INSTALL TRANSFORMER (DEP)



K:\RAL_Roadway\01036333 - U-5724 (Central Heights)\Utilities\Engineering\UO\Pro\U-5724_uo-2.dgn

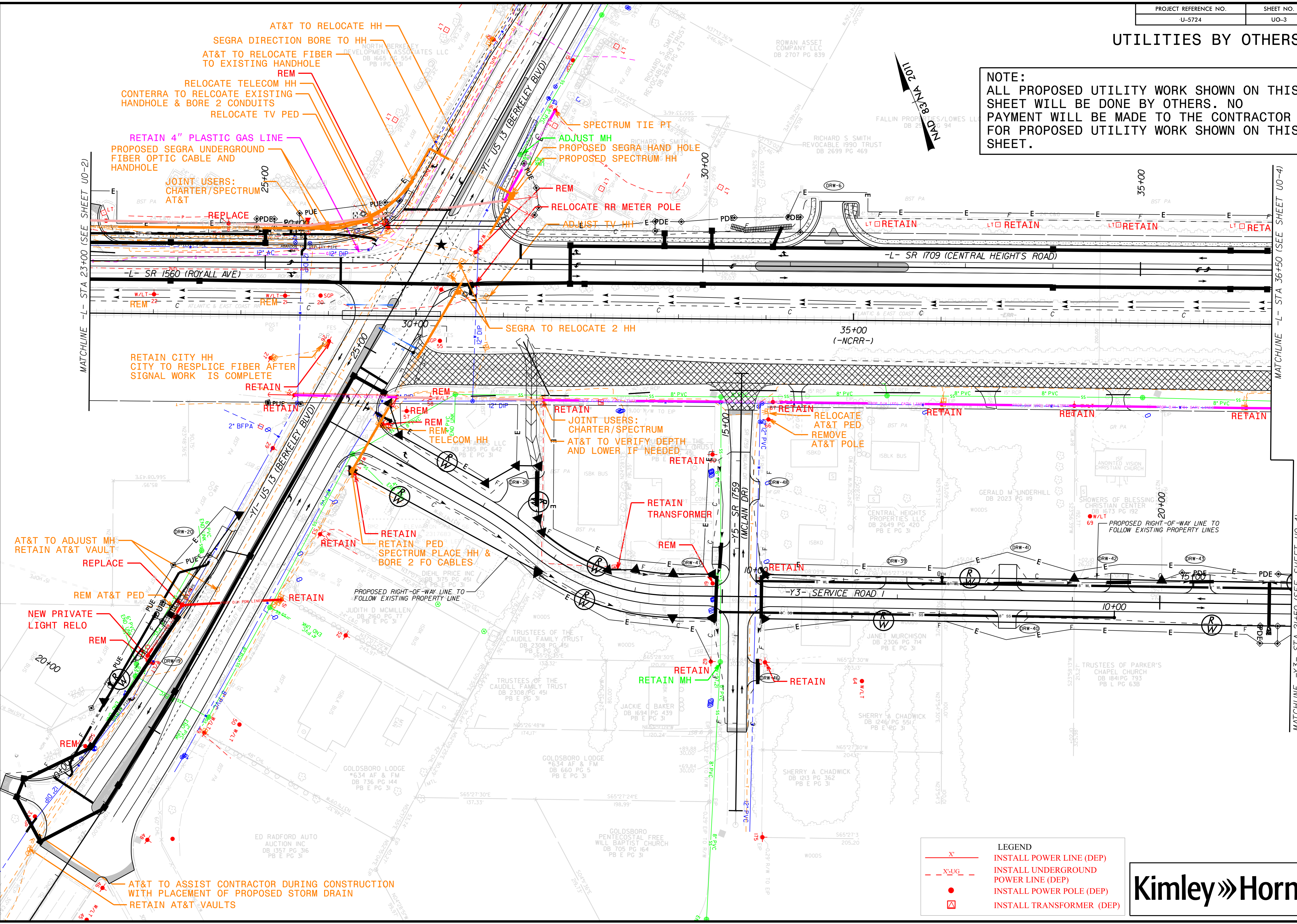
8/2/2022

MATCHLINE -L- STA 23+00 (SEE SHEET UO-3)

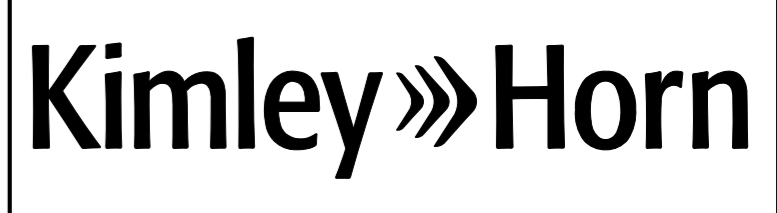


UTILITIES BY OTHERS

NOTE:
 ALL PROPOSED UTILITY WORK SHOWN ON THIS SHEET WILL BE DONE BY OTHERS. NO PAYMENT WILL BE MADE TO THE CONTRACTOR FOR PROPOSED UTILITY WORK SHOWN ON THIS SHEET.



LEGEND	
—X—	INSTALL POWER LINE (DEP)
- -X-UG-	INSTALL UNDERGROUND POWER LINE (DEP)
●	INSTALL POWER POLE (DEP)
□	INSTALL TRANSFORMER (DEP)



K:\RAL_Roadway\010363333 - U-5724 (Central Heights)Utilities\Engineering\UBO\Pro\U-5724_UBO_003.dgn
 10/11/2022

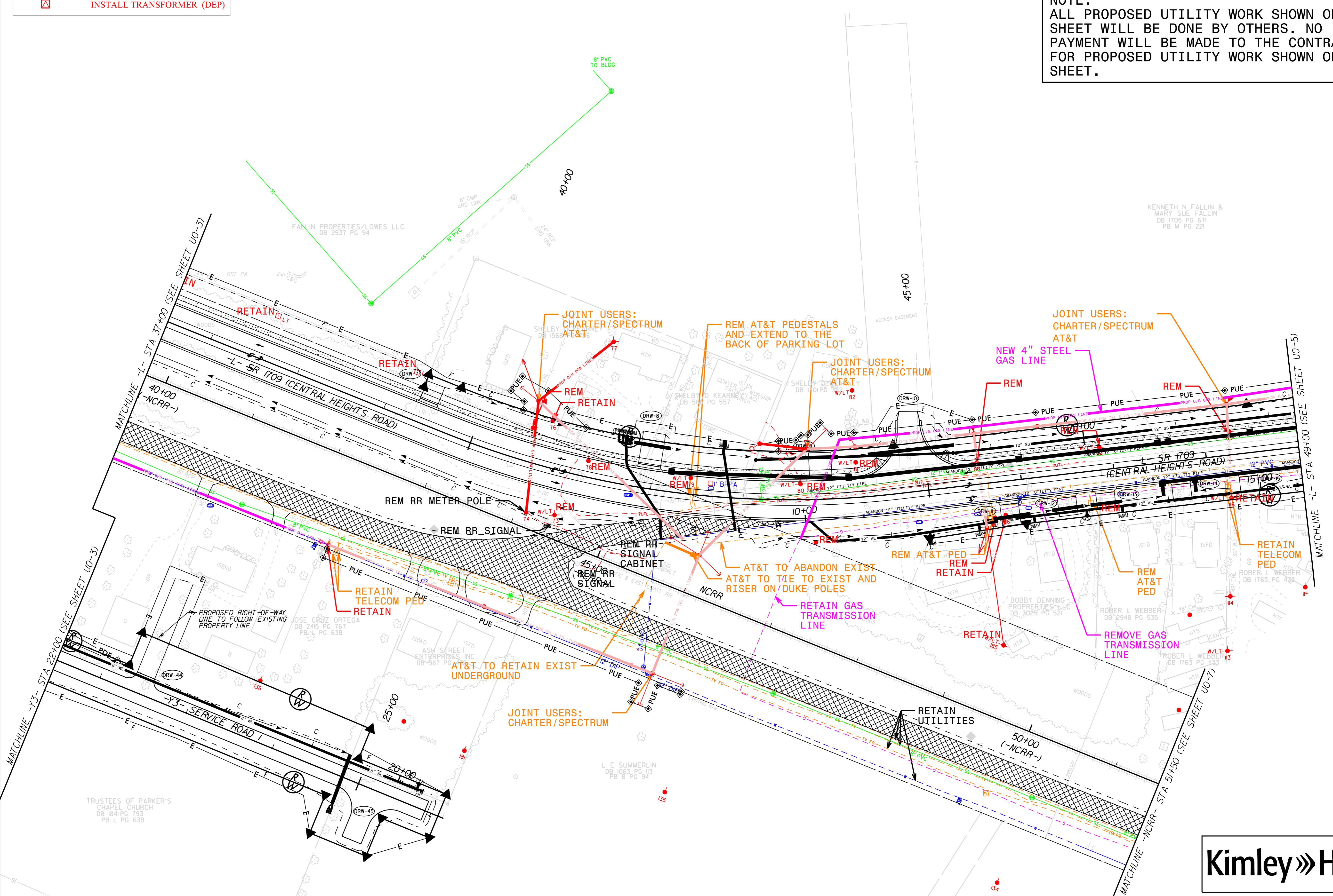
UTILITIES BY OTHERS

NOTE:
 ALL PROPOSED UTILITY WORK SHOWN ON THIS SHEET WILL BE DONE BY OTHERS. NO PAYMENT WILL BE MADE TO THE CONTRACTOR FOR PROPOSED UTILITY WORK SHOWN ON THIS SHEET.

LEGEND	
	INSTALL POWER LINE (DEP)
	INSTALL UNDERGROUND POWER LINE (DEP)
	INSTALL POWER POLE (DEP)
	INSTALL TRANSFORMER (DEP)

NAD 83/NA 2011

K:\RAL_Roadway\010363333 - U-5724 (Central Heights Utilities)Engineering\UO\Pro\U-5724_uo_uo04.dgn



UTILITIES BY OTHERS

NOTE:
 ALL PROPOSED UTILITY WORK SHOWN ON THIS SHEET WILL BE DONE BY OTHERS. NO PAYMENT WILL BE MADE TO THE CONTRACTOR FOR PROPOSED UTILITY WORK SHOWN ON THIS SHEET.

NAD 83/NA 2011

USE 4:1 SLOPES MINIMUM THROUGH DUKE ENERGY EASEMENT.

PROPOSED DITCH ELEV. 110.40'

PROPOSED BOX SECTION ON EXISTING 4" STEEL

DRIVEWAY/SIDEWALK TO BE CONSTRUCTED WITH 6" STONE AND 6" REINFORCED CONCRETE SIDEWALK DUE TO HEAVY EQUIPMENT.

CONTRACTOR TO INSTALL SILT FENCE ALONG TEMPORARY CONSTRUCTION EASEMENT PRIOR TO BEGINNING WORK. NO WORK OR EQUIPMENT SHALL BE LOCATED OUTSIDE THIS WORK AREA.

DUKE TRANSMISSION REPLACEMENT OF TOWERS

RETAIN 4" GAS TRANSMISSION LINE

INSTALL 6" DISTRIBUTION MAIN 3' FROM ROW

NEW 4" STEEL GAS LINE

RETAIN TRANSMISSION POLES

CONTRACTOR TO INSTALL SILT FENCE ALONG TEMPORARY CONSTRUCTION EASEMENT PRIOR TO BEGINNING WORK. NO WORK OR EQUIPMENT SHALL BE LOCATED OUTSIDE THIS WORK AREA.

JOINT USERS: CHARTER/SPECTRUM AT&T

REM TV PED

REM

RELOCATE AT&T IPED

GAS COMPANY TO REMOVE SERVICES UNDERNEATH WORK AREA

REMOVE GAS TRANSMISSION LINE

AT&T TO PLACE UNDERGROUND AND TIE TO EXIST

RELOCATE GAS REGULATOR STATION TO ROW

RELOCATE GAS REGULATOR STATION TO ROW

RETAIN TELECOM

UTILITIES TO ABANDON AND REMOVE SERVICES

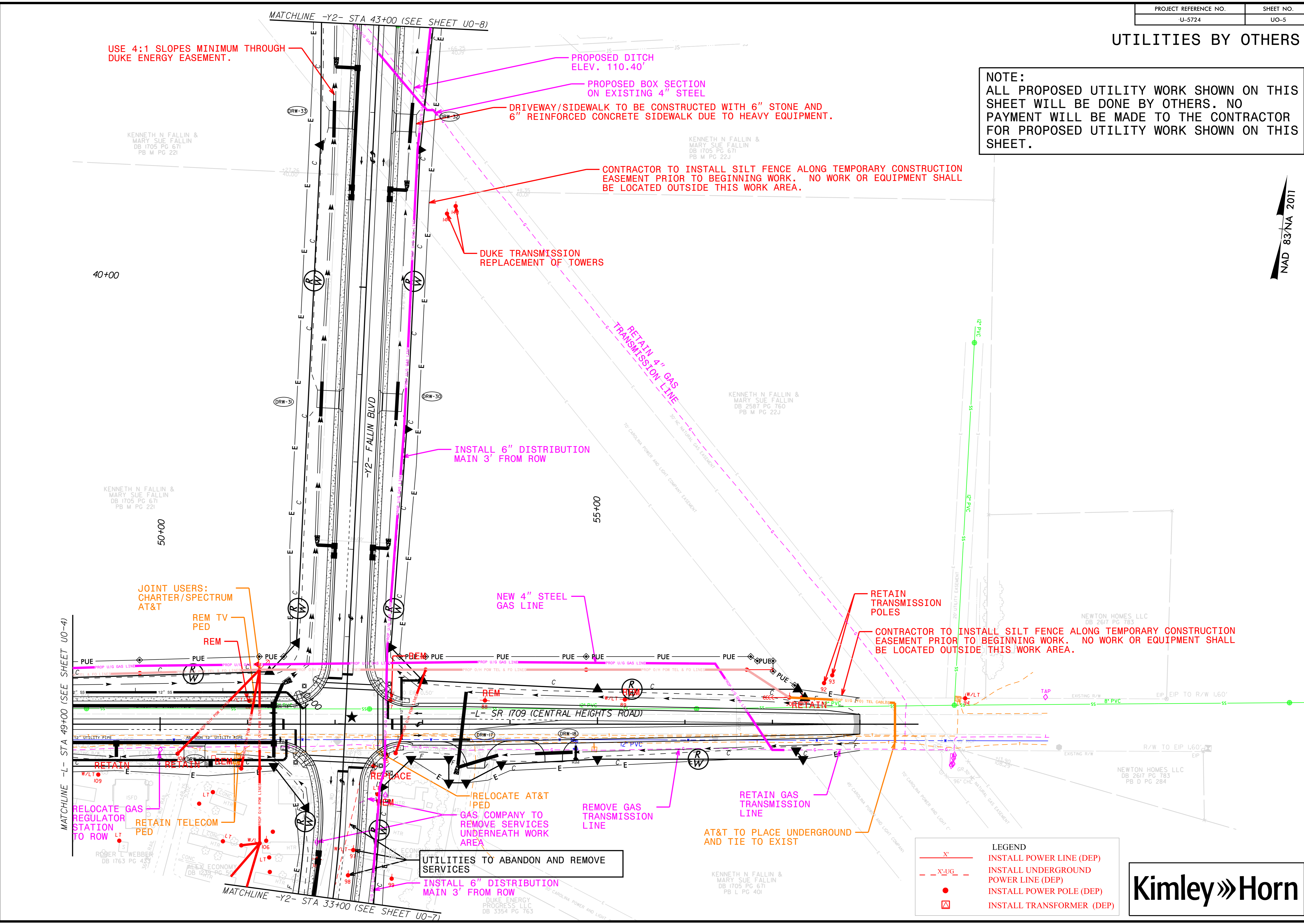
INSTALL 6" DISTRIBUTION MAIN 3' FROM ROW

LEGEND	
—X—	INSTALL POWER LINE (DEP)
- -X-UG-	INSTALL UNDERGROUND POWER LINE (DEP)
●	INSTALL POWER POLE (DEP)
⊠	INSTALL TRANSFORMER (DEP)



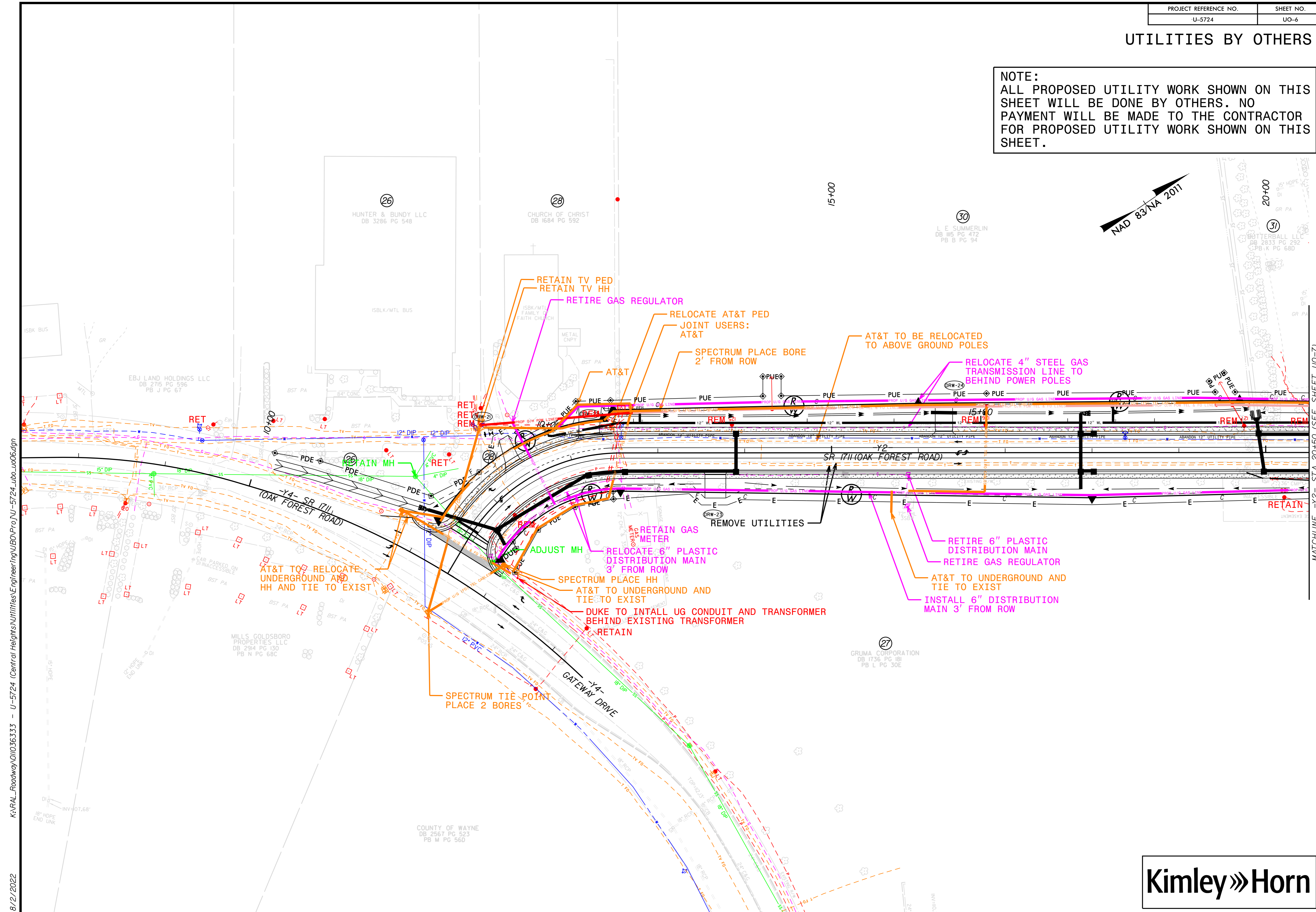
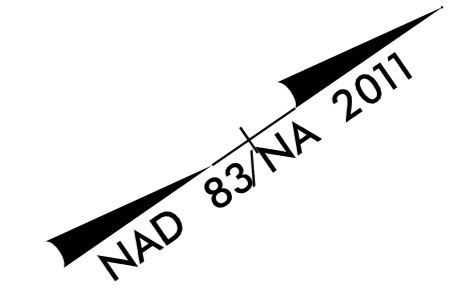
K:\RAL_Roadway\01036333 - U-5724 (Central Heights)\Utilities\Engineering\UBO\Pro\U-5724_UBO_uo05.dgn

10/11/2022



UTILITIES BY OTHERS

NOTE:
 ALL PROPOSED UTILITY WORK SHOWN ON THIS SHEET WILL BE DONE BY OTHERS. NO PAYMENT WILL BE MADE TO THE CONTRACTOR FOR PROPOSED UTILITY WORK SHOWN ON THIS SHEET.

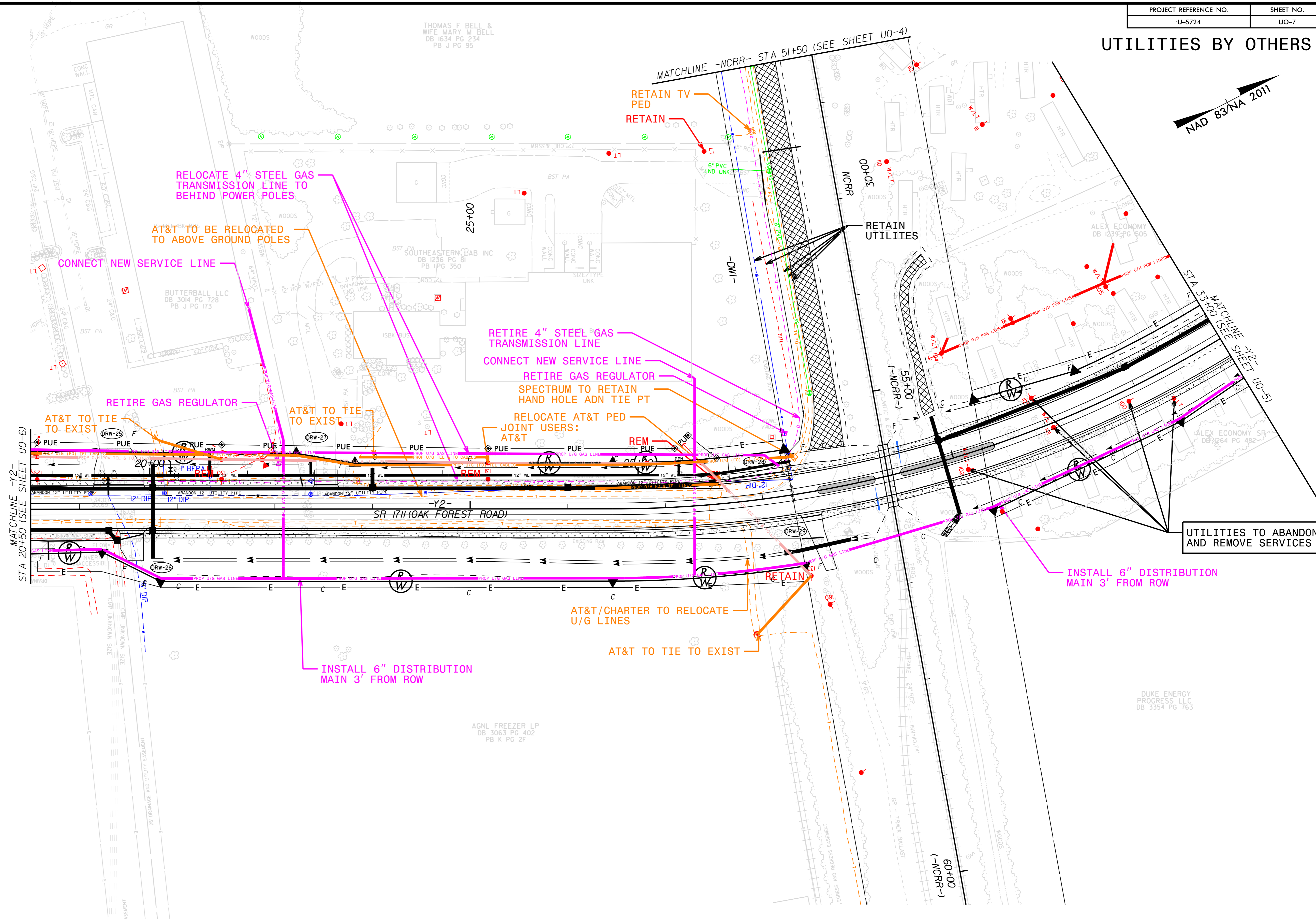
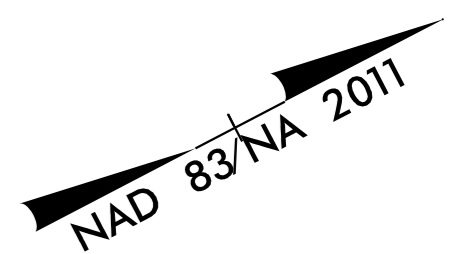


K:\RAL_Roadway\01036333 - U-5724 (Central Heights\Utilities\UBO\Pro\U-5724_UBO\06.dgn 8/2/2022

MATCHLINE -Y2- STA 20+50 (SEE SHEET UO-7)



UTILITIES BY OTHERS



MATCHLINE -Y2-
STA 20+50 (SEE SHEET UO-6)

MATCHLINE -NCCR- STA 51+50 (SEE SHEET UO-4)

MATCHLINE -Y2-
STA 33+00 (SEE SHEET UO-5)

RELOCATE 4" STEEL GAS TRANSMISSION LINE TO BEHIND POWER POLES

AT&T TO BE RELOCATED TO ABOVE GROUND POLES

CONNECT NEW SERVICE LINE

RETIRE GAS REGULATOR

AT&T TO TIE TO EXIST

AT&T TO TIE TO EXIST

RETIRE 4" STEEL GAS TRANSMISSION LINE

CONNECT NEW SERVICE LINE

RETIRE GAS REGULATOR

SPECTRUM TO RETAIN HAND HOLE AND TIE PT

RELOCATE AT&T PED

JOINT USERS: AT&T

AT&T/CHARTER TO RELOCATE U/G LINES

AT&T TO TIE TO EXIST

INSTALL 6" DISTRIBUTION MAIN 3' FROM ROW

RETAIN TV PED

RETAIN

RETAIN UTILITES

UTILITIES TO ABANDON AND REMOVE SERVICES

INSTALL 6" DISTRIBUTION MAIN 3' FROM ROW

AGNL FREEZER LP
DB 3063 PG 402
PB K PG 2F

DUKE ENERGY
PROGRESS LLC
DB 3354 PG 763

LEGEND	
—X—	INSTALL POWER LINE (DEP)
-X-U-G-	INSTALL UNDERGROUND POWER LINE (DEP)
●	INSTALL POWER POLE (DEP)
⊠	INSTALL TRANSFORMER (DEP)

NOTE:
ALL PROPOSED UTILITY WORK SHOWN ON THIS SHEET WILL BE DONE BY OTHERS. NO PAYMENT WILL BE MADE TO THE CONTRACTOR FOR PROPOSED UTILITY WORK SHOWN ON THIS SHEET.

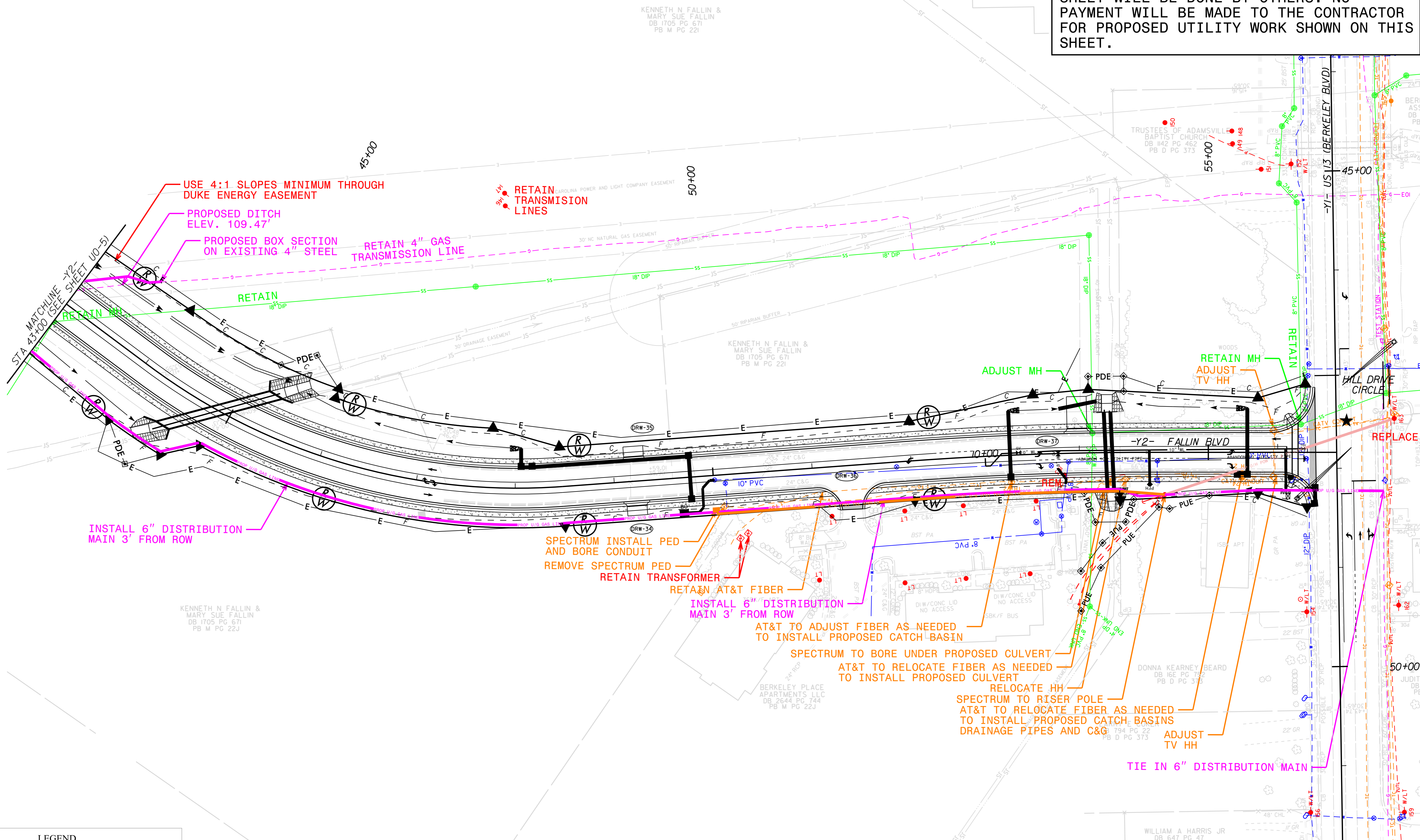


K:\RAL_Roadway\01036333 - U-5724 (Central Heights)\Utilities\Engineering\UBO\Pro\U-5724_UBO_uo07.dgn

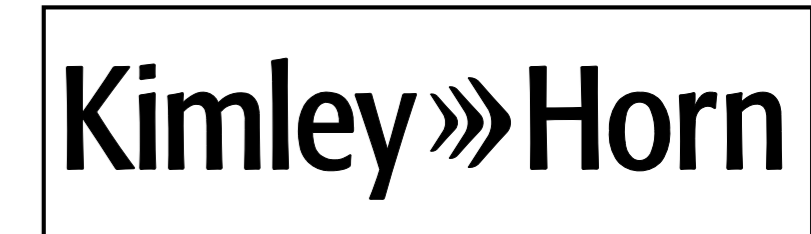
8/2/2022

UTILITIES BY OTHERS

NOTE:
 ALL PROPOSED UTILITY WORK SHOWN ON THIS SHEET WILL BE DONE BY OTHERS. NO PAYMENT WILL BE MADE TO THE CONTRACTOR FOR PROPOSED UTILITY WORK SHOWN ON THIS SHEET.



LEGEND	
—X—	INSTALL POWER LINE (DEP)
- -X-U-G - -	INSTALL UNDERGROUND POWER LINE (DEP)
●	INSTALL POWER POLE (DEP)
⊠	INSTALL TRANSFORMER (DEP)



K:\RAL_Roadway\01036333 - U-5724 (Central Heights\Utilities\Engineering\UO\Pro\U-5724_uo_uo08.dgn
 10/11/2022