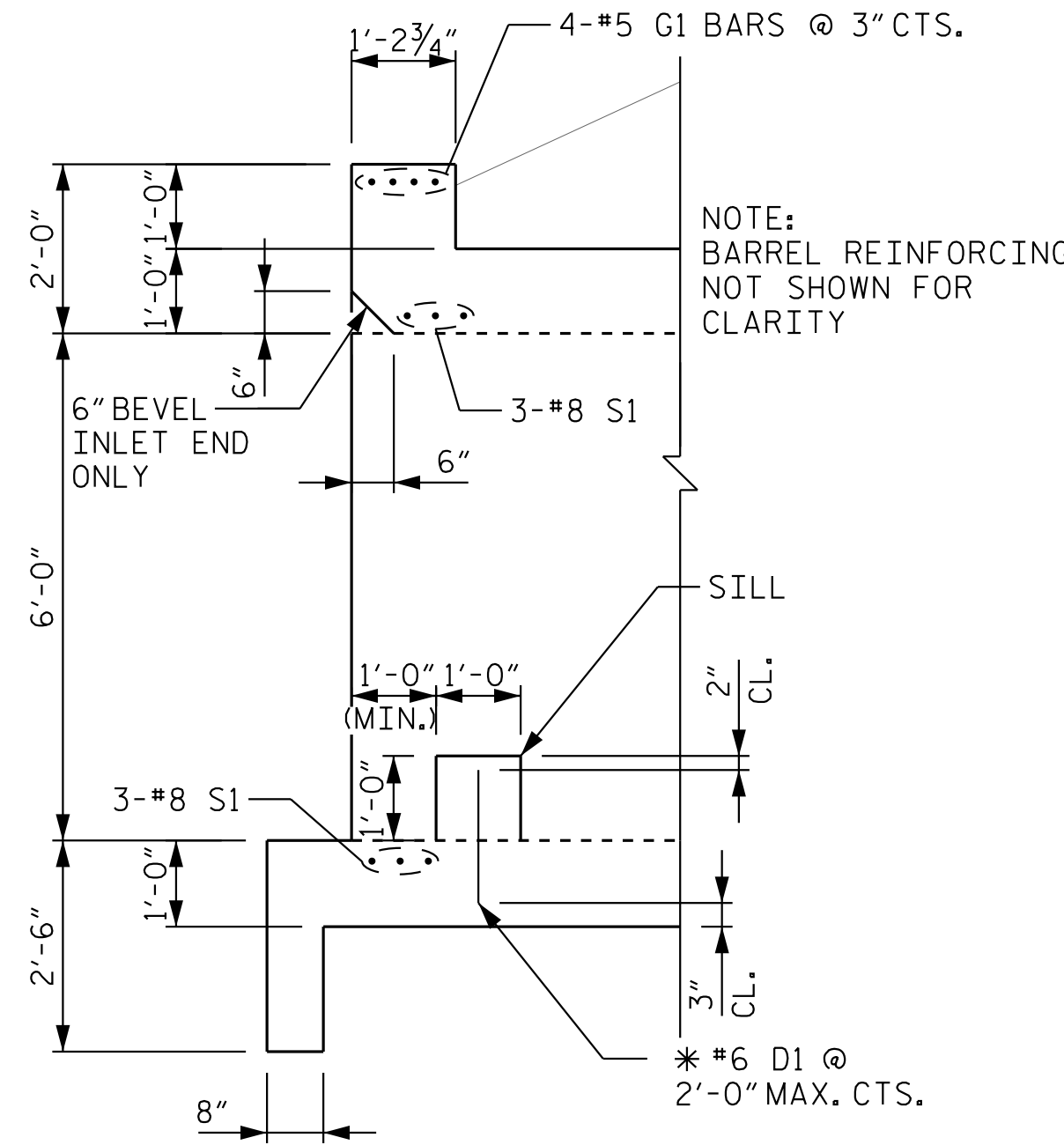


NOTE:  
WING WALLS NOT  
SHOWN FOR CLARITY.

### SILL ELEVATION

(LOOKING DOWNSTREAM, INLET END SHOWN. OUTLET END SIMILAR.)



### SECTION A-A

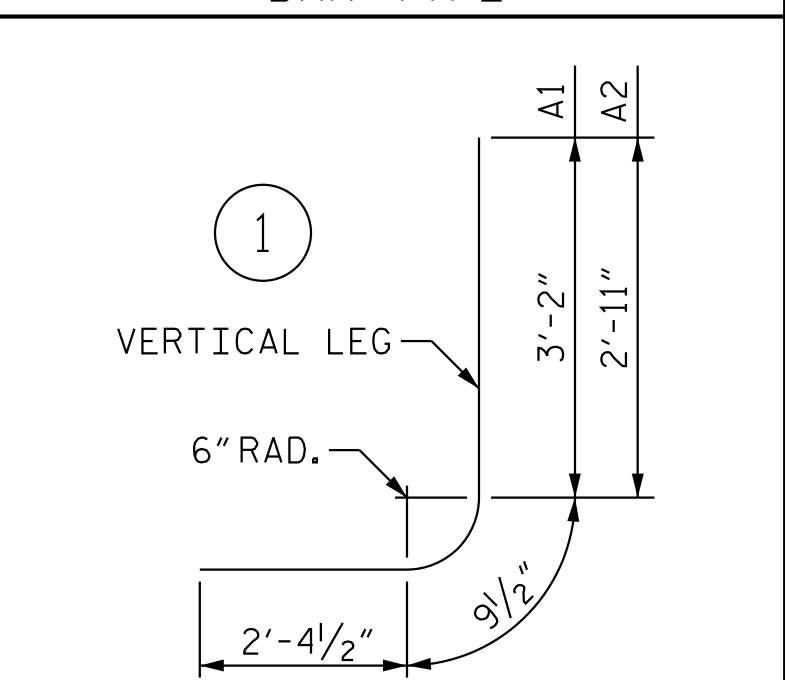
(INLET END SHOWN, OUTLET SIMILAR)

\* DOWELS MAY BE PUSHED  
INTO GREEN CONCRETE AFTER  
SLAB HAS BEEN FLOAT FINISHED  
NOTE: 1'-0" SILL IS TO BE CAST NORMAL  
TO CULVERT WALLS.

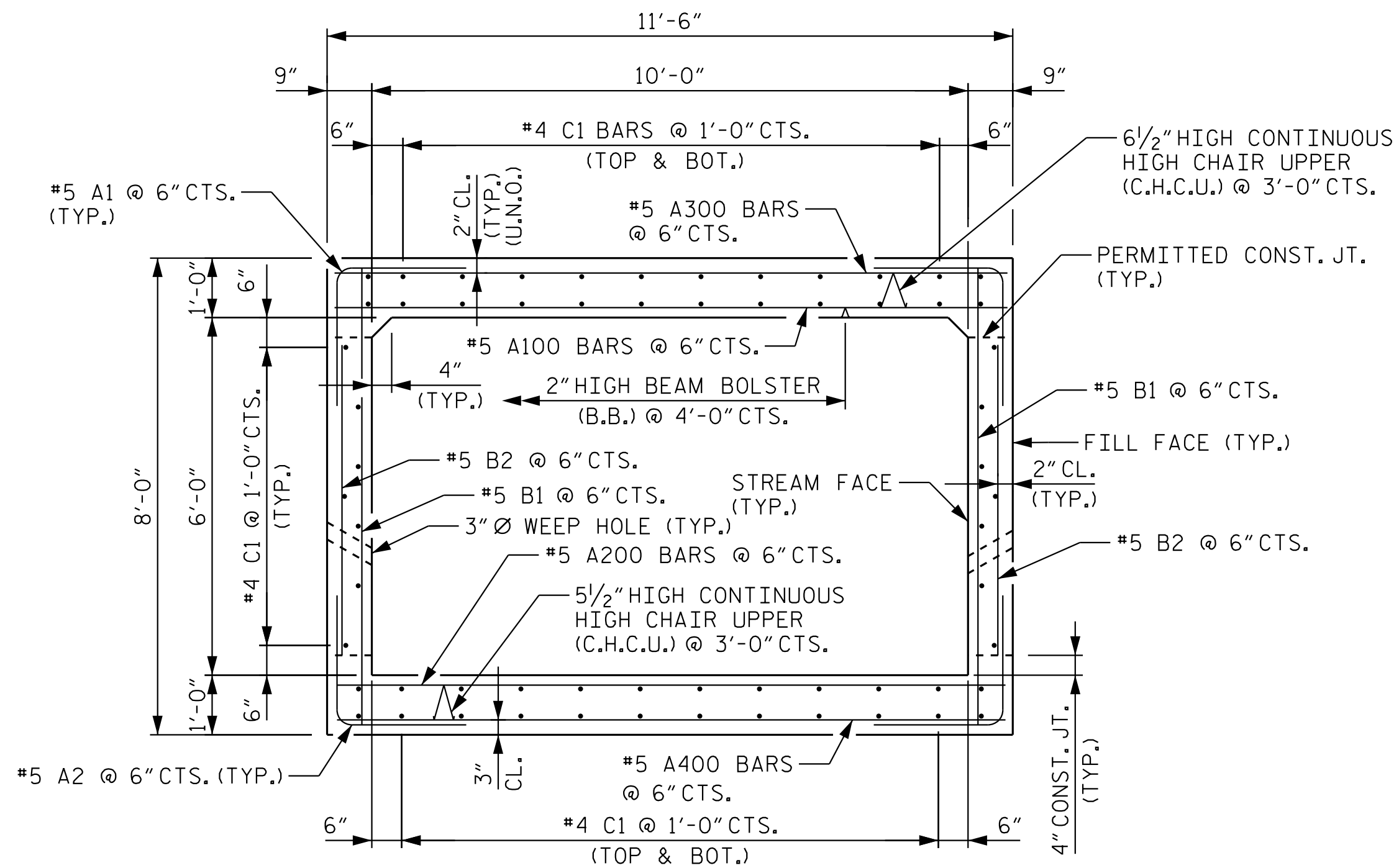
BAR NO.	SIZE	TYPE	LENGTH	WEIGHT	BAR NO.	SIZE	TYPE	LENGTH	WEIGHT		
A1	478	5	1	6'-4"	3,158	A308	2	5	STR	7'-2"	15
A2	478	5	1	6'-1"	3,033	A309	2	5	STR	6'-7"	14
						A310	2	5	STR	6'-1"	13
A100	218	5	STR	11'-2"	2,539	A311	2	5	STR	5'-7"	12
A101	2	5	STR	10'-10"	23	A312	2	5	STR	5'-0"	10
A102	2	5	STR	8'-9"	18	A313	2	5	STR	4'-6"	9
A103	2	5	STR	9'-10"	21	A314	2	5	STR	4'-0"	8
A104	2	5	STR	9'-3"	19	A315	2	5	STR	3'-5"	7
A105	2	5	STR	8'-9"	18	A316	2	5	STR	2'-11"	6
A106	2	5	STR	8'-2"	17	A317	2	5	STR	2'-5"	5
A107	2	5	STR	7'-8"	16	A318	8	5	STR	2'-2"	18
A108	2	5	STR	7'-2"	15						
A109	2	5	STR	6'-7"	14	A400	218	5	STR	11'-2"	2,539
A110	2	5	STR	6'-1"	13	A401	2	5	STR	10'-10"	23
A111	2	5	STR	5'-7"	12	A402	2	5	STR	10'-4"	22
A112	2	5	STR	5'-0"	10	A403	2	5	STR	9'-10"	21
A113	2	5	STR	4'-6"	9	A404	2	5	STR	9'-3"	19
A114	2	5	STR	4'-0"	8	A405	2	5	STR	8'-9"	18
A115	2	5	STR	3'-5"	7	A406	2	5	STR	8'-2"	17
A116	2	5	STR	2'-11"	6	A407	2	5	STR	7'-8"	16
A117	2	5	STR	2'-5"	5	A408	2	5	STR	7'-2"	15
A118	8	5	STR	2'-2"	18	A409	2	5	STR	6'-7"	14
						A410	2	5	STR	6'-1"	13
A200	218	5	STR	11'-2"	2,539	A411	2	5	STR	5'-7"	12
A201	2	5	STR	10'-10"	23	A412	2	5	STR	5'-0"	10
A202	2	5	STR	10'-4"	22	A413	2	5	STR	4'-6"	9
A203	2	5	STR	9'-10"	21	A414	2	5	STR	4'-0"	8
A204	2	5	STR	9'-3"	19	A415	2	5	STR	3'-5"	7
A205	2	5	STR	8'-9"	18	A416	2	5	STR	2'-11"	6
A206	2	5	STR	8'-2"	17	A417	2	5	STR	2'-5"	5
A207	2	5	STR	7'-8"	16	A418	8	5	STR	2'-2"	18
A208	2	5	STR	7'-2"	15						
A209	2	5	STR	6'-7"	14	B1	478	5	STR	7'-7"	3,781
A210	2	5	STR	6'-1"	13	B2	478	5	STR	5'-2"	2,576
A211	2	5	STR	5'-7"	12						
A212	2	5	STR	5'-0"	10	C1	248	4	STR	31'-4"	5,191
A213	2	5	STR	4'-6"	9						
A214	2	5	STR	4'-0"	8	D1	10	6	STR	1'-7"	24
A215	2	5	STR	3'-5"	7						
A216	2	5	STR	2'-11"	6	G1	8	5	STR	15'-4"	128
A217	2	5	STR	2'-5"	5						
A218	8	5	STR	2'-2"	18	S1	12	8	STR	15'-4"	491
A300	218	5	STR	11'-2"	2,539						
A301	2	5	STR	10'-10"	23						
A302	2	5	STR	10'-4"	22						
A303	2	5	STR	9'-10"	21						
A304	2	5	STR	9'-3"	19						
A305	2	5	STR	8'-9"	18						
A306	2	5	STR	8'-2"	17						
A307	2	5	STR	7'-8"	16						

REINFORCING STEEL LBS. 29,550

BAR TYPE



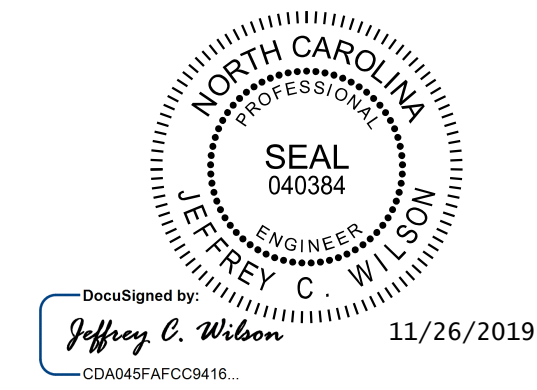
ALL BAR DIMENSIONS ARE OUT TO OUT



### RIGHT ANGLE SECTION OF BARREL

THERE ARE 62 "C" BARS IN SECTION OF BARREL

BAR SIZE	SPLICE LENGTH
#4	1'-10"
#5	2'-4"
#6	2'-9"
#7	3'-2"
#8	3'-8"



### Kimley»Horn

421 Fayetteville Street, Suite 600  
Raleigh, NC 27601-1772  
Phone (919) 677-2000  
NC LICENSE # F-0102

This document, together with the concepts and designs presented herein, is an integral part of the project. It is intended for the specific project and area shown. Any reuse or modification of this document without the written authorization and approval of Kimley-Horn and Associates, Inc. shall be without liability to Kimley-Horn and Associates, Inc.  
Copyright Kimley-Horn and Associates, Inc., 2019

PROJECT NO. U-5724

WAYNE COUNTY

STATION: 44+87.00 -Y2-

SHEET 2 OF 8

STATE OF NORTH CAROLINA  
DEPARTMENT OF TRANSPORTATION  
RALEIGH

SINGLE 10 FT. X 6 FT.  
CONCRETE BOX CULVERT  
136° SKEW

REVISIONS						SHEET NO. C-2
NO.	BY:	DATE:	NO.	BY:	DATE:	
1			3			TOTAL SHEETS 8
2			4			

**DOCUMENT NOT CONSIDERED FINAL  
UNLESS ALL SIGNATURES COMPLETED**

DRAWN BY: J. I. KIMBLE DATE: 11/19  
CHECKED BY: C. T. POOLE DATE: 11/19  
DESIGN ENGINEER OF RECORD: J. C. WILSON DATE: 11/19