

5/14/2011

NOTE:
THE ESTIMATED QUANTITY OF DUCTILE IRON WATER PIPE FITTINGS ON THIS PLAN SHEET IS 733 POUNDS. THE ACTUAL QUANTITY AND TYPE OF FITTINGS WILL VARY BASED ON FIELD CONDITIONS.

- NOTES:
- ADJUST AND RECONNECT ALL SEWER LATERALS TO NEW 8" AND 12" DIP ENCOUNTERED ON ALL SEWER REPLACEMENT WORK. SANITARY SEWER CLEANOUTS SHALL BE INSTALLED ALONG THE R/W OR PUE BOUNDARY AS DIRECTED BY THE CITY.
 - CONTRACTOR SHALL VERIFY NUMBER OF WATER METERS TO BE RELOCATED WITH UTILITY OWNER PRIOR TO RELOCATING.
 - UNIONS OR OTHER FITTINGS SHALL NOT BE PERMITTED UNDER PAVEMENT.
 - ALL CONSTRUCTION IN NCRR RIGHT-OF-WAY SHALL MEET THE REQUIREMENTS OF NCR 102, "SPECIFICATIONS FOR PIPELINE OCCUPANCY OF NORTH CAROLINA RAILROAD COMPANY PROPERTY" AND NORTH CAROLINA / NORFOLK SOUTHERN RAILWAY - SPECIAL PROVISIONS FOR PROTECTION OF RAILWAY INTEREST.

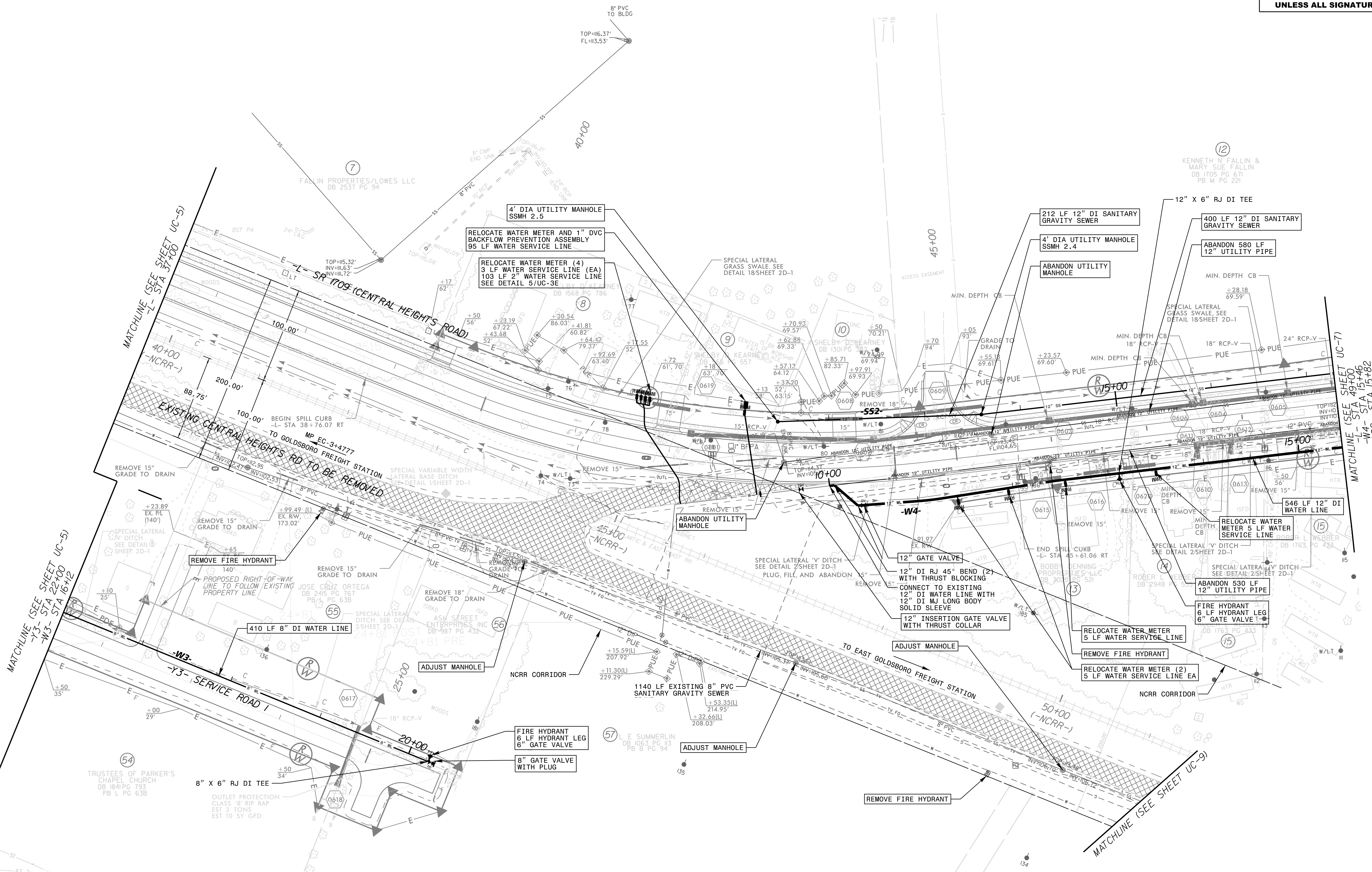
Kimley Horn
 421 FAYETTEVILLE STREET, SUITE 600
 RALEIGH, NC 27601

RIGHT-OF-WAY REV.
 CONST. REV.

PROJECT REFERENCE NO. U-5724	SHEET NO. UC-6
UTILITY DESIGN ENGINEER	
<p>DOCUMENT NOT CONSIDERED FINAL UNLESS ALL SIGNATURES COMPLETED</p>	

NAD 83/NA 2011

REVISIONS



MATCHLINE (SEE SHEET UC-5)
 -Y3- STA 22+00
 -W3- STA 16+12

MATCHLINE (SEE SHEET UC-9)
 -W4- STA 15+46
 -S2- STA 15+82

TRUSTEES OF PARKER'S CHAPEL CHURCH
 DB 1841 PG 793
 PB L PG 638

8" X 6" RJ DI TEE
 OUTLET PROTECTION CLASS 'B' RIP RAP EST 3 TONS EST 10 SF GFD

FIRE HYDRANT 6 LF HYDRANT LEG 6" GATE VALVE

8" GATE VALVE WITH PLUG

ADJUST MANHOLE

1140 LF EXISTING 8" PVC SANITARY GRAVITY SEWER

REMOVE FIRE HYDRANT

RELOCATE WATER METER (2) 5 LF WATER SERVICE LINE EA

REMOVE FIRE HYDRANT

RELOCATE WATER METER 5 LF WATER SERVICE LINE

ABANDON 530 LF 12" UTILITY PIPE

FIRE HYDRANT 6 LF HYDRANT LEG 6" GATE VALVE 1

RELOCATE WATER METER 5 LF WATER SERVICE LINE

546 LF 12" DI WATER LINE

12" GATE VALVE

12" DI RJ 45° BEND (2) WITH THRUST BLOCKING CONNECT TO EXISTING 12" DI WATER LINE WITH 12" DI MJ LONG BODY SOLID SLEEVE

12" INSERTION GATE VALVE WITH THRUST COLLAR

ABANDON UTILITY MANHOLE

REMOVE 15"

REMOVE 15"

REMOVE 15"

REMOVE 15"

REMOVE 15"

REMOVE 15"

REMOVE 15"

REMOVE 15"

REMOVE 15"

REMOVE 15"

REMOVE 15"

REMOVE 15"

REMOVE 15"

REMOVE 15"

REMOVE 15"

REMOVE 15"

REMOVE 15"

REMOVE 15"

REMOVE 15"

REMOVE 15"

REMOVE 15"

REMOVE 15"

REMOVE 15"

REMOVE 15"

REMOVE 15"

REMOVE 15"

REMOVE 15"

REMOVE 15"

REMOVE 15"

REMOVE 15"

REMOVE 15"