

Kimley»Horn
 421 FAYETTEVILLE STREET, SUITE 600
 RALEIGH, NC 27601

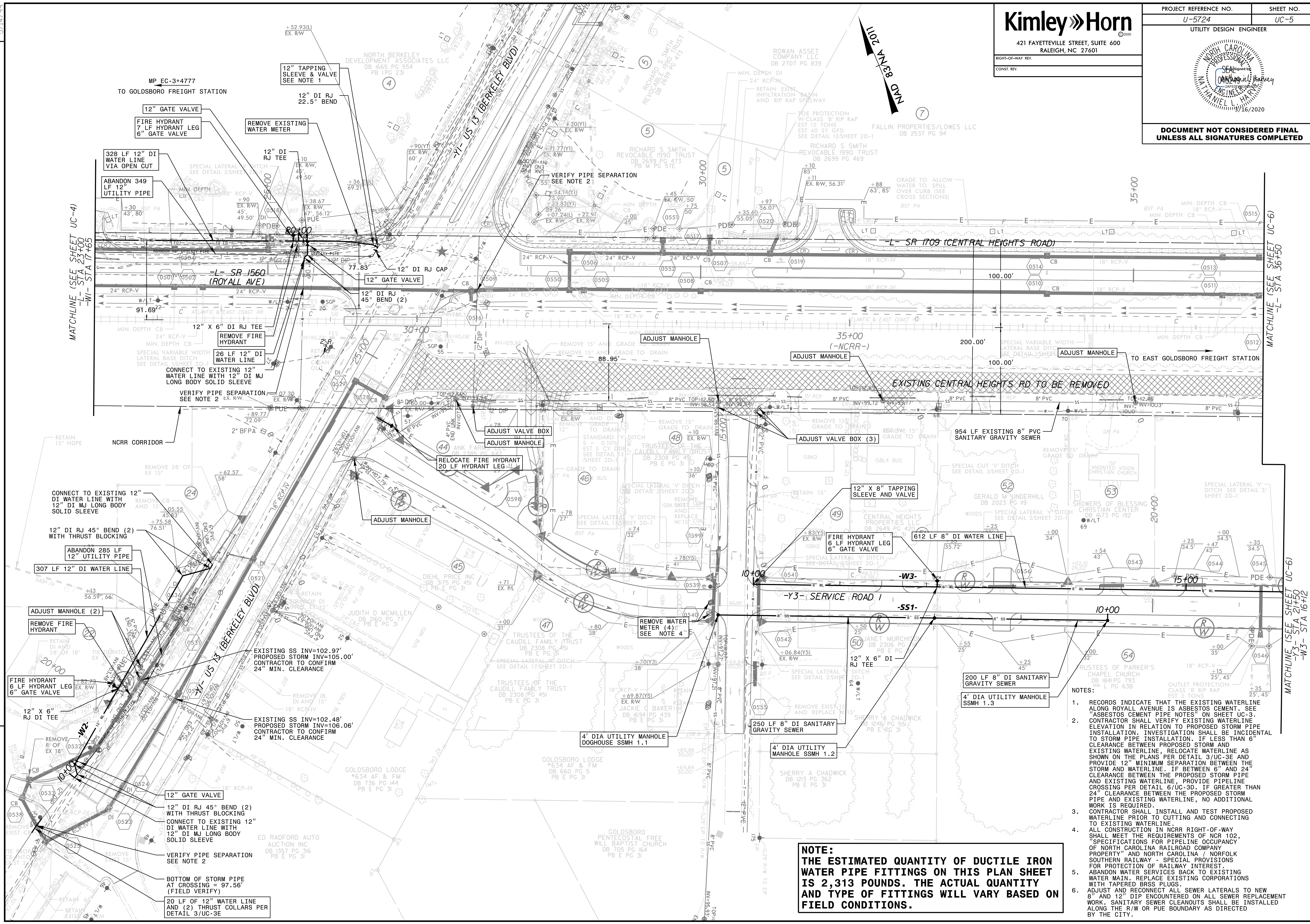
PROJECT REFERENCE NO. U-5724 SHEET NO. UC-5
 UTILITY DESIGN ENGINEER

RIGHT-OF-WAY REV.
 CONST. REV.

16/2020

**DOCUMENT NOT CONSIDERED FINAL
 UNLESS ALL SIGNATURES COMPLETED**

REVISIONS



MP_EC-3+4777 TO GOLDSBORO FREIGHT STATION

12" TAPPING SLEEVE & VALVE SEE NOTE 1

12" DI RJ 22.5" BEND

12" GATE VALVE

FIRE HYDRANT 7 LF HYDRANT LEG 6" GATE VALVE

REMOVE EXISTING WATER METER

328 LF 12" DI WATER LINE VIA OPEN CUT

ABANDON 349 LF 12" UTILITY PIPE

12" DI RJ TEE

12" DI RJ 45° BEND (2)

12" DI RJ 45° BEND (2)

12" DI RJ 45° BEND (2)

12" X 6" DI RJ TEE

REMOVE FIRE HYDRANT

26 LF 12" DI WATER LINE

CONNECT TO EXISTING 12" WATER LINE WITH 12" DI MJ LONG BODY SOLID SLEEVE

VERIFY PIPE SEPARATION SEE NOTE 2

12" DI RJ 45° BEND (2) WITH THRUST BLOCKING

ABANDON 285 LF 12" UTILITY PIPE

307 LF 12" DI WATER LINE

ADJUST MANHOLE (2)

REMOVE FIRE HYDRANT

FIRE HYDRANT 6 LF HYDRANT LEG 6" GATE VALVE

12" X 6" RJ DI TEE

12" GATE VALVE

12" DI RJ 45° BEND (2) WITH THRUST BLOCKING

CONNECT TO EXISTING 12" DI WATER LINE WITH 12" DI MJ LONG BODY SOLID SLEEVE

VERIFY PIPE SEPARATION SEE NOTE 2

BOTTOM OF STORM PIPE AT CROSSING = 97.56' (FIELD VERIFY)

20 LF OF 12" WATER LINE AND (2) THRUST COLLARS PER DETAIL 3/UC-3E

NOTE:
 THE ESTIMATED QUANTITY OF DUCTILE IRON WATER PIPE FITTINGS ON THIS PLAN SHEET IS 2,313 POUNDS. THE ACTUAL QUANTITY AND TYPE OF FITTINGS WILL VARY BASED ON FIELD CONDITIONS.

- NOTES:
- RECORDS INDICATE THAT THE EXISTING WATERLINE ALONG ROYALL AVENUE IS ASBESTOS CEMENT. SEE "ASBESTOS CEMENT PIPE NOTES" ON SHEET UC-3. CONTRACTOR SHALL VERIFY EXISTING WATERLINE ELEVATION IN RELATION TO PROPOSED STORM PIPE INSTALLATION. INVESTIGATION SHALL BE INCIDENTAL TO STORM PIPE INSTALLATION. IF LESS THAN 6" CLEARANCE BETWEEN PROPOSED STORM AND EXISTING WATERLINE, RELOCATE WATERLINE AS SHOWN ON THE PLANS PER DETAIL 3/UC-3E AND PROVIDE 12" MINIMUM SEPARATION BETWEEN THE STORM AND WATERLINE. IF BETWEEN 6" AND 24" CLEARANCE BETWEEN THE PROPOSED STORM PIPE AND EXISTING WATERLINE, PROVIDE PIPELINE CROSSING PER DETAIL 6/UC-3D. IF GREATER THAN 24" CLEARANCE BETWEEN THE PROPOSED STORM PIPE AND EXISTING WATERLINE, NO ADDITIONAL WORK IS REQUIRED.
 - CONTRACTOR SHALL INSTALL AND TEST PROPOSED WATERLINE PRIOR TO CUTTING AND CONNECTING TO EXISTING WATERLINE.
 - ALL CONSTRUCTION IN NCR RIGHT-OF-WAY SHALL MEET THE REQUIREMENTS OF NCR 102, "SPECIFICATIONS FOR PIPELINE OCCUPANCY OF NORTH CAROLINA RAILROAD COMPANY PROPERTY" AND NORTH CAROLINA / NORFOLK SOUTHERN RAILWAY - SPECIAL PROVISIONS FOR PROTECTION OF RAILWAY INTEREST.
 - ABANDON WATER SERVICES BACK TO EXISTING WATER MAIN. REPLACE EXISTING CORPORATIONS WITH TAPERED BRSS PLUGS.
 - ADJUST AND RECONNECT ALL SEWER LATERALS TO NEW 8" AND 12" DIP ENCOUNTERED ON ALL SEWER REPLACEMENT WORK. SANITARY SEWER CLEANOUTS SHALL BE INSTALLED ALONG THE R/W OR PUE BOUNDARY AS DIRECTED BY THE CITY.