

5/14/20

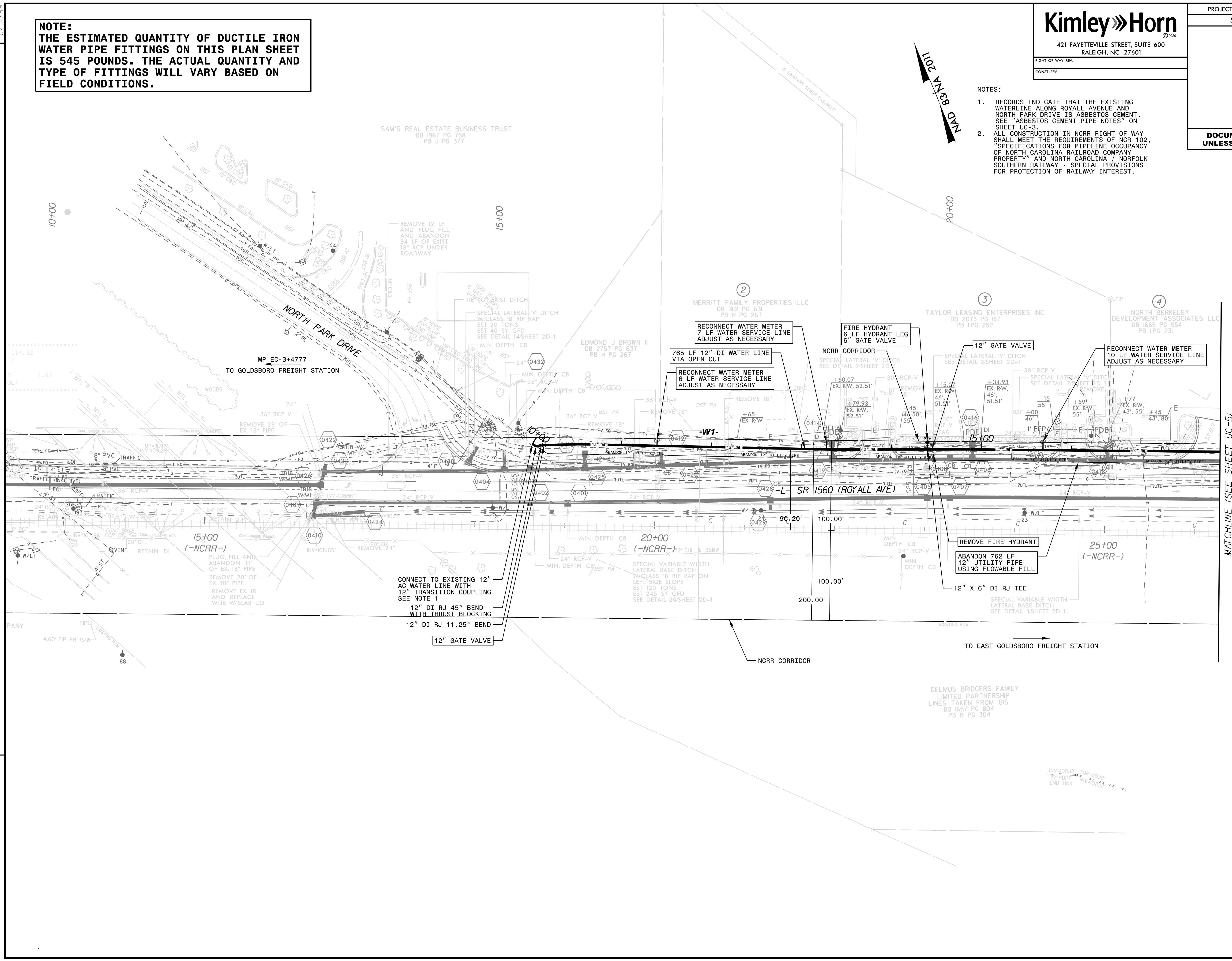
NOTE:
THE ESTIMATED QUANTITY OF DUCTILE IRON WATER PIPE FITTINGS ON THIS PLAN SHEET IS 545 POUNDS. THE ACTUAL QUANTITY AND TYPE OF FITTINGS WILL VARY BASED ON FIELD CONDITIONS.

Kimley Horn
 421 FAYETTEVILLE STREET, SUITE 600
 RALEIGH, NC 27601

PROJECT REFERENCE NO. U-5724	SHEET NO. UC-4
UTILITY DESIGN ENGINEER	
DOCUMENT NOT CONSIDERED FINAL UNLESS ALL SIGNATURES COMPLETED	

- NOTES:
- RECORDS INDICATE THAT THE EXISTING WATERLINE ALONG ROYALL AVENUE AND NORTH PARK DRIVE IS ASBESTOS CEMENT. SEE "ASBESTOS CEMENT PIPE NOTES" ON SHEET UC-3.
 - ALL CONSTRUCTION IN NCRR RIGHT-OF-WAY SHALL MEET THE REQUIREMENTS OF NCR 102, "SPECIFICATIONS FOR PIPELINE OCCUPANCY OF NORTH CAROLINA RAILROAD COMPANY PROPERTY" AND NORTH CAROLINA / NORFOLK SOUTHERN RAILWAY - SPECIAL PROVISIONS FOR PROTECTION OF RAILWAY INTEREST.

REVISIONS



MATCHLINE (SEE SHEET UC-5)
-W1- STA 17+65

INV=108.12' TOP=101.8'
5' HYPE = INV=108.72' =