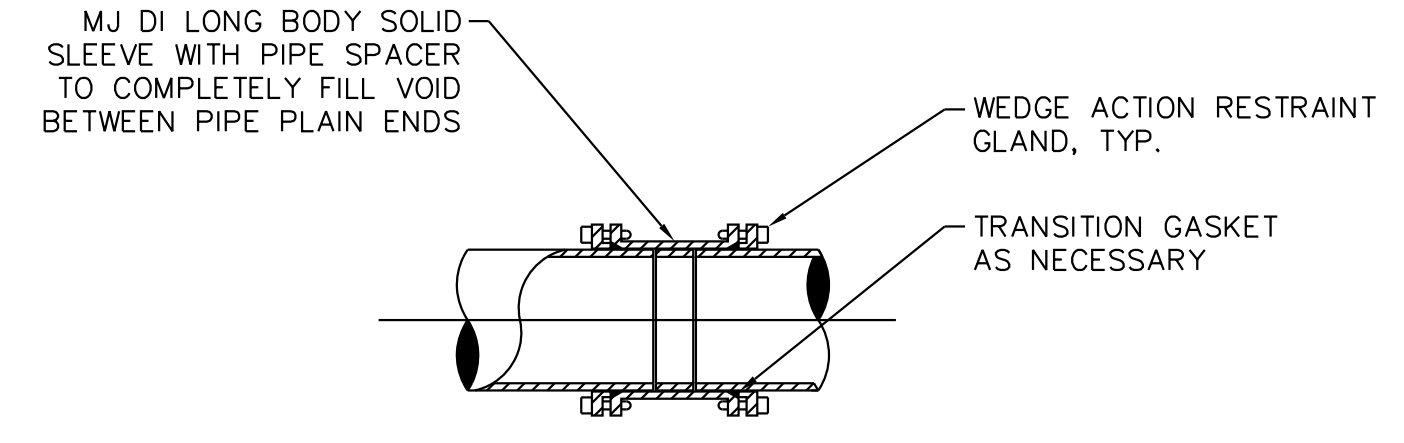


5/14/99

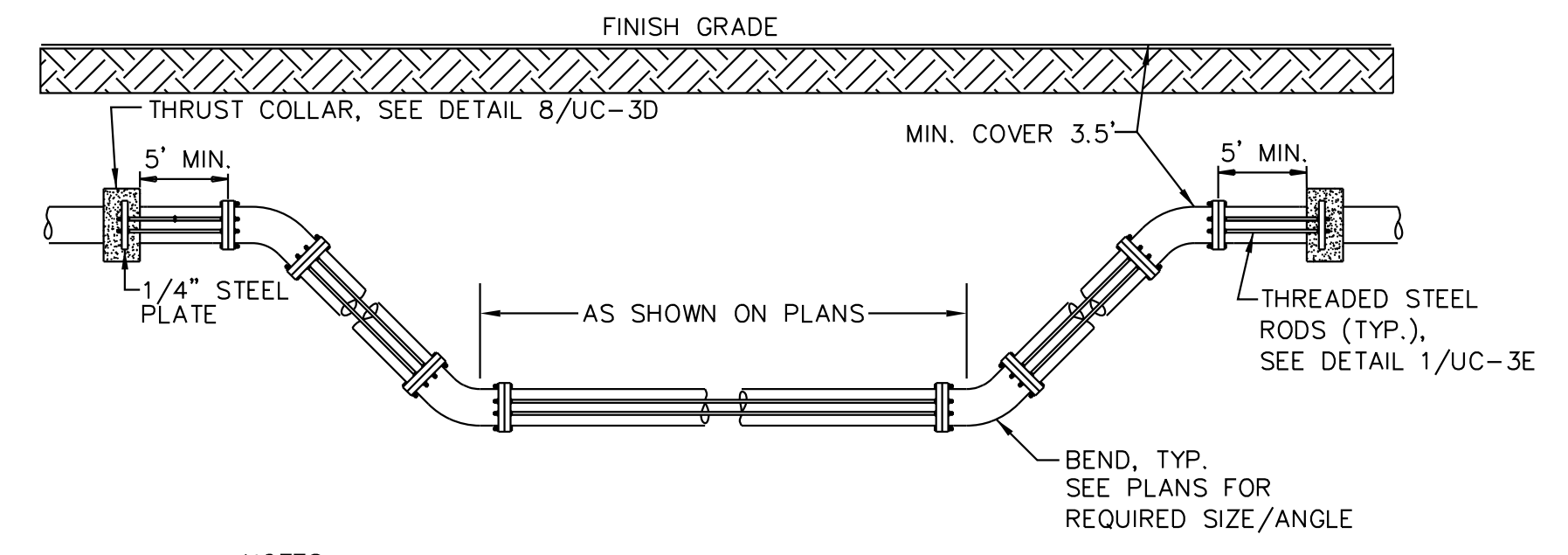
DESIGN PRESSURE 200 PSI		
PIPE SIZE	ROD DIA	NUMBER REQ'D
4" TO 8"	3/4"	2
10" TO 20"	3/4"	4
24"	3/4"	6
30"	1"	6
36"	1"	8

1. THREADED RODS FOR PIPE DIAMETERS LARGER THAN 12" SHALL BE ASTM A193 (GRADE B7). ALL OTHER THREADED RODS SHALL BE ASTM A36.
2. ALL HARDWARE IN CONTACT WITH SOIL SHALL BE PAINTED WITH TWO COATS HIGH BUILD COAL TAR EPOXY (MIN 26 MIL DRY FILM THICKNESS)
5. RODS SHALL BE EQUALLY SPACED AROUND PIPE.

1 **THREADED ROD SCHEDULE**
 UC-3E SCALE: N.T.S.



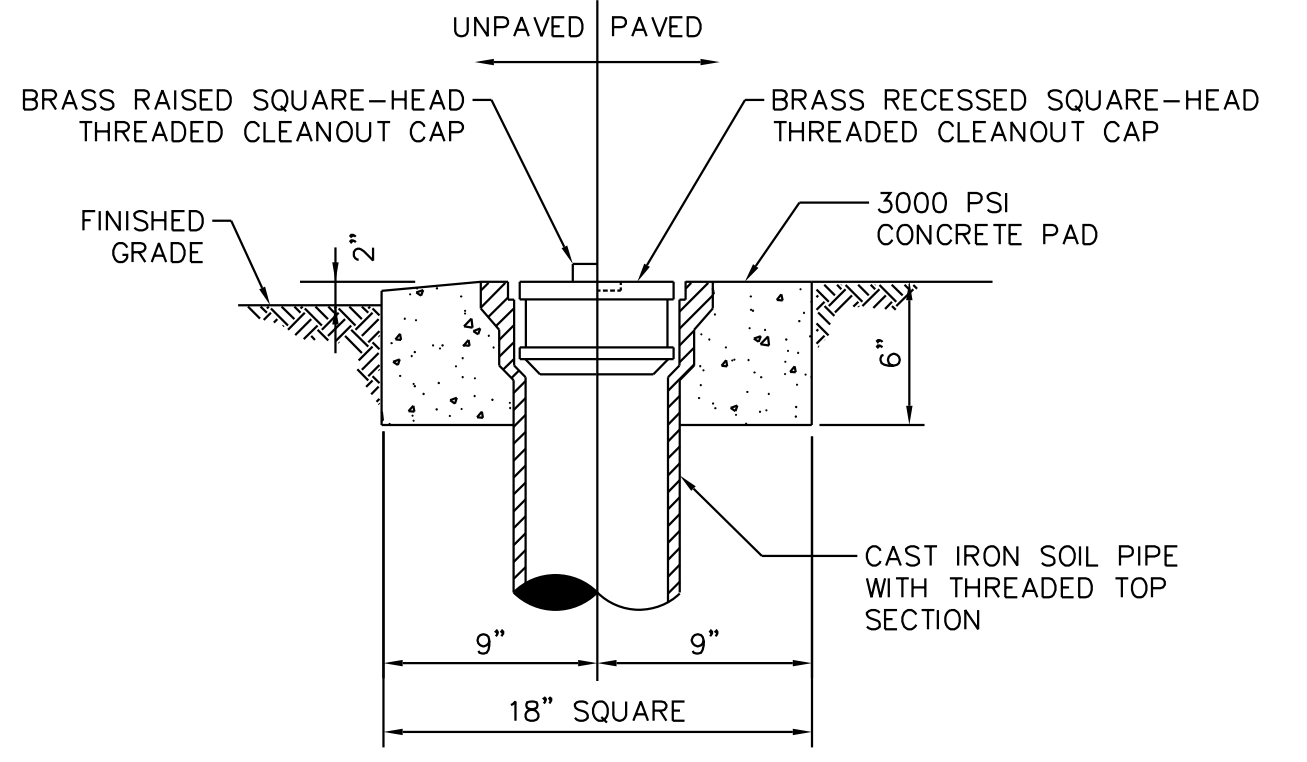
2 **RESTRAINED MJ SOLID SLEEVE**
 UC-3E SCALE: N.T.S.



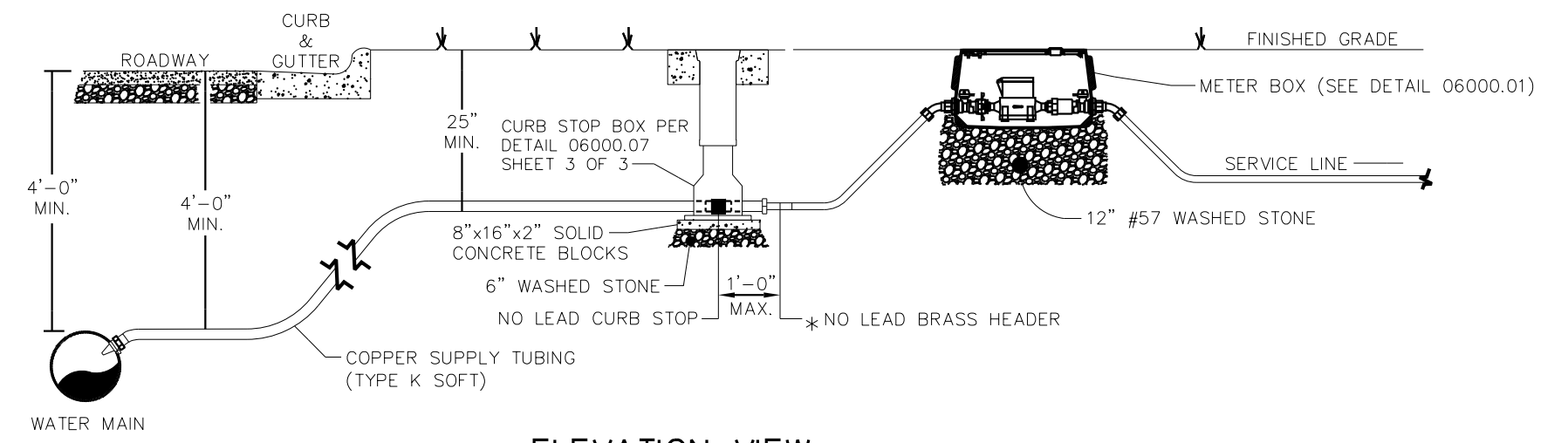
- NOTES:
1. ONCE INSTALLED AND TIGHT, THE STEEL RODS AND BOLTS SHALL BE COATED WITH 2 COATS OF BITUMINOUS BASE PAINT.
 2. CONCRETE SHALL NOT CONTACT BOLTS OR ENDS OF MECHANICAL JOINT BENDS.
 3. MEGALUGS OR RESTRAINED JOINT PIPE AND FITTINGS ARE ALLOWED IN LIEU OF RODDING.
 4. THRUST COLLARS SHALL BE IN ACCORDANCE WITH DETAIL 8/UC-3D.
 5. ALL PIPE AND FITTINGS BETWEEN THRUST COLLARS SHALL BE RODDED.

3 **STANDARD VERTICAL BEND**
 UC-3E SCALE: N.T.S.

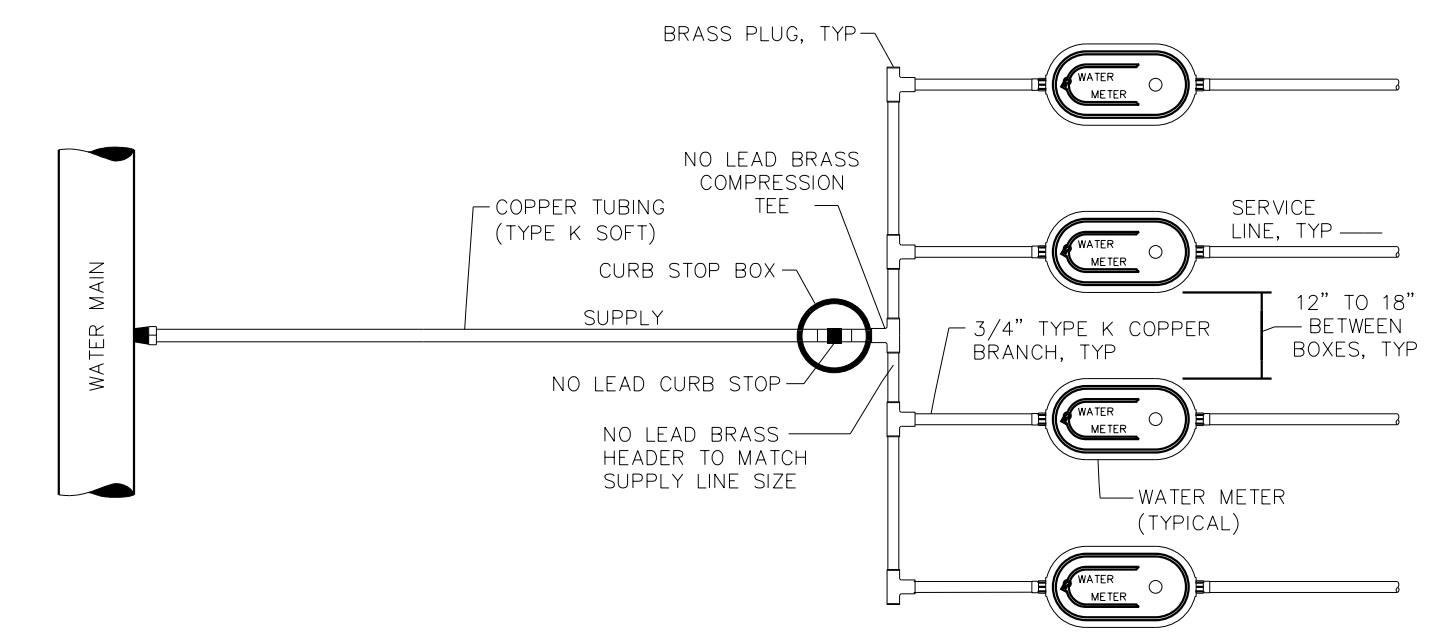
REVISIONS



4 **SANITARY SEWER CLEANOUT TOP**
 UC-3E SCALE: N.T.S.



ELEVATION VIEW



PLAN VIEW

MAXIMUM BRANCH CONNECTIONS	
SUPPLY LINE SIZE (INCHES)	MAXIMUM NUMBER OF BRANCHES
1	1
1.5	2
2	4

- NOTES:
1. THERE SHALL BE NO MULTIPLE CONNECTIONS FROM EXISTING 3/4 INCH SERVICE LINES.
 2. METER BOXES SHALL NOT BE LOCATED IN AREAS SUBJECT TO VEHICULAR TRAFFIC.
 3. NO LEAD CURB STOP SHALL BE CENTERED ON MULTIPLE BRANCH SERVICE.
 4. ALL BRASS COMPONENTS SHALL BE 'NO LEAD' BRASS MEETING UNS C89833 AS PER ASTM B584.

5 **MULTI-GANG METER ASSEMBLY**
 UC-3E SCALE: N.T.S.