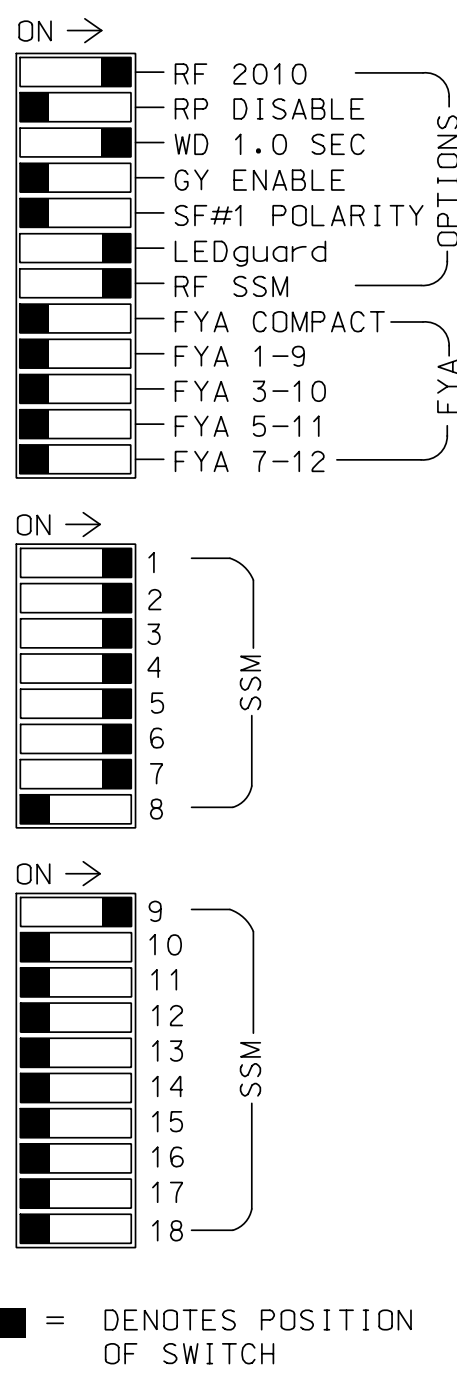
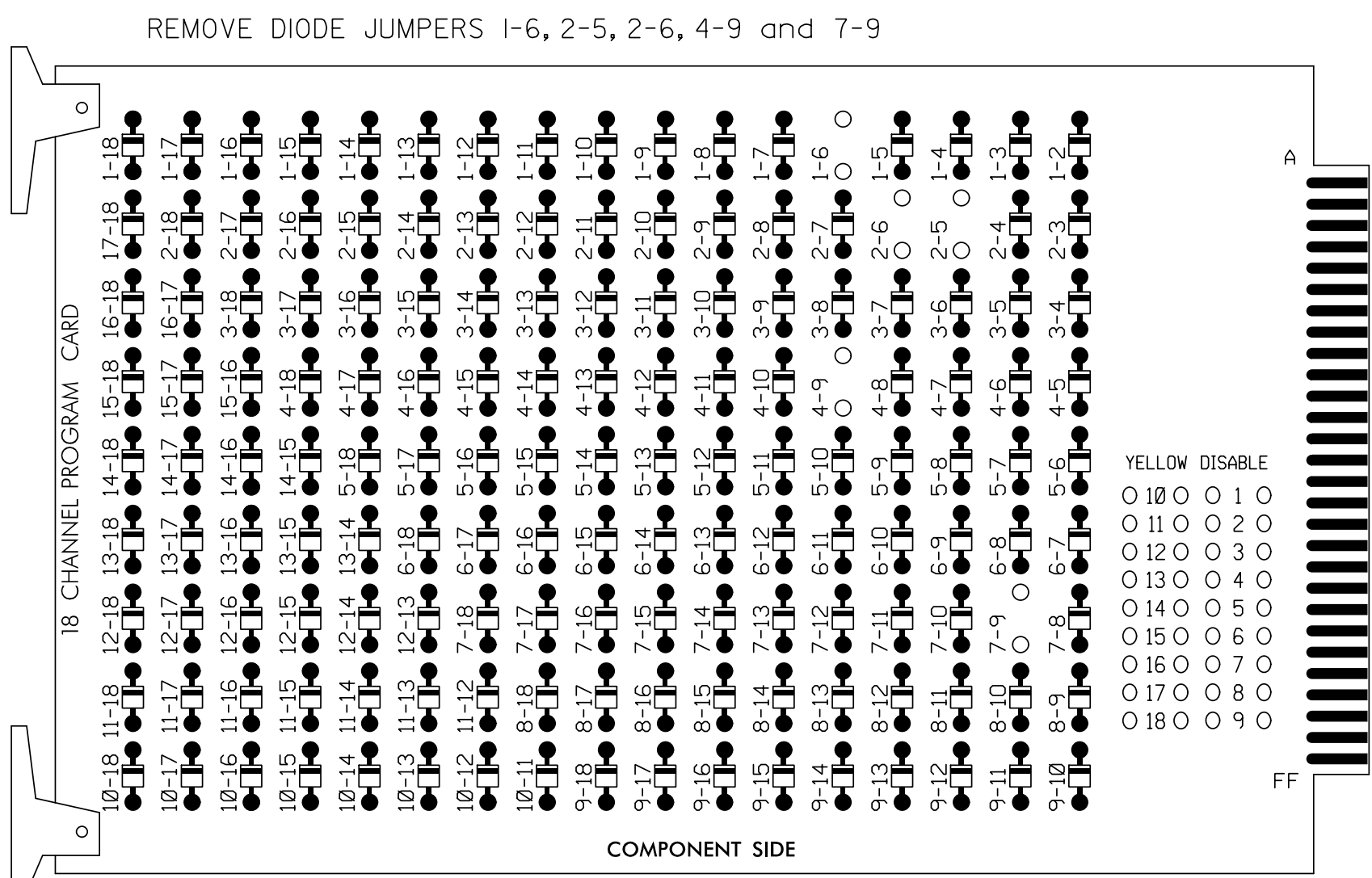


EDI MODEL 2018ECL-NC CONFLICT MONITOR

PROGRAMMING DETAIL

(remove jumpers and set switches as shown)



NOTES:

- Card is provided with all diode jumpers in place. Removal of any jumper allows its channels to run concurrently.
- Ensure jumpers SEL2-SEL5 and SEL9 are present on the monitor board.
- Ensure that Red Enable is active at all times during normal operation.
- Connect serial cable from conflict monitor to comm. port 1 of 2070 controller. Ensure conflict monitor communicates with 2070.

NOTES

- To prevent "flash-conflict" problems, insert red flash program blocks for all unused vehicle load switches in the output file. The installer shall verify that signal heads flash in accordance with the Signal Plans.
- Enable Simultaneous Gap-Out for all Phases.
- Program phases 2 and 6 for Startup In Green.
- Program phases 2 and 6 for Yellow Flash.
- The cabinet and controller are part of the Goldsboro Signal System.

EQUIPMENT INFORMATION

CONTROLLER.....2070
 CABINET.....332 W/ AUX
 SOFTWARE.....ECONOLITE OASIS
 CABINET MOUNT.....BASE
 OUTPUT FILE POSITIONS...18 WITH AUX. OUTPUT FILE
 LOAD SWITCHES USED.....S1,S2,S4,S5,S7,S8,S10,AUX S1
 PHASES USED.....1,2,3,4,5,6*7
 OVERLAP "A".....4+7
 OVERLAP "P".....1+2+3+4+5+6

* USED ONLY DURING PREEMPTION

PROJECT REFERENCE NO.	SHEET NO.
U-5724	SIG.1.1

SIGNAL HEAD HOOK-UP CHART

LOAD SWITCH NO.	S1	S2	S3	S4	S5	S6	S7	S8	S9	S10	S11	S12	AUX S1	AUX S2	AUX S3	AUX S4	AUX S5	AUX S6
CMU CHANNEL NO.	1	2	13	3	4	14	5	6	15	7	8	16	9	10	17	11	12	18
PHASE	1	2	2 PED	3	4	4 PED	5	6	6 PED	7	8	8 PED	OLA	DLB	SPARE	OLC	OLD	SPARE
SIGNAL HEAD NO.	11	23,24	NU	31,32 33	41,42 43	NU	52	61,62	NU	31,41	NU	NU	62	NU	NU	NU	NU	NU
RED		128		116	101			134		*			*					
YELLOW		129		117	102			135										
GREEN		130		118	103			136										
RED ARROW	125							131										
YELLOW ARROW	126							132			123		A122					
GREEN ARROW	127							133			124		A123					

NU = Not Used
 * Denotes install load resistor. See load resistor installation detail this sheet.

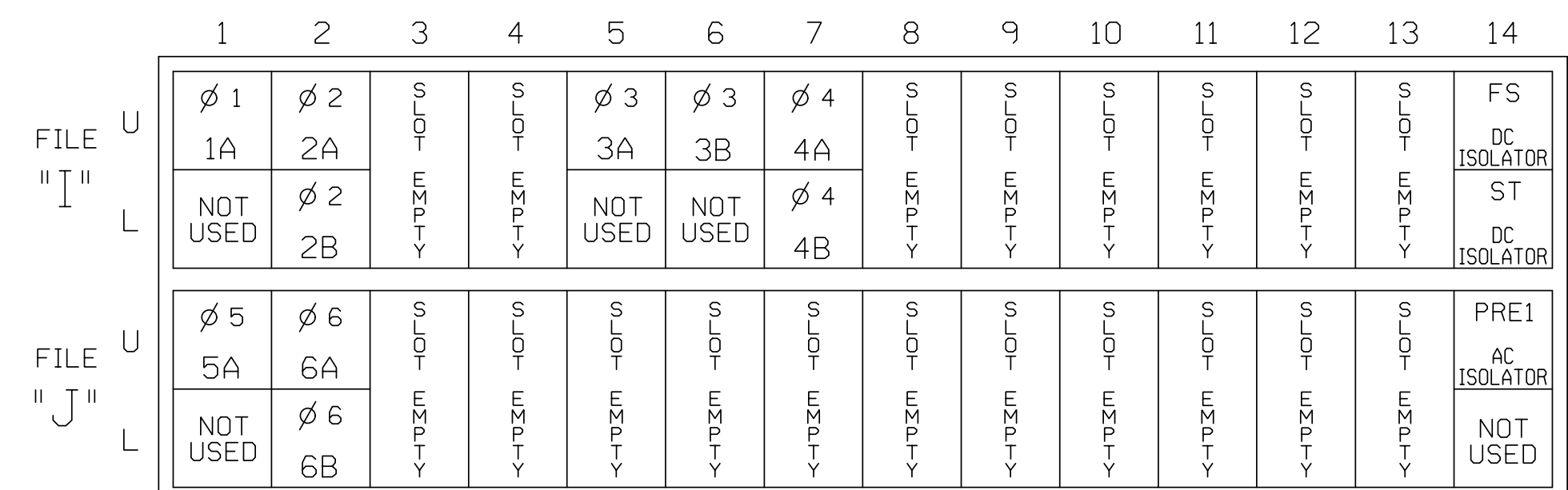
PREEMPT ONLY PHASE OMIT NOTE

(program controller as shown below)

From Main Menu press '2' (Phase Control). Then '1' (Phase Control Functions). Program Phase 7 for 'Omit Phase' and Phases 1, 2, 3, 4, 5 and 6 for 'Startup Calls'. This is to prevent Phase 7 from being served when not in Preempt.

INPUT FILE POSITION LAYOUT

(front view)



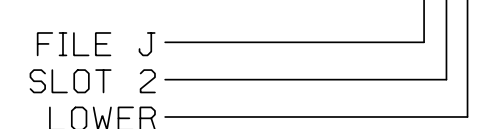
EX.: 1A, 2A, ETC. = LOOP NO.'S

FS = FLASH SENSE
 ST = STOP TIME
 PRE1 = RR PREEMPT

INPUT FILE CONNECTION & PROGRAMMING CHART

LOOP NO.	LOOP TERMINAL	INPUT FILE POS.	PIN NO.	INPUT ASSIGNMENT NO.	DETECTOR NO.	NEMA PHASE	CALL	EXTEND	FULL TIME DELAY	STRETCH TIME	DELAY TIME
1A	TB2-1,2	I1U	56	18	1	1	Y	Y			3
2A	TB2-5,6	I2U	39	1	2	2	Y	Y			
2B	TB2-7,8	I2L	43	5	2	2	Y	Y			
3A	TB4-5,6	I5U	58	20	3	3	Y	Y			3
3B	TB4-9,10	I6U	41	3	4	3	Y	Y			
4A	TB6-1,2	I7U	65	27	34	4	Y	Y			3
4B	TB6-3,4	I7L	78	40	44	4	Y	Y			
5A	TB3-1,2	J1U	55	17	5	5	Y	Y			3
6A	TB3-5,6	J2U	40	2	6	6	Y	Y			
6B	TB3-7,8	J2L	44	6	16	6	Y	Y			

INPUT FILE POSITION LEGEND: J2L



OVERLAP PROGRAMMING DETAIL

(program controller as shown below)

FROM MAIN MENU PRESS '8' (OVERLAPS), THEN '1' (VEHICLE OVERLAP SETTINGS).

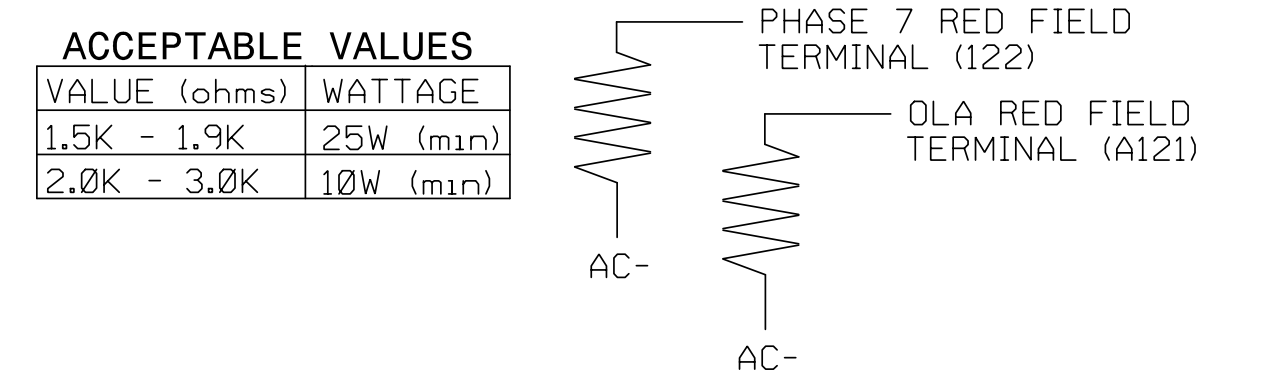
PAGE 1: VEHICLE OVERLAP 'A' SETTINGS
 PHASE: ;12345678910111213141516
 VEH OVL PARENTS: : X X
 VEH OVL NOT VEH: :
 VEH OVL NOT PED: :
 VEH OVL GRN EXT: :
 STARTUP COLOR: - RED - YELLOW - GREEN
 FLASH COLORS: - RED - YELLOW - GREEN
 SELECT VEHICLE OVERLAP OPTIONS: (Y/N)
 FLASH YELLOW IN CONTROLLER FLASH?...N
 GREEN EXTENSION (0=255 SEC).....0
 YELLOW CLEAR (0=PARENT,3-25.5 SEC)...0.0
 RED CLEAR (0=PARENT,0.1-25.5 SEC)...0.0
 OUTPUT AS PHASE # (0=NONE, 1-16)....0

PRESS '_'

PAGE 1: VEHICLE OVERLAP 'P' SETTINGS
 PHASE: ;12345678910111213141516
 VEH OVL PARENTS: :XXXXXX
 VEH OVL NOT VEH: :
 VEH OVL NOT PED: :
 VEH OVL GRN EXT: :
 STARTUP COLOR: - RED - YELLOW - GREEN
 FLASH COLORS: - RED - YELLOW - GREEN
 SELECT VEHICLE OVERLAP OPTIONS: (Y/N)
 FLASH YELLOW IN CONTROLLER FLASH?...N
 GREEN EXTENSION (0=255 SEC).....0
 YELLOW CLEAR (0=PARENT,3-25.5 SEC)...0.0
 RED CLEAR (0=PARENT,0.1-25.5 SEC)...0.0
 OUTPUT AS PHASE # (0=NONE, 1-16)....0

OVERLAP PROGRAMMING COMPLETE

LOAD RESISTOR INSTALLATION DETAIL



NOTE: The purpose of this resistor is to load the channel red monitor input in order for the Signal Sequence Monitor to use the full signal sequence monitoring capability on channels that do not use the red display in the field.

THIS ELECTRICAL DETAIL IS FOR THE SIGNAL DESIGN: 04-0556T1
 DESIGNED: December 2018
 SEALED: 6/30/20
 REVISED: N/A

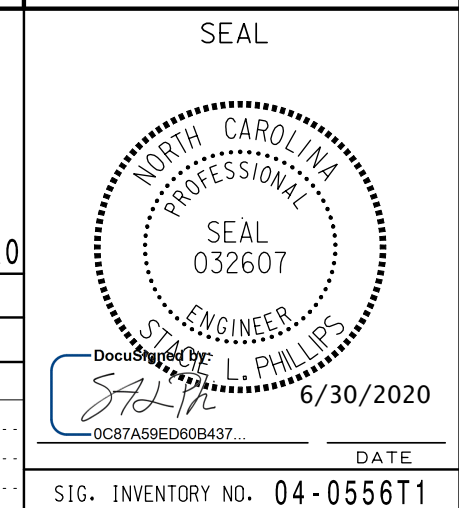
Temporary Design 1
 Electrical Detail - Sheet 1 of 2

ELECTRICAL AND PROGRAMMING DETAILS FOR:



US 13 (BERKELEY BLVD.)		AT	
SR 1560 (ROYALL AVE.) & SR 1709 (CENTRAL HTS. RD.)		WAYNE COUNTY	
DIVISION 4		GOLDSBORO	
PLAN DATE: DECEMBER 2018	REVIEWED BY: SL PHILLIPS		
PREPARED BY: SP PENNINGTON	REVIEWED BY:		
REVISIONS	INIT.	DATE	

DOCUMENT NOT CONSIDERED FINAL UNLESS ALL SIGNATURES COMPLETED



PLANS PREPARED IN THE OFFICE OF:
Kimley-Horn
 NC License #F-0102
 421 Fayetteville Street, Suite 600
 Raleigh, NC 27601
 (919) 677-2000

750 N. Greenfield Pkwy, Garner, NC 27529

SIG. INVENTORY NO. 04-0556T1