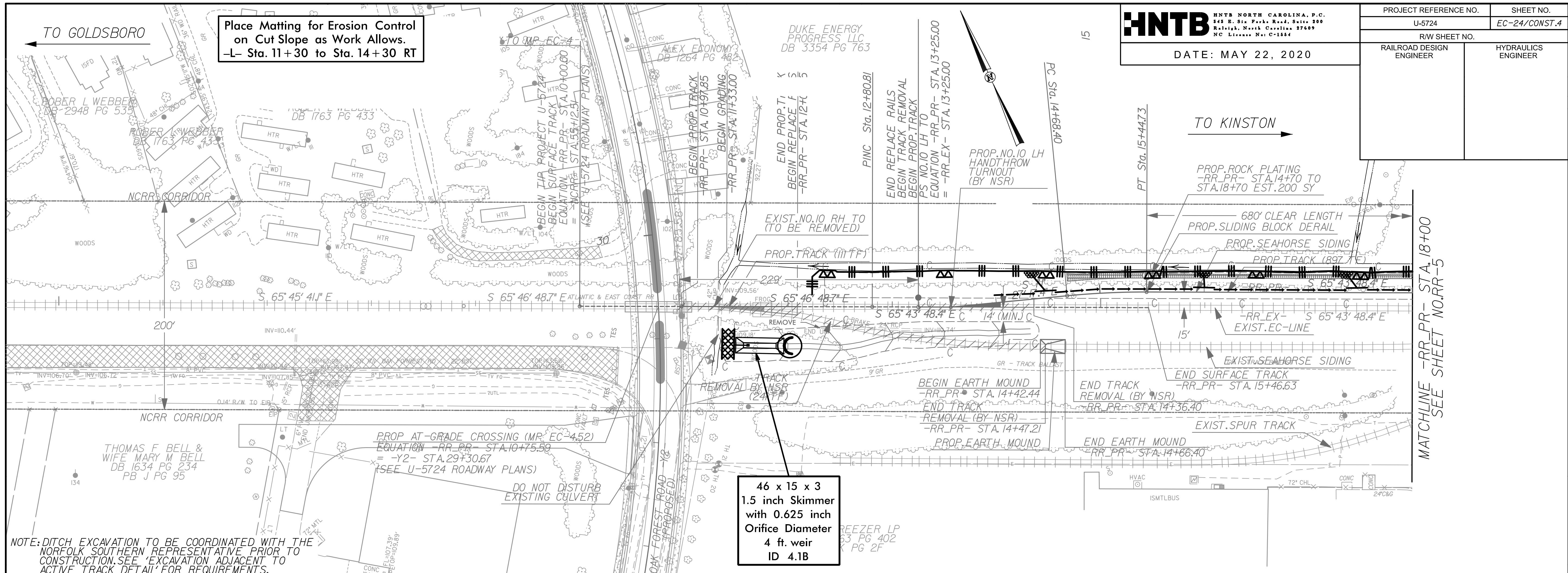


DATE: MAY 22, 2020



NOTE: DITCH EXCAVATION TO BE COORDINATED WITH THE NORFOLK SOUTHERN REPRESENTATIVE PRIOR TO CONSTRUCTION. SEE 'EXCAVATION ADJACENT TO ACTIVE TRACK DETAIL' FOR REQUIREMENTS.

