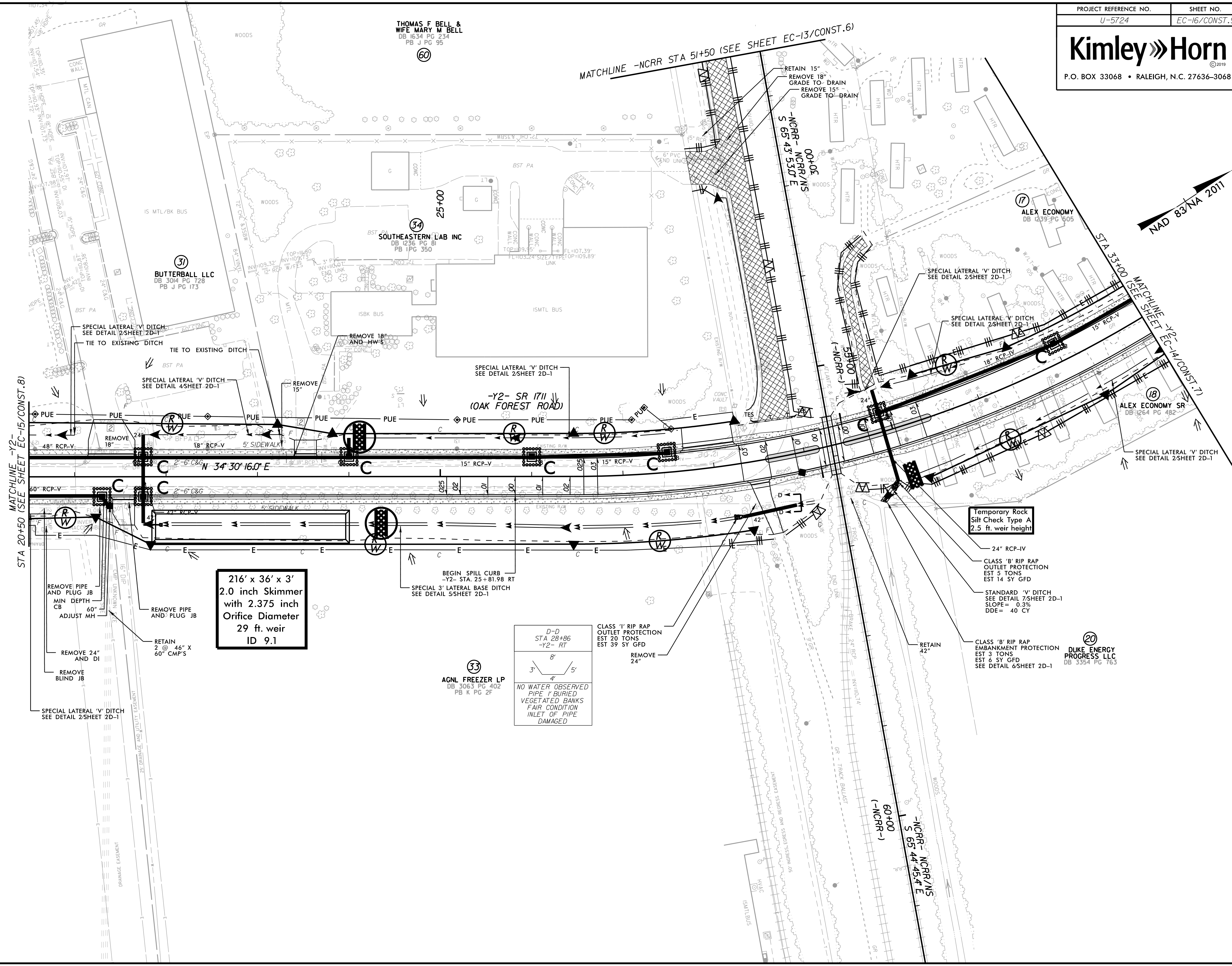


REVISIONS

2/19/2020 K:\PAL_Roadway\01036333 - U-5724 (Central Heights)\Environmental\Design\U-5724_ec_psh_16.dgn



216' x 36' x 3'
 2.0 inch Skimmer
 with 2.375 inch
 Orifice Diameter
 29 ft. weir
 ID 9.1

D-D
 STA 28+86
 -Y2- RT
 8'
 3' 4' 5'
 NO WATER OBSERVED
 PIPE 1' BURIED
 VEGETATED BANKS
 FAIR CONDITION
 INLET OF PIPE
 DAMAGED

Temporary Rock
 Silt Check Type A
 2.5 ft. weir height

24" RCP-IV
 CLASS 'B' RIP RAP
 OUTLET PROTECTION
 EST 5 TONS
 EST 14 SY GFD

CLASS 'B' RIP RAP
 EMBANKMENT PROTECTION
 EST 3 TONS
 EST 6 SY GFD
 SEE DETAIL 6/SHEET 2D-1

33
 AGNL FREEZER LP
 DB 3063 PG 402
 PB K PG 2F

20
 DUKE ENERGY
 PROGRESS LLC
 DB 3354 PG 763

MATCHLINE -Y2- STA 20+50 (SEE SHEET EC-15/CONST.8)

MATCHLINE -NCRR STA 51+50 (SEE SHEET EC-13/CONST.6)

MATCHLINE -Y2- STA 33+00 (SEE SHEET EC-14/CONST.7)

THOMAS F BELL &
 WIFE MARY M BELL
 DB 1634 PG 234
 PB J PG 95
 60

34
 SOUTHEASTERN LAB INC
 DB 1236 PG 81
 PB 1PG 350

31
 BUTTERBALL LLC
 DB 3014 PG 728
 PB J PG 173

17
 ALEX ECONOMY
 DB 1239 PG 605

18
 ALEX ECONOMY SR
 DB 1264 PG 482

REMOVE PIPE
 AND PLUG JB
 MIN DEPTH
 CB
 60"
 ADJUST MH

REMOVE PIPE
 AND PLUG JB

RETAIN
 2 @ 46" X
 60" CMP'S

SPECIAL LATERAL 'V' DITCH
 SEE DETAIL 2/SHEET 2D-1

BEGIN SPILL CURB
 -Y2- STA. 25+81.98 RT
 SPECIAL 3' LATERAL BASE DITCH
 SEE DETAIL 5/SHEET 2D-1

CLASS '1' RIP RAP
 OUTLET PROTECTION
 EST 20 TONS
 EST 39 SY GFD
 REMOVE
 24"

STANDARD 'V' DITCH
 SEE DETAIL 7/SHEET 2D-1
 SLOPE = 0.3%
 DDE = 40 CY

SPECIAL LATERAL 'V' DITCH
 SEE DETAIL 2/SHEET 2D-1

SPECIAL LATERAL 'V' DITCH
 SEE DETAIL 2/SHEET 2D-1

SPECIAL LATERAL 'V' DITCH
 SEE DETAIL 2/SHEET 2D-1

-Y2- SR 1711
 (OAK FOREST ROAD)

SPECIAL LATERAL 'V' DITCH
 SEE DETAIL 2/SHEET 2D-1
 TIE TO EXISTING DITCH

SPECIAL LATERAL 'V' DITCH
 SEE DETAIL 4/SHEET 2D-1

REMOVE 15"

REMOVE 18"
 AND HW'S

RETAIN 15"
 GRADE TO DRAIN
 REMOVE 15"
 GRADE TO DRAIN

04+06
 -NCRR- NCRR/NS
 S 65 43' 53.0" E

60+00
 (-NCRR-)
 S 65 44' 45.4" E

60+00
 (-NCRR-)
 S 65 44' 45.4" E

60+00
 (-NCRR-)
 S 65 44' 45.4" E

60+00
 (-NCRR-)
 S 65 44' 45.4" E

60+00
 (-NCRR-)
 S 65 44' 45.4" E

60+00
 (-NCRR-)
 S 65 44' 45.4" E