

REVISIONS

GRASS SWALE DATA
 DA = 11.6 AC
 SLOPE = 0.23%
 L REQ = 1156 FT
 L PRO = 700 FT
 Q2 = 13.4 CFS
 V2 = 1.7 FPS
 D2 = 1.33 FT
 Q10 = 17.1 CFS
 V10 = 1.8 FPS
 D10 = 1.47 FT

C-C
 STA 19+74
 -Y2- LT

20'

5' 7' 5'

2' WATER DEPTH
 VEGETATED BANKS
 GOOD CONDITION

108' x 27' x 3'
 1.5 inch Skimmer
 with 1.5 inch
 Orifice Diameter
 11 ft. weir
 ID 8.1

CLASS '1' RIP RAP
 OUTLET PROTECTION
 (BANKS ONLY)
 EST 48 TONS
 EST 89 SY GFD

CLASS 'B' RIP RAP
 OUTLET PROTECTION
 EST 3 TONS
 EST 10 SY GFD

MIN DEPTH CB
 REMOVE 54'

SPECIAL LATERAL 'V' DITCH
 SEE DETAIL 2/SHEET 2D-1

Temporary Rock
 Silt Check Type A
 2.25ft. weir height

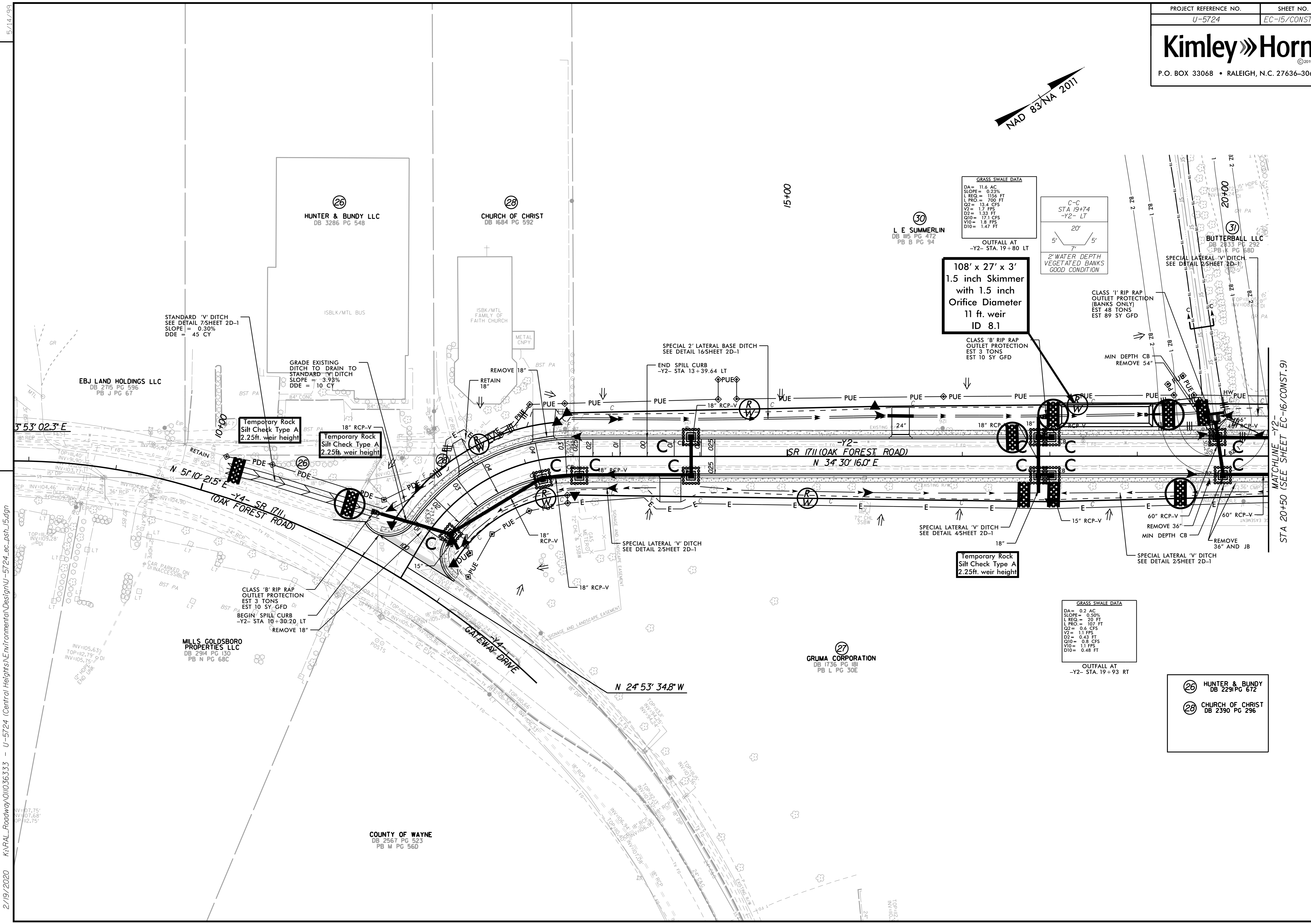
GRASS SWALE DATA
 DA = 0.2 AC
 SLOPE = 0.50%
 L REQ = 20 FT
 L PRO = 107 FT
 Q2 = 0.6 CFS
 V2 = 1.1 FPS
 D2 = 0.45 FT
 Q10 = 0.8 CFS
 V10 = 1.1 FPS
 D10 = 0.48 FT

OUTFALL AT
 -Y2- STA. 19+93 RT

26 HUNTER & BUNDY
 DB 2291 PG 672

28 CHURCH OF CHRIST
 DB 2390 PG 296

MATCHLINE -Y2-
 STA 20+50 (SEE SHEET EC-16/CONST. 9)



2/19/2020 K:\RAL_Roadway\01036333 - U-5724 (Central Heights)\Environmental\Design\U-5724_ec_psh_15.dgn

5/14/99

COUNTY OF WAYNE
 DB 2567 PG 523
 PB M PG 560

27 GRUMA CORPORATION
 DB 1736 PG 181
 PB L PG 30E

MILLS GOLDSBORO
 PROPERTIES LLC
 DB 2384 PG 130
 PB N PG 68C

EBJ LAND HOLDINGS LLC
 DB 2715 PG 596
 PB J PG 67

26 HUNTER & BUNDY LLC
 DB 3286 PG 548

28 CHURCH OF CHRIST
 DB 1684 PG 592

30 L E SUMMERLIN
 DB 1155 PG 472
 PB B PG 94

31 BUTTERBALL LLC
 DB 2833 PG 292
 PB K PG 58D