

**CLEARING AND GRUBBING
EROSION CONTROL FOR
CONSTRUCTION SHEET 8**

GRASS SWALE DATA
 DA = 11.6 AC
 SLOPE = 0.23%
 L REQ = 1150 FT
 L PRO = 700 FT
 Q2 = 13.4 CFS
 V2 = 1.2 FPS
 D2 = 1.33 FT
 Q10 = 17.1 CFS
 V10 = 1.8 FPS
 D10 = 1.47 FT

C-C
 STA 19+74
 -Y2- LT
 20'
 5' 7' 5'
 2' WATER DEPTH
 VEGETATED BANKS
 GOOD CONDITION

108' x 27' x 3'
 1.5 inch Skimmer
 with 1.5 inch
 Orifice Diameter
 11 ft weir
 ID 8.1

SEE CULVERT CONSTRUCTION
 SEQUENCE SHEET EC-8A

GRASS SWALE DATA
 DA = 0.2 AC
 SLOPE = 0.50%
 L REQ = 20 FT
 L PRO = 107 FT
 Q2 = 0.6 CFS
 V2 = 1.1 FPS
 D2 = 0.45 FT
 Q10 = 0.8 CFS
 V10 = 1.1 FPS
 D10 = 0.48 FT

OUTFALL AT
 -Y2- STA. 19+93 RT

 ENVIRONMENTALLY SENSITIVE AREA
 SEE PROJECT SPECIAL PROVISIONS

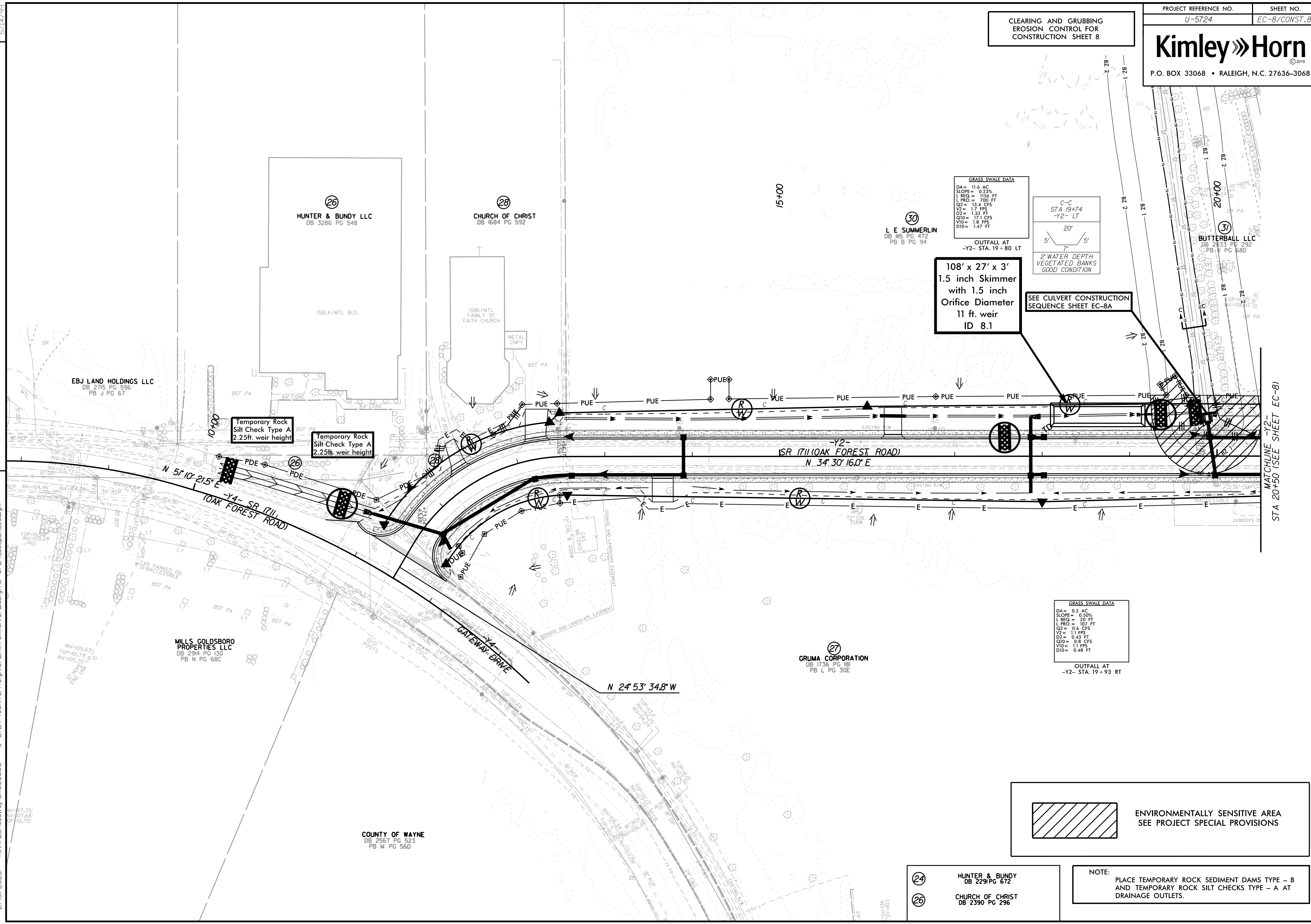
- 24 HUNTER & BUNDY
DB 2291 PG 672
- 26 CHURCH OF CHRIST
DB 2390 PG 296

NOTE:
 PLACE TEMPORARY ROCK SEDIMENT DAMS TYPE - B
 AND TEMPORARY ROCK SILT CHECKS TYPE - A AT
 DRAINAGE OUTLETS.

REVISIONS

5/14/1999

2/19/2020 K:\RAL_Roadway\01036333 - U-5724 (Central Heights)\Environmental\Design\U-5724_ec_pst_08.dgn



MATCHLINE -Y2-
 STA 20+50 (SEE SHEET EC-8)