

6/2/99

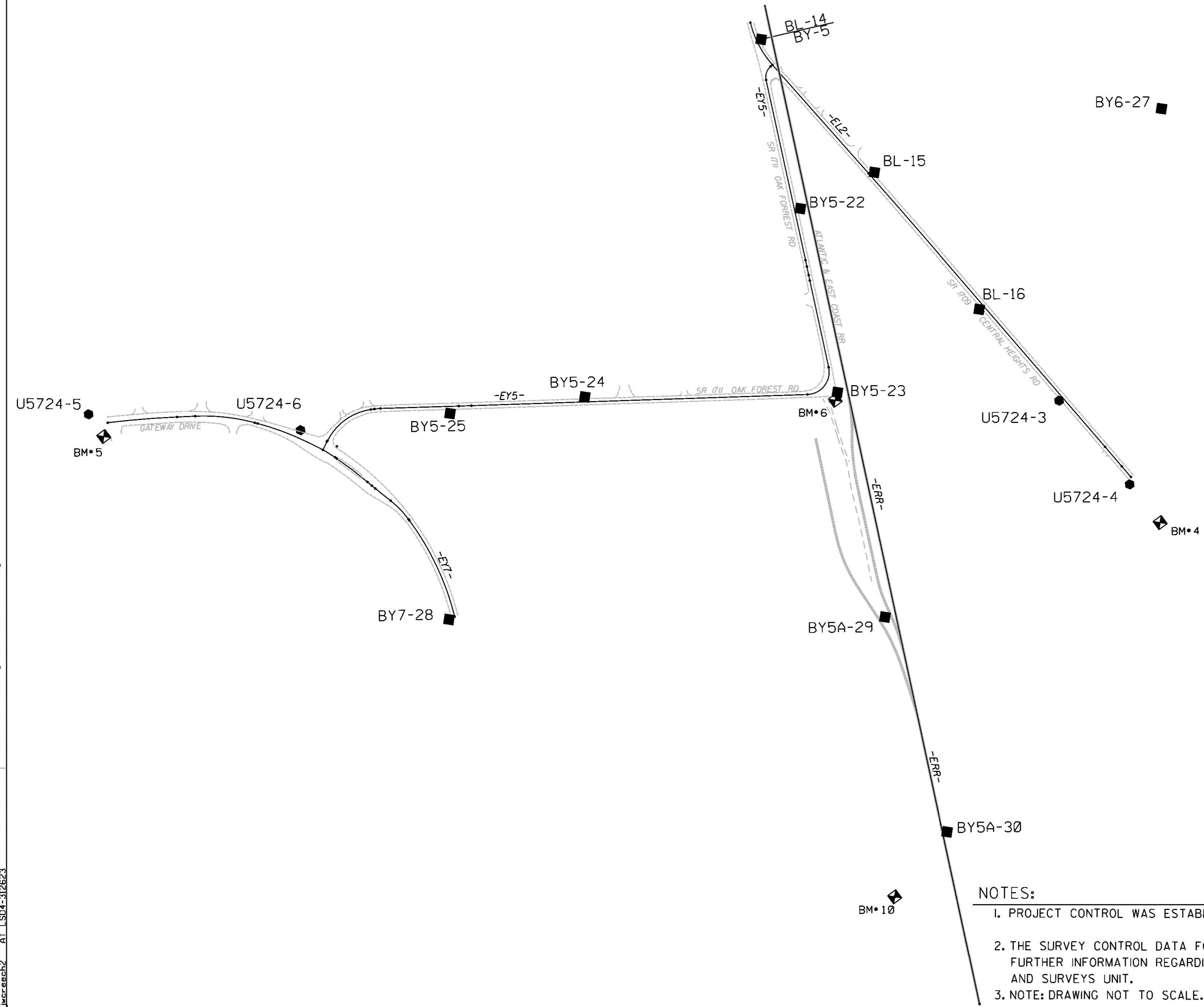
PROJECT REFERENCE NO.	SHEET NO.
U-5724	RW02C-2
Location and Surveys	

SURVEY CONTROL SHEET U-5724

W/ EXISTING CENTERLINE ALIGNMENTS PRIOR TO CONSTRUCTION

BY6-26

REVISIONS



- NOTES:**
1. PROJECT CONTROL WAS ESTABLISHED USING GNSS, THE GLOBAL NAVIGATION SATELLITE SYSTEM.
 2. THE SURVEY CONTROL DATA FOR THIS PROJECT HAS BEEN COMPILED FROM VARIOUS SOURCES. IF FURTHER INFORMATION REGARDING PROJECT CONTROL IS NEEDED, PLEASE CONTACT THE LOCATION AND SURVEYS UNIT.
 3. NOTE: DRAWING NOT TO SCALE.

I:\MS-2020-08556_Drive\Projects\U-5724-STIP\RW_Sheets for revising\U5724.ls.rw02c-2.dgn
 U5724-2.dwg
 6/2/2020 10:08:56
 jwreelch