

5/14/1999

PROJECT REFERENCE NO. U-5724	SHEET NO. 16
ROADWAY DESIGN ENGINEER	HYDRAULICS ENGINEER
DOCUMENT NOT CONSIDERED FINAL UNLESS ALL SIGNATURES COMPLETED	

BM #2
BONNET BOLT
-Y3- STA 10+46.49 (33.90' LT)
ELEV = 115.56'

CULVERT HYDRAULIC DATA
1 @ 18" RCP
(NOT BURIED)
DESIGN DISCHARGE = 2.60 CFS
DESIGN FREQUENCY = 25 YRS
DESIGN HW ELEVATION = 111.42 FT
BASE DISCHARGE = 3.00 CFS
BASE FREQUENCY = 100 YRS
BASE HW ELEVATION = 111.50 FT
OVERTOPPING DISCHARGE = 8.0 CFS
OVERTOPPING FREQUENCY = 100 YR
OVERTOPPING ELEVATION = 112.40 FT

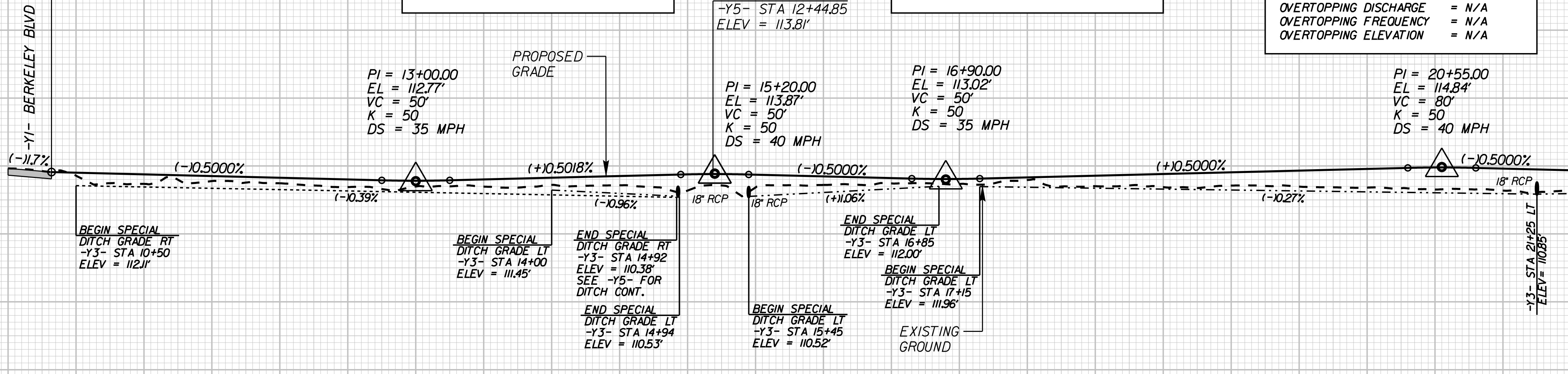
CULVERT HYDRAULIC DATA
1 @ 18" RCP
(NOT BURIED)
DESIGN DISCHARGE = 2.40 CFS
DESIGN FREQUENCY = 25 YRS
DESIGN HW ELEVATION = 111.36 FT
BASE DISCHARGE = 2.80 CFS
BASE FREQUENCY = 100 YRS
BASE HW ELEVATION = 111.44 FT
OVERTOPPING DISCHARGE = 9.0 CFS
OVERTOPPING FREQUENCY = 100 YR
OVERTOPPING ELEVATION = 112.50 FT

CULVERT HYDRAULIC DATA
1 @ 18" RCP
(NOT BURIED)
DESIGN DISCHARGE = 5.80 CFS
DESIGN FREQUENCY = 25 YRS
DESIGN HW ELEVATION = 112.28 FT
BASE DISCHARGE = 6.80 CFS
BASE FREQUENCY = 100 YRS
BASE HW ELEVATION = 112.45 FT
OVERTOPPING DISCHARGE = N/A
OVERTOPPING FREQUENCY = N/A
OVERTOPPING ELEVATION = N/A

BEGIN GRADE
-Y3- STA 10+32.00
ELEV = 114.11'
TIE TO EXIST PVMT

-Y3- STA 15+18.71
-Y5- STA 12+44.85
ELEV = 113.81'

PI = 20+55.00
EL = 114.84'
VC = 80'
K = 50
DS = 40 MPH

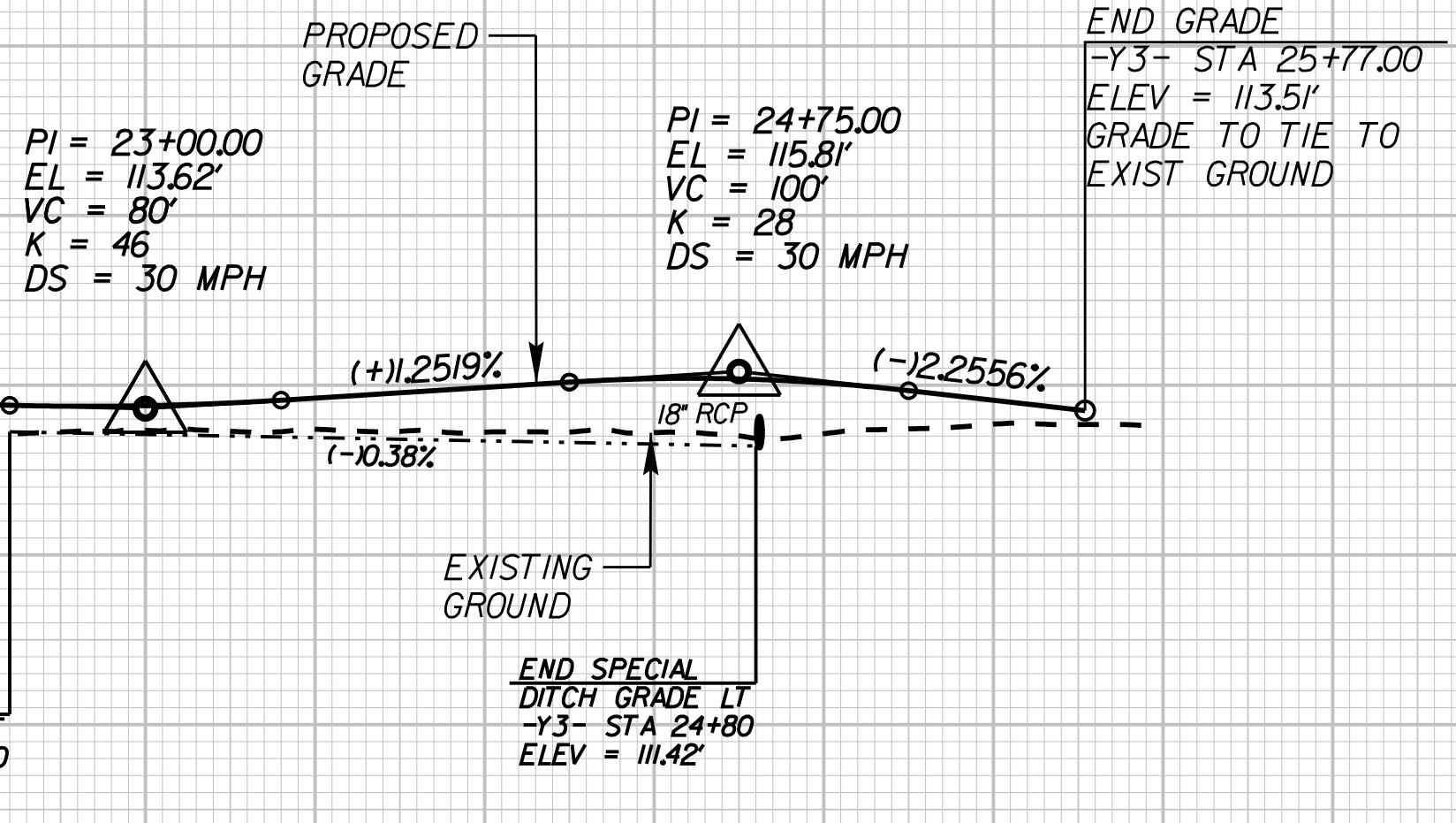


-Y3- SERVICE ROAD 1

SEE SHEET NO.5 FOR -Y3- PLAN

10 11 12 13 14 15 16 17 18 19 20 21 22

CULVERT HYDRAULIC DATA
1 @ 18" RCP
(NOT BURIED)
DESIGN DISCHARGE = 2.50 CFS
DESIGN FREQUENCY = 25 YRS
DESIGN HW ELEVATION = 112.30 FT
BASE DISCHARGE = 3.00 CFS
BASE FREQUENCY = 100 YRS
BASE HW ELEVATION = 112.39 FT
OVERTOPPING DISCHARGE = N/A
OVERTOPPING FREQUENCY = N/A
OVERTOPPING ELEVATION = N/A



-Y3- SERVICE ROAD 1

SEE SHEET NO.6 FOR -Y3- PLAN

21 22 23 24 25 26

REVISIONS

K:\RAL_Roadway\01036333 - U-5724 (Central Heights)\Roadway\Proj\U-5724_Lrdy_pl.fgdgn

10/10/2022