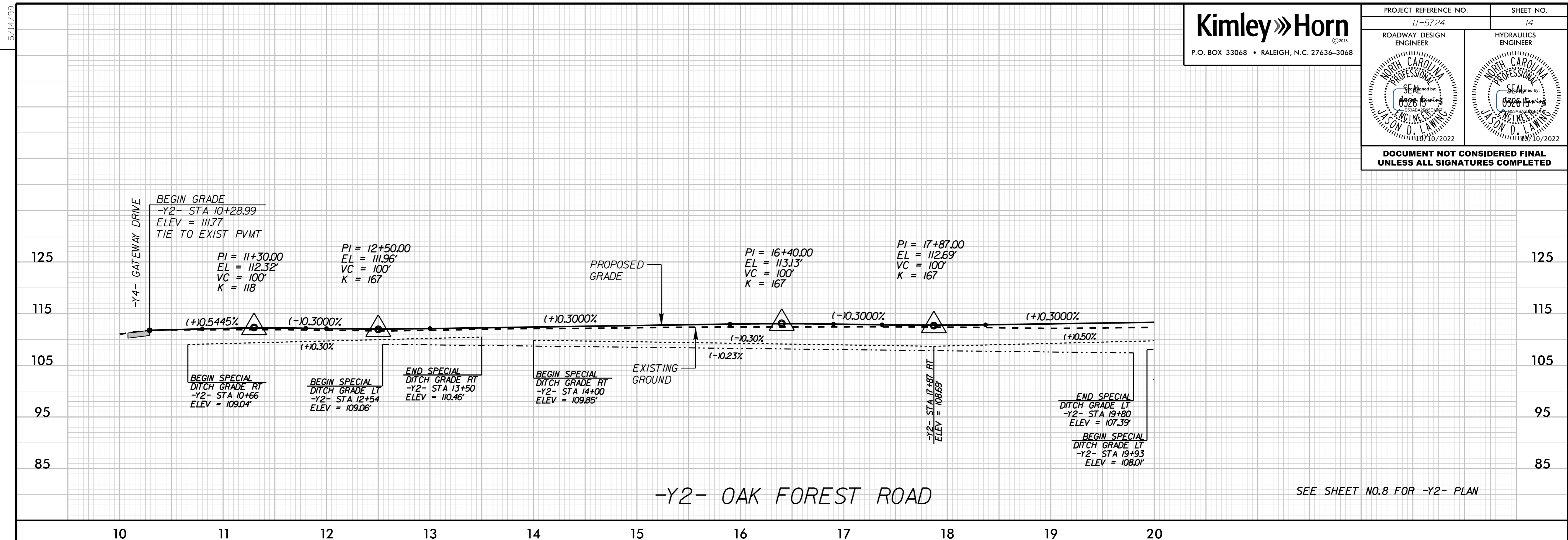
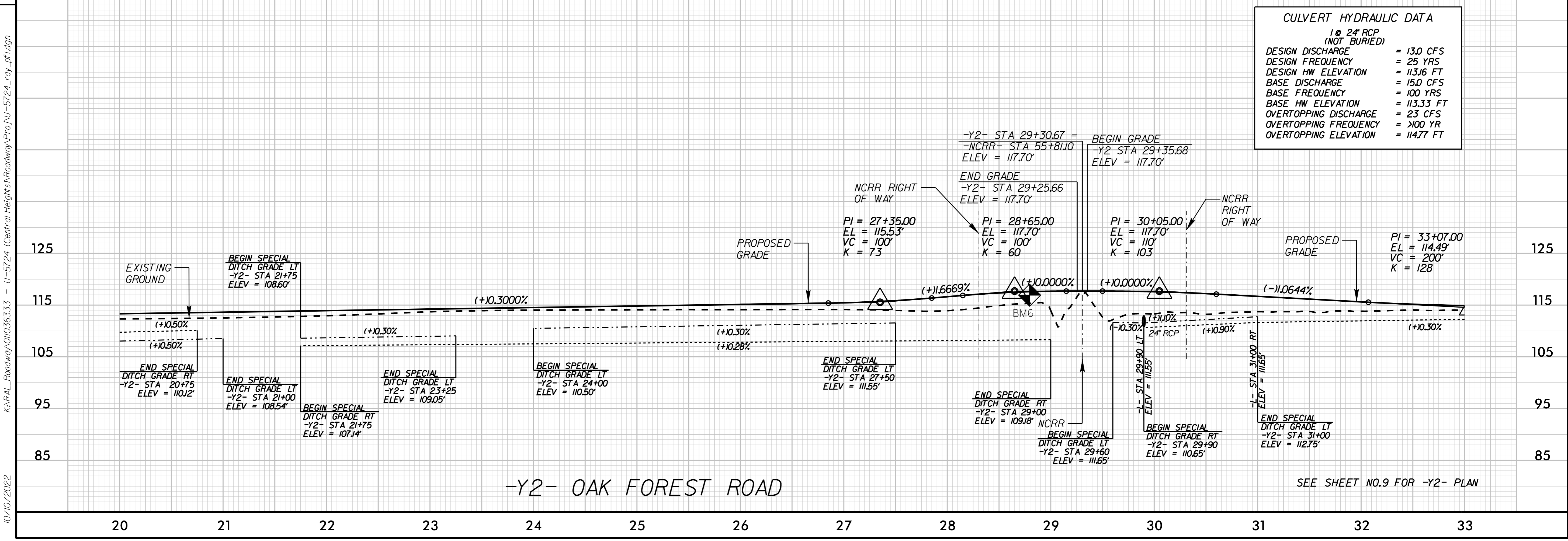


| | |
|--|---------------------|
| PROJECT REFERENCE NO. U-5724 | SHEET NO. 14 |
| ROADWAY DESIGN ENGINEER | HYDRAULICS ENGINEER |
| | |
| DOCUMENT NOT CONSIDERED FINAL UNLESS ALL SIGNATURES COMPLETED | |

REVISIONS



| CULVERT HYDRAULIC DATA | |
|--------------------------|-------------|
| 1 @ 24" RCP (NOT BURIED) | |
| DESIGN DISCHARGE | = 13.0 CFS |
| DESIGN FREQUENCY | = 25 YRS |
| DESIGN HW ELEVATION | = 113.16 FT |
| BASE DISCHARGE | = 15.0 CFS |
| BASE FREQUENCY | = 100 YRS |
| BASE HW ELEVATION | = 113.33 FT |
| OVERTOPPING DISCHARGE | = 23 CFS |
| OVERTOPPING FREQUENCY | = >100 YR |
| OVERTOPPING ELEVATION | = 114.77 FT |



K:\RAL_Roadway\101036333 - U-5724 (Central Heights)\Roadway\Proj\U-5724_Lrdy_pl.rdg
10/10/2022