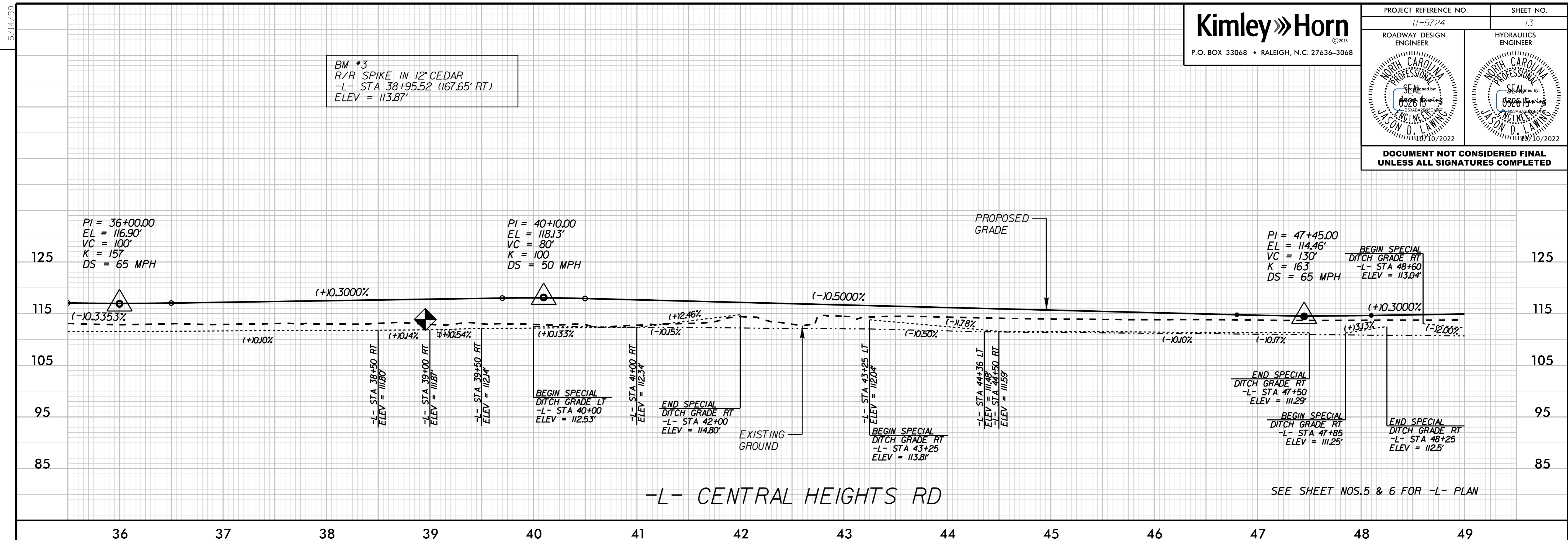


PROJECT REFERENCE NO. U-5724	SHEET NO. 13
ROADWAY DESIGN ENGINEER	HYDRAULICS ENGINEER
<b>DOCUMENT NOT CONSIDERED FINAL UNLESS ALL SIGNATURES COMPLETED</b>	

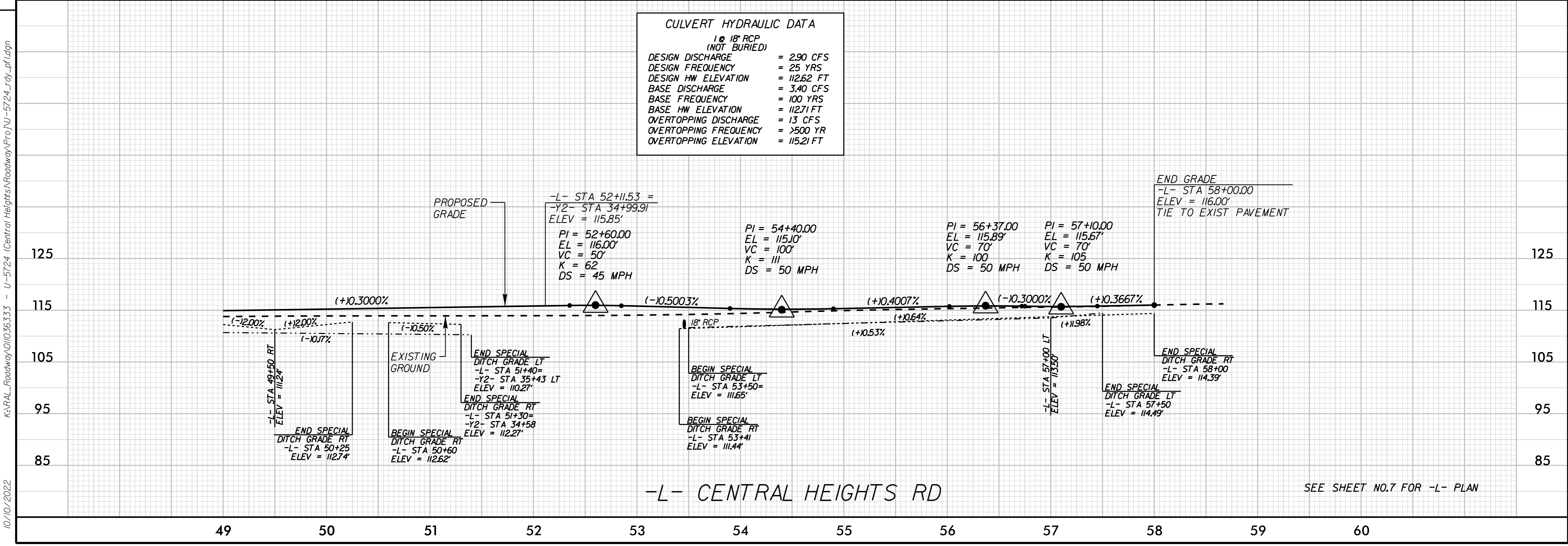
REVISIONS



**CULVERT HYDRAULIC DATA**

1 @ 18" RCP  
(NOT BURIED)

DESIGN DISCHARGE	= 2.90 CFS
DESIGN FREQUENCY	= 25 YRS
DESIGN HW ELEVATION	= 112.62 FT
BASE DISCHARGE	= 3.40 CFS
BASE FREQUENCY	= 100 YRS
BASE HW ELEVATION	= 112.71 FT
OVERTOPPING DISCHARGE	= 13 CFS
OVERTOPPING FREQUENCY	= >500 YR
OVERTOPPING ELEVATION	= 115.21 FT



K:\RAL\_Roadway\101036333 - U-5724 (Central Heights)\Roadway\Proj\U-5724\_Lrdy\_pl.rdg  
10/10/2022