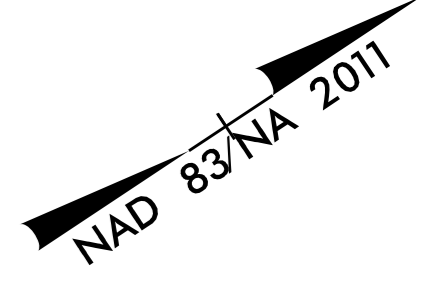
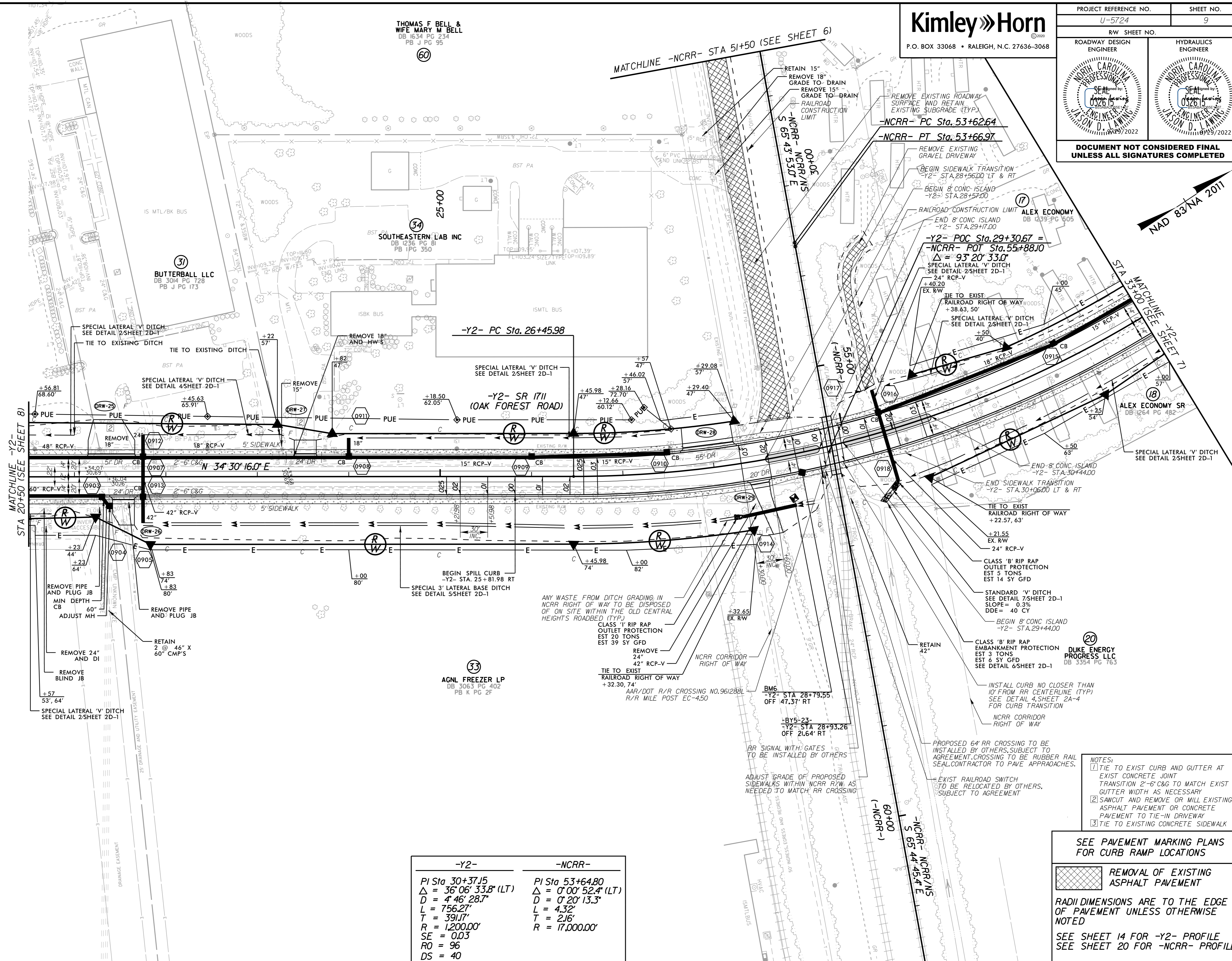


PROJECT REFERENCE NO. U-5724		SHEET NO. 9	
RW SHEET NO.			
ROADWAY DESIGN ENGINEER		HYDRAULICS ENGINEER	
DOCUMENT NOT CONSIDERED FINAL UNLESS ALL SIGNATURES COMPLETED			



REVISIONS



-Y2-	-NCR-
PI Sta 30+37.15	PI Sta 53+64.80
$\Delta = 36' 06'' 33.8''$ (LT)	$\Delta = 0' 00'' 52.4''$ (LT)
$D = 4' 46'' 28.7''$	$D = 0' 20'' 13.3''$
$L = 756.27'$	$L = 4.32'$
$T = 391.17'$	$T = 2.16'$
$R = 1,200.00'$	$R = 17,000.00'$
$SE = 0.03$	
$RO = 96$	
$DS = 40$	

- NOTES:
- TIE TO EXIST CURB AND GUTTER AT EXIST CONCRETE JOINT. TRANSITION 2'-6" C&G TO MATCH EXIST GUTTER WIDTH AS NECESSARY.
 - SAWCUT AND REMOVE OR MILL EXISTING ASPHALT PAVEMENT OR CONCRETE PAVEMENT TO TIE-IN DRIVEWAY.
 - TIE TO EXISTING CONCRETE SIDEWALK.

SEE PAVEMENT MARKING PLANS FOR CURB RAMP LOCATIONS

REMOVAL OF EXISTING ASPHALT PAVEMENT

RADI DIMENSIONS ARE TO THE EDGE OF PAVEMENT UNLESS OTHERWISE NOTED

SEE SHEET 14 FOR -Y2- PROFILE
SEE SHEET 20 FOR -NCR- PROFILE

9/29/2022 K:\RAL_Roadway\010363333 - U-5724 (Central Heights)\Roadway\Proj\U-5724_rdy_psh_09.dgn