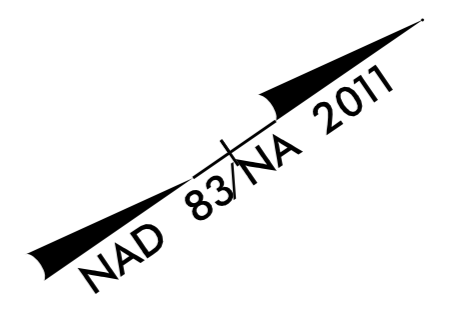
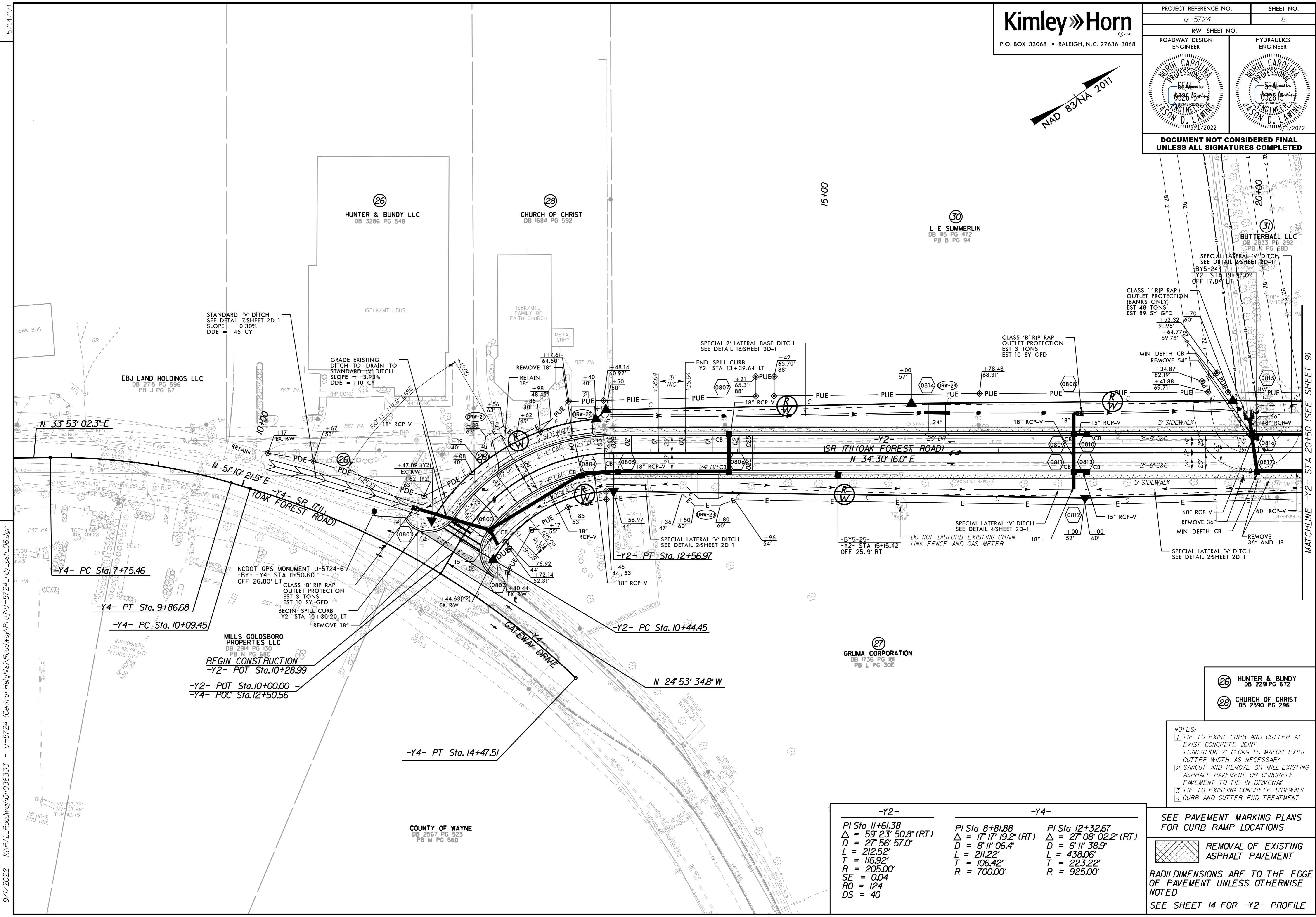


PROJECT REFERENCE NO. U-5724		SHEET NO. 8	
RW SHEET NO.		HYDRAULICS ENGINEER	
ROADWAY DESIGN ENGINEER		HYDRAULICS ENGINEER	



**DOCUMENT NOT CONSIDERED FINAL  
UNLESS ALL SIGNATURES COMPLETED**

REVISIONS



-Y2-	-Y4-
PI Sta 11+61.38	PI Sta 8+81.88
$\Delta = 59^\circ 23' 50.8''$ (RT)	$\Delta = 17^\circ 17' 19.2''$ (RT)
$D = 27^\circ 56' 57.0''$	$D = 8^\circ 11' 06.4''$
$L = 212.52'$	$L = 211.22'$
$T = 116.92'$	$T = 106.42'$
$R = 205.00'$	$R = 700.00'$
$SE = 0.04$	
$RO = 124$	
$DS = 40$	

- NOTES:
- TIE TO EXIST CURB AND GUTTER AT EXIST CONCRETE JOINT
  - TRANSITION 2'-6" C&G TO MATCH EXIST GUTTER WIDTH AS NECESSARY
  - SAWCUT AND REMOVE OR MILL EXISTING ASPHALT PAVEMENT OR CONCRETE PAVEMENT TO TIE-IN DRIVEWAY
  - TIE TO EXISTING CONCRETE SIDEWALK
  - CURB AND GUTTER END TREATMENT

**SEE PAVEMENT MARKING PLANS FOR CURB RAMP LOCATIONS**

REMOVAL OF EXISTING ASPHALT PAVEMENT

RADI DIMENSIONS ARE TO THE EDGE OF PAVEMENT UNLESS OTHERWISE NOTED

SEE SHEET 14 FOR -Y2- PROFILE

9/11/2022 K:\RAL\_Roadway\01036333 - U-5724 (Central Heights)\Roadway\Proj\U-5724\_rdy\_pst\_08.dgn

5/14/1999

COUNTY OF WAYNE  
DB 2567 PG 523  
PB M PG 560

(26) HUNTER & BUNDY  
DB 2291 PG 672

(28) CHURCH OF CHRIST  
DB 2390 PG 296

MATCHLINE -Y2- STA 20+50 (SEE SHEET 9)