

5/14/2019

REVISIONS

10/10/2022 K:\RAL_Roadway\010363333 - U-5724 (Central Heights)Roadway\Proj\U-5724_rdy_pst_06.dgn

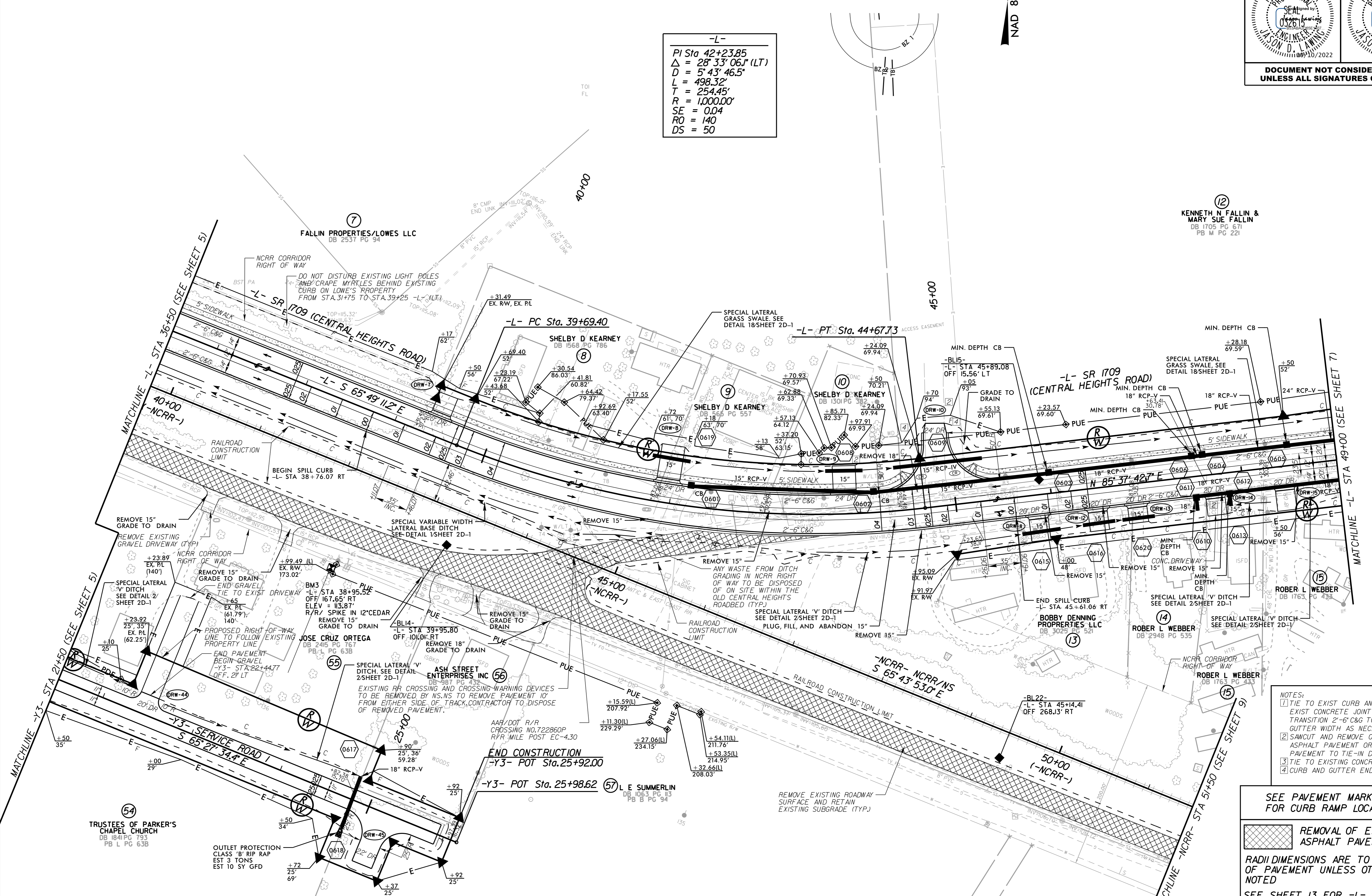
PROJECT REFERENCE NO. U-5724		SHEET NO. 6	
RW SHEET NO.			
ROADWAY DESIGN ENGINEER		HYDRAULICS ENGINEER	
DOCUMENT NOT CONSIDERED FINAL UNLESS ALL SIGNATURES COMPLETED			

-L-

PI Sta 42+23.85
 $\Delta = 28^{\circ} 33' 06.1" (LT)$
 $D = 5^{\circ} 43' 46.5"$
 $L = 498.32'$
 $T = 254.45'$
 $R = 1,000.00'$
 $SE = 0.04$
 $RO = 140$
 $DS = 50$

NAD 83/NA 2011

(2) KENNETH N FALLIN & MARY SUE FALLIN
 DB 1705 PG 671
 PB M PG 221



- NOTES:
- TIE TO EXIST CURB AND GUTTER AT EXIST CONCRETE JOINT
 - TRANSITION 2'-6\"/>

SEE PAVEMENT MARKING PLANS FOR CURB RAMP LOCATIONS

REMOVAL OF EXISTING ASPHALT PAVEMENT

RADI DIMENSIONS ARE TO THE EDGE OF PAVEMENT UNLESS OTHERWISE NOTED

SEE SHEET 13 FOR -L- PROFILE
 SEE SHEET 16 FOR -Y3- PROFILE
 SEE SHEET 20 FOR -NCCR- PROFILE