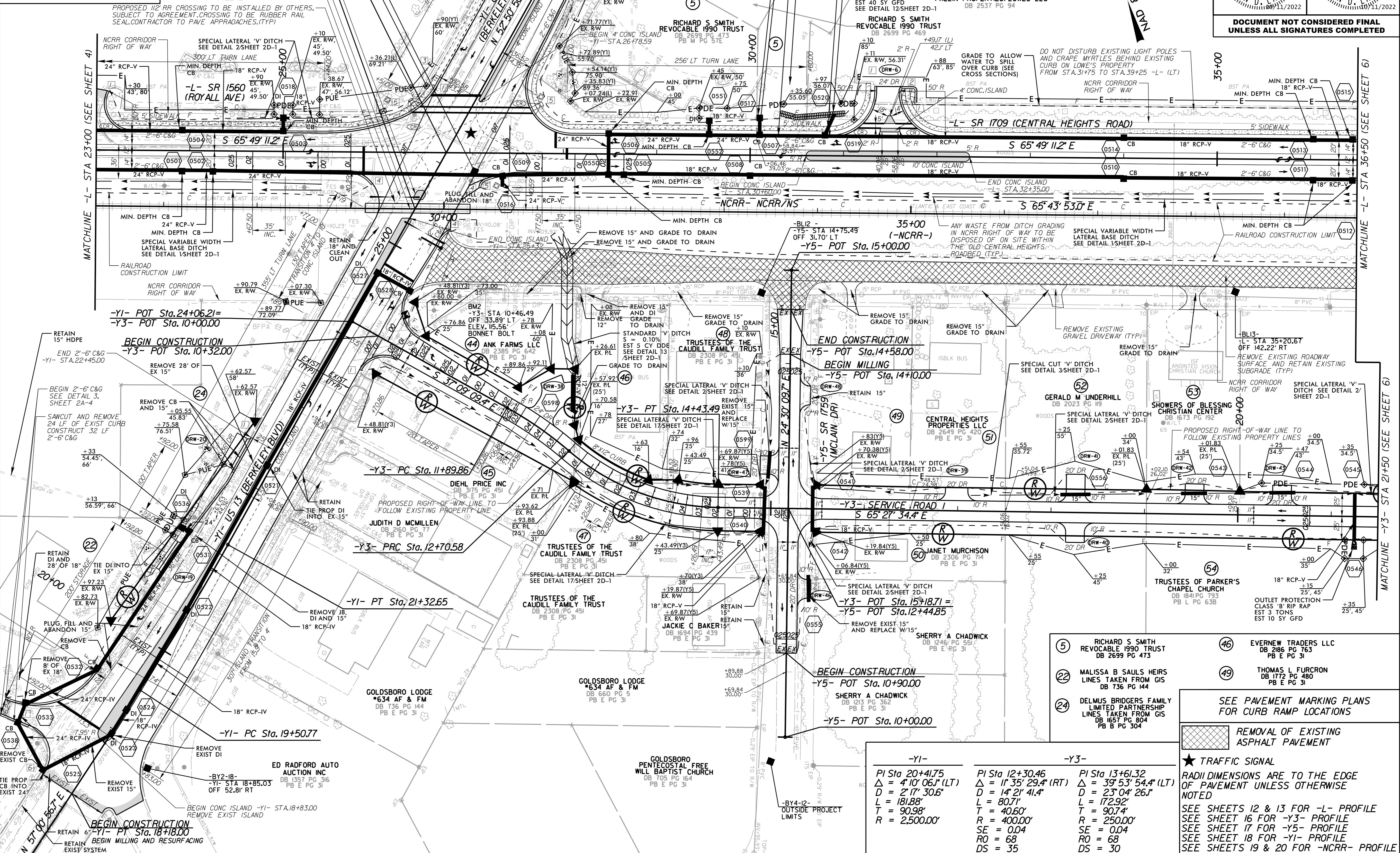


PROJECT REFERENCE NO. U-5724		SHEET NO. 5	
RW SHEET NO.		HYDRAULICS ENGINEER	
ROADWAY DESIGN ENGINEER		SEAL	
<b>DOCUMENT NOT CONSIDERED FINAL UNLESS ALL SIGNATURES COMPLETED</b>			

- NOTES:
- TIE TO EXIST CURB AND GUTTER AT EXIST CONCRETE JOINT. TRANSITION 2'-6" C&G TO MATCH EXIST GUTTER WIDTH AS NECESSARY.
  - SAWCUT AND REMOVE OR MILL EXISTING ASPHALT PAVEMENT OR CONCRETE PAVEMENT TO TIE-IN DRIVEWAY.
  - TIE TO EXISTING CONCRETE SIDEWALK CURB AND GUTTER END TREATMENT.
  - PROP SIGNAL POLE (SEE SIGNAL PLANS).
  - REMOVE 8" OF EX 18" PLUG, FILL, AND ABANDON REMAINDER OF PIPE.



10/11/2022 K:\RAL\_Roadway\01036333 - U-5724 (Central Heights Roadway)\U-5724\_rdy\_pst\_05.dgn

- 5 RICHARD S SMITH REVOCABLE 1990 TRUST DB 2699 PG 473
  - 22 MALISSA B SAULS HEIRS LINES TAKEN FROM GIS DB 736 PG 144
  - 24 DELMUS BRIDGERS FAMILY LIMITED PARTNERSHIP LINES TAKEN FROM GIS DB 1657 PG 804 PB B PG 304
  - 46 EVERNEW TRADERS LLC DB 2186 PG 763 PB E PG 31
  - 49 THOMAS L FURCRON DB 1772 PG 480 PB E PG 31
- SEE PAVEMENT MARKING PLANS FOR CURB RAMP LOCATIONS**
- REMOVAL OF EXISTING ASPHALT PAVEMENT
- TRAFFIC SIGNAL

-Y1-	-Y3-
PI Sta 20+41.75	PI Sta 12+30.46
Δ = 4'10" 06.1' (LT)	Δ = 11'35" 29.4' (RT)
D = 2'17" 30.6"	D = 14'21" 41.4"
L = 181.88'	L = 80.71'
T = 90.98'	T = 90.74'
R = 2500.00'	R = 250.00'
SE = 0.04	SE = 0.04
RO = 68	RO = 68
DS = 35	DS = 30

RADI DIMENSIONS ARE TO THE EDGE OF PAVEMENT UNLESS OTHERWISE NOTED

SEE SHEETS 12 & 13 FOR -L- PROFILE  
SEE SHEET 16 FOR -Y3- PROFILE  
SEE SHEET 17 FOR -Y5- PROFILE  
SEE SHEET 18 FOR -Y1- PROFILE  
SEE SHEETS 19 & 20 FOR -NCR- PROFILE