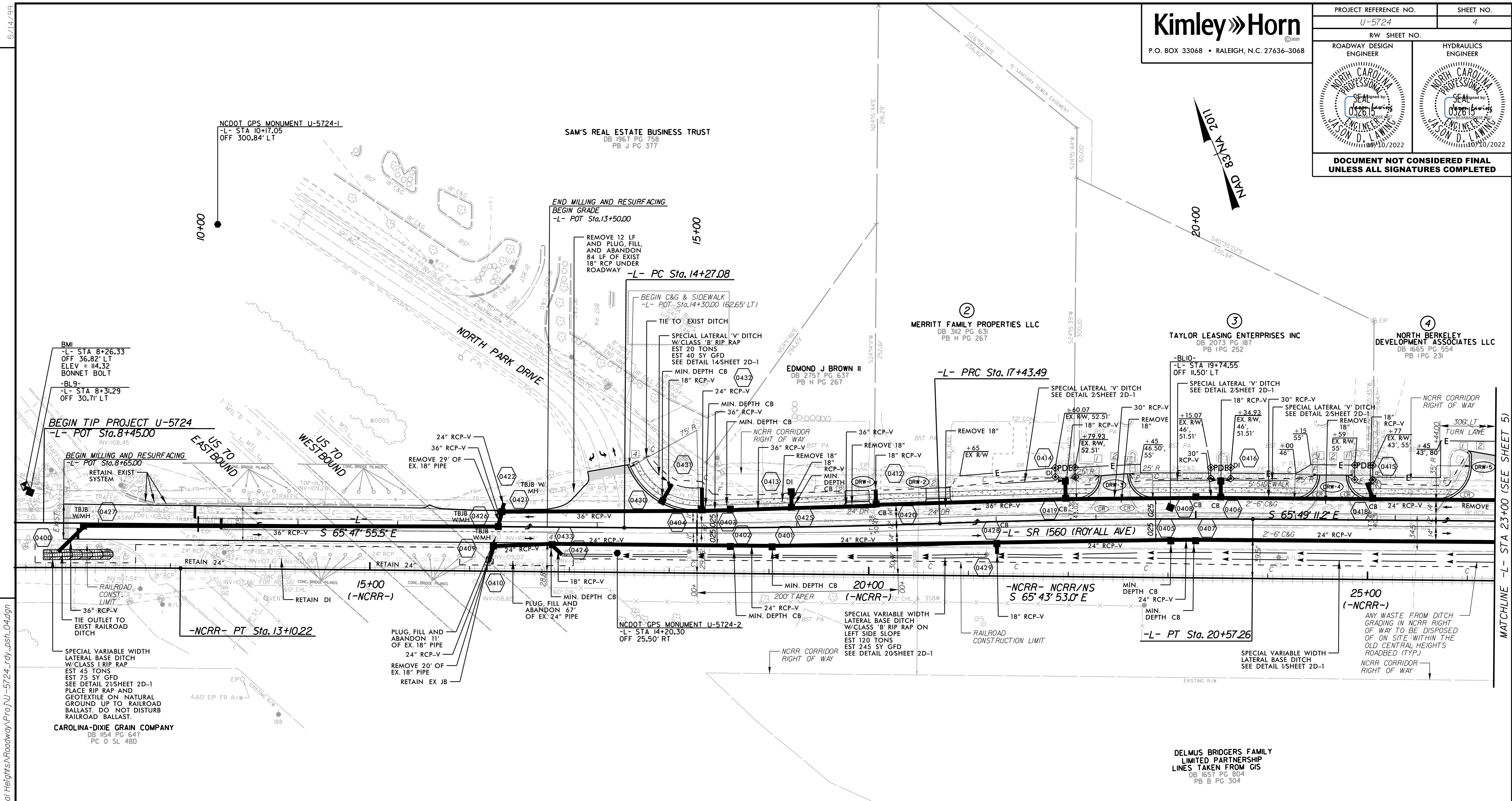


| | | | |
|--|--|---------------------|--|
| PROJECT REFERENCE NO. U-5724 | | SHEET NO. 4 | |
| ROADWAY DESIGN ENGINEER | | HYDRAULICS ENGINEER | |
| | | | |
| DOCUMENT NOT CONSIDERED FINAL UNLESS ALL SIGNATURES COMPLETED | | | |

REVISIONS



DATUM DESCRIPTION

THE LOCALIZED COORDINATE SYSTEM DEVELOPED FOR THIS PROJECT IS BASED ON THE STATE PLANE COORDINATES ESTABLISHED BY NCGS FOR "U-5724-2"

WITH NAD 83/NA 2011 STATE PLANE GRID COORDINATES OF NORTHING: 595362.848(±) EASTING: 2316632.989(±) ELEVATION: 111.932(±)

THE AVERAGE COMBINED GRID FACTOR USED ON THIS PROJECT (GROUND TO GRID) IS: 0.999875296

THE N.C. LAMBERT GRID BEARING AND LOCALIZED HORIZONTAL GROUND DISTANCE FROM "U-5724-2" TO -L- STATION 15+00.00 IS
S 83°46'46.8"E 83.79'

ALL LINEAR DIMENSIONS ARE LOCALIZED HORIZONTAL DISTANCES
VERTICAL DATUM USED IS NAVD 88

- NOTES:
- TIE TO EXIST CURB AND GUTTER AT EXIST CONCRETE JOINT
TRANSITION 2'-6" C&G TO MATCH EXIST GUTTER WIDTH AS NECESSARY
 - SAWCUT AND REMOVE OR MILL EXISTING ASPHALT PAVEMENT OR CONCRETE PAVEMENT TO TIE-IN DRIVEWAY
 - TIE TO EXISTING CONCRETE SIDEWALK
 - CURB AND GUTTER END TREATMENT

SEE PAVEMENT MARKING PLANS FOR CURB RAMP LOCATIONS

| -NCRR- | | -L- | |
|-----------------------------------|-----------------------------------|-----------------------------------|--|
| PI Sta 11+55.11 | PI Sta 15+85.31 | PI Sta 19+00.40 | |
| $\Delta = 1^{\circ}04'23.2"$ (RT) | $\Delta = 2^{\circ}30'39.5"$ (LT) | $\Delta = 2^{\circ}29'23.8"$ (RT) | |
| D = 0'20'45.3" | D = 0'47'36.9" | D = 0'47'36.9" | |
| L = 310.22' | L = 316.41' | L = 313.77' | |
| T = 155.11' | T = 158.23' | T = 156.91' | |
| R = 16,563.17' | R = 7,220.00' | R = 7,220.00' | |
| | SE = NC | SE = NC | |
| | DS = 50 | DS = 50 | |

REMOVAL OF EXISTING ASPHALT PAVEMENT

RADI DIMENSIONS ARE TO THE EDGE OF PAVEMENT UNLESS OTHERWISE NOTED

SEE SHEET 12 FOR -L- PROFILE
SEE SHEET 19 FOR -NCRR- PROFILE

10/10/2022 K:\RAL_Roadway\010363333 - U-5724 (Central Heights)\Roadway\Proj\U-5724_rdy_psh_04.dgn

MATCHLINE -L- STA 23+00 (SEE SHEET 5)