

PROJECT REFERENCE NO. **B-5318** SHEET NO. **UC-5C**

DESIGNED BY: \_\_\_\_\_

DRAWN BY: \_\_\_\_\_

CHECKED BY: \_\_\_\_\_

APPROVED BY: \_\_\_\_\_

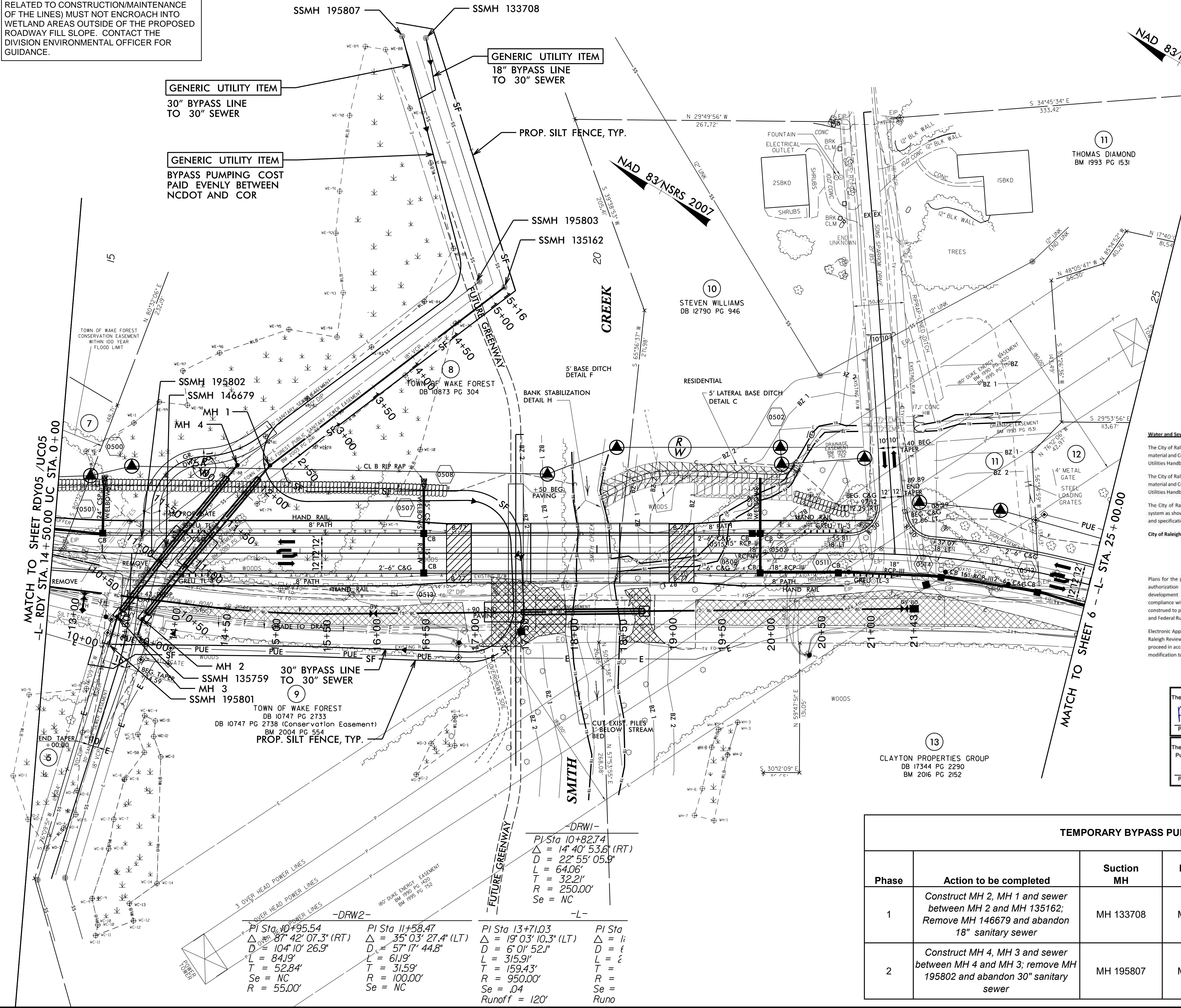
REVISED: \_\_\_\_\_

NORTH CAROLINA DEPARTMENT OF TRANSPORTATION

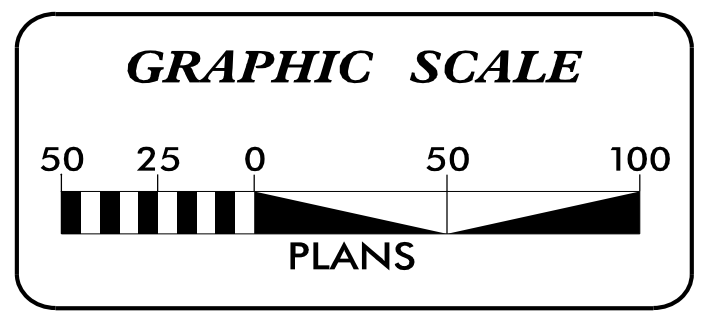
UTILITIES ENGINEERING SEC. PHONE: (919) 707-6690 FAX: (919) 250-4151

UTILITY CONSTRUCTION PLANS ONLY

THE BYPASS LINES (AND ANY ACTIVITIES RELATED TO CONSTRUCTION/MAINTENANCE OF THE LINES) MUST NOT ENCRUCH INTO WETLAND AREAS OUTSIDE OF THE PROPOSED ROADWAY FILL SLOPE. CONTACT THE DIVISION ENVIRONMENTAL OFFICER FOR GUIDANCE.



### UTILITY CONSTRUCTION



NOTE: ALL BYPASS PUMPING WORK TO BE CONFINED TO RIGHT-OF-WAY, EXISTING SANITARY SEWER EASEMENTS AND/OR PUE.

NO UTILITY CONSTRUCTION WORK BEYOND MATCHLINE

#### SITE PERMITTING APPROVAL

Water and Sewer Permits (if applicable)

The City of Raleigh consents to the connection and extension of the City's Public Sewer System as shown on this plan. The material and Construction methods used for this project shall conform to the standards and specifications of the City's Public Utilities Handbook. City of Raleigh Public Utilities Department Permit # **S-4929**

The City of Raleigh consents to the connection and extension of the City's Public Water System as shown on this plan. The material and Construction methods used for this project shall conform to the standards and specifications of the City's Public Utilities Handbook. City of Raleigh Public Utilities Department Permit # **W-3587**

The City of Raleigh consents to the connection to its public sewer system and extension of the private sewer collection system as shown on this plan. The material and construction methods used for this project shall conform to the standards and specifications of the City's Public Utilities Handbook.

City of Raleigh Public Utilities Department Permit # **N/A**

#### CITY OF RALEIGH - PLANS AUTHORIZED FOR CONSTRUCTION

Plans for the proposed use have been reviewed for general compliance with applicable codes. This limited review, and authorization for construction is not to be considered to represent total compliance with all legal requirements for development and construction. The property owner, design consultants, and contractors are each responsible for compliance with all applicable City, State and Federal laws. This specific authorization below is not a permit, nor shall it be construed to permit any violation of City, State or Federal Law. All construction must be in accordance with all Local, State, and Federal Rules and Regulations.

Electronic Approval: This approval is being issued electronically. This approval is valid only upon the signature of a City of Raleigh Review Officer below. The City will retain a copy of the approved plans. Any work authorized by this approval must proceed in accordance with the plans kept on file with the City. This electronic approval may not be edited once issued. Any modification to this approval once issued will invalidate this approval.

These plans have been electronically approved for construction by the Town of Wake Forest Planning Department. This approval may not be edited once issued.

*Patrick Reidy*  
Patrick Reidy  
08/20/21  
Planning

These plans have been electronically approved for construction by the Town of Wake Forest Public Works and Engineering Department. This approval may not be edited once issued.

*Michael H.*  
Michael H.  
08/20/21  
Public Works/Engineering

REVISIONS

GENERIC UTILITY ITEM  
30" BYPASS LINE TO 30" SEWER

GENERIC UTILITY ITEM  
BYPASS PUMPING COST PAID EVENLY BETWEEN NCDOT AND COR

GENERIC UTILITY ITEM  
18" BYPASS LINE TO 30" SEWER

30" BYPASS LINE TO 30" SEWER

TOWN OF WAKE FOREST  
DB 10747 PG 2733 (Conservation Easement)  
BM 2004 PG 554

PROP. SILT FENCE, TYP.

-DRW1-

PI Sta 10+82.74  
Δ = 14° 40' 53.6" (RT)  
D = 22° 55' 05.9"  
L = 64.06'  
T = 32.21'  
R = 250.00'  
Se = NC

-DRW2-

PI Sta 10+95.54 Δ = 8° 42' 07.3" (RT) D = 104° 10' 26.9" L = 84.19' T = 52.84' Se = NC R = 55.00'	PI Sta 11+58.47 Δ = 35° 03' 27.4" (LT) D = 57° 17' 44.8" L = 61.19' T = 31.59' R = 100.00' Se = NC	PI Sta 13+71.03 Δ = 19° 03' 10.3" (LT) D = 6° 01' 52.1" L = 315.91' T = 159.43' R = 950.00' Se = .04 Runoff = 120'	PI Sta 14+... Δ = i D = t L = c T = c R = c Se =
---	--	---	--

#### TEMPORARY BYPASS PUMPING PLAN

Phase	Action to be completed	Suction MH	Discharge MH	MAX. LIFT (FT)	DISTANCE (FT)	AVG FLOW (GPM)	PEAK FLOW (GPM)
1	Construct MH 2, MH 1 and sewer between MH 2 and MH 135162; Remove MH 146679 and abandon 18" sanitary sewer	MH 133708	MH 195801	10	1300	TBD	TBD
2	Construct MH 4, MH 3 and sewer between MH 4 and MH 3; remove MH 195802 and abandon 30" sanitary sewer	MH 195807	MH 195801	10	1300	TBD	TBD