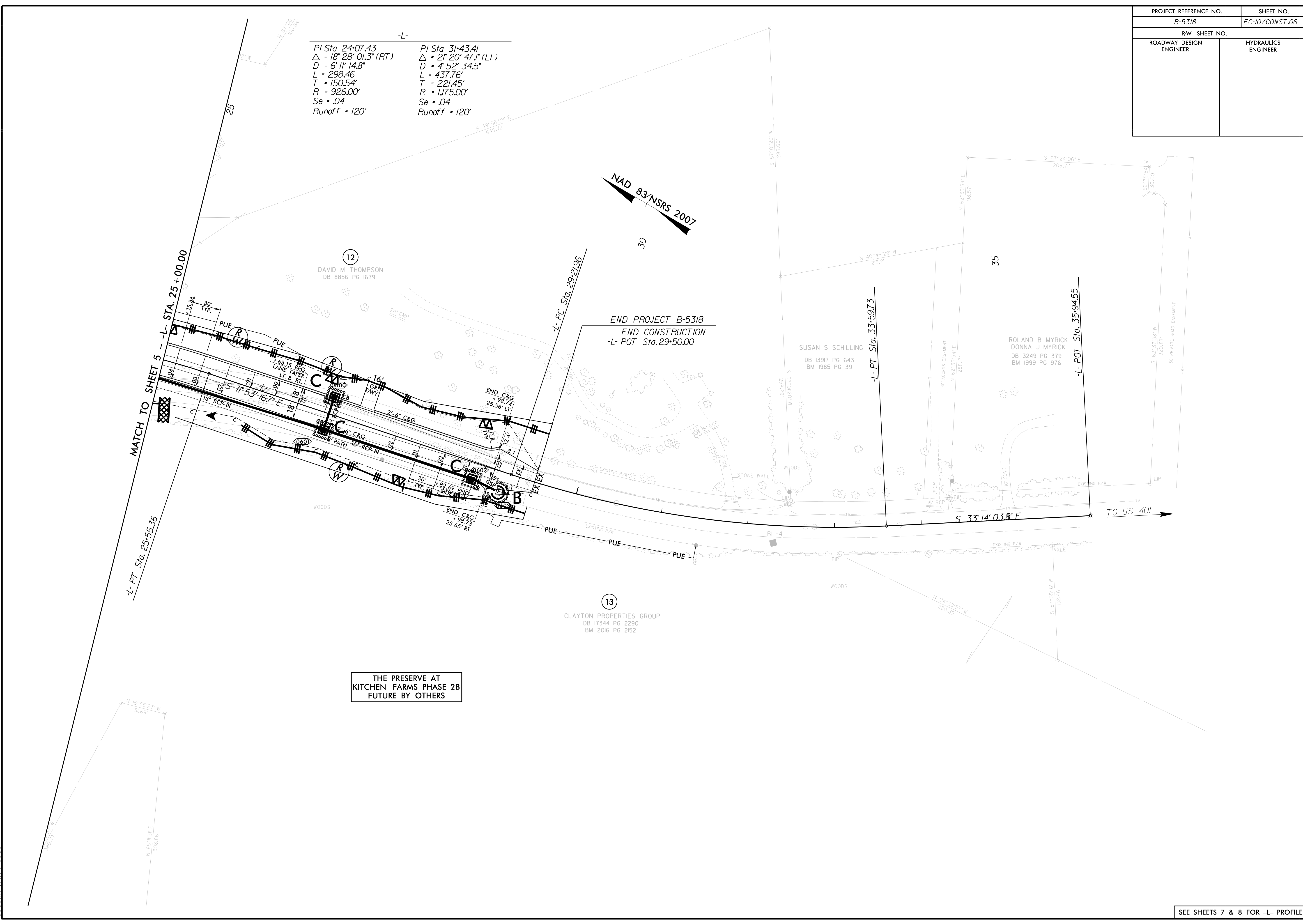


PROJECT REFERENCE NO.	SHEET NO.
B-5318	EC-10/CONST.06
RW SHEET NO.	
ROADWAY DESIGN ENGINEER	HYDRAULICS ENGINEER



-L-

PI Sta 24+07.43	PI Sta 31+43.41
$\Delta = 18^{\circ} 28' 01.3''$ (RT)	$\Delta = 21^{\circ} 20' 47.1''$ (LT)
D = 6' 11" 14.8"	D = 4' 52" 34.5"
L = 298.46	L = 437.76'
T = 150.54'	T = 221.45'
R = 926.00'	R = 1,175.00'
Se = .04	Se = .04
Runoff = 120'	Runoff = 120'

THE PRESERVE AT
KITCHEN FARMS PHASE 2B
FUTURE BY OTHERS