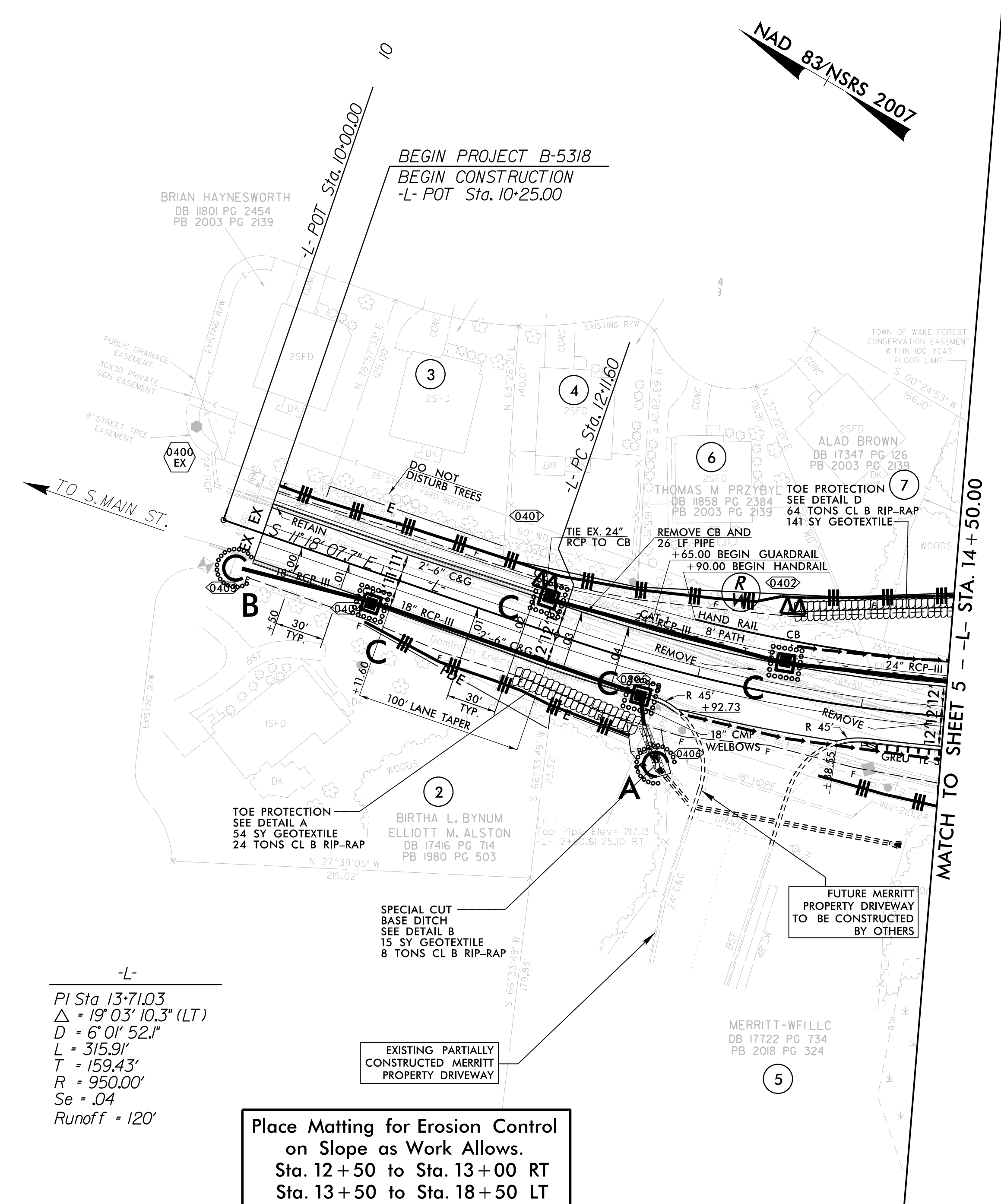
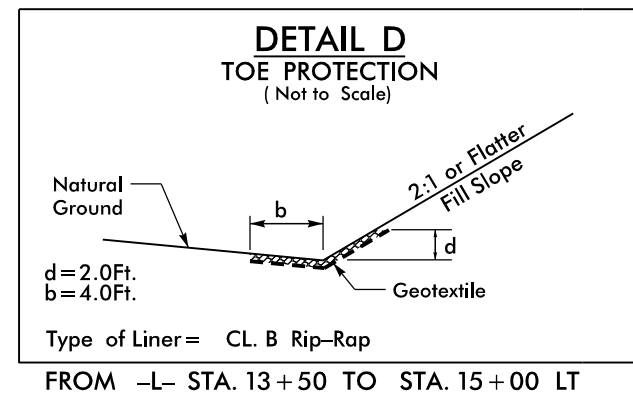
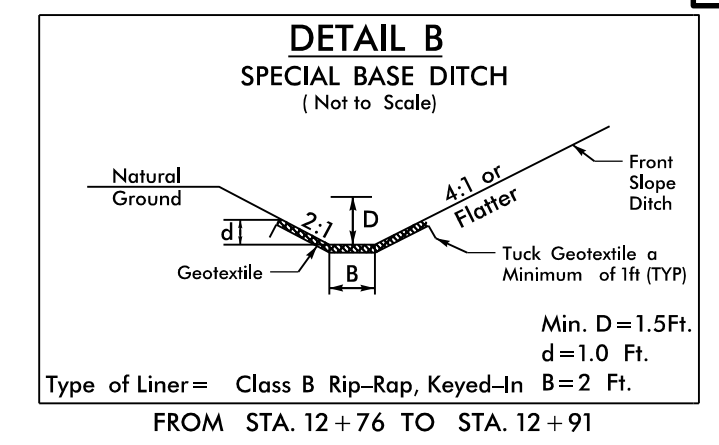
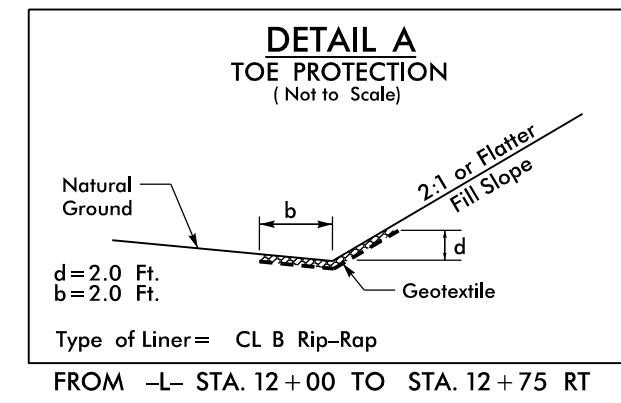


PROJECT REFERENCE NO.	SHEET NO.
B-5318	EC-08/CONST.04
RW SHEET NO.	
ROADWAY DESIGN ENGINEER	HYDRAULICS ENGINEER



-L-
 PI Sta 13+71.03
 $\Delta = 19^{\circ} 03' 10.3" (LT)$
 $D = 6^{\circ} 01' 52.1"$
 $L = 315.91'$
 $T = 159.43'$
 $R = 950.00'$
 $Se = .04$
 $Runoff = 120'$

Place Matting for Erosion Control on Slope as Work Allows.
 Sta. 12+50 to Sta. 13+00 RT
 Sta. 13+50 to Sta. 18+50 LT



SEE SHEETS 7 & 8 FOR -L- PROFILE

8/17/99

19-SEP-2022 12:55
 c:\projects\50084255\50084274_B5318_PH2\CAD\Civil\B5318_Hydro\ulcs\Erosion_Contr\ol\B5318_hyd.ec.PSH.08.dgn
 \$\$\$USE RNAME\$\$\$